

STATE AND LOCAL

Move 'em out

Move over cowpokes and don't punch that doggie



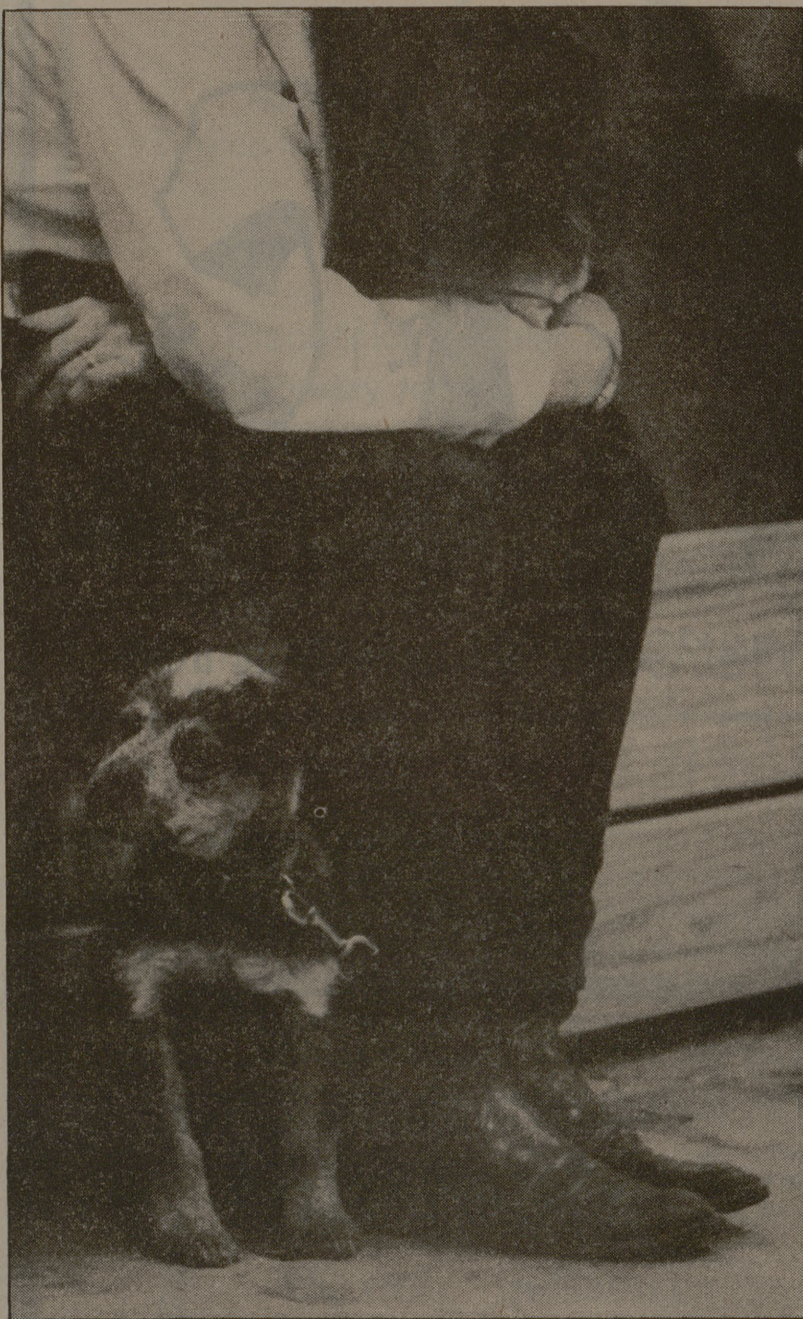
Bud awaits a command to herd the sheep.



The sheep refuse to co-operate, so ...



Bud decides to give them the runaround.



Boomer keeps a watchful eye on the roaming sheep.

Someone, or something, was punching cattle last weekend and the cattle didn't mind. Actually, cattle, sheep and ducks were all being punched. These "punches" were not your conventional biff-bam-boom punches. No, these punches were reminiscent of the old cattle punching days in American history.

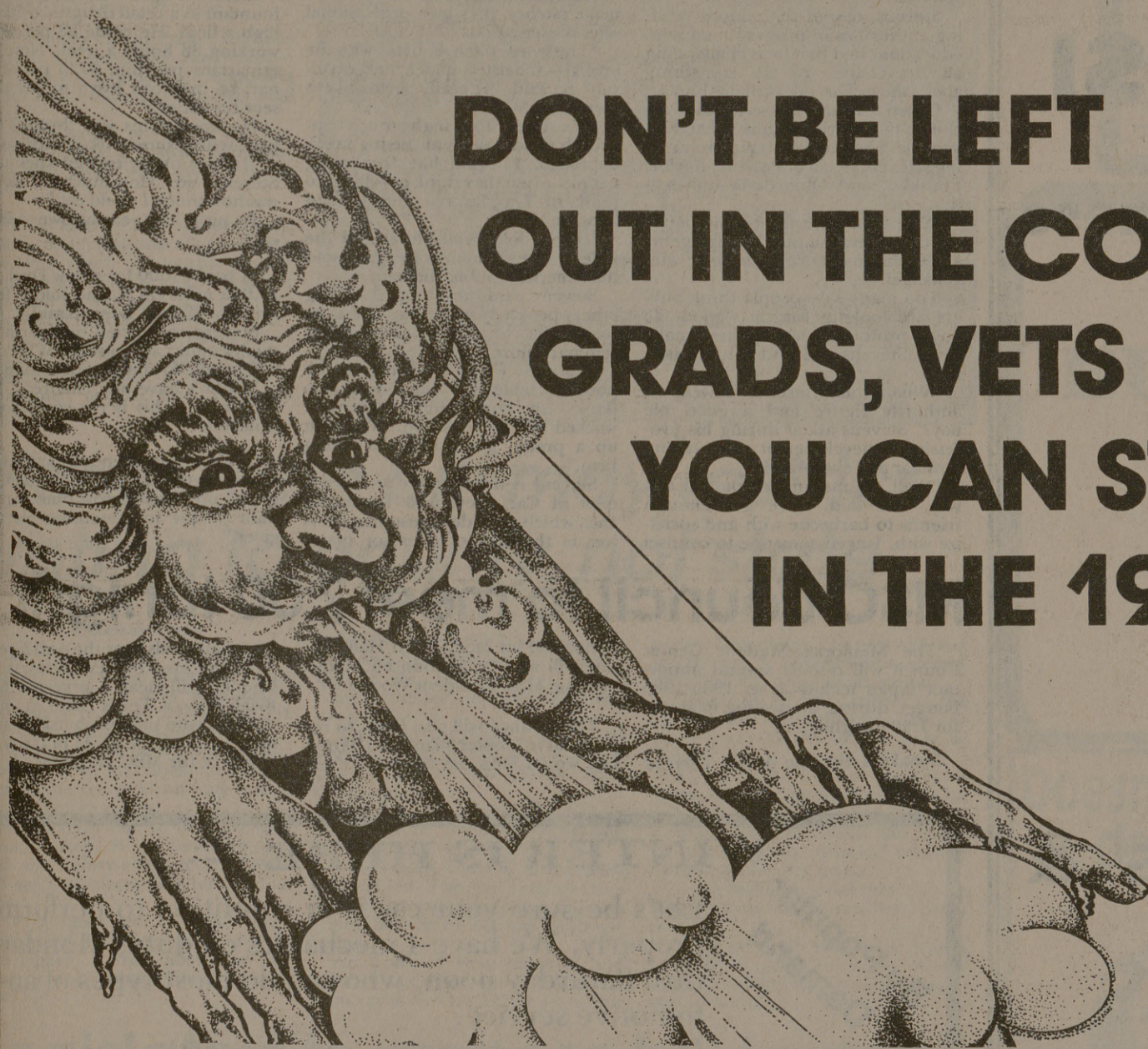
The Texas A&M Range Club's Stockdog Trials pitted Australian Shepards (aussies), Australian Cattle Dogs (blue and red heelers) and Border Collies in competition. The trials consisted of three categories — advanced, open and starting in each of three events— sheep, cattle and ducks.

Herd dogs are judged on their ability to navigate a bunch of sheep, or whatever, through a prescribed course. The Range Club's course included one gate and a chute through which the dog must herd the animals. Most of the dogs completed the course under the 10 minute limit.

Zepher's Crimson King, fondly referred to as Bud, was entered in the advanced sheep category. When working sheep, the dog must be careful of a sheep's tendency to butt things. Bud found this out fast. The first set of sheep Bud faced contained one onery buck. A decision by the judge removed the buck from the ring, leaving Bud only four sheep to herd. Bud finished the course right as time expired.

Most of the dogs attending the trials were aussies, such as Bud. Other breeds were also roaming around the grounds. Boomer, a blue heeler, was too small to chase down the sheep, but he showed up to see how herding was supposed to be done. Boomer is only ten-weeks old but he already herds ducks. Eventually, Boomer will herd sheep.

Photos and story by MARCY BASILE



DON'T BE LEFT OUT IN THE COLD GRADS, VETS & MEDS: YOU CAN STILL BE IN THE 1985 AGGIELAND.

PHOTO SESSION EXTENSION THRU FRIDAY, FEB. 1st

**LOCATION: YBA STUDIO
1700 S. KYLE
BEHIND CULPEPPER PLAZA
TIME: 8:30 to 12 and 1 to 4:30 p.m.**