

Gallery Datsun

is pleased to extend **the 10% Student Discount** w/current Aggie I.D.
1214 Texas Ave. 775-1500



Alfredo's / Papa's Pizza
Introduces
39¢ Flameburgers
49¢ French Fries
65¢ Onion Rings

Hours: Open 11 am Open late
846-0079 846-3824
509 University Drive

SIGMA PHI EPSILON

Spring Rush 1985

Thurs. Jan. 17	Let's Just Party Party 9:00 p.m.
Sun. Jan. 20	Super Bowl Party
Tues. Jan. 22	Zephyr Happy Hour 4-7
Wed. Jan. 23	"Texas" Tea Party 9:00 p.m.
Sun. Jan. 27	Fajitas & Beer

1.6 Miles West of the Vet School
696-7958

STATE AND LOCAL

Warped



Crusader fights Texas acid rain

State says level safe

Associated Press
DALLAS — A Dallas physicist who measures rainfall in beakers placed on top of his van insists threatening levels of acid rain are falling in Texas.
And although George W. Crawford's claims the polluted rain is acidic enough to affect wildlife are in conflict with findings of the Texas Air Control Board, he has been enlisted to help with the state studies.
The board says its tests have consistently found the region's precipitation to be normal.
By joining forces, Crawford and

the board hope to reach a shared conclusion about whether Texas is threatened by acid rain.
"People have to understand that acid rain is our problem here in Texas as well as a problem in the eastern part of the U.S.," Crawford told the Dallas Times Herald in a story published Monday. "The average acidity of the rain is very close to that of the (Northeast), and we are at the beginning of the decade of damage."
Rain becomes acidic when it falls through layers of pollution, picking up traces of sulfur dioxide and ni-

trogen oxides. Some scientists blame acid rain for decreases in fish populations.
Crawford has been analyzing Dallas-area rainfall since summer, and said his 33 samples show average acidity levels of pH 4.5 in September, 4.2 in October and November, and 3.85 in December.
The state agency recorded average acidity levels of 5.7 in 1981, 5.5 in 1982, and 5.3 and 5.6 in 1983.
Average rainfall measures an acidic level of 5.7 on the pH scale. The scale ranges from 0, the most acidic, to 14, the most alkaline.

Bullock helps cut state spending

Associated Press
AUSTIN — State Comptroller Bob Bullock announced Monday he will close eight offices and trim his workforce by 104 people to help reduce state government spending.
Bullock said the closings and layoffs are concentrated on agency functions that aren't directly tied to tax collecting.
"We're eliminating services such as bookkeeping assistance to local governments; research for other state agencies, cities and chambers of commerce; and taxpayer publications," Bullock said.
Estimates indicate state govern-

ment revenues over the next two budget years will fall about \$1 billion short of current spending. Gov. Mark White has asked all state agency directors to cut costs wherever possible to help head off a tax increase.
Bullock said offices in Brownwood, Greenville, Texarkana, Alpine, Midland, Kerrville and Del Rio would be closed. The audit office in Atlanta, Ga., will be closed and its staff merged with other out-of-state audit offices, he said.
Bullock also said clerical positions throughout his agency would be automated whenever possible.

"We are combining as many jobs as possible so that the employees who remain will be able to work more efficiently," he said.
Bullock, who announced an unspecified number of layoffs in his 2,700-member department last week, Monday said he would assist those who are leaving to find other jobs.
"We're giving these people the most we can in the way of termination benefits," he said.
"We will notify employers of the talent we're letting go. We'll help these people with courses in job hunting."

Appeal by Baylor rejected

Associated Press
WASHINGTON — The Supreme Court Monday rejected Baylor University Medical Center appeal that said accepting federal Medicare and Medicaid reimbursement does not subject it to a law protecting the handicapped.
The court left intact a ruling that hospitals risk losing federal aid if medical care when they do not cooperate with investigations of alleged bias against the handicapped.

The court made no comment.
In 1980 the university hospital, cited in Dallas, allegedly prevented a deaf woman undergoing surgery from having a sign language interpreter of her choice present to the patient communicate with doctors.
The woman, who was not identified in court documents, complained the hospital violated the 1973 Federal Rehabilitation Act, which bans discrimination against handicapped in programs receiving federal aid.

The Department of Health and Human Services asked the hospital for information to help it investigate the complaint, but the hospital refused on grounds that it received federal financial assistance.

The 5th U.S. Circuit Court of Appeals, upholding a federal judge's ruling, said last July Medicare and Medicaid reimbursement is a form of federal aid that triggers the Rehabilitation Act.
"Baylor's in-patient and emergency room services are the programs receiving this federal assistance and may thus be proper subjects for HHS investigation," the appeals court said.

It ordered a cutoff in reimbursement if the hospital did not provide the information.
Medicare is a federal program for the elderly and Medicaid is a state and federal program for the need-

January 22-23

SPRING REGISTRATION

MSC BOX OFFICE:

For NON-CREDIT COURSES

9:00 A.M. - 6:00 P.M.



WELCOME BACK AGGIES!

STUDENT SPECIAL

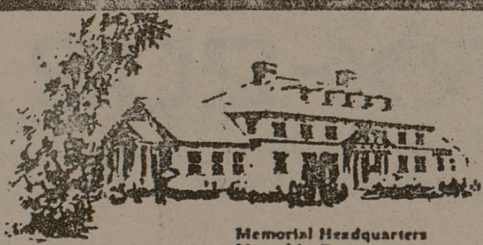
**NO DEPOSIT
NO RENT**

until Feb. 1
(student I.D. required)

1 & 2 Bedroom Units
starting @ \$220



Call today! 693-1325
502 S.W. Parkway College Station



Pi Kappa Alpha National Fraternity

- ... was founded in 1868 at the University of Virginia
- ... has over 125,000 members
- ... has over 180 collegiate chapters in forty states
- ... provides scholarships and loans through its Memorial Foundation
- ... publishes a quarterly magazine, the *Shield & Diamond*, with a circulation in excess of 90,000
- ... maintains a professional staff working in chapter services, finances, housing, alumni, rush and expansion
- ... has a Chapter House Fund with a net worth in excess of \$2 million to assist chapters in remodeling and building of new edifices
- ... has a Resident Counselor Program where qualified student members are salaried to help chapters needing special assistance



PI KAPPA ALPHA

1985 SPRING RUSH DATES

- | | |
|-----------------|--|
| Jan. 22 Tues.: | Informative Smoker (Men Only) |
| Jan. 24 Thurs.: | Aggieland Inn 7:00 p.m. Coat & Tie "Green Fog Party" |

All Parties Start at 9:00 P.M. at the Pike House

PI KAPPA ALPHA

Traditionally The Sharpest Men on Campus

Ron or Jimmy 693-8598
Joe or Keith 693-2733

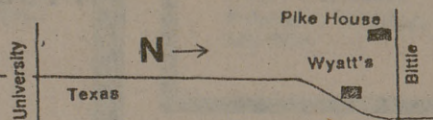
LEADERSHIP. ... Striving to expose our members to the rewards and responsibilities of campus, community and chapter involvement, IKA has members in every level of campus and community life across the nation.

SCHOLARSHIP. ... Through programs developed to maximize academic performance, and by offering alumni-sponsored grants and low-interest scholarship loans to assist in financing educational expenses, Pi Kappa Alpha works to promote the academic efforts of our members.

SERVICE. ... The measure of man is what he gives of himself. IKA's give considerable time and energy through organizations such as Big Brothers of America, Muscular Dystrophy Association, the Heart Fund and many other philanthropic and service associations.

ATHLETICS. ... The experience and rewards of athletic competition are an important part of the growth and development of a young man. The college fraternity provides an ideal setting to maximize these benefits through keen athletic competition, and IKA's success in this area has long been one of our trademarks.

ALUMNI. ... Alumni are the strength and backbone of Pi Kappa Alpha. Over 120,000 initiated brothers give true meaning to tradition. Their volunteer service, from local chapter advisors to national officers, insures that IKA will continue to grow in the future and be a significant part of the lives of thousands of college men and alumni.



You get more for your money when you dine on campus.

Underground Deli and Store

Breakfast and Lunch
Full Salad Bar and Daily Special

TOWER

open
Mon. Thru Fri.
11:00 a.m. to 1:30 p.m.

MSC Cafeteria

Open Each Day Mon thru Sat
6:30 AM to 7:00 PM
Sunday
7:00 AM to 7:00 PM
"Quality First"