

MSC OPAS TWELVE

From Ax to Zukerman — all MSC OPAS Twelve!

From Pianist Emanuel Ax to Violinist/Conductor Pinchas Zukerman, the best opera, the best music, the best ballet, the best MSC OPAS ever! MSC OPAS Twelve!

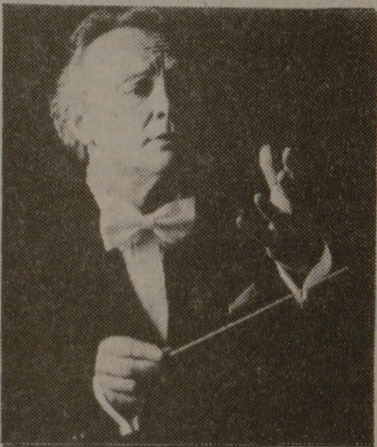


Photo Top: Klaus Tennstedt
Photo Bottom: "A Week of Dreams" /
The Black Light Theatre of Prague

The Black Light Theatre of Prague

Originating in one of the world's most beautiful and artistic cities, the Black Light Theatre of Prague has toured the world since 1961. All audiences love its startling originality and superb technique. The Black Light Theatre takes us into the magical unknown. Mime, poetry, music, color and movement blend with great sensitivity to portray the full range of human feelings and fantasy, from simple to bizarre. The Black Light Theatre appeals to the discerning as well as the most naive spectator in every audience.

"A fantastically imaginative spectacle."
LE MONDE, PARIS

The London Philharmonic Orchestra Klaus Tennstedt Conducting

The London Philharmonic is one of the dominant forces in international music. In a half-century of great performances, the orchestra has toured the world and played with the world's great conductors. Music director/conductor Klaus Tennstedt has led great symphonies for over a quarter century. He has conducted every major American symphony as well as the Berlin Philharmonic, Vienna Philharmonic, L'Orchestre de Paris, Israel Philharmonic and Rotterdam Philharmonic. In every performance the London Philharmonic recreates the magic that moved a critic to say of its very first performance: "The tone was magnificent, the precision perfect, the reading a miracle of fire and beauty."

Western Opera Theater "La Cenerentola" (Cinderella)

The young American singers of the Western Opera Theater bring their enthusiastic talent to the classic Cinderella story. As the touring and educational affiliate of the San Francisco Opera, the Western Opera Theater trains the opera stars of tomorrow. Bright comedy and glorious singing combine in this sparkling explosion of joy. Composer Rossini shows his comic inventiveness in a dazzling musical score that includes ensembles acclaimed as "high-water marks of comedy in music."

"...veteran opera goes will find new and intriguing characterizations...
but this is ideal as an introduction to opera for those who have never seen one before."
OREGON JOURNAL

St. Paul Chamber Orchestra Pinchas Zukerman Playing and Conducting

The only full-time professional chamber orchestra in the United States, the St. Paul Chamber Orchestra is world-renowned for its versatility and technical excellence. The Orchestra's host of awards include a Grammy for best chamber music recording. Pinchas Zukerman is internationally revered as a violin soloist. "As a violinist and violist, Zukerman has no clear superiors," The New York Times said. Zukerman, who has won three Grammys himself, brings that intensity to bear when conducting the St. Paul Chamber Orchestra.

"The St. Paul players are outstanding in their own right,
and Zukerman has drawn elegant, refined playing from them."
THE NEW YORK POST

Emanuel Ax, Pianist

Though only in his late twenties, Emanuel Ax is already widely regarded as one of the "old masters" of the piano. Since winning the first Arthur Rubinstein International Piano Competition in 1974, he has built a concert career of unparalleled brilliance. Critics have universally praised his unique feel for the poetry of music. As the San Francisco Examiner reported: "Ax has such a deep understanding of the pieces, he's able to expose every detail without disturbing balance or interrupting melodic or harmonic motion."

"There is a wisdom in his touch.
His sense of shape and grasp of thematic potential are especially surprising in one so young."
THE NEW YORK POST

The King's Singers

The six men who are The King's Singers met while attending the King's College of Cambridge 15 years ago. They've been pleasing audiences ever since. They sing a wide repertoire, a cappella, from classical to modern.

"... enormous popularity in what might have been considered an esoteric field."
BBC

The Houston Ballet "Mixed Repertoire"

The Houston Ballet wins more acclaim and new fans with each season. The company's "Mixed Repertoire" was so well received by MSC OPAS Eleven that they'll present a new program of modern and original selections again for MSC OPAS Twelve. The Houston Ballet brings an energy and power to each performance that few companies can match. A great end to a tremendous season!

"They bring to each ballet a maximum of fervor and control..."
LA SUISSE DIMANCE, GENEVA

Season Ticket Prices

	Zone 1	Zone 2	Zone 3
Regular	\$89.00	\$71.00	\$56.50
Student	\$70.00	\$56.25	\$39.00

Make the best OPAS better. Be an MSC OPAS member!

MSC OPAS Twelve brings the best of performing arts to your life. MSC OPAS needs your support to maintain that level of excellence.

MSC OPAS performances by internationally acclaimed artists don't just happen. Each enchanted evening takes time and work and money. It also takes your support. MSC OPAS season and individual ticket sales cover only 60% of production costs. MSC OPAS depends on contributions to cover the rest.

MSC OPAS is a nonprofit organization of the Memorial Student Center at Texas A&M University. It receives no state appropriated funds. Membership in MSC OPAS is open to all who wish to make voluntary contributions to the program over and above the cost of season tickets.

Be part of something great. Be an MSC OPAS member!

MSC OPAS Membership

There are several levels of MSC OPAS membership, depending on the amount of contribution. Members may contribute a specific amount or may pledge (guarantee) up to a specific amount to help cover season deficits.

All contributions are tax deductible.

Guarantees

To become an MSC OPAS Guarantor or Benefactor, individuals pledge specific dollar amounts to cover season deficits. These pledges are made prior to the season. Based on end-of-season costs, the MSC OPAS Board assesses the portion of pledges needed at the final board meeting of the year. Guarantors and Benefactors are then billed the assessed percentage of their pledge.

- Benefactors guarantee \$500 or more.
- Guarantors guarantee \$100 to \$499.

Contributions

MSC OPAS Memberships through contribution begin at \$30 per season ticket for the first two tickets. The member can then purchase up to four additional season tickets without additional contribution.

Levels of contribution include:

- Corporate Underwriters -- beginning at \$1,000 contributions
- Trustees -- \$500 to \$999 contributions
- Patrons -- \$100 to \$499 contributions
- Sponsors -- \$50 to \$99 contributions
- Friends -- \$30 to \$49 contributions
- Scholarship -- We will donate your tickets to Students or Senior Citizens

The Benefits of MSC OPAS Membership

- **Best Seats.** Members get first chance at the best seats in the house. Members have the option each year to renew the same seats they occupied last year or to change seats, subject to availability.
- **Convenient Parking.** Members receive reserved parking privileges in lots closest to the Rudder Theatre Complex for all performances.
- **OPAS Guild Membership.** Members are eligible for membership in the OPAS Guild.
- **Social Functions.** All MSC OPAS members are invited to social functions hosted by the OPAS Guild, including the MSC OPAS Gala.

The OPAS Guild

All MSC OPAS members are eligible to join the OPAS Guild. The Guild was organized in 1971 to support and enrich MSC OPAS programs. Guild functions include previews, receptions, dinners and other social affairs in association with performances. The Guild also supports the season ticket campaign. Guild membership dues are \$15 per year. The Guild is totally self-supporting.

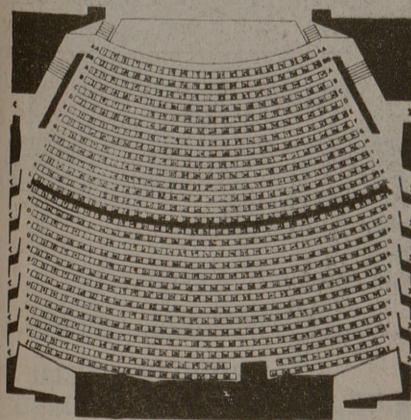
To join the Guild, include Guild dues with your ticket fees when completing your season ticket application order. For more information, contact Mrs. Marge Zwolinski, 696-8684.

7 Great Shows 1 Terrific Price

- The Black Light Theatre of Prague**
September 18, 1984
"A totally gorgeous evening of beauty, colour, magic and music."
THE IRISH TIMES
- The London Philharmonic Orchestra
Klaus Tennstedt Conducting**
October 18, 1984
"... music-making to keep everyone on the seat's edge."
THE LONDON TIMES
- Western Opera Theater
"La Cenerentola" (Cinderella)**
October 29, 1984
"... excellent — professional and pure, secure and sparkling."
SACRAMENTO BEE
- St. Paul Chamber Orchestra
Pinchas Zukerman
Playing and Conducting**
January 24, 1985
"If there was ever a case of love at first sound, this is it."
NEWSWEEK
- Emanuel Ax, Pianist**
February 25, 1985
"... a pianist with spectacular fingers and a distinct poetic gift."
NEW YORK TIMES
- The King's Singers**
March 19, 1985
"... enormous popularity in what might have been considered an esoteric field."
BBC
- The Houston Ballet "Mixed Repertoire"**
April 10, 1985
"... a credit to America... even a credit to Texas!"
NEW YORK POST

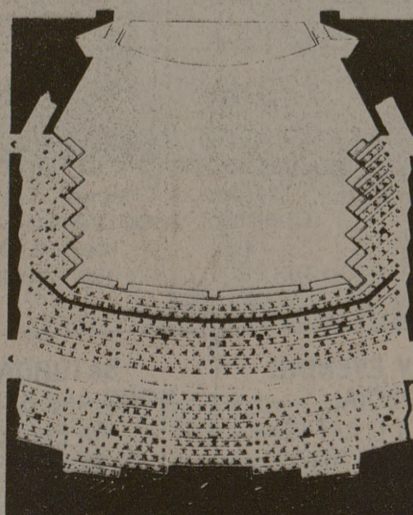
MSC OPAS TICKET ORDER 1984-85

Mail to MSC Box Office • Box J-1 • College Station, TX 77844 • For Information, Call: 845-1234



ORCHESTRA LEVEL

	Orchestra	Balcony
Zone 1	AA-L	A-K
Zone 2	M-Z	L-Q
Zone 3	—	R-ZZ



BALCONY LEVEL

List my (our) name in the following manner:

NAME _____

ADDRESS _____ APT. # _____

CITY/STATE/ZIP _____

PHONE # _____

I choose to retain same seats as last year.
(Benefactors, Guarantors and Contributors Only)

I wish to be assigned best available seats.
____Orchestra ____Balcony ____No Preference

I wish to donate _____ of my season tickets for use by students.

Check Enclosed (payable to TAMU MSC)

SEASON TICKETS

Category	Zone	Price	No. Seats	\$
Regular (Adult)				
Student (All)				

My Guarantee to MSC OPAS is \$ _____

My Annual Membership contribution to MSC OPAS (\$30 or more per season ticket for each of the first two, with the option to purchase four additional seats with member priority) \$ _____

My Guild Dues (\$15) \$ _____

Handling 1.50

GRAND TOTAL _____

Charge to my Interbank MasterCard

Charge to my VISA

Card Holder's Name _____
Programs and performance dates subject to change without notice.
We regret there will be no refunds or exchanges.