

R.I.

Finals Week in Aggieiland ...

History 106
Comprehensive Final

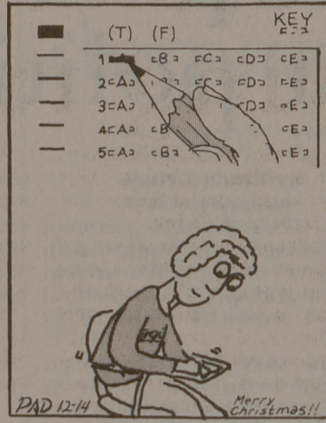
name *Mark Gardenelli*



true/false
1. President Warren Harding was associated with the "Teapot Dome" scandal.



by Paul Dirmeyer



Son's auto death recalled by father

United Press International
SAN ANTONIO — One year after the death of his son, Chris Ramirez Sr. said he knows the hit-and-run driver police never found still sees the decorated, wooden cross erected at the accident scene.

Chris Ramirez Jr., an active 14-year-old with a penchant for art, was killed Dec. 13, 1982, when a customized pickup truck veered into the youth's direction, apparently to frighten him, then went out of control.

Ramirez Sr., a concrete worker, said Tuesday his son's attitude toward life had changed before the accident. He said it was a strange, unsettling change mirrored in the youth's art.

"He knew he was going to die," Ramirez said. "He never said anything, but you could see it in his drawings. He began reading the Bible, studying the Bible."

The young artist won numerous awards for his drawings, which changed from hot rods, fanciful monsters and girls to

beckoning angels, tearful religious figures and tombstones bearing the artist's name.

And the grisly self-prophecy came true.

Ramirez said he erected a decorated, wooden cross near the spot on Southwest Military Drive where his son was killed.

"They never caught the driver of the truck," he said. "I put that cross up because I know he lives in that neighborhood. He

took it down, twice. But I put it back up.

"I know he sees it. I know he lives in that area," Ramirez said.

AUTO INSURANCE FOR AGGIES
Call: George Webb
Farmers Insurance Group
3400 S. College 823 8051

Plane crash partly caused by air traffic controllers

United Press International
EL PASO — Albuquerque, N.M., air traffic controllers may be partially responsible for a plane crash in El Paso last month that killed four people, a National Transportation Safety Board official said Tuesday.

NTSB Investigator J. O. Johnson said he listened to the tape of the conversation between Pilot Lyle Foster and Albuquerque Air Traffic Control moments before the crash. He said the tape indicates that both the tower and the pilot thought the plane was higher than it was shortly before it

crashed into the Franklin Mountains.

Foster was killed in the crash, along with plane owner Gordon Coker and Coker's daughters, Cynthia Ann, 14, and Becky, 12, all from the Los Angeles, Calif., area.

Since the air controllers' strike of two years ago, El Paso Air Traffic Control is closed between midnight and 6 a.m., with all control coming from the Albuquerque Regional Air Traffic Control Tower, about 265 miles away. The crash occurred at approximately 12:30 a.m., Nov. 22.

Hunger a reality, commissioner says

United Press International
CHARLESTON — West Virginia Human Services Commissioner Leon Ginsberg, president of the American Public Welfare Association, says he disagrees with statements about hunger made by White House counselor Edwin Meese.

Meese said last week some people go to soup kitchens because "that's easier than paying for it."

"I think they go because they don't have enough to eat and they're hungry," Ginsberg said.

The study said that increasingly, applicants for food assistance are people previously considered middle class whose status has been changed by unemployment.

"He said he hadn't seen any hard information that the problem is growing. But I think we have hard information that hunger is a growing problem in this country."

An American Public Welfare Association study on hunger said the problem is expanding to a new group of Americans who have not traditionally been welfare recipients, he said.

The study said that increasingly, applicants for food assistance are people previously considered middle class whose status has been changed by unemployment.

The "new poor" don't have enough food, but they're often denied food stamps because they don't meet strict federal standards that require them to sell their few assets in order to qualify, the APWA report said.

"It is this group that is responsible for the increased demand for food stamps, the growing number of emergency

food banks and a significant rise in the number of soup kitchens," the study said.

The APWA recommended a reorganization and expansion of the program to distribute surplus food. It also called on Congress to change the food stamp law "to assure a diet that meets federal nutritional standards" and to temporarily cover the long-term unemployed who have exhausted their benefits.

Ginsberg said the growing hunger problem was not a result of specific cutbacks by the Reagan administration, but the "faltering economy."

Ginsberg said Meese's comments were "typical of a well-taken-care-of person's reaction to the problem of hunger. Most just don't really know much about poverty, hunger and deprivation."

He said more money should be made available to distribute surplus food.

A list of the states surveyed is Alabama, California, Connecticut, Kansas, Louisiana, Michigan, Mississippi, Texas, Utah, Virginia and Washington.

Officials searching for suspect

United Press International
DECATUR — Law officials searched Tuesday for a 25-year-old man accused in the shooting death of Decatur resident John Michael Smith.

Wise County Sheriff's officials said an arrest warrant for murder had been issued for Bobby Grundy of Decatur, whom authorities say shot Smith once in the head with a small-caliber pistol Monday night.

Officials said there were two witnesses who claim to have seen Grundy shoot Smith. The said Grundy remained armed and was considered dangerous.

Kroger LOW PRICES Compare

Kroger Family Center

STROH'S BEER 12 PAK 12 OZ. CANS \$4.39

PABST BLUE RIBBON BEER 12 PAK 12 OZ. CANS \$4.49

CELLA WINES 750 ML. BTL. \$1.89

KROGER 2% LOW FAT MILK GALLON \$1.69

TIDE DETERGENT 49 OZ. BOX \$1.87

KROGER TWIN, FLAKE, COMBO BROWN & SERVE ROLLS 11 OZ. PKGS. \$2.17

BETTY CROCKER CAKE MIX 18 1/2 OZ. BOX \$1.77

KROGER CHEESE FOOD AMERICAN SINGLES 12 OZ. PKG. \$1.39

KROGER DELUXE ICE CREAM HALF GAL. \$1.99

TRAPPY BLACK EYE PEAS OR PINTO BEANS 25 LB. BAG \$3.10

COST CUTTER Dog Food 25 LB. BAG \$3.99

COST CUTTER HEALTH AND BEAUTY AIDS

Carmel
SHAMPOO OR CONDITIONER Carme Elastin 12 OZ. BTL. \$1.19
Carme Elastin Firming Lotion 12 OZ. BTL. \$1.69
Carme Elastin Firming Cream 4 OZ. JAR \$3.99

ALCON OPTI-CLEAN 12 ML. BTL. \$2.29

ALCON BOIL 'N SOAK SOLUTION 12 OZ. BTL. \$2.49

ALCON FLEX-CARE SOLUTION 12 OZ. BTL. \$2.69

SQUEEK SHAMPOO or CONDITIONER 11 OZ. BTL. \$1.99

ALOE JOJOBA
SHAMPOO OR CONDITIONER Aloe Jojoba 12 OZ. BTL. \$1.19
ALOE JOJOBA Body Lotion 12 OZ. BTL. \$1.69
ALOE JOJOBA Skin Creme 4 OZ. JAR \$1.99
ALOE VERA Gel 4 OZ. BTL. \$1.99

ALBEE WITH C OR Z-BEC VITAMINS BTL. OF 100 OR BTL. OF 60 \$3.99

Beauty Lotion 6 OZ. BTL. \$1.99
MAXIMUM STRENGTH ACETAMINOPHEN BTL. OF 30 TABS. OR 24 CAP. \$1.99
Panadol 16 CAP. \$1.99

Nasal Spray 1 OZ. BTL. \$2.49
CORTREX BTL. OF 24 TABS. OR 16 CAPSULES \$2.49
Cold Reliever 16 CAP. \$2.49

University Book Stores

NORTHGATE 409 UNIVERSITY DR. **OPEN 8 A.M. TO 8 P.M.**

CULPEPPER PLAZA NEXT TO 3C-BBQ **OPEN 8 A.M. TO 8 P.M.**

We Buy All Books!

Bring your out-of-date books, with your new books & we'll make you an offer on all your books (including paperbacks).

Cold Hard Cash

University Book Stores

NORTHGATE 409 UNIVERSITY DR. **OPEN 8 A.M. TO 8 P.M.**

CULPEPPER PLAZA NEXT TO 3C-BBQ **OPEN 8 A.M. TO 8 P.M.**

Open 'til 8 p.m. through Finals