

Joint airfares necessary, consultant says

United Press International
WASHINGTON — Long-haul passenger airlines will be turning to regional carriers to formulate joint fare agreements as part of the airline industry's survival, an airline consultant predicted Thursday.

affiliated airlines — California-based World Airways Inc. and Air Midwest of Wichita, Kan.

"You're going to find more of these relationships as a central part of the survival of the airline industry," said Duffy.

William Duffy, executive vice president of the Boston-based airline consulting firm of Simat, Helliesen and Eichner, said more airlines are expected to follow the recent unusual joint fair decision of two non-

Duffy said such arrangements will bring more passengers, especially leisure travelers, to both airlines.

Duffy was in Washington, along with World Airways ex-

The larger airlines will be turning to smaller regional carriers for joint fare agreements as part of the airline industry's survival, an airline consultant predicted Thursday.

ecutive William Ziegler and Kansas City International Director Delbert Karmeier, to discuss the new fare agreement expected to benefit 30 smaller Midwestern cities within a 250-mile radius of KCI.

Ziegler said the World-Air Midwest arrangement is the first between non-affiliated airlines since deregulation. He said the airlines will share no facilities or personnel, only fares.

The 4½-year-old World Airways, which has been suffering financial difficulties because of

large debt service, contends the low-cost Oakland-based carrier's decision to choose Kansas City as its first new destination in 2½ years will mean improved service to small towns.

"Foes of deregulation usually point to statistics which show a decline in service to small towns over the past five years," said Ziegler. "But in this case, we expect the opposite to happen."

Ziegler said under the arrangement that began last week, Air Midwest passengers will be able to fly into KCI from

small towns in Arkansas, Kansas, Missouri, Oklahoma, Iowa and Nebraska and hook up with World non-stop flights to the East and West coasts, and overseas, for less than it would cost to fly out of KCI.

Duffy and Karmeier said the arrangement is expected to attract leisure passengers who otherwise might drive to KCI, rather than fly there, before taking flights to East and West coast destinations.

Karmeier said KCI has been active in trying to recruit new

airlines to serve the area following the decision of Braniff and Delta to back on flights by major airlines.

Duffy and Ziegler said the arrangement was chosen because of the potential for traffic to Kansas City area's economic growth. Kansas City is one of the nation's top 10 cities, Karmeier said.

Ziegler said he believes Midwest is considering an arrangement with Eastern airlines.

Officials disagree over seriousness of TB outbreak in Texas prisons

United Press International
HUNTSVILLE — The medical director of the Texas prison system says an epidemic of tuberculosis has occurred among inmates, but health officials who monitor the disease disagreed Thursday and said they were not greatly alarmed.

Officials at the Texas Department of Corrections and the Texas Department of Health have launched a TB testing program among the prison system's 36,000 inmates and 9,000 employees.

Tuberculosis occurs eight times as often in Texas prisons as in the general populace, a rate

prison medical director Dr. Armand Start said technically was an epidemic.

Gov. Mark White, reacting to Start's warning, said he would see that TDC corrected the problem "on an emergency basis."

However, Health Department officials said they were not alarmed by the findings, adding that the incidence of TB in Texas' prison system was no higher than expected considering the age, race, sex and socio-economic characteristics of its population.

"The rate is not eight times higher than if you took the same population group from, say,

Houston," said Robert Monroe, head of the health department's tuberculosis services division. "I don't know that it's an epidemic. It's not that far out of line with what we would expect."

Rick Hartley, a spokesman

In the strictest sense of the definition, yes, I guess you could say it was an epidemic — Rick Hartley, a spokesman for TDC.

definition, yes, I guess you could say it was an epidemic," Hartley said. "But from the common interpretation of an epidemic as being widespread and a big problem, no."

Monroe said 40 new cases of TB were reported at TDC from January through September. In 1982, 23 cases were reported.

"It's not as serious as it sounds," he said. "I'm not sure it's an epidemic or that it's raging. Based on the figures, we're not that alarmed. We are concerned."

Start said he realized TDC had a problem with the disease when a concentration of six TB

cases was reported at that unit.

"I couldn't believe in 1983 I'd have to deal with Start said. "I don't want to spend all this time, money and resources on a disease we have the tools to deal with in 1983. This is terrible."

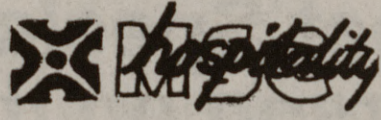
Start said 15,000 TB tests had been tested in recent months and the number would be tested by November. TDC quit testing new inmates more than two years ago because of overcrowding.

Tuberculosis is a lung disease that spreads in confined quarters.

DON'T WAIT 'TIL THE LAST MINUTE...

Sign up for the
MISS TAMU
 Scholarship
 Pageant

Deadline for application October 28



Switch off for Kick Off!!

Jordache and MSC Town Hall present

AIR SUPPLY

in concert
 G. Rollie White Coliseum
 Tickets: \$9.50, \$9.00, \$8.00

Rescheduled for Oct. 28



BRYAN LOCK & KEY
 Your key to security

7th Anniversary
 of serving the Brazos County
 107 W. Villa Maria
 BRYAN
 779-2594

10% Discount
 good only when you bring in this key.

Steel company expects layoffs

United Press International
WASKOM — A drop in orders and a faltering economy "finally caught up" with a northeast Texas fabricated steel plant and other officials said Thursday they

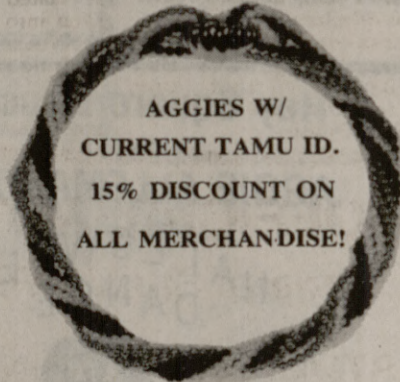
expect to lay off about 50 workers before the first of the year. The workers could be back to their jobs at the end of the economy improvement orders increase, said president Fletcher Thomsen.

TWISTIES ARE HERE!

Many different semi-precious stone beads ready to twist and wear!

Available in:

- Amethyst
- Onyx
- Coral
- Hematite
- Malachite
- Garnet
- Imit. Pearl
- Dyed Tourquoise
- Lapis
- Gold Filled
- Fresh Water Pearls
- Rodenite



AGGIES W/
 CURRENT TAMU ID.
 15% DISCOUNT ON
 ALL MERCHANDISE!

DOUGLAS JEWELRY

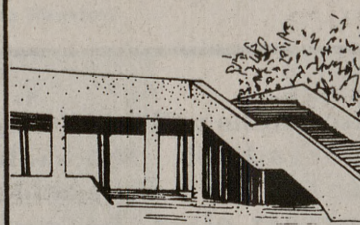
Culpepper Plaza
 College Station
 693-0677

212 N. Main
 Bryan
 822-3119

Now, Cash Convenience is Coming to Campus.

With FirstNet/Teller 2 or any other **pulse** member Bank Card you will soon be able to get cash fast right on campus. Situated conveniently near the MSC, the newest **pulse** Automatic Teller Machine will make getting cash even faster for the students, staff and faculty of Texas A&M University. If you're not on campus when you need cash, there are two more convenient locations in Bryan/College Station: Behind Culpepper Plaza on Dominik and at the FirstCity Bank on the corner of 29th Street and Texas Avenue.

New MSC Location



Between Rudder Tower & Memorial Student Center



Other PULSE member Bank Cards:
 Anytime, Teller 2, Boss Banker, Quicksilver, Ready Bank, Mini Bank, Dough Boy, Southwest Banking Card.

Another Convenient Location to Dash for Cash.



REACHING FURTHER. DOING MORE.

FIRSTCITY
 301 S. Texas Bryan
 Member FDIC