

**COUPON**

one potato, 75¢ off any 2 entrees with this coupon. Good 'till March 15.

two potato...

**COUPON**

Eat Out In CLASS

102 Church St. College Station 846-0720

Each Bite an EDUCATION in NUTRITION

Webster University TAMU

All our potatoes are Ph. D's PURE, HEALTHY, and Nutritiously DELICIOUS each of our ingredients is REAL and prepared FRESH each day

Spring Hours 7 days a week 11 a.m. to 10 p.m.

**COUPON**

**national**

Now you know

United Press International  
No music was played at Mozart's funeral because his family was too poor to pay for musicians.

Battalion/Page 12  
February 18, 1983

**What's Up**

**Friday**

**TAMU THEATER DEPARTMENT:** "Buried Child," a 1979 Pulitzer prize winning play, will be presented Thursday, Feb. 25, Feb. 26, March 3, March 4, and March 5 at 8 p.m. Tickets are \$2.50 and \$3.50.

**SWAMP:** SWAMP is sponsoring "Non-Event," a canned-food and clothing drive for the needy. All collected items will be given to the Twin City Mission. This is a perpetual charity drive representing charity as a way of life instead of an isolated event on some afternoon. Everyone should bring goods to our collection box in 216 MSC.

**COLLEGIATE FFA:** A spaghetti supper, honoring seniors, is scheduled for 6:30 p.m. at the A&M Methodist Church.

**AMERICAN INSTITUTE OF CHEMICAL ENGINEERS:** An AIChE Spring Bash is scheduled for 8 p.m. at the Treehouse Apartment's Party Room. Put on your party clothes and dancing shoes and head on over.

**ALPHA ZETA 'HONOR STUDENTS SERVING AGRICULTURE':** Student applications for membership are due by 5 p.m. today at 201 Agriculture Building and 122 Kleberg.

**MSC AGGIE CINEMA & MSC CEPHEID VARIABLE:** "Raiders of the Lost Ark" (Rated PG) will be shown tonight and Saturday at 7:30 p.m. and 9:45 p.m. in Rudder Theater. Admission is ONLY \$1. "Catch 22" (Rated R) will be shown at Midnight tonight and Saturday in Rudder Theater. Admission is \$1.50 with Texas A&M I.D.

**CROCKER & WALTON HALLS:** An all girls free Margarita-ville Party is scheduled for Friday from 8 p.m. to Midnight at the Knights of Columbus ballroom. For more information, call Barton Brown at 260-1292.

**MSC OUTDOOR RECREATION:** Sign up now in 216 MSC for the spring break trip — backpacking the Grand Canyon/Havasut. For more information come by the ORC cubicle at the SPO (216 MSC).

**HILLEL CLUB — JEWISH STUDENT CENTER:** Rabbi Cahana will visit from 11 a.m. to noon, and a basic Judaism class and a bagel break are scheduled from noon to 12:30 p.m. and 12:30 p.m. to 1:30 p.m., respectively. Also, an informal talk about Purim will be held.

**INTER-VARSITY CHRISTIAN FELLOWSHIP:** Everyone is invited for singing, sharing and Fellowship at 7 p.m. in 137 and 137-A MSC (under the hotel).

**INTERNATIONAL STUDENT ORGANIZATION:** Officer elections for 1983-1984 will be held at 7 p.m. in 701 Rudder.

**MSC HOSPITALITY:** Tom Joseph will play the banjo at noon

in the MSC Lounge to promote the Miss Texas A&M Scholarship Pageant.

**ASSOCIATED GENERAL CONTRACTORS:** Annual photos will be taken Monday through Friday now until Feb. 11 p.m. in 201 MSC. Admission is \$2.50 per person.

**SCHEDULING OFFICE:** All student organizations are encouraged to submit room reservation requests now until April 15 at the Scheduling Office for Fall 1983.

**Saturday**

**AGGIE ALLEMANDERS:** A "late" Valentines Day Dance featuring caller Sparks Doris is scheduled from 8 p.m. to 11 p.m. in 201 MSC. Admission is \$2.50 per person.

**INTRAMURAL-RECREATIONAL SPORTS:** The Texas A&M Ice Hockey Team will play North Texas State at 9:30 p.m. and Sunday at noon at the Spenco International Ice Arena 6800 Sanger (off Hwy 6) W. Waco.

**MUSCULAR DYSTROPHY ASSOCIATION — DANCE-A-THON:** Omega Phi Alpha and Alpha Phi Omega are sponsoring a dance-a-thon from noon today till noon Sunday at the Brazos Center to raise money for M.D.A. Prizes will be awarded to the top three money-raising couples.

**Sunday**

**UNIVERSITY LUTHERAN CHAPEL:** An informational on "What is Lutheranism" is scheduled for 4 p.m. at the University Lutheran Chapel, 315 N. College Main in the College Station Fellowship Supper followed by a film, "The Parable," is scheduled for 7:15 p.m. at the University Lutheran Chapel.

**CHI ALPHA:** Special vocal and instrumental music by the Chi Alpha Singers from Tulsa, Oklahoma will be presented at 11 a.m. at the College Heights Assembly of God, 4100 Old College Rd. in Bryan.

**MBA ASSOCIATION:** The 1983 Case Competition is scheduled from 1 p.m. to 5 p.m. at Rudder Tower. All faculty and students welcome.

**METAPHYSICAL SOCIETY:** Bing Escudero from Theosophical Society will speak on "Spiritual and Psychic Powers" at 2 p.m. in 302 Rudder. Admission is \$1 per member, \$2 per non-members.

**MSC AGGIE CINEMA:** The film series, "Swamp Fest," will be shown at 7:30 p.m. tonight and Monday in Rudder Theater. Admission is \$1.50 with a Texas A&M I.D.

**Chicken Fried Steak Dinner:  
At Fort Shiloh:**

**Only \$4<sup>95</sup>!**  
Sundays 5-10 p.m.

Includes a 5-6 oz. Chicken Fried Steak, baked potato or french fries, hot-and-fresh homemade rolls, tea or coffee, and a trip to our famous salad bar!

*A Complete Meal!*

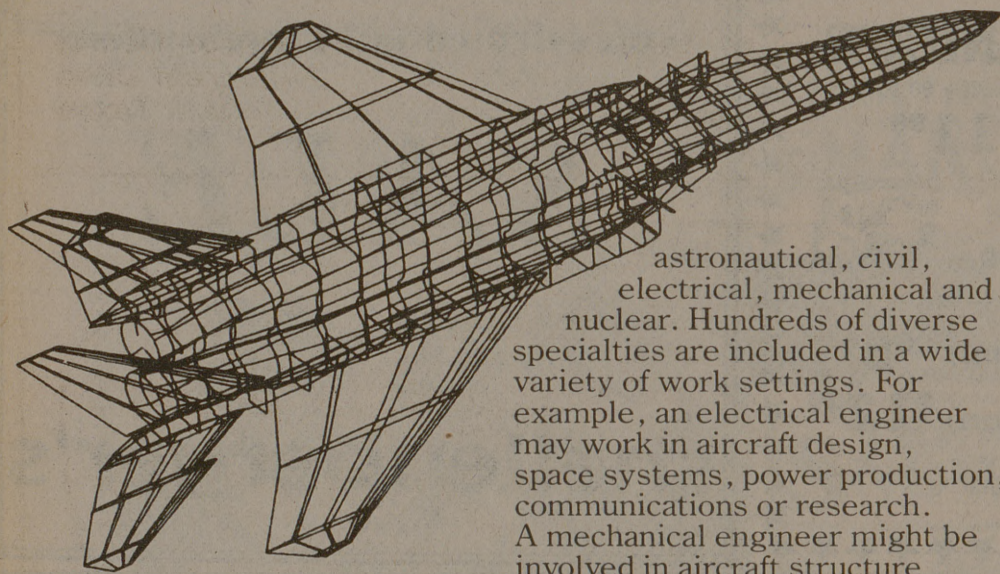


Mon.-Fri. 11 a.m.-2 p.m.  
5 p.m.-10 p.m.

Sat.-Sun. 11 a.m.-10 p.m.

2528 S. Texas  
College Station  
693-1164

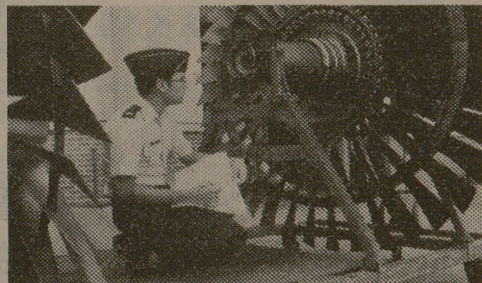
**ENGINEERING  
TAKES ON EXCITING  
NEW DIMENSIONS  
IN THE  
AIR FORCE.**



Computer-generated design for investigating structural strengths and weaknesses.

astronautical, civil, electrical, mechanical and nuclear. Hundreds of diverse specialties are included in a wide variety of work settings. For example, an electrical engineer may work in aircraft design, space systems, power production, communications or research. A mechanical engineer might be involved in aircraft structure design, space vehicle launch pad construction, or research.

**PROJECT RESPONSIBILITY  
COMES EARLY  
IN THE AIR FORCE**



Air Force mechanical engineer inspecting aircraft jet engine turbine.

Most Air Force engineers have complete project responsibility early in their careers. For example, a first lieutenant directed work on a new airborne electronic system to pinpoint radiating targets. Another engineer tested the jet engines for advanced tanker and cargo aircraft.

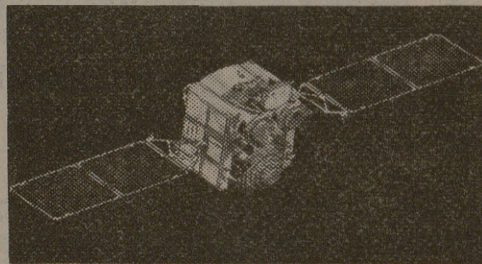
**8 CAREER FIELDS  
FOR ENGINEERS**



Air Force electrical engineer studying aircraft electrical power supply system.

Engineering opportunities in the Air Force include these eight career areas: aeronautical, aerospace, architectural,

**OPPORTUNITIES  
IN THE NEW  
USAF SPACE COMMAND**



Artist's concept of the DSCS III Defense Satellite Communications System satellite. (USAF photo.)

Recently, the Air Force formed a new Space Command. Its role is to pull together space operations and research and development efforts, focusing on the unique technological needs of space systems. This can be your opportunity to join the team that develops superior space systems as the Air Force moves into the twenty-first century.

To learn more about how you can be part of the team, see your Air Force recruiter or call our Engineer Hotline toll free 1-800-531-5826 (in Texas call 1-800-292-5366). There's no obligation.

**AIM HIGH  
AIR FORCE**

**Avalanche kills two,  
injures one on road**

**United Press International  
PITTSBURGH** — A blasting operation to remove overhanging rocks sent 400 tons of rock tumbling onto a highway, flattening a bulldozer, killing its operator and the driver of passing car and injuring another motorist.

Construction company officials said the rockfall Wednesday on Route 51 may have been caused by explosion vibrations that loosened a "mud seam," allowing the rock wall to accidentally give way. City officials planned to investigate and

closed the road indefinitely. The area of state Route 51 has a history of minor rock falls and crews have worked in the past month to ease the problem by removing sections of rock that threatened to tumble onto the busy commuter route. Workmen from the Construction Co. stopped on the four-lane highway to set off an explosive charge at 1:30 p.m. Traffic was allowed to resume, and the avalanche occurred about 15 minutes later and lasted about 10 minutes.

**SUPERIOR AUTO SERVICE**

Auto Repair at it's Best

111 Royal, Bryan

Just one mile north of Campus

846-5344

WAYNE PRITCHARD

DAN WASKOW



**MSC HOSPITALITY PRESENTS**

1983  
*Miss Texas*  
**A&M**  
*Scholarship Pageant*

**FRIDAY, FEBRUARY 25, 1983**

**7:00 PM**

**RUDDER AUDITORIUM  
TICKETS ON SALE NOW**

Students & Senior Citizens \$3<sup>50</sup> — Non-students \$6<sup>00</sup>

**AVAILABLE AT MSC BOX OFFICE**