

The Battalion Sports

January 20, 1983 Page 13

AD would favor Ag-'Runner game

From the sports desk: **Rudy Davalos**, athletic director at the University of Texas at San Antonio, says the Aggie runners would love to play Texas A&M in basketball. The Aggies are the only SWC school UTSA hasn't competed against.

"I think it would be great to get A&M on the schedule the next few years," Davalos said. "They play every year in the Dallas/Fort Worth area and they play every year in the Houston area which gives their alumni a chance to see them play. I know they have a lot of alumni support in this area too, so it would be very beneficial for both teams if we played one game there and one game here. It would give them the opportunity to play in front of their San Antonio alumni and it would give us the opportunity to play another Southwest Conference School."

In the first round of the tourney, Joelson outlasted Purcell 7-5, 6-4. Purcell, the 24th-ranked player in the world, won 300,000 while competing during 1982.

Joelson then defeated professional player Austin 6-3, 6-4 in the second round, but was eliminated by **Victor Amaya**, another touring professional, 7-5, 6-3, in the tournament quarterfinals.

Thanks, I needed that: Texas Tech head football coach **Jerry Moore** has received a second consecutive one-year extension on his contract, which now runs through 1987. Athletic Director John Conley said Tech's improvement was obvious, and that Moore

Invitational Track Meet, slated for Feb. 5 in Dallas. Among the college names to be featured are **Billy Olson**, named indoor athlete of the year by Track and Field News after breaking the world indoor pole vault record five times. Before the 1982 season, the record had been the 18'-5 3/4" that **Dan Ripley** cleared in Fort Worth in 1979. Olson beat that mark eight times last year, finally establishing a new record of 18'-10" at the NAAI championships. Olson is a student at **Abilene Christian University** ...

Akeem gets the point: The Houston Cougar basketball team was ready to board the plane from Hobby Airport in Houston to Austin the past Saturday when an elderly man approached sophomore **Akeem Abdul Olajuwon**. The man, less than 5-feet-8-inches, looked at the Cougars' 7-foot center and asked how many rebounds he had against TCU. Akeem said, "One." The man gave an astonished gasp, looked up and down, turned and walked away. Apparently Olajuwon decided not let that happen again — he had 14 rebounds against Texas on Saturday and 12 in the Coogs' victory over Texas Tech on Tuesday.

Joining elite company: Houston junior **Michael Young** became the 24th Cougar to score 1,000 career points when he had 18 against Texas Tech Monday night. Young is the third Cougar to reach 1,000 points this season, as **Clyde Drexler** and **Larry Micheaux** each reached that level against Pepperdine. Other members of the UH 1,000-point club include **Elvin Hayes** (No. 1 at 2,884 points), **Otis Birdsong** (No. 2 at 2,832), **Robert Williams** (No. 3 at 1,838), **Louis Dunbar** (No. 4 at 1,765) and **Dwight Davis** (No. 5 at 1,741).

Sports Mailbag

should be rewarded. The Red Raiders were the surprise team in the Southwest Conference this season, finishing with a 4-7 record and in a tie for sixth place in the SWC. Texas Tech defeated Texas A&M 24-15.

Doctor at work: Marquette University guard **Glenn "Doc" Rivers** scored the 1,000th point of his college career in a 71-65 victory over Arizona State earlier this month. Rivers, a 6-4 junior, became the 19th player in the school's history to accomplish that feat and the 10th player to score 1,000 points in three years or less. The Warriors, coached by **Hank Raymonds**, defeated Texas A&M 73-58 during December.

Track meet, anyone?: Track and field experts soon will demonstrate their skills at the **Dallas Times Herald**

Quote of the week: University of Texas basketball coach **Bob Weltlich**, after his team took an early 10-0 lead over the 14th-ranked Houston Cougars before losing 77-52 Saturday in Austin: "Houston is really good. There is no secret about that. That's why I don't like the 45-second clock. If we had been leading 10-0 without the clock, we would not have shot the ball the rest of the game." Texas has a 5-9 overall record and an 3 Southwest Conference mark. The Longhorns' problems continue to mount, as starting guard **Jack Worthington** quit the squad Monday due to the 'pressure of the UT basketball program.

Surprise in Portland: **Brian Joelson**, a senior member of the Texas A&M men's tennis team, defeated touring professionals **Mel Purcell** and **John Austin** in the Georgia Pacific Invitational tournament last week in front of a hometown crowd in Portland, Ore.

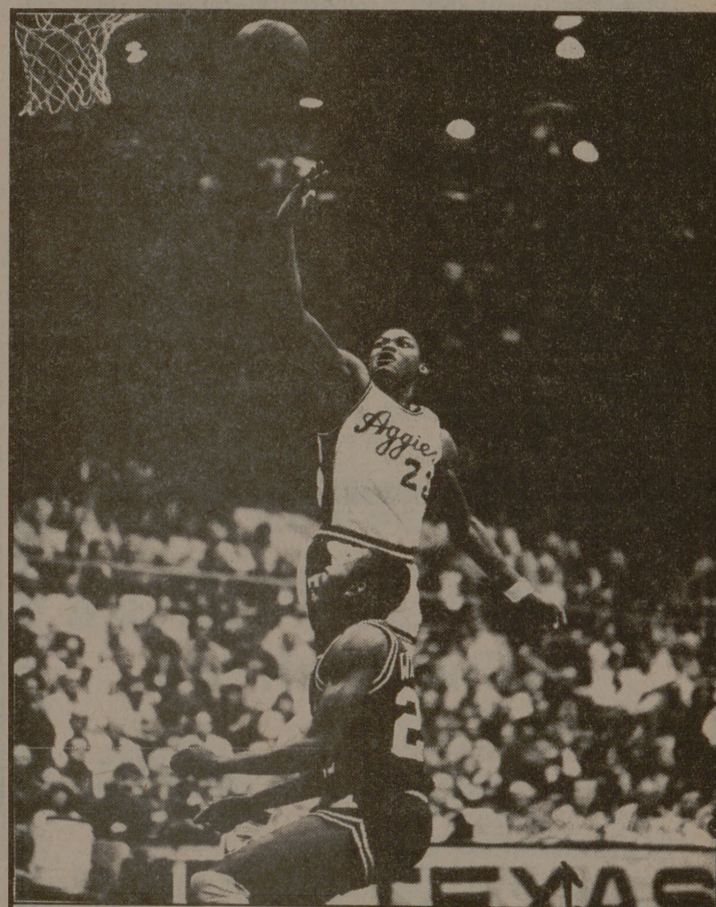
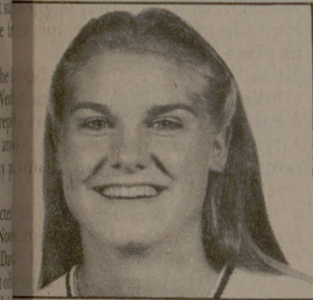


photo by Donn Friedman

Driving the lane

Aggie guard **Reggie Roberts** scores over Arkansas' **Darrell Walker** in the Razorbacks' 66-64 victory last week in G. Rollie White Coliseum. Roberts, who's averaging 17 points per game in Texas A&M's four Southwest Conference games, will lead the Aggies in Saturday night's home contest with SMU. The game will tip off at 7:30 p.m. in the coliseum, while the Aggie Ladies will host the Lady Mustangs at 5:15.

Turnovers crucial in Aggie Ladies' loss



Janet Duckham scores nine points in loss to Arkansas

The Arkansas Lady Razorbacks took advantage of several unforced turnovers to defeat the Aggie Ladies 75-67 in Fayetteville, Ark. Wednesday night.

Texas A&M, which never trailed by more than nine points during the game, saw its record drop to 8-9 on the season and 1-2 in the Southwest Conference. Wednesday's game, one of two being played between the two teams this season, will count on both teams' league records, due to the first-season format

being used this year in the SWC.

The Aggie Ladies trailed only 37-28 at halftime, but could never rally enough to overtake Arkansas, which now has a 10-4 record and a 2-0 SWC record.

Texas A&M coach **Cherri Rapp** said her team's turnovers proved to be keys to the Arkansas victory.

"Arkansas is a well-balanced team," Rapp said, "but we did it to ourselves. Unforced turnovers were one of the big problems — traveling, loss of passes and

loss of ball control."

Sophomore **Janet Duckham** led the Aggie Ladies with nine points and four other players had eight apiece. Those players were **Lynette Joiner**, **Jenni Edgar**, **Jackie Jones** and **Felice Lewis**.

Joiner added three rebounds, three assists and three steals. Sophomore post **Ann Trinka** led Texas A&M with six rebounds and Duckham had five.

The Aggie Ladies shot 42.6 percent from field and Arkansas connected on 58.9 percent of its shots. For the Lady Razorbacks, **Bettye Fiscus** had 14 points, **Amanda Holley** had 14, **Erma Greer** had 13 and **Doris Gaiser** had 10.

"We didn't deserve to win this

game," Rapp said. "We haven't played with any enthusiasm since Rice (which Texas A&M defeated 105-81 Jan. 8). We haven't played well and we haven't been aggressive. Somewhere, we are missing the key."

Rapp said after the game that she may change the starting lineup for Saturday's game against SMU in G. Rollie White Coliseum at 5:15 p.m.

"We have the capability of beating everyone in the SWC except Texas," she said. "But somehow we just aren't getting the production we need. We might have to see who we can put on the floor to help us to start winning."

Welcome Back Aggie Sale
ADD-A-BEADS & CHAINS

<p>14K Gold Beads SALE PRICES</p> <p>3 mm - 55¢ 4 mm - 90¢ 5 mm - \$1.53 6 mm - \$2.30 7 mm - \$3.00 8 mm - \$4.17</p>	<p>Add-A-Bead Chains SALE PRICES</p> <p>16" - \$31.50 18" - \$34.30 20" - \$37.80 24" - \$44.00</p> <p style="text-align: center;">All Sizes Available</p>	<p style="text-align: center;">CHARGE ACCOUNTS</p> <p style="text-align: center;">415 University 846-5816</p>
--	--	--

Kay & Co.
FINE JEWELRY
Formerly Cowarts Jewelry
All major credit cards accepted

M-F 9-5:30
Sat. 9-5

A small space
in the right place
makes...
A BIG SALE!
 The Battalion
Classifieds
845-2611

SUBARU

\$500⁰⁰

CASH BACK!

Ted Wilkinson cordially invites you to come by, look at and test drive a Subaru. Buy it and we pay you \$500⁰⁰ on the spot!* Now you can have the car and the money you need!

Call **BETH POSEY**, Subaru specialist, at 779-1000 and test drive a Subaru.

Subaru offers technology ahead of its time, complete with 12 month unlimited mileage factory warranty and GMAC financing.

Closed Saturday
OPEN SUNDAY

*Sunday only and only on 1982 models.

SUBARU.
INEXPENSIVE. AND BUILT
TO STAY THAT WAY.

Good people • Good prices • Good products

Ted Wilkinson

Pontiac • Buick • GMC • Subaru

601 Texas Ave. Bryan / 779-1000

Open 8-7 Mon.-Fri. 8-5 Sat.

1 FREE INTRODUCTORY CLASS OFFERED
 JAN 21 - JAN 27 OF
AEROBIC EXERCISE

- Morning Classes - 9:00 & 10:30 AM
- Evening Classes - 2:00, 3:00, 4:15, 5:30, 6:30, 7:45 (except on Fri.)
- Open 7 Days A Week
- Short Term Monthly Memberships - No Contracts
- Saturday Classes - 10:00, 11:00, 12:15
- Beginner Classes Available
- Sunday Classes - 3:00, 4:00

Return this Ad before our opening date
 January 28 and receive \$10.00 OFF on
 One Regular Month of Classes or 3
 Month Membership.

the waist basket

East Loop Hwy 5
29th St.
CHIMNEY HILL BUSINESS PARK
(400 Tarrow)
505 Shopping Center
Bryan Ave.

Tarrow Dr.
846-1013
402 Tarrow
College Station, Tx.

SCIENTIFIC SUBROUTINE LIBRARY FOR COMPUTER ANALYSTS, ENGINEERS, AND SCIENTISTS

Diversified Micro Applications proudly introduces the most powerful collection of scientific subroutines ever written for microcomputers. Before now these programs were only available on large mainframes. This collection of 72 distinct programs is up and running and can be working for you NOW on your TRS-80, Apple II with CPM, and most other CPM based machines. In seconds these programs will perform some of the most difficult and time-consuming problems you face. For example, you can solve Eigenvalue problems, invert matrices, solve differential equations, do multiple linear regressions, and much, much more.

Package includes six powerful libraries:

- POLYLIB** - This is a collection of 8 subroutines designed to handle polynomial operations of a very high order, including polynomial addition, subtraction, division, multiplication, evaluation, differentiation, integration, normalization, and extraction of roots, both real and complex.
- FUNCLIB** - This is a set of 10 subroutines designed to compute the value of a series when expanded in some special polynomial. FUNCLIB also computes the value of special functions such as the gamma function.
- MATLIB** - This is a collection of 13 very powerful matrix-handling subroutines which can be used individually or can be linked together to form program modules which perform successive matrix operations. These subroutines all use Variable Array Dimensioning.
- CALCLIB** - This is a collection of 7 subroutines designed to integrate, differentiate, and solve both single and systems of differential equations. The differential equations programs use the Fourth-Order RUNGE-KUTTA method.
- STATLIB** - This is a set of 26 different subroutines which can be used to calculate many statistical properties of various data. While most of the programs can be used individually, several can be grouped together to perform very sophisticated analyses, such as multiple linear regressions and polynomial regressions.
- MISCLIB** - This is a collection of 8 subroutines designed to calculate Fourier series and transforms, do least-squares fits, and to solve nonlinear equations.

DOCUMENTATION: Each diskette comes with over 100 pages of documentation detailing calling conventions and internal subroutine parameters. The manual contains sample programs, appendices and is well indexed.

MINIMUM SYSTEM REQUIRED: 32k RAM with dual disk drives. Package must be used with one of Microsoft's compilers. Subroutines are written in FORTRAN and are in the form of relocatable object code.

TO ORDER: Send check or money order in the amount of \$49.95 per copy made payable to:

DIVERSIFIED MICRO APPLICATIONS
 1735 Briarcrest Dr., Suite 212
 Bryan, Texas 77801
 (713) 779-5558
 (409) 779-5558

Telephone orders accepted. Please indicate the type of disk format required on your machine. Dealer inquiries invited. VISA and MASTER CHARGE accepted. Send card number and expiration date. Price includes shipping and handling. Immediate delivery.