

What's Up

Thursday

MSC VARIETY SHOW: Applications to perform in the 1983 MSC Variety Show are available now at the secretary's desk in 216 MSC. Deadline for applications is Feb. 4.

STUDENT 'Y' — FISH CAMP '83: Applications for Chairman, Sub-Chairman and Recreation Coordinator are available now at the Student 'Y' secretary's desk at 216 MSC. The deadline for applications is 5 p.m. on Friday.

STUDENT PUBLICATIONS: Pictures will be taken in 137 MSC now through Friday. Also, Juniors, Seniors, and Graduate, Veterinary, and Medical students may have their pictures taken between the hours of 9 a.m. and 5 p.m., Monday through Friday, at the Yearbook Associates at 1700 Puryear Dr. For more information, call 693-6756 or 845-2611. The final deadline for pictures is Dec. 17. No make-ups will be allowed after this date.

AMNESTY INTERNATIONAL CAMPUS NETWORK: An effort to resurrect this organization is being made. Students should be interested in promoting student awareness of individual rights and should contact John Cook at 696-3241 if interested.

CAMPUS CRUSADE FOR CHRIST: A Christmas party will be held at 7:30 p.m. in 701 Rudder.

BLACK AWARENESS: A Minority Faculty Reception will be held at 6:30 p.m. in 145 MSC.

ANIMAL SCIENCE FIELD STUDY TRIP MEETING: A meeting will be held at 9 p.m. in 400-A AnSc Building. Plans for Animal Prod. Field study trip (Jan. 9 - 15) will be discussed.

F.O.H. CLUB (FLORICULTURE ORNAMENTAL HORTICULTURE): A Christmas Party will be held at 8 p.m. at the Unitarian Fellowship Hall.

PARENTS' DAY COMMITTEE: Aggie "Parents of the Year" applications will be available Nov. 18 through Dec. 17 in 216 MSC. Deadline for applications is Jan. 25, 1983.

AGRICULTURE ECONOMICS CLUB: A End of the Year Party will be held at 7:30 p.m. at Mama's Pizza.

CIRCLE K: The group will meet in front of Rudder at 6:30 p.m. to go to the Grapevine for our final meeting. Also,

the group will go Christmas caroling Sunday at 3 p.m.

THE WAY CAMPUS OUTREACH: A special presentation on "The Birth of Jesus Christ" will be shown at 7:30 p.m. in 404 Rudder.

UNIVERSITY LUTHERAN CHAPEL: The group will meet at the University Lutheran Chapel, 315 N. College Main in College Station at 6:30 p.m. to go visit and sing at the Sherwood Nursing Home.

FRESHMAN AG SOCIETY: A Christmas party will start at 7:30 p.m. in the Scoates Building's Domino Room (first floor).

Friday

MSC VARIETY SHOW: Applications to perform in the 1983 MSC Variety Show are available now at the secretary's desk in 216 MSC. Deadline for applications is Feb. 4.

STUDENT 'Y' — FISH CAMP '83: Applications for Chairman, Sub-Chairman and Recreation Coordinator are available now at the Student 'Y' secretary's desk at 216 MSC. The deadline for applications is 5 p.m. on Friday.

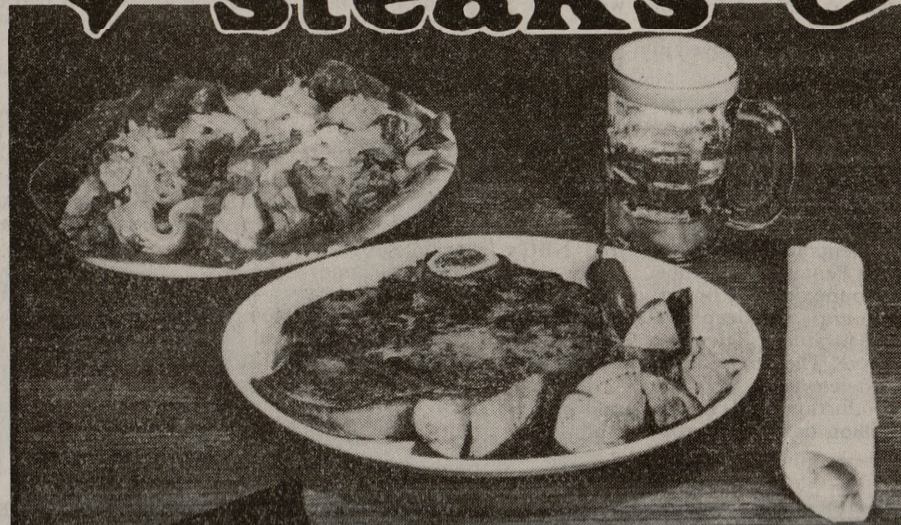
STUDENT PUBLICATIONS: Pictures will be taken in 137 MSC now through Friday. Also, Juniors, Seniors, and Graduate, Veterinary, and Medical students may have their pictures taken between the hours of 9 a.m. and 5 p.m., Monday through Friday, at the Yearbook Associates at 1700 Puryear Dr. For more information, call 693-6756 or 845-2611. The final deadline for pictures is Dec. 17. No make-ups will be allowed after this date.

INTER-VARSITY CHRISTIAN FELLOWSHIP: A worship service will be held at 7 p.m. at the Canterbury House on Jersey st. across from bonfire. Refreshments will be served afterwards.

TAMU BAPTIST STUDENT UNION: The last free International Student Dinner of this semester will be held at 7 p.m. at the Baptist Student Center. Shish kebab will be served.

HILLEL JEWISH STUDENT CENTER (HILLEL CLUB): Chanukah Pot Luck Dinner will be served at 6 p.m., services will begin at 7:30 p.m. and an Oneg Shabbat will be held after the services at the Hillel Club.

HOFFBRAU steaks



Lunch Specials

- Chicken Fried Steak \$3.95
- 7 oz. Ribeye 5.25
- Shish-ka-bob 4.95
- Chopped Sirloin 3.75
- 10 oz. Boneless Chicken Breast 4.50

All served with our famous salad, fried potatoes and bread.

Hoffbrau steaks are grilled in a savory butter sauce that brings out all the natural flavor in beef. It's different and it's delicious!

And remember our Happy Hour is weekdays from 3 'til 7 with 2 for 1 drinks.

HOFFBRAU steaks

The best thing that ever happened to beef!

317 So. College Avenue, 260-9172
Mon. - Sat., 11 a.m. - 10 p.m. & Sun., 12 - 10 p.m.
Banquet facilities are available.

Conflicts divide committee

Old-age tax has support

United Press International
WASHINGTON — Leading members of the commission seeking to save Social Security say the group is deeply divided and they want the president and House speaker to hold a summit meeting to endorse proposals on bailing out the retirement system.

Commission members Rep. Barber Conable of New York, ranking Ways and Means Republican, and National Association of Manufacturers President Alexander Trowbridge urged President Reagan and House Speaker Thomas O'Neill to call a summit meeting to agree on a Social Security compromise.

O'Neill backed a tax on Social Security benefits for Americans who earn more than \$25,000 a year.

The New York Times reported O'Neill and Ways and Means Chairman Dan Rostenkowski favor limited taxation of Social Security benefits. Commission Democrats made a similar proposal in a funding package O'Neill approved. Aides downplayed reports of support from Rostenkowski.

O'Neill said Tuesday he may continue to support the tax on benefits for those who earn more than \$25,000 a year, but will await the commission's report before making decisions.

Rostenkowski aides said O'Neill wrote members of Congress last month saying taxing benefits should be considered,

but said he believes the idea is only one of many options.

The National Commission on Social Security Reform, which must report by year's end, is scheduled to meet Friday.

Unless O'Neill and Reagan can agree on Social Security recommendations, Conable and Trowbridge said they believe the commission will be reluctant to endorse specific proposals that might be shot down.

Senate Finance Chairman Bob Dole, R-Kan., and Senate Aging Chairman John Heinz, R-Pa., also have urged Reagan and O'Neill to meet.

O'Neill said he is not looking for a meeting.

Conable said he has more or less given up the idea of a strong report. He said the commission probably will list options to raise the \$200 billion that Social Security needs by 1990.

"I regret we have broken down into political camps," Conable said.

Trowbridge said there is some movement toward com-

promise, but they aren't close yet.

Trowbridge is floating a proposal that would speed up payroll tax hikes, delay the annual cost-of-living increase by three or six months, raise self-employed taxes, require federal workers to join Social Security and increase the retirement age to 66.



JEFF'S PERFORMANCE CENTER
1801 Cavitt

- Tune-Ups
- Starters
- Clutches
- General Auto Repairs
- Performance & Efficiency Mods
- Stock & Custom Engines
- Corvette Repairs of all Types
- Hi-Performance Parts & Accessories
- All Work Fully Guaranteed
- Carb Repairs
- Alternators
- Brakes

Bryan 822-4934

The Unicorn & Which Witch?

"Capture a Unicorn" in Silver, Pewter, Brass, or Ceramics

HYWAY 30
WOODSTONE CENTER
BEHIND MUSICIANS' WORLD

696-4005

Shop Loupot's For Christmas!

Loupot's is your headquarters for

- Aggie Specialty Gifts
- T-Shirts
- Calculators

Loupot's now has parking out back!
Free one parking for all customers!

LOUPOUT'S
BOOKSTORE

— Northgate —

Across From the Post Office



WESTERN WORLD

BOOT SALE

SAVE
27% to 56%

Tony Lama
Bona Allen
Acme
Nocona

Abilene

Justin
Cowtown

Not all sizes and styles available.

- \$25⁰⁰ OFF ANY RESISTOL HAT IN STOCK Reg. \$55⁰⁰ to \$85⁰⁰
- PANHANDLE SLIM GOLDEN WEST SHIRTS (100% COTTON) \$35⁰⁰-\$41⁹⁵
- 1/3 OFF ANY BELT IN STOCK

3808 TEXAS AVE.
STORE HOURS 9 A.M.-8 P.M. M-F
10 A.M.-6 P.M. SAT.

900-1 HARVEY RD.
STORE HOURS 10 A.M.-9 P.M. M-F
10 A.M.-6 P.M. SAT.