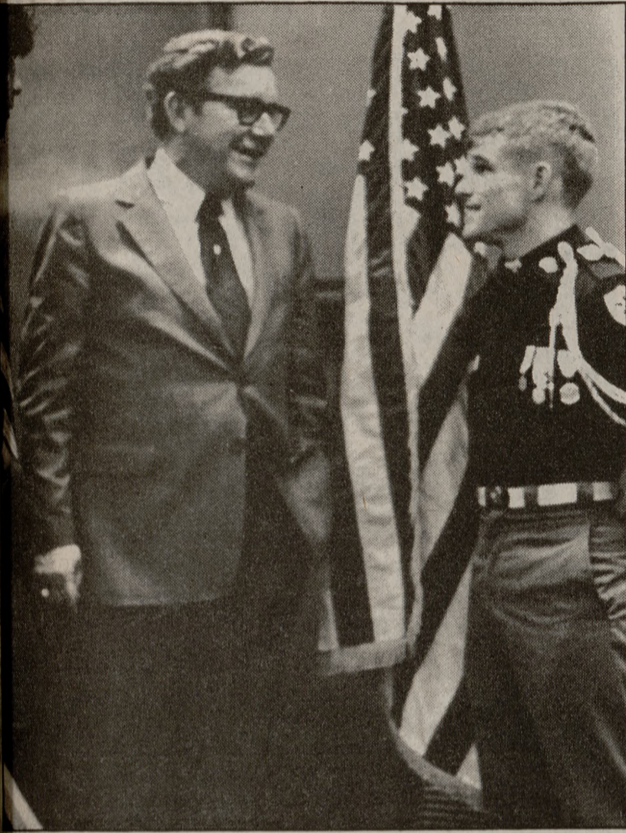


Senate hears ag commissioner



staff photo by Irene Mees

Reagan Brown, left, Texas commissioner of agriculture, talks with the speaker of the Student Senate, Brian D. Terrell.

by Beverly Hamilton

Battalion Staff
The Texas agricultural commissioner advised student senators Wednesday to "sell" Texas A&M University, democracy and the American way of life whenever possible.

"You have what our country needs today — leadership and participation," said Reagan Brown, Texas' lame-duck agricultural commissioner. "Leadership on this campus may determine whether you keep your freedom. Sell A&M every time you get a chance as well as our democracy and our way of life."

Brown, who was the special guest of Speaker of the Senate Brian Terrell, said he feels the United States has the finest group of young men and women today and that visiting the Texas A&M Student Senate has reinforced his thoughts.

During the meeting, senators unanimously passed a recom-

mendation to widen the sidewalks leading to the Academic and Agency building to allow for better pedestrian flow.

If the proposal is approved by University President Frank E. Vandiver, the sidewalk changes may be made during the Christmas holidays.

The Academic Affairs Committee killed a proposal recommending that advisers and pre-registration workers stagger their lunch hours so they would be available to register students during the noon hour.

The decision to kill the bill was made after committee members called the deans of the academic colleges and found most of the colleges are too understaffed to stagger lunch hours.

The Student Services Committee recommended that a committee be formed to research the bicycle situation on campus because of frequent bicycle accidents and pedestrian-

bicyclist disagreements.

The committee will be formed to aid the Texas A&M traffic panel which studies University traffic situations. The panel is currently conducting a feasibility study on parking and traffic flow and has requested student input through the Student Government.

Also during the meeting, the Speaker of the Senate declared the following seats vacant: College of Liberal Arts graduate representative, Walton/McInnis/Schuhmacher/Hotard representative and the off-campus Ward II representative. Senators voted to accept applications for the vacancies Jan. 27 through Feb. 4.

In addition, engineering at-large Senator Chip Heath was named Senator of the Month for his outstanding work with Student Government and the appointment of Lain Ellis as the College of Liberal Arts senior representative was approved.

Financial aid office to move

by Ann Ramsbottom

Battalion Reporter
After Christmas break, students going to the financial aid office will have to change their route.

The office, currently located on the third floor of the YMCA Building, will be moved to the second floor of the newly renovated Animal Science Pavilion near the Sterling C. Evans Library.

Alvin Bormann Jr., assistant director of student financial aid, said the new building is more centrally located and will give the department more than twice as much floor space.

"We hope to create a pleasant atmosphere for students," he said. "We are student-service oriented and we don't like to create obstacles such as being in an inconvenient location or crowded and cramped facilities."

The extra space also will allow all of the financial aid office's major operations to be in one location. Currently, data and word processors used by the office are in another building.

"One of the new services we plan to offer is a loan teller's window," Bormann said. "This service will feature a \$30 loan program in which students will be

charged a 25 cent fee for a \$30 month-long loan."

Services now offered by the financial aid office will continue, including long-term and short-term loans, Pell grants and institutional and outside scholarships.

After the financial aid office has relocated, the Student Counseling Service will move from the YMCA basement to the third floor.

"I hesitate to guess just when we will move," said Wade Birch, director of Student Counseling Services. "Hopefully it will be before the end of the spring semester."

Birch said the move should clear up some organizational problems.

"Presently, the personal counseling is in the YMCA basement, but the academic counseling is in the academic building," Birch said. "This creates a communication problem."

When the move has been completed, both counseling services will be able to function from the same organizational system, Birch said. Also, the two part-time consulting psychiatrists may be more conveniently and efficiently utilized by both counseling services.

Christmas
Open House

Door Prizes of Holiday Decorations
Refreshments

Saturday, Dec. 4
10 a.m. to 5 p.m.

Petal Patch
707 Shopping Village 696-6713
Petal Patch, Too
Post Oak Village Hwy. 30 764-0091

MUSIC EXPRESS & WEA Wrap It up!

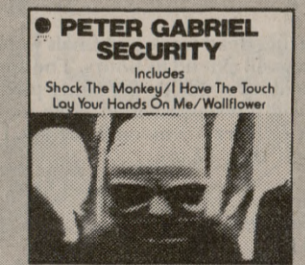
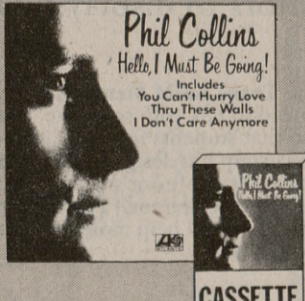
"STORE WIDE" ALBUM & CASSETTE

SALE

EVERYTHING IS ON SALE —
FEATURING THESE WEA ARTISTS.

\$5.55

EACH
(8.98 list)



| Mfg. List | Sticker | Sale |
|------------------|----------------------------------|--------------------|
| 8 ⁹⁸ | 6 ⁹⁹ /7 ⁹⁹ | \$5 ⁵⁵ |
| 9 ⁹⁸ | 7 ⁹⁹ /8 ⁴⁹ | \$6 ⁶⁶ |
| 11 ⁹⁸ | 10 ⁴⁹ | \$8 ⁸⁸ |
| 13 ⁹⁸ | 12 ⁴⁹ | \$10 ¹⁰ |
| 14 ⁹⁸ | 13 ⁴⁹ | \$11 ¹¹ |
| 15 ⁹⁸ | 13 ⁹⁹ | 12 ¹² |



Thru. Sat. Dec. 4



MUSIC EXPRESS

725-B UNIVERSITY DRIVE

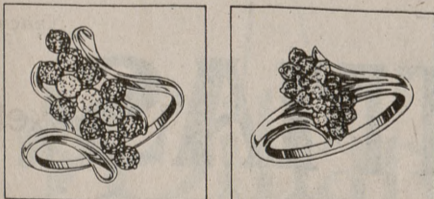
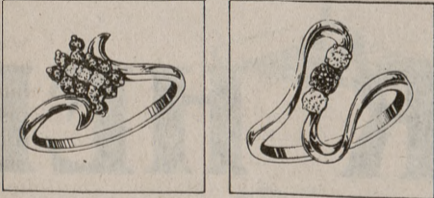
OPEN 10-10

"Behind Skaggs & McDonalds"

846-1741

Diamonds and a Rainbow of Precious Stones

Rubies • Sapphires • Emeralds



30% OFF

Kay & Co.

M-F 9-5:30 Sat. 9-5 **FINE JEWELRY** 415 University 846-5816

Formerly Cowarts Jewelry

LAYAWAYS CHARGE ACCOUNTS

Rings in stock may vary from illustrations