

Battalion Football Forecast	Frank L. Christlieb	John Wagner	John P. Lopez	Joe Tindel Jr.	dp	Reveille
TCU at Texas A&M	Texas A&M by 3	Texas A&M by 1	Texas A&M by 10	Texas A&M by 3	Texas A&M by 3	Texas A&M by 9
Arkansas at SMU	SMU by 3	SMU by 7	SMU by 6	SMU by 2	Arkansas by 1	SMU by 2
Texas at Baylor	Texas by 7	Texas by 3	Baylor by 3	Texas by 10	Baylor by 1	Texas by 4
Houston at Texas Tech	Texas Tech by 1	Texas Tech by 5	Houston by 7	Houston by 4	Texas Tech by 2	Texas Tech by 4
USC at UCLA	UCLA by 4	UCLA by 2	UCLA by 10	UCLA by 7	UCLA by 1	UCLA by 2
Miss. State vs. Mississippi (Jackson, Miss.)	MSU by 10	MSU by 4	MSU by 6	MSU by 3	MSU by 3	MSU by 1
Florida State at LSU	FSU by 6	LSU by 8	LSU by 3	LSU by 1	FSU by 7	LSU by 1
Michigan at Ohio State	Michigan by 3	Michigan by 1	Michigan by 10	Michigan by 7	Michigan by 7	Michigan by 1
Yale at Harvard	Harvard by 7	Harvard by 14	Yale by 6	Harvard by 6	Yale by 7	Princeton by 2
Bryan vs. Conroe (Tully Stadium, Houston)	Bryan by 7	Bryan by 10	Bryan by 7	Bryan by 14	Bryan by 6	Bryan by 5
Season percentages:	70-30, .700	63-37, .630	64-36, .640	67-33, .670	65-35, .650	70-30, .700

Gymnasts

(continued from page 18) is coached by Hartwell and competes only on the \$500 allotted by the Texas A&M Intramural Department. In the four years Hartwell has been with the team,

that amount has ranged from \$700 to \$1,000, but this year has been cut in half to \$500.

There are no varsity gymnastics squads in Texas, and the

Southwest Conference doesn't recognize the sport. But Hartwell said the Aggies hope the future holds brighter prospects.

"We're looking to have some money and to do some recruit-

ing and to see if the Athletic Department will take us on, too," he said. "Every year I've been here, this team has gotten so much better."

T.S.O.
Prescriptions Filled
Glasses Repaired
BRYAN
216 N. Main 799-2786
Mon.-Fri. 8-5 Sat. 8-1
COLLEGE STATION
8008 Post Oak Mall .. 764-0010
Mon.-Sat. 10-9 p.m.
TEXAS STATE OPTICAL
Since 1935.

"Well let me put it this way
I keep mine in the refrigerator!"



*The Twelve Men
of Aggieland*

MSC Bookstore

THE PERFECT GIFT



Everyone will enjoy the subtle yet always appropriate message conveyed by this handsome plaque. It's a totally high quality item that you'll be pleased to give or display. A full 6" x 6" it features:

- Deeply Etched Metal
- Two Color Enameling
- Walnut Veneer
- Beautiful Gift Box
- Satisfaction Guaranteed

Great for dorm, home, or office. The best way to handle your gift list.

Original Designs
P.O. Box 594
1572 Lindenhurst Dr.
Centerville, Ohio 45459

Visa/MasterCard Accepted

Please send me _____ plaques at \$15.95 each (plus \$1.50 postage & handling*) I enclose a check or money order for \$_____

Name _____
Address _____
Visa/MasterCard # _____
Exp. Date _____
Signature _____

Ohio residents add 6% sales tax.

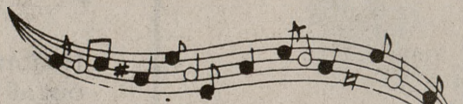
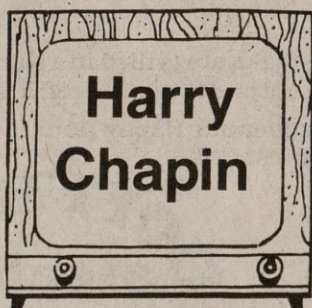
The Battalion
Since 1878

MSC VIDEO PRESENTS



MONDAY
NIGHT
VIDEO
CONCERT
SERIES

Showing this Monday



at 8pm
in
RUMOURS

Admission Free Concessions Available
An MSC Video - MSC Basement Event

Hey Juniors!

The Bee Hive Boutique
is having a **SALE**

All Fall and Winter
Merchandise is

20% off
Friday & Saturday

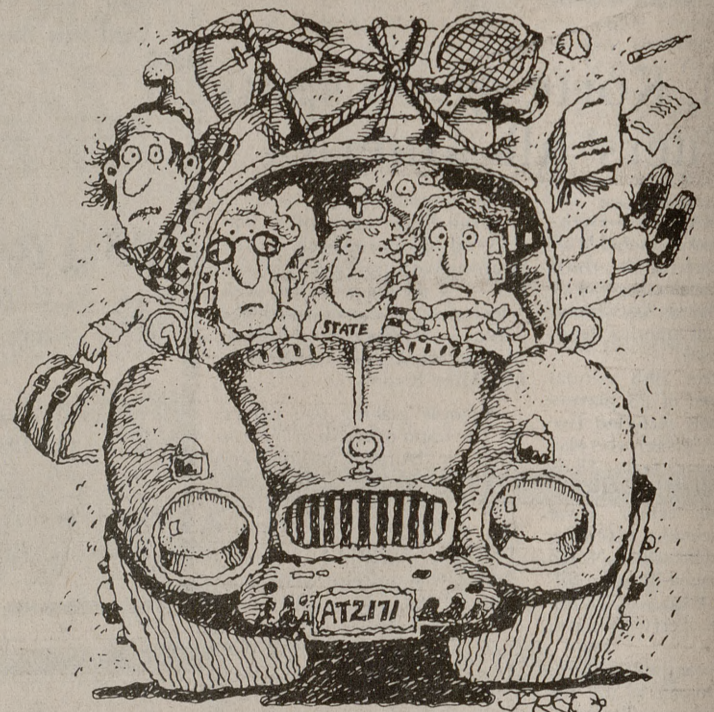
The Bee Hive

BOUTIQUE

"Personal Attention for Today's Woman"

1422 Texas Ave. So
College station

Next to Gibson's
Layaways Invited



"Only a turkey should be stuffed like this on Thanksgiving."

There's a better way to get there this Thanksgiving.

Greyhound is going your way with trouble-free, economical service. You can leave directly from campus or other nearby locations. Most schedules have stops at convenient suburban locations. And talk about comfort. You get a soft, reclining seat and plenty of room for carry-on bags.

So next trip, go with the ride you can rely on. Go Greyhound.

Schedules operate every weekend except during holidays, exam week and semester break. Prices and schedules subject to change. Some service requires reservations.

GO GREYHOUND
And leave the driving to us.

©1981 Greyhound Lines, Inc.