

Around town

Arvey to speak at Scholar Series

Dr. Richard Arvey, one of the country's leading authorities on employee selection, will be on campus Nov. 16. Arvey, professor of industrial psychology at the University of Houston, will be participating in the **College of Business Administration Visiting Scholar Series**.

Arvey will speak on "Fairness in Employee Selection" Nov. 16 at 11 a.m. in 153 Academic and Agency Building. At 5 p.m. the same day, he will speak on "Current Issues in Employee Selection" in 161 Academic and Agency Building.

The local business community as well as the University community are invited to the talks and admission is free. For further information contact **Dr. William H. Mobley**, Associate Dean of the College of Business Administration, at 845-4713.

Teaching award nominations begin

If you are a student taking a liberal arts class and have a professor whom you consider outstanding, now is your chance to get him or her recognition. The **Liberal Arts Student Council** will begin taking nominations for **Teaching Excellence Awards** Monday.

Boxes will be set up on the first floor of both the Academic Building and Academic and Agency Building to take nominations Nov. 15 through Dec. 6.

You do not need to be a liberal arts major to nominate your favorite liberal arts professor.

Parks Department seeking volunteers

The **College Station Parks and Recreation Department** is asking for volunteers to help with the planning and organization of the **Fifth Annual Spring Arts Festival**. The festival will be held on April 23 at Central Park.

If you or your organization are interested in helping with the Festival, an organizational meeting will be held Nov. 17 at 3 p.m. at the Community Center at 1300 Jersey Street.

For further information contact the **College Station Parks and Recreation Department** at 696-4753.

Model train open house announced

The **Brazos Valley Model Railroad Society's 5th annual open house** will be held from 10 a.m. until 9 p.m. on Nov. 30 at the Clubhouse on Roundtree Drive in Bryan.

In addition to the 250-foot mainline which was completed in 1979, this year's layout will include several partially completed switching yards, an engine repair facility, a narrow gauge section and greatly expanded scenery.

Several trains will operate continuously over the entire layout for the duration of the open house.

Members of the Brazos Valley Model Railroad Society will also be available to answer questions about the club layout and club membership, as well as model railroading in general.

The event is open to the public and is free. Children are welcome but must be supervised.

The clubhouse is located one block west of College Avenue on Roundtree Drive, which is just north of Country Club Lake.

Bicycle club to sponsor ride Sat.

The **Texas A&M Bicycle Club** is sponsoring their annual 100-mile **Fall Century Ride** this Saturday. Maps will be handed out at registration which begins at 7:30 a.m. Saturday at Rudder Fountain. The registration fee is \$3 and patches will also be available for \$3.

There will be a prize awarded for the most "half-fast" century rider (the person coming closest to the average time for the 100-mile course).

A "sag-wagon" will be available to provide tools for minor breakdowns and food and water.

For more information, contact **Kevin Jones** at 260-2270.

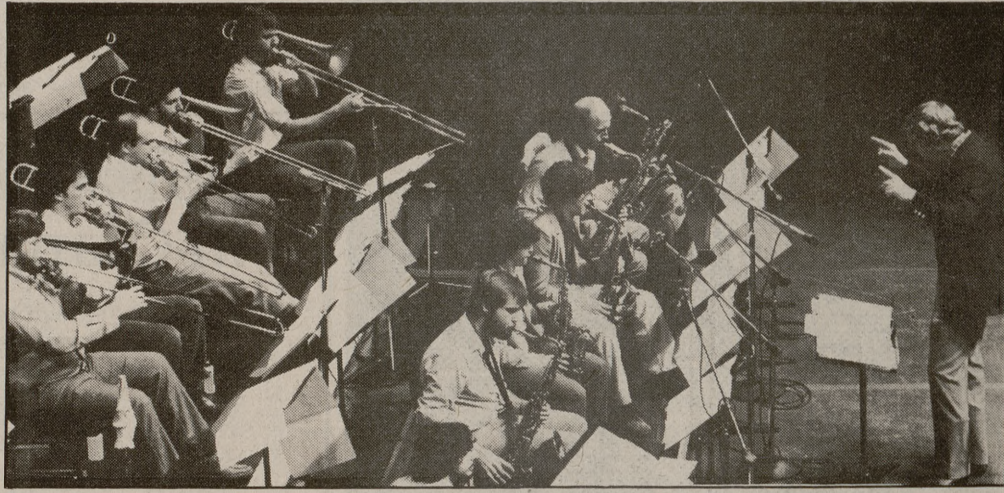
WSI students to hold swim-a-cross

The students of the **water safety instructor class** are organizing a **SWIM-A-CROSS** for this Sunday from noon to 6 p.m.. Texas A&M students in all levels of swimming are being asked to volunteer to swim as many lengths as possible in a half hour.

Each student is finding sponsors to donate money for each length (25 yards) completed or to donate a set amount of money regardless of the distance.

The money raised from the SWIM-A-CROSS will be donated to the Brazos County Chapter of the American Red Cross. It will enable the chapter to continue providing services in the Bryan-College Station area and the whole Brazos Valley.

If you have an announcement or interesting item to submit for this column, come by The Battalion office in 216 Reed McDonald or call Tracey Taylor at 845-2611.



staff photo by Ron Emerson

The North Texas State 1 O'Clock Lab Band's Thursday-night performance in Rudder Auditorium was highlighted by numerous individual performances.

1 O'Clock band features solos

by Rebeca Zimmermann
Battalion Staff

A standing ovation by an enthusiastic crowd Thursday night brought an encore from the North Texas State 1 O'Clock Lab Band — after the band performed 11 pieces.

But it was the numerous improvisational solos by band members that highlighted the performance.

The band, composed of 20 musicians and directed by Neil Slater, performed pieces written by several famous musicians — including Richard Rodgers, Freddy Hubbard, Charlie Parker — and also some original compositions by members of the band.

A version of "My Favorite Things," a Richard Rodgers number from "The Sound of Music," was performed in 5/4 time instead of the traditional waltz tempo in which the piece originally was composed.

Slater said "Donna Lee," a chart by jazz saxophonist Charlie Parker, was written for saxophones.

"To make it harder," he said, "some crazy fool at North Texas wrote it for trombones."

And the trombones handled it quite well.

The lead trombonist, Bob Conger, performed with excellent style and a smooth tone.

Other band members were featured throughout the performance.

At times, the concert seemed to be the "Chip McNeill Show." McNeill, who plays tenor and alto saxophone and flute in the group, wrote several numbers which the band performed.

The first number the band performed, "Gazing on the Mindless Expanse," was written by McNeill. In the piece, McNeill has a tenor saxophone solo which starts slowly but improved with time.

"Prelude to Genesis," written by McNeill, opens with McNeill playing flute. McNeill, a talented composer and performer, but his flute playing differed from a typical saxophonist's frequently airy tone.

The chart seems to live up to its name. It opens with other-world and strange tones. Chimes throughout the piece add a sense of mystery.

Paul Mazzio, the lead trumpeter for the band, has a lovely, mellow flugelhorn solo in "Prelude to Genesis."

The final frontier in McNeill's compositions was reached when the band played "Captain Goes Trout Fishing." Mazzio has a number of high-pitched solos with trilling interludes reminiscent of "alien babbling."

The chart also featured a drummer and the percussion. While passing through an arid belt, the percussionist aged to break four drums.

In a more traditional piece, Mazzio was featured in the number "Yesterdays" by Jerome Kern. Mazzio's powerful projection and full-bodied sound delighted to hear. The band led Mazzio to perfection; his sound was nicely blended and effective.

Slater introduced Mazzio as the "old-timer" of the group. He's been with the band for 12 years. Mazzio's first NTS 1 O'Clock Lab Band concert was at Texas A&M.

The band's encore was "Labido," by Don Schamber. Slater put said, it was a chance to hear the percussionist "work out with their toys."

The piece has a catchy percussion beat to it. The only special effects was the guitar can lid cymbals. The music sounded very similar to a storm on a tin roof.

MSC TOWN HALL

WARM UP TO BONFIRE WITH

WILLIE NELSON
FRIDAY, NOVEMBER 19 G. ROLLIE WHITE
8:00 p.m.
TICKETS: \$10, \$11⁵⁰, \$12
MSC BOX OFFICE 845-1234

MSC TOWN HALL

Desserts On Us At
McDonald's[®]

Get a dessert of your choice
FREE

with every purchase of \$2.50 or more

Offer good Fri., Sat. & Sun.

Bryan-College Station
5 p.m. til Close

GIG 'EM AGGIES
BEAT ARKANSAS
FUN • FOOD • DRINK =

CULPEPPER PLAZA

DIETING?

Even though we do not prescribe diets, we make it possible for many to enjoy a nutritious meal while they follow their doctor's orders. You will be delighted with the wide selection of low calorie, sugar free and fat free foods in the Souper Salad Area, Sbis Dining Center Basement.

OPEN
Monday through Friday 10:45 AM-1:45 PM

QUALITY FIRST

TAKE A TURKEY TRIP with MSC OUTDOOR RECREATION

Backpacking Nov. 25-28 Caney Creek Wilderness Area, Arkansas

Rafting/Canoeing Nov. 25-28 Rio Grande River — Big Bend National Park

Come by 16 MSC or call 845-1515 for more information

Thousands put their fingers on it...

Advertising in The Battalion
845-2611