

Texas A&M

# The Battalion Sports

November 9, 1982 Page 7

Weltlich faces rebuilding year

## Rice, SMU, Texas optimistic

By Frank L. Christlieb

Sports Editor

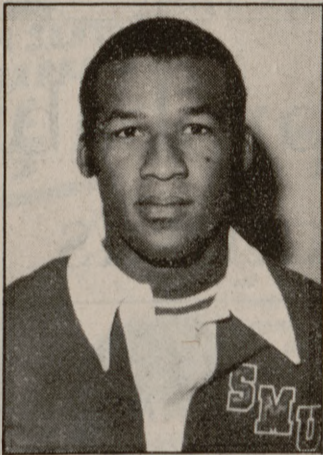
DALLAS — Dave Bliss says the sheep will wander no more. Whereas his SMU Mustang basketball team found the going rough at times within a crowd of Southwest conference wolves last year, Bliss doesn't look for such a stormy season in 1982-83.

"We didn't have the experience we needed last season, so we were sheep wandering in the desert half the time," Bliss said at Sunday's preseason meeting of SWC coaches in Dallas. "Now, we have a little bit more direction and that makes it a little more fun."

Any change from last season will be fun for the Mustangs, who finished 6-21 overall and 1-15 in the Southwest Conference. SMU's only victory of the conference season came by a score of 67-66 over the Houston Cougars, who have been predicted to win this year's SWC crown over Arkansas, TCU and Texas A&M.

Bliss returns all five starters from last year's squad, with 6-6 forward John Addison's 12.9 points per game the highest returning scoring average. SMU's starters in 1981-82 included three freshmen, a sophomore and a junior.

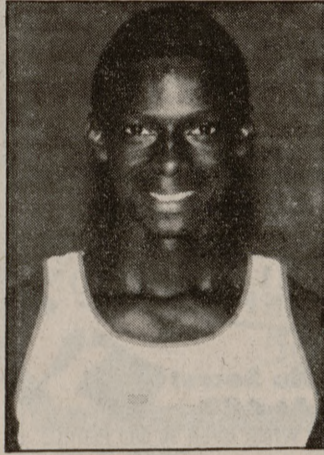
"It's kind of a Catch-22 from our standpoint, because we weren't really experienced enough to do a heck of a lot of shifting with ideas," Bliss said.



SMU's Larry Davis should be one of team's leaders



Rice coach Tommy Suits says Owls will be stronger



Guard Tyrone Washington back as starter this season

"So we played more of a patient waiting game, hoping the other team would make more mistakes than we did. A lot of times they did, but a lot of times we would still come up second in the game."

The key to the Mustangs' season lies in the fact that this year's squad contains better athletes, Bliss said.

"The major thing that I think will change with our basketball team is that because we have better athletes, therein lies the hope," he said. "That's because if you get behind and you don't have good athletes, you can't catch up. If you start the game and you don't have good athletes, you can't get ahead."

"I think that having a little better athletes now, you can go out and extend yourself a little

bit more and be more committed to winning the basketball game. If I were to summarize it, I'd say the commitment (on the team) is entirely different."

Bliss said either Koncak or sophomore redshirt Kolin Page will start at center for the Mustangs. Larry Davis, a sophomore from Lufkin, returns at power forward after averaging 11.9 points a game last season.

Our players have competed for the other forward position: junior transfer Craig Garrett, junior Chuck Anderson, sophomore Reginald Pink, who started last season, and Carl Wright, a freshman from Dallas. Wright's older brother, Rynn, played at Texas A&M through the 1980-81 season.

Bliss said senior Dave Piehler, the only senior on the squad

and one of the most accurate shooters in the school's history, and Addison are competing for the shooting guard spot. The point guard position is up for grabs between junior David Gadis and freshmen Kevin Lewis and Butch Moore.

Bliss said SMU will have a quick team this season and will utilize the full-court press and fast break more often. Depth and rebounding, he said, will be improved as well.

"I would like our team to be not so excited about the fact that we have great athletes, because we don't have the best athletic team in the league," Bliss said. "But we have good enough athletes that we can compete with those teams and still use our head."

At Rice, Tommy Suits be-

lieves the Ricky Pierce-less Owls will have a solid squad after finishing 15-15 during the past season. Pierce, who has since found a home with the NBA's Detroit Pistons, averaged 26.8 points a game for the Owls. But Suits finds optimism common among his players.

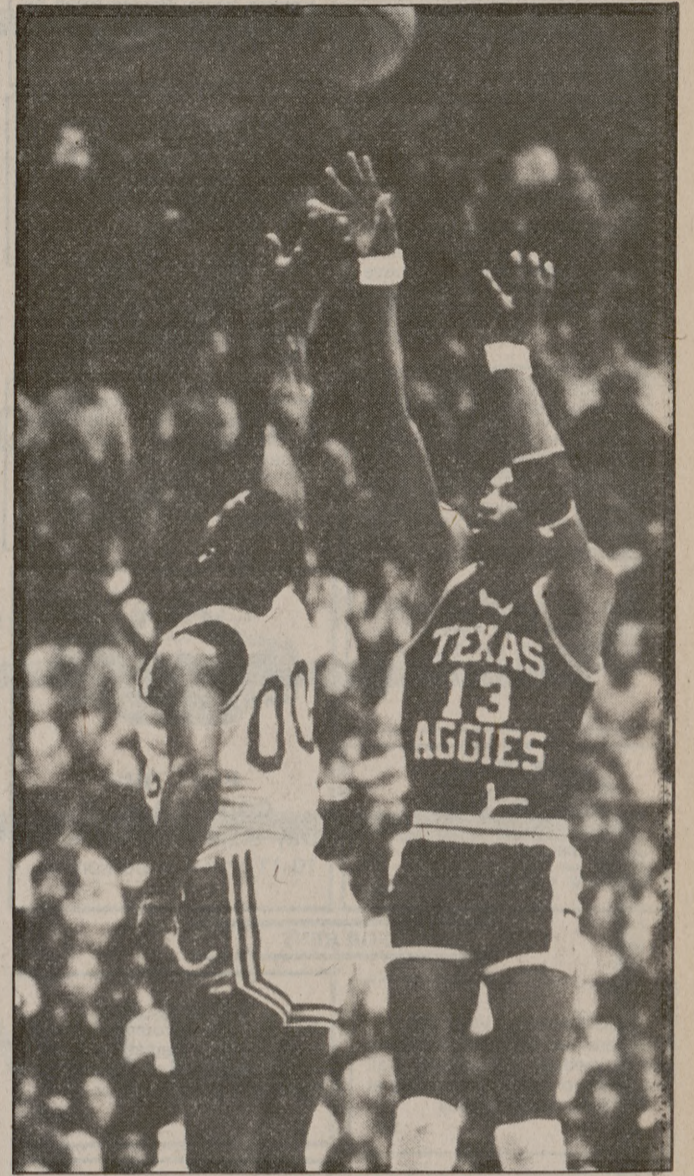
"I think that going into last year," he said, "everyone on the team felt like we'd be good and was sort of optimistic. This year, we know we can win. We beat too many good people last year for us not to win this year."

The Owls made a noisy entrance onto the college basketball scene when they defeated nationally ranked Hawaii, San Francisco and North Carolina State to win the Rainbow Classic early last season. After the Owls lost to LaSalle and Pepperdine in a previous tourney, the victories in Hawaii were an unexpected surprise for Suits.

This season, senior forward Kenny Austin will be the Owls' team leader on both offense and defense. Although Austin has always been among the team leaders in several statistical categories, he's been overshadowed by Pierce's success.

"I think Kenny Austin is one of the better players in the conference," Suits said. "Nobody appreciates how good he is because he doesn't score a lot of points."

"I think that's a shame. He's been our second-leading rebounder for three years — second only to Ricky Pierce. He's been our second-leading scorer



Rice will depend on senior center Donald Bennett (00) for scoring punch this season, as the Owls must strive for success without four-year team leader Ricky Pierce. Aggie forward Claude Riley (13), Texas A&M's senior leader this season, shoots over Bennett in an Aggie victory at Autry Court in Houston last season.

See SWC page 10

**NOTICE**  
Look for our ad in Thurs. Battalion  
Larry & Swede  
693-6030

**10 Fulltime  
15 Parttime**  
Delivery men needed. Must have car. Paid commission daily. Flexible hours. \$3.50 an hour plus 6% commission.

Apply in Person  
**Chanello's Pizza**  
301 Patricia  
**CHRISTMAS MONEY!**

**CAD'S PAINT & BODY**  
(the best little body shop in Texas)  
— FOREIGN & DOMESTIC —  
Specializing in complete  
**PAINT, BODY & FIBERGLASS**  
— Vehicle Inspections —  
(Only Female Inspector in Texas)  
**FREE ESTIMATES**  
19TH & MAIN, DOWNTOWN, BRYAN  
775-4773

**HUMBLE HOMETOWN CLUB  
FIRST MEETING  
TUESDAY, NOVEMBER 9  
7 P.M. ROOM 701 RUDDER TOWER**  
Everyone from the HUMBLE-KINGWOOD-ATASCOCITA area is invited.  
For more information call  
**CHRIS SLAVER 260-0581**

**JEFF'S PERFORMANCE CENTER**  
1801 Cavitt  
Bryan 822-4934

- Tune-Ups
- Starters
- Clutches
- General Auto Repairs
- Performance & Efficiency Mods.
- Stock & Custom Engines
- Corvette Repairs of all Types
- Hi-Performance Parts & Accessories
- All Work Fully Guaranteed
- Carb Repairs
- Alternators
- Brakes

**Lipstik**

A Vivacious, exciting, new nightclub

**Everyone Is Talking About It!  
It's finally Here!**

**Grand Opening Wednesday  
November 10 8 p.m.**

Woodstone Shopping Center  
815 Harvey Road  
College Station, Tx 77840

**AN OPEN STATEMENT  
TO  
THE STUDENTS, FACULTY AND ADMINISTRATIVE STAFF  
OF TEXAS A&M UNIVERSITY**

**FROM:** The Undersigned Christian Campus Ministers  
**REGARDING:** The "Christian Update Forum" of Probe Ministries

Since inquiries continue to be raised regarding our relationship as established Christian Campus Ministers at Texas A&M with the "Christian Update Forum," and since on occasion it is apparently at least suggested that the "Christian Update Forum" is supported by all the Christian Campus Ministers on campus, if not explicitly, at least implicitly, let it be hereby known that...

1. Most of us have never been approached directly for such support in any way, and therefore we could not lay such claim to support even if we wished to do so.
2. Since we are very unsure in what manner they intend to "reflect historic Christian perspectives," as their literature suggests they will do, we find it impossible to say that it will reflect views to which we could lend our name.
3. We recognize the right of any professor to invite guest lecturers of his/her own choosing into the classroom — and we gladly accept such invitations when extended to us — but we recognize among ourselves that, without dividing a fundamental unity in Christ, there remain diversities of views on how Christian faith relates to almost any discipline or area of life. We must, therefore, respectfully suggest that whatever views are extended through Probe Ministries may not be the same as the views that other Christian traditions may hold... just as we must, in any presentation we make, recognize that we represent one strand of a much larger Christian tradition that has been spun out over the years. We must make this statement to be sure that the views expressed are held accountable by those traditions from which the lecturers come, which may not be the same views that we would hold.
4. Since this "disclaimer" could be perceived by some to further divisions which are already too numerous in Christendom, let it be known that we who serve in the continuing Christian Campus Ministries at Texas A&M would gladly continue any discussions begun in the visit by Probe Ministries from the perspectives and viewpoints of our own traditions, not with the intention of further dividing, but rather with the intention of enriching and amplifying the Christian vision as part of the larger education that is being offered at our great university.

Michael Nelson Miller  
Campus Minister For  
United Presbyterian Church  
Presbyterian Church, U.S.  
United Church of Christ  
Christian Church (Disciples of Christ)

Hubert Beck,  
Lutheran Campus  
Ministry

J. Mark Wilburn  
Chaplain  
Episcopal Student  
Center

Leon Strieder  
Director of Campus Ministry  
St. Mary's Student Center  
(Roman Catholic)