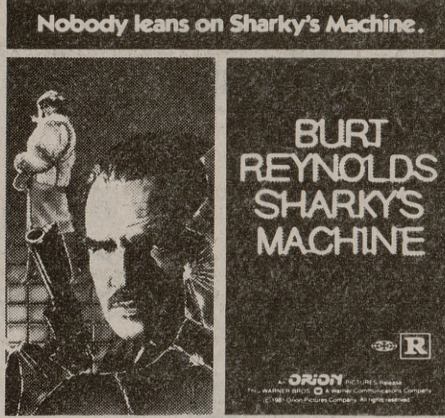
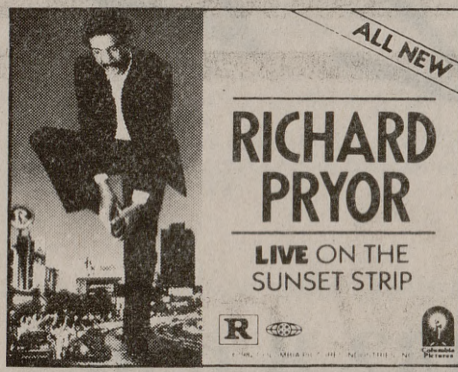


**SHORT NECKS**

**AGGIE CINEMA PRESENTS**



Friday & Saturday 8 p.m. Theatre



Friday & Saturday Midnight Theatre



Sunday 7:30 Theatre

**Antiques, Guns, Furniture, Collectables & Misc. Items.**

**First Annual Alpha Kappa Delta Flea Market/Auction**

Sambos parking lot on Texas Ave.

Nov. 7 12-6 p.m.

**AGGIE CINEMA**

**SHARKEY'S MACHINE**

Fri./Sat. 8:00 Theater

**RICHARD PRYOR LIVE ON SUNSET STRIP**

Fri./Sat. Mid. Theater

**The WICKER MAN**

Sun. 7:30 Theater

**Swados in concert: sensitive, enchanting**

by Shellee Bratton  
Battalion Reporter  
Elizabeth Swados — writer, composer, and director — enchanted a small audience Thursday night at her concert at the Rudder Forum.  
Accompanied by pianist Judith Fleisher, Swados played the guitar, sang selections from her Broadway shows, and sang the works of her favorite poets which she had set to music.  
Swados opened with a song she wrote called "A Bird's Lament" which was about a woman who was half bird — half on the ground, and half in the air. Swados explained that the song was in a language that she and a friend had made up, and that

sounds rather than words conveyed the meaning of the song. The song consisted of a variety of wordless notes in which could be heard the cooing, the flapping, the trill, and the shriek of one who might well be half bird, half woman.  
"I've sung this in Jersey, in New York, and in Israel, and nobody has any trouble understanding it," she said, "If you can get through this, the rest will be a snap."  
Swados also sang several selections from her production "Alice in Concert," and from her Broadway play "Runaways."  
One of the most striking pieces she sang was a poem called "Daddy" which she had set to

music. "Daddy," a poem by Sylvia Plath, is an anti-male diatribe which entails the hatred of a Nazi-like husband/father figure.  
Swados likened "Daddy" to a modern-day version of the myth of Medea, a woman in Greek legend who, when deserted by her lover, killed her children in a vengeful rage.  
Swados ended her performance with a sensitive selection called "The Patriotic Song," a poem by the poet Yehuda Amichai, is about the conflict in Israel and describes it with words that conjure images.

**Clements says he lost by calling wrong plays**

United Press International  
AUSTIN — Gov. Bill Clements dredged up football metaphors to explain how he must have "called the wrong plays" in losing by a surprisingly large amount to a jubilant Attorney General Mark White.  
For his part, White, who spent \$6.3 million compared to Clements' record \$11.8 million campaign, said Wednesday he had a

"gut feeling" in the last two days of the campaign that he would win with 53 percent of the vote.  
Based on complete returns, he won with 52.9 percent of the votes.  
According to White, a heavy turnout of Hispanic voters in the Rio Grande Valley was the key to his victory margin as well as a heavier than expected turnout.  
Clements was grim-faced

while making his closing speech but was more upbeat Wednesday as he likened his loss to a football game.  
"What's the phrase you use? 'We got beat at the scrimmage.' That's about as good as any," Clements said. "We're disappointed. We're not only got beat at the scrimmage but we were needed a new quarterback. I know, that in a sense, that's called the wrong play."  
When asked about his future, Clements said he planned to run for another term but added, "I'm not going to tug away."  
Clements declined to comment on his loss but said he did not think his defeat was seriously set back the fledgling Republican party in Texas.  
White said he believed his criticism of Clements' record utility rates gave him the momentum to win.  
During the closing weeks of the campaign White sat in the media with comments that the incumbent had failed to push a regulatory clause that would cost directly on to consumers.  
White also was critical of Clements' selections for the Public Utility Commission, saying householders should have named to the regulatory agency.

**COUPON**

one potato, two potato...

35¢ off any entree with salad, nachos, or ice cream, with this coupon. Good 'till November 17th.

Eat Out In CLASS

102 Church St. College Station 846-0720

Each Bite an EDUCATION in NUTRITION

All our potatoes are Ph.D.'s PURE, HEALTHY, and Nutritiously DELICIOUS

each of our ingredients is REAL and prepared FRESH each day

**COUPON**

**JESUS IS LORD**

**Sunday Services:**

Sunday School 9:45 a.m.  
Morning Worship 8:30 a.m.  
Evening Worship 11:00 a.m.  
6:30 p.m.

ALDRSGATE UNITED METHODIST CHURCH

"I'll assure you of something else," White said. "The companies in Texas are going to be very strong companies years from now but they're going to be very well-regulated companies."  
Clements said he looked forward to an "orderly and gracious" transition but added he would continue to urge gubernatorial appointments including the appointment of chief justice to the state Supreme Court to replace retired Justice Joe Greenhill.

Now you know

United Press International  
NEW YORK — Salties chlorinated water from oceans or swimming pools often cuts, scrapes and insect stings. To prevent such irritations, a petroleum jelly manufacturer suggests coating minor skin injuries with its product before going into the water.

**NOW IN STOCK: mitre THE SOCCER SPECIALISTS**

**SOCCER SHOES**

with Permanent or Replaceable Cleats (Replaceable Cleats Available)

**TRI-STATE A&M SPORTING GOODS**  
3600 Old College Road  
846-4743 846-4743

**SCHULMAN THEATRES**

2002 E. 29th  
SCHULMAN 6 775-2463  
MANOR EAST III 775-2468

2:35 - 5:00 - 7:25 - 9:40

**HALLOWEEN III SEASON OF THE WITCH**

2:45 5:00 7:25 9:40  
CHEECH AND CHONG JOHN CANDY

**CAME FROM HOLLYWOOD**

2:25 - 4:50 7:15 - 9:50 2:50 4:55 7:10 9:25  
MOTHER LODE THE SORCERESS

2:40 - 4:55 - 7:10 - 9:25 2:15 - 4:40 7:15 - 9:50  
JEKYLL & HYDE ...together again THE WORLD ACCORDING TO GARP

210 University CAMPUS 846-6512  
7:15 - 9:30 FRI-AFTER YELL. PRACTICE SAT-MIDNIGHT  
ZAPPED Summer of '72 X-Rated

Mon-FMLY NT Sch 6  
Tue-FMLY NT ME III  
Thurs-FMLY NT Campus

2:30 4:55 7:20 9:45 12:00

The ultimate in sight and sound. Now, re-recorded in new digital stereo.

Walt Disney's **FANTASIA**

WIDE SCREEN DOLBY STEREO

2:20 - 4:45 7:15 - 9:50 2:40 - 5:00 7:30 - 9:40

"It'll lift you up where you belong."

**AN OFFICER AND A GENTLEMAN**

**ROCKY III**

FRI. MIDNIGHT SHOW SAT. TAPS

2000 E. 29th SKYWAY TWIN 822-3300

WEST POLTERGIEST FORCE OF VENGEANCE  
EAST PRANKS BEYOND THIS DOOR

105 S. Main, PALACE 822-5811  
TREO DE PRESIDIO EN ESPA PRIMARERA

**PLITT THEATRES**

Senior Citizens Price \$2.00 all time Age 65 & over with ID

Post Oak Mall **CINEMA III** 1500 Harvey Road 764-0616

TONIGHT: 7:15-9:30  
SAT/SUN 12:30  
He is 3 million light years from home.

2:45-5:00  
7:15-9:30

**E.T. THE EXTRA-TERRESTRIAL**

22nd WEEK! A UNIVERSAL PICTURE PG

TONIGHT: 7:25-9:50  
SAT/SUN: 12:15-2:35  
5:00-7:25-9:50  
3rd WEEK

FRANK YABLANS Presentation  
A FRANK PERRY Film

Forgive me, Father, for I have sinned.  
CHRISTOPHER REEVE

**MONSIGNOR**

Students with school I.D. \$2.00 Friday (except midnite)  
Sat/Sun all seats \$2.00 1st 30 min. first show!!

PLITT CINEMA I & II SKAGGS CENTER  
92K Midnite Shows  
"Kentucky Fried Movie" (R)  
"Rocky Horror Picture Show" (R)  
\$2.00 12:00 Midnite

Skaggs center **CINEMA I & II** 846-6714

TONIGHT: 7:45-9:45  
SAT/SUN: 1:45-3:45-5:45

National Lampoon's "CLASS REUNION" (R)

The class of '72 returns to Lizzie Borden High - No class has less class than this class!

TONIGHT: 7:30-9:30  
SAT/SUN: 1:30-3:30  
5:30-7:30-9:30

THE COMEDY FAVORITE OF THE YEAR!  
PETER O'TOOLE  
JESSICA HARPER

**MY FAVORITE YEAR** PG