

# Battalion Classifieds — local / state

Battalion/Page 6  
October 25, 1982

## HELP WANTED

INTERURBAN EATING HOUSE is now hiring part-time DISH/BUS for the daytime. Apply in person between 2&4 p.m. 184fn

SERVICE STATION ATTENDANT, 815 Texas, College Station. 37110

DEPENDABLE MEN, WOMEN OR COUPLES for present and future Houston post routes. Early morning hours. Papers rolled by machine. \$200-\$750/month. 846-2911 846-0396 24fn

The HOUSTON CHRONICLE is currently taking applications for newspaper route carriers for summer & fall semesters. Routes take 2 1/2 to 3 hours per day, with salary from 400 to 800 per month. All routes receive a gas allowance also we need solicitors for the summer & fall semester. If interested please call Julian McMurray 693-2323. 50fn

HOUSTON POST are accepting applications for fall semester. Apply early. 846-0396, 846-2911. 160fn

## HELP WANTED

### FULL OR PART TIME

\*Day Shift  
\*Night shift (til 10 p.m.)  
\*Weekends  
\*Flexible hours to fit your schedule  
\*Rapid advancement  
\*Cashier experience helpful  
**Starting Salary \$3.65/hour**  
Apply in person only 9:30-11:30 a.m. (if possible)  
**WHATABURGER**  
Bryan College Station  
1101 Texas 105 Dominik 190fn

### COLLEGE STATION DAIRY QUEEN

2323 Texas Avenue South, now accepting applications for all positions and shifts. Some weekends, flexible hours. Apply before 3 p.m. weekdays. See Shirley Gent. 3915

## FOR SALE

Ladies 3 speed bike, 26 inch, \$75.00, 693-7617. 3715

Batteries \$21.95 + exchange guaranteed, 822-1719. 2930

78 Fiat Bertone XL9, excellent condition. Silver w/pioneer 3000 stereo, new tires, call Ricardo, 696-7732. 3645

Dodge Colt, '76, green, am/fm cassette, good condition, \$1850, 775-6001 or 779-7228. 3645

Hobie 16 \$2900, Tequila Sunrise Sails, excellent condition, many extras, 845-0348 or 775-4633. 3715

Datsun pick-up, 1977, gas saver, priced below book. Tool box, 693-5925, 696-6013, 693-2780. 3515

'72 BMW 2002, new paint, rebuilt engine, A/C, 260-4093. 357

Overseas appliances, brand new, never used. Wholesale prices. 779-6105 after 6 p.m. 3115

## OFFICIAL NOTICE

**DIRECTORY REFUND POLICY**  
Directory Fees are refundable in full during the semester in which payment is made. Thereafter no refunds will be made on cancelled orders. Yearbooks must be picked up during the academic year in which they are published. 8167

**AGGIELAND REFUND POLICY**  
Yearbook fees are refundable in full during the semester in which payment is made. Thereafter no refunds will be made on cancelled orders. Yearbooks must be picked up during the academic year in which they are published. \*Students who will not be on campus when the yearbooks are published, usually in September, must pay a mailing and handling fee. Yearbooks will not be held, nor will they be mailed without the necessary fees having been paid. 8167

## SPECIAL NOTICE

DON'T FORGET to go by Yearbook Associate (On Puryear behind Calpepper Plaza) to have your AggieLand '83 picture taken. 2311

Las Vegas Timeshare 1 week per week 26 years sleeps 4 exchange privileges. Phone 779-6423 after 5:30 p.m. 3815

**PLAN AHEAD FOR IM SWIMMING**  
Preliminaries for Corps and Fish on Monday, October 25 at 7 p.m. Entries taken at P.L. Downs Pool until 7 p.m. Preliminaries for Men's and Women's Independent and Dorn on Tuesday, October 26 at 7 p.m. Entries taken at P.L. Downs Pool until 7 p.m. For further information contact IM-REC Sports Office, 159 E. Kyle, 845-7826. 3615

**BRAZOS VALLEY GOLF DRIVING RANGE**  
Hrs: Mon-Sat 3-9 p.m. Sunday 1 p.m.-8 p.m.  
696-1220  
East Bypass and Hwy. 30.  
Service Road Going South - 1/4 miles. 8120

**SERVICES**  
Typing experienced, fast, accurate, all kinds, 822-0544, 846-9707. 184fn  
TYPING, All kinds, 846-0132. 2818  
Typing on word processing equipment. Experienced. We understand form and style. Automated Clerical Services, 693-1070. 1438  
Mary Kay complimentary facial. Diane McCleary, 693-0104. 2717  
TYPING, 823-7723. 31126

Service For All Chrysler Corp. Cars Body Work — Painting  
**HALSELL MOTOR COMPANY INC.**  
Dodge Sales and Service Since 1922  
411 Texas Ave. 823-8111 11fn

Qualified journalism tutor now accepting students needing help. Call 846-2510. 3515  
\*Problem Pregnancy? Free pregnancy testing and referrals. (713) 524-0548. 188fn  
Call Sue for all your typing or word processing needs. 696-9550. 131fn  
Karen's typing service, 775-6126. 7137  
TYPING/WORD PROCESSING. Reasonable rates. Call SLS Transcription Services, 260-9137. 1758  
For the Cadillac in typing, Word Processing is it. Check our prices AND our quality. 775-3523.  
TYPING, 823-4579. 2539  
Gay/Lesbian line 846-5022. 1628  
TYPING, 775-7017. 1921  
Typing!! Reports, dissertations, etc. ON THE DOUBLE. 331 University. 846-3755. 178fn

Horse stables and pasture available, 693-4098 evenings, 845-8161 daily. 3915

Technics Turntable, direct-drive, manual, new cartridge, \$85., 846-5520. 3714

Problem Pregnancy? Free pregnancy testing and referrals. (713) 524-0548. 188fn

Call Sue for all your typing or word processing needs. 696-9550. 131fn

Karen's typing service, 775-6126. 7137

TYPING/WORD PROCESSING. Reasonable rates. Call SLS Transcription Services, 260-9137. 1758

For the Cadillac in typing, Word Processing is it. Check our prices AND our quality. 775-3523.

TYPING, 823-4579. 2539

Gay/Lesbian line 846-5022. 1628

TYPING, 775-7017. 1921

Typing!! Reports, dissertations, etc. ON THE DOUBLE. 331 University. 846-3755. 178fn

# Miniature factory provides experience in automation

by Myra Retta  
Battalion Reporter  
Texas A&M's Industrial Automation Laboratory's scaled-down version of an automated factory provides students with an opportunity to look at a broad range of problems in manufacturing.

The automation laboratory is examining new technology to determine how it best can be used, Dr. Robert E. Young, director of the laboratory, said. In addition to research, the laboratory is used to train students to develop the tools to design and build manufacturing systems.

"Students then transfer the new technology from the classroom to the jobs they enter," Young said. "This is referred to as performing technology transfer."

The laboratory mainly is used to take a macro, or overall, look at the manufacturing equipment, he said. "This means taking all of the pieces of equipment and arranging them so that we can get the most production out of the least amount of equipment, people and space," Young said.

An automated factory to research the manufacturing systems would require large equipment and warehousing, he said, which would cost the University millions of dollars. So instead of

a full-scale model, the industrial automation laboratory has constructed a scaled-down automated factory.

The miniature model provides tremendous capability for looking at a broad range of problems in automated manufacturing at an acceptable cost, Young said.

The automated factory, though in module form, is fully functional.

"We have captured the properties of the large systems that are critical to the correct interaction between the individual items within the system," he said.

The computers are the same as those used in full-size factories. They don't realize the factory is scaled-down," he said. All the responses, control signals and computer programs are the same as in full-size systems.

The factory was built from mechanical bread-board kits, which are similar to Erector sets.

"They have gears and components we can build from without

having to go into the mechanical shop and make them from scratch," Young said.

The goal of the lab, he said, is to have an automated factory to have an automated factory. To achieve this goal, Young said, the long-range goals have been split into immediate objectives and assigned to students as projects.

The scaled-down factory is the best way to train students, he said.

"The students encounter the same type of computer problems as in industry, yet mistakes can be made here without the risk of destroying \$1 million worth of equipment," he said.

"They don't face the risk of losing a job or life either," Young said. The lab is given attention from industry and other universities.

"Right now this is the advanced laboratory in this country," he said. "We have a lot of visitors from other countries in this country and around the world who are interested in building similar facilities."

"They have gears and components we can build from without

## SHRIMPARAMA

MONDAY AND TUESDAY NIGHT

\$5.95

FRIED SHRIMP

OUR REGULAR \$7.95

Platter with all the trimmings

AGGIE OWNED AND OPERATED CLASS '60



HILL SEAFOOD RESTAURANT

EAST 29th AT CARTER CREEK

## MSC Camera Committee FALL PHOTO CONTEST

- Entries open Nov. 1, 82 and close Nov. 5, 82 at 4 p.m. in the MSC Lobby. Cost is \$2.00 per print.
- Prints will be judged Sat. Nov. 6, 82.
- For more info call Bruce 260-1958.

# COLLEGE REPUBLICANS

— Election Day Activities will be discussed.

— Those interested in Poll watching should attend.

Tues. Oct. 26, 7:30 p.m.  
502 Rudder

## NOW HIRING



DELIVERY PEOPLE NEEDED FLEXIBLE HOURS

\$3.75/hr. plus 6% commission plus tips merit raise after 2 weeks up to \$4.50/hr.

Apply between 3:30 and 7 M-F

319 Patricia or 2314 S. Texas

(across from the Dairy Queen) 3915

## FOR RENT

Attractive 2 bedroom 2 bath duplex. Kitchen appliances and drapes furnished new washer/dryer can be furnished upon request. Near TAMU and shopping centers, \$425/mo., 693-0982, 696-7714. 291fn

Sub-lease one bedroom, walking distance from campus, 693-4098 evening, 845-8161 daily. 3915

**MINI WAREHOUSES**  
101 Jersey West (corner of Jersey & Wellborn across from Olsen field)  
**THE STORAGE CENTER**  
696-4203  
(Office at 512 West Loop) 391fn

**SOUTHWEST VILLAGE**  
One and two bedrooms available for immediate occupancy. Call 693-0804 or come by the office at 1101 Southwest Parkway. 291fn

**RENT SLASHED**  
Spacious two bedroom 1 1/2 bath four-plex with washer and dryer, close to campus. Large kitchen, walk-in closets, large deck in rear. 693-8685. 30fn

**DUPLEXES AND HOUSES**  
2 & 3 bedroom in Bryan/CS. Kitchen appliances, W/D connection, carpet, drapes, fenced yard.  
**JOE COURTNEY, INC.**  
696-4203  
(Office at 512 West Loop) 361fn

**ROOMMATE WANTED**  
Roommate needed. Call 823-5213, after 1:00 p.m. 3915

**FOR SALE**

1982 Chevette, excellent condition; automatic, air, 4-door hatchback, call Ron, 1-836-4571 (day) or 1-836-9004 (night). 3812

'75 Suzuki TS185, good condition, \$650, 846-5469. 3915

**PIONEER SX-780 receiver 55 watts \$200. Sony TC-K55 tape deck \$200. Pioneer turntable with cartridge \$150, excellent condition, 696-2475. 3815**

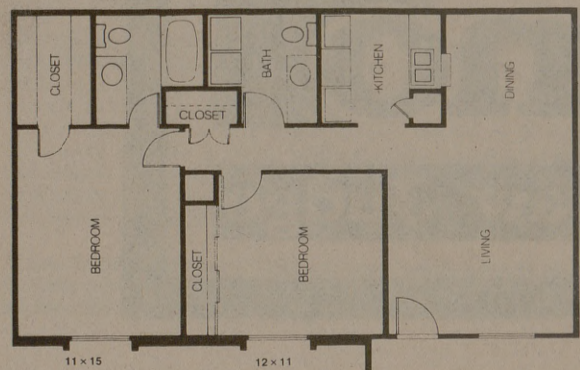
Horse stables and pasture available, 693-4098 evenings, 845-8161 daily. 3915

Technics Turntable, direct-drive, manual, new cartridge, \$85., 846-5520. 3714

## COURTYARD APARTMENTS

Are you looking for an apartment? We have nice large clean freshly painted apartments. On the shuttle bus route and close to campus. Semester leases available. Call 693-2772 or come by 600 University Oaks. Open 8:00 a.m. to 6:30 p.m. Monday through Friday and 9:00 a.m. to 4:00 p.m. Saturday. 37125

## SMOOTH MOVE!



## Parkway APARTMENTS

2 bedroom, 1 1/2 bath, shuttle bus, laundry facilities, security guard. 1600 Southwest Parkway, 693-6540. 341fn

## T.S.O.

Prescriptions Filled Glasses Repaired

BRYAN

216 N. Main ..... 799-2786

Mon.-Fri. 8-5 Sat. 8-1

COLLEGE STATION

8008 Post Oak Mall .. 764-0010

Mon.-Sat. 10-9 p.m.

TEXAS STATE OPTICAL

Since 1935.

**SERVICES**

WORD PROCESSING—papers, reports, dissertations, etc.—Fast, accurate, reasonable, 846-6200. 29115

**MISC.**

BELLYDANCING FOR ANY OCCASION, 696-1250. 1230

**PERSONALS**

"GCS loves B-CS." 2730

**SEXY, SUAVE, INTELLIGENT, RICH**  
If you're a female who seeks these qualities in a male, call 693-8563. Ask for Matt C. 3911

**WANTED**

**CASH FOR OLD GOLD**  
Class rings, wedding rings, worn out gold jewelry, coins, etc.  
**The Diamond Room**  
Town & Country Shopping Center  
3731 E. 29th St., Bryan  
846-4708 11fn