

FOR RENT

SUPER SAVINGS



SouthWest Village Apartments

We Feature:

- Full Time Security Guard on Premises At All Times
- Interior Green Space with Creeks & Trees
- 4 Distinctive Styles of Apts.
- Shuttle Bus Service
- Quiet & Serene
- Pets & Kids Okay
- Swimming Pool
- Tennis Courts
- Club Room
- Sauna
- Jacuzzi
- Playground
- Picnic Tables
- Barbecue Pits

Call or Come By & Ask About Our **FAMILY SPECIAL**

BEST ATMOSPHERE IN TOWN LIKE LIVING IN A PARK

Office Open 7 Days a Week
1101 Southwest Parkway
College Station, Texas 77840
(713) 693-0804

10115



NOW LEASING FOR FALL & SPRING

- Pool
- Jacuzzi
- Game room
- Shuttle Bus
- Cable TV
- Security Guard
- Large Party Room
- Volley Ball Court
- Basket Ball Courts

Catty Cornered to Oaks Park with
- Picnic Area
- Trees & Gazebo
Call Soon - Only A Few Leases Left
700 Dominik, College Station, Texas
(713) 693-0261

1721n

OFFICIAL NOTICE

DIRECTORY REFUND POLICY
Directory Fees are refundable in full during the semester in which payment is made. Thereafter no refunds will be made on cancelled orders. Directories must be picked up during the academic year in which they are published.

8167

SPECIAL NOTICE

DON'T FORGET to go by Yearbook Associates (On Puryear behind Culpepper Plaza) to have your Aggeland '83 picture taken. 23111

Gurdjieff group forming. For information call 693-4647 after 5. 2315

Now you know

United Press International
Although arthritis affects 31 million Americans, making it the nation's most prevalent chronic affliction, doctors still don't know what causes it. "Its origins may be bacterial, viral, genetic, stress related or emotional or physical shock," says Donald Walz, a developer of anti-arthritis drugs for Smith Kline Beckman Corp.

Today, most researchers support the theory that as rheumatoid arthritis progresses, the body's immunologic system goes awry, actually turning against the organism it is supposed to protect.

Almost any joint can become arthritic. Rheumatoid arthritis, often chronic is inflammatory, with swelling occurring in the soft tissues that line the joint. Osteoarthritis, a wear and tear disease, is signaled by degeneration of bone and cartilage.

There is no known cure for most forms of arthritis, so doctors try to relieve the pain and swelling. The most frequently prescribed drug is aspirin, but large doses often create other problems like stomach ulcers.

Warped



by Scott McCullar

Games prepare for WWII

Maneuvers not for fun

United Press International
WERTHEIM, West Germany — This year's NATO maneuvers — Western civilization's annual military ritual — were more than just harmless wargames.

For one thing, the series of exercises — each with a mysterious code name and practicing everything from shipping heavy combat equipment to dropping paratroopers across the Atlantic

— came against a backdrop of stress within the alliance and rising political discontent in Europe.

For another, there was wear and tear on the military and civilian populace: Preliminary tallies placed the toll at 16 dead and more than 100 injured, with damages — held down by good weather — running over \$1 million a day.

"We have always had difficul-

ty within the alliance: This is natural with 16 nations," said NATO Secretary General Joseph Lunds, a wry veteran of decades in Dutch politics.

"There has been an erosion of public support for the utility of the alliance. The governments, as distinct from public opinion, are behind it."

The object was to practice for World War III—a Warsaw Pact invasion along the south shore of the Baltic, through central Europe and along the north shore of the Mediterranean.

The exercises presented the Warsaw Pact strategically with an acknowledged picture of cohesion and solidarity, but for dog soldiers on the ground, the wargames were a series of grinding minute-to-minute hassles and bewildering daily changes.

"I'm getting too old for this," said one U.S. Marine, exhausted after an all-night landing in Denmark. "I'll be 20 next week."

The wargame preparations began in April, with staffs in the Pentagon and major U.S. and European commands putting together organization charts, timetables, tonnage estimates, and shipping and flight schedules, in an effort to mesh the resources of armies, navies and air forces from 16 nations.

Maneuvers actually began in August, with U.S. and Canadian naval forces practicing convoys, minesweeping and surface engagements in the North Atlantic.

While that was going on, exercise REFORGER (Return of Forces to Germany) moved 19,000 troops and their equipment by air and sea to Belgium and the Netherlands, then moved on toward battlefields across Europe.

That load fell mostly on SHAPE, Supreme Headquarters Allied Powers Europe, a quiet post nestled in the wooded hills of southern Belgium.

"We have to receive the people and put them on their way to Germany," said Warrant Officer Paul Underwood of Pampas, Texas.

"This year we're trying to build the combat environment into it. We feed them combat meals, and have them bivouac instead of putting them up in hotels."

As with all military movements, REFORGER trained troops from Texas and Kansas in the crucial but taxing ability to cope with short stretches of frenetic activity punctuated longer periods of complete inertia.

In short, they learned the military maxium: Hurry Up and Wait.

FOR RENT

NEW MINI WAREHOUSES

5x5 —	\$25 mo.
5x7 —	\$30 mo.
5x10 —	\$32 mo.
5x12 —	\$35 mo.
10x10 —	\$45 mo.
10x15 —	\$55 mo.
10x20 —	\$62 mo.
10x25 —	\$68 mo.
10x30 —	\$80 mo.

THE STORAGE CENTER
3007 Longmire College Station
(across from Ponderosa Motel)
764-8238 or 696-4203 151n

GLENWOOD APARTMENT

1 bedroom 1 bath, unfurnished. All utilities paid except electricity. No pets, hot tub & laundry. Call 779-3220. 19110

SPECIAL NOTICE

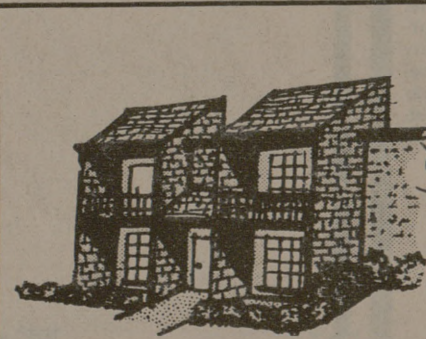
BRAZOS VALLEY GOLF DRIVING RANGE

Hrs: Mon-Sat 3-9 p.m.
Sunday 1 p.m.-8 p.m.
696-1220
East Bypass and Hwy. 30.
Service Road Going South - 1/4 miles. 8120

OFFICIAL NOTICE

AGGELAND REFUND POLICY
Yearbook fees are refundable in full during the semester in which payment is made. Thereafter no refunds will be made on cancelled orders. Yearbooks must be picked up during the academic year in which they are published.
"Students who will not be on campus when the yearbooks are published, usually in September, must pay a mailing and handling fee. Yearbooks will not be held, nor will they be mailed without the necessary fees having been paid." 8167

FOR LEASE



Parkway APARTMENTS

1, 2 & 3 bedrooms, 2 swimming pools, shuttle bus, laundry facilities, security guard. 1600 Southwest Parkway, 693-6540. 1881n

Short Necks?

BF Goodrich

T/A HIGH TECH RADIALS

BRAZOS TIRE SERVICE

AN AGGIE OWNED BUSINESS SINCE 1952
J. N. HOLMGREEN CLASS OF '44 R. J. HOLMGREEN CLASS OF '47
MIKE A. HOLMGREEN-MANAGER-CLASS OF '77

2707 TEXAS AVE.
823-0551

BRYAN
822-1425

Seniors! Looking For A Career?

Register with the Career Placement Registry
The National Computerized Employment Searching Service

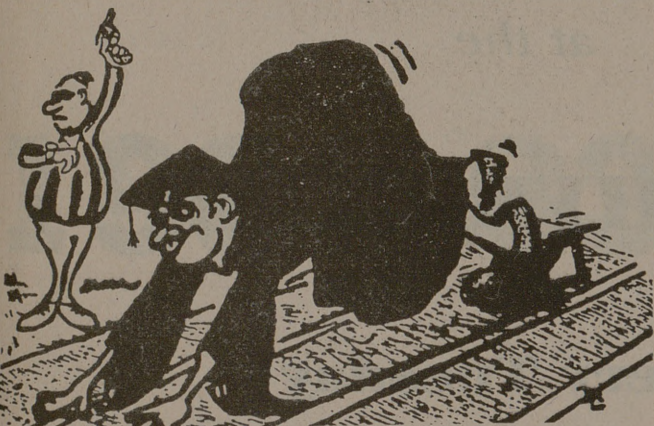
Your qualifications will be instantly available to over 8000 employers. Total cost \$8. No other fees charged. Over 5000 seniors already registered. It costs nothing to find out more about CPR. Just complete and return the coupon.

For Faster Action Call Toll-Free 1-800-368-3093 In Virginia (703) 683-1085

CPR Career Placement Registry, Inc. 302 Swann Avenue Alexandria, Virginia 22301

Name _____
Address _____
City _____
State _____ Zip _____

ATTENTION DECEMBER GRADUATES OF TAMU



ON YOUR MARK, GET SET, GO-ORDER YOUR GRADUATION ANNOUNCEMENTS

ROOM 217, MSC 8:00 AM - 4:00 PM
MSC STUDENT FINANCE CENTER
MONDAY — FRIDAY
Begin Sept. 1, 1982 — LAST DAY, Sept. 30, 1982

OFFICIAL NOTICE COLLEGE OF SCIENCE

ENGLISH PROFICIENCY EXAMINATION ALL JUNIORS and SENIORS

In curricula of the College of Science who have not previously taken the English Proficiency Exam must take the EPE as scheduled below:

- BIOLOGY Departmental Curricula**
Tuesday, September 28
7:00 to 9:00 p.m., Rm. 102 A&A Bldg.
- CHEMISTRY Department Curricula**
Monday, October 4
7:00 to 9:00 p.m., Rm. 102 A&A Bldg.
- MATHEMATICS Department Curricula**
Monday, October 4
7:00 to 9:00 p.m., Rm. 102 A&A Bldg.
- PHYSICS Department Curricula**
Tuesday, September 28
7:00 to 9:00 p.m., Rm. 146 Physics Bldg.

In order to qualify as a candidate for a degree in the College of Science, each student must demonstrate an ability to express himself/herself in acceptable English. This requirement may be satisfied by (1) passing an examination in English composition (EPE) taken not later than the spring semester of the junior year, or (2) completing English 301 at Texas A&M University with a minimum grade of "C".

Any student who fails the written examination (EPE) must satisfy the English Proficiency requirement designated by his/her respective department.
For more information and guidelines on the nature of the examination, check with the departmental advisor. BIOLOGY, CHEMISTRY, AND MATH majors MUST REGISTER IN ADVANCE with departmental advisor. 10115