

HELP WANTED

KAMU-TV FM
Is seeking two radio and TV reporters. Students expected to work 20 hours per week. Would serve as Reporters/Photographers in Bryan/College Station. Preference will be given to applicants with experience in Broadcasting news or in print Journalism, as well as those experienced shooting video tape. Also taking applications for Sports Reporter/Cameraman. Fill out applications at KAMU on Houston Street. 1511n

INTERURBAN EATING HOUSE is now hiring full and part-time kitchen help. Apply in person at 505 University Dr. between 2:00-4:00 p.m. 96fn

CONSCIENTIOUS CLEANERS with transportation, phone & job references, start at \$3.75 per hour, travel compensation, paid vacations & flexible hours at HOME CARE SERVICES, 846-7750. 178fn

HOUSTON POST are accepting applications for fall semester. Apply early. 846-0396, 846-2911. 160fn

Need employment? Apply at **CENARE** Italian Cuisine, 404 University. 4th

Part-time maintenance man for apartments and houses. Must have transportation & own tools. Experienced necessary. Flexible times. Approximately 20 hours weekly. Call Jacob-Beal Realty, 775-9000 ask for Terri. 9610

Part-time help needed, evenings. Typing required. Apply **STEPHENSON CHIROPRACTIC CENTER**, 1313 Briarcrest-Cedar Creek Plaza, Bryan. 13fn

Seeking couple or single person for nursery position Sunday evenings from 5-7:30 Westminster Presbyterian Church. Call 775-7142. 115

OFFICE & SALES

- Part-Time
 - Demo Baldwin
 - Light Office Work
- Keyboard For Appointment
CENTER 764-0006
LIB INC.
POST OFFICE BOX 1311n

Phone sales — Need 6 people to sell AAA memberships 5-9 p.m. M-Thur. Will train. Call 775-6461 or 775-9460. Ask for Ramona. 1311n

FULL OR PART TIME

*Day Shift
*Night shift (til 10 p.m.)
*Weekends
*Flexible hours to fit your schedule
*Rapid advancement
*Cashier experience helpful

Starting Salary \$3.65/hour
Apply in person only.
9:30-11:30 a.m. (if possible)

WHATBURGER
Bryan College Station
1101 Texas 105 Dominik 190fn

DEPENDABLE MEN, WOMEN OR COUPLES for present and future Houston post routes. Early morning hours. Papers rolled by machine. \$200-\$750/month. 846-2911 846-0396 24fn

HELP WANTED

Experienced **GRILLCOOKS, WAITRESSES & DISHWASHERS.**
Apply in person
SAMBO'S
1045 Texas Ave., C.S. 190fn

FOR SALE

1977 Oldsmobile Omega, new tires, muffler and paint job. Must sell. Call 260-4376 after 7 p.m. 1315

Must sell 1981 Maroon and White Grand Prix. Completely loaded. Low mileage. Excellent condition. \$7900, 779-9052. 1315

'82 Ford Exp. 2 door hatchback, excellent gas mileage, \$6000, 775-3562. 9610

4-drawer full suspension Cole steel file cabinet-\$65. Refrigerator-works but tends to run too cold-\$40. Vicki 846-5701, 696-0975. 1615

'80 Rabbit, loaded. Good condition, 693-0537. 1410

Kustom Lead HISC guitar amplifier. New condition. \$350, Tom, 779-3924. 1413

1978 Kawasaki KE100, 4300 miles, good condition. Call 845-2104 6-10 p.m., 846-6462 weekends, \$440, willing to negotiate. 1117

Sunbeam Alpine 1966, partially restored, good running condition, excellent classic potential. 696-6896, evenings and weekends. 1215

STEREO SPEAKERS-FISHER ST-430, \$185. 5000 BTU Window A/C. \$90. Plastic motorcycle fairing, \$65. 260-0545 evenings. 1513

1980 Mazda RX-7 GS, air allys, 5-speed, sunroof, \$7,300, 846-8663. 1515

Compact stereo with speakers, \$350.00. Call 696-0244 after 5 p.m. 1314

Senior ticket book, last 5 games. \$35, 779-6211. 1612

'41 Plymouth all original, runs great, \$2600, 779-2698. 1613

Air conditioner Kenmore year warranty, like new, EER, 9.6, call Franco 693-3427. 1515

1978 Toyota, excellent condition, new tires, battery, AM/FM, B.O., 775-0412. 1515

FOR RENT

CLOSE TO CAMPUS
Spacious 2 bedroom 1 1/2 bath 4-plex with washer/dryer. Popular floor plan w/large kitchen, appliances, drapes, walk-in closets, linen closets, large rear deck. 710 Wellesly Court, 693-8685. 20fn

FOR RENT

NEW MINI WAREHOUSES

5x5 —	\$25 mo.
5x7 —	\$30 mo.
5x10 —	\$32 mo.
5x12 —	\$35 mo.
10x10 —	\$45 mo.
10x15 —	\$55 mo.
10x20 —	\$62 mo.
10x25 —	\$68 mo.
10x30 —	\$80 mo.

THE STORAGE CENTER
3007 Longmire College Station
764-8238 or
696-4203 15fn

WANTED

CASH FOR OLD GOLD

Class rings, wedding rings, worn out gold jewelry, coins, etc.
The Diamond Room
Town & Country Shopping Center
3731 E. 29th St., Bryan
846-4708 11fn

SERVICES

Call Sue for all your typing or word processing needs. 696-9550. 131fn

Typing services—Fast, accurate, reliable. Will take rush jobs. 693-6411. 7610

Typing on word processing equipment. Experienced. We understand form and style. Automated Clerical Services, 693-1070. 1413n

Karen's typing service, 775-6126. 7637

Typing, SYMBOLS, 823-7723. 9621

SERVICES

Call Cathy for all your typing or word processing needs. 696-9550. 131fn

Service For All
Chrysler Corp. Cars
Body Work — Painting
HALSELL MOTOR COMPANY INC.
Dodge Sales and Service Since 1922
1411 Texas Ave. 823-8111 11fn

First Presbyterian Child Care Center.

We now have openings in our three year and four year old classes. Center hours 7:30 a.m.-5:30 p.m. Monday-Friday. Parents, quality childcare is an investment in your child's future, 779-6358. 1415

SPECIAL NOTICE

GOLFERS
Participate in the IM-REC Sports LONG DRIVING CONTEST. Wednesday, September 22 at 5 p.m. Driving range next to Polo Field. Entries accepted at the event until 5 p.m. 1512

PERFORMERS: Be in the Right Place at the Right Time! Students win cash, scholarships, auditions by major companies, a tour of Europe or the Orient. Enter A.C.T.S., Box 3ACT, NMSU, Las Cruces, NM 88003, (505) 646-4413. 161

JOB OPPORTUNITIES

dial • a • job

For employment information at Texas A&M University dial 845-4444 24 hours a day. Equal Employment Opportunity Through Affirmative Action.

Texas A&M University 1811fn

MISC.

BELLYDANCING FOR ANY OCCASION, 696-1250. 12130

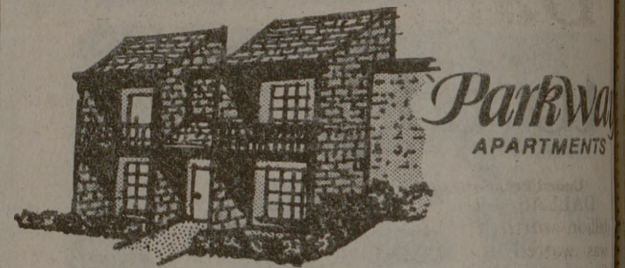
SPECIAL NOTICE

BRAZOS VALLEY GOLF DRIVING RANGE

Hrs: Mon-Sat 3-9 p.m.
Sunday 1 p.m.-8 p.m.

696-1220
East Bypass and Hwy. 30.
Service Road Going South - 1/4 miles. 8120

FOR LEASE



Parkway APARTMENTS

1, 2 & 3 bedrooms, 2 swimming pools, shuttle bus, laundry facilities, security guard. 1600 Southwest Parkway, 693-6540.

OFFICIAL NOTICE

DIRECTORY REFUND POLICY
Directory Fees are refundable in full during the semester in which payment is made. Thereafter no refunds will be made on cancelled orders. Directories must be picked up during the academic year in which they are published. 8167

AGGIELAND REFUND POLICY
Yearbook fees are refundable in full during the semester in which payment is made. Thereafter no refunds will be made on cancelled orders. Yearbooks must be picked up during the academic year in which they are published. *Students who will not be on campus when the yearbooks are published, usually in September, must pay a mailing and handling fee. Yearbooks will not be held, nor will they be mailed without the necessary fees having been paid. 8167

1 Bedroom apt. \$350.00, 3 beds Campus. Water and Cable paid. 2173.

LOST

Key ring with approx. 9 keys and Toyota key, 696-1498.

ROOMMATE WANTED

Male roommate wanted to share a 2 room apt. on shuttle bus route, \$120 plus 1/3 bills, 696-7976.

PERSONALS

*Problem Pregnancy? Free pregnancy testing and referrals. (713) 524-6545.

BATTALION ADVERTISING

Call 845-2611

OFFICIAL NOTICE COLLEGE OF SCIENCE ENGLISH PROFICIENCY EXAMINATION ALL JUNIORS and SENIORS

in curricula of the College of Science who have not previously taken the English Proficiency Exam must take the EPE as scheduled below:

BIOLOGY Departmental Curricula
Tuesday, September 28
7:00 to 9:00 p.m., Rm. 102 A&A Bldg.

CHEMISTRY Department Curricula
Monday, October 4
7:00 to 9:00 p.m., Rm. 102 A&A Bldg.

MATHEMATICS Department Curricula
Monday, October 4
7:00 to 9:00 p.m., Rm. 102 A&A Bldg.

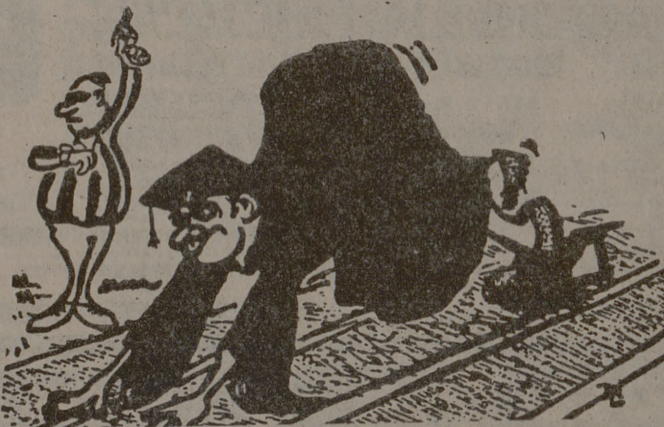
PHYSICS Department Curricula
Tuesday, September 28
7:00 to 9:00 p.m., Rm. 146 Physics Bldg.

In order to qualify as a candidate for a degree in the College of Science, each student must demonstrate an ability to express himself/herself in acceptable English. This requirement may be satisfied by (1) passing an examination in English composition (EPE) taken not later than the spring semester of the junior year, or (2) completing English 301 at Texas A&M University with a minimum grade of "C".

Any student who fails the written examination (EPE) must satisfy the English Proficiency requirement designated by his/her respective department.

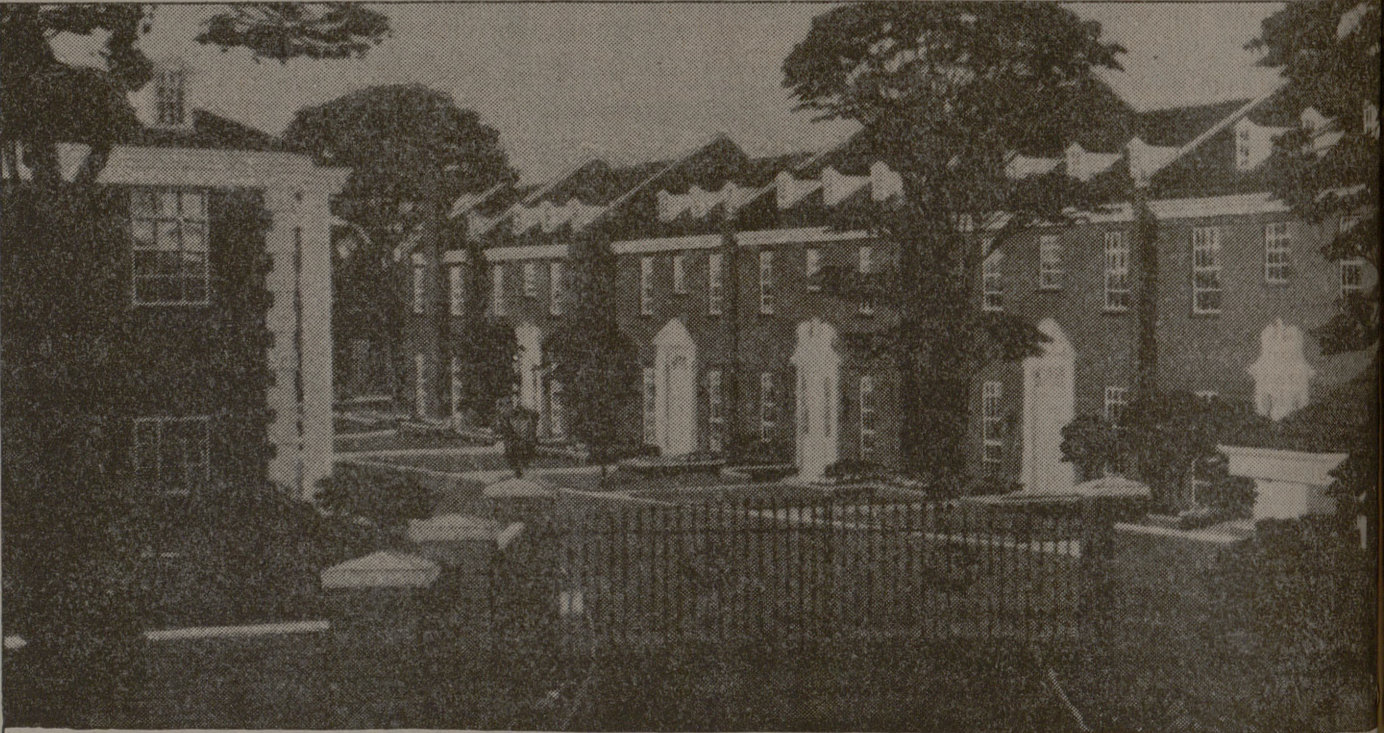
For more information and guidelines on the nature of the examination, check with the departmental advisor. BIOLOGY, CHEMISTRY, AND MATH majors MUST REGISTER IN ADVANCE with departmental advisor. 1261

ATTENTION DECEMBER GRADUATES OF TAMU



ON YOUR MARK, GET SET, GO-ORDER YOUR GRADUATION ANNOUNCEMENTS
ROOM 217, MSC 8:00 AM - 4:00 PM
MSC STUDENT FINANCE CENTER
MONDAY — FRIDAY
Begin Sept. 1, 1982 — LAST DAY, Sept. 30, 1982

New Homes



Safe, comfortable, custom townhomes. Chadwick on Carter Creek.

Chadwick on Carter Creek. The address holds the promise of prestigious living in the English tradition. Serene. Secure. Special. The townhomes of Chadwick fulfill the promise. Rich in detail and design, Chadwick gives unique definition to life. Each townhome has the distinctive features of a custom home. And from start to finish, the quality of Chadwick highlights beautiful living.

Drive by Chadwick on Carter Creek. Or call Lisa Haensch Hicks, 696-1750. Chadwick could be your address.

From \$152,900.



Chadwick
ON CARTER CREEK

A Carter Creek Parkway, Inc. Development

Chadwick cabinetry from Mutschler, the cabinetry craftsmen.

MUTSCHLER
A Triangle Pacific Company

SUPER SAVINGS



We Feature:

- Full Time Security Guard on Premises At All Times
- Interior Green Space with Creeks & Trees
- 4 Distinctive Styles of Apts.
- Shuttle Bus Service
- Quiet & Serene
- Pets & Kids Okay
- Swimming Pool
- Tennis Courts
- Club Room
- Sauna
- Jacuzzi
- Playground
- Picnic Tables
- Barbecue Pits

Call or Come By & Ask About Our **FAMILY SPECIAL**

BEST ATMOSPHERE IN TOWN LIKE LIVING IN A PARK

Office Open 7 Days a Week
1101 Southwest Parkway
College Station, Texas 77840
(713) 693-0804 1015

SERVICES

Guitar lessons. Classical, Folk, Rock, Tom, 779-3924. 1413

Gay/Lesbian line 846-8022. 16225

Typing experienced, fast, accurate, all kinds, 822-0544, 846-9707. 184fn

WORD PROCESSING-Papers, reports, dissertations, etc.—Fast, accurate, reasonable. 846-6200. 9615

Typing Reports, dissertations, etc. ON THE DOUBLE. 331 University. 846-3755. 178fn

PROFESSIONAL TYPING. Dissertations, Theses, Term Papers, Resumes, Etc. Call Dianne, 846-0132. 19924

Typing reports, dissertations, resumes, etc. Executive Services, 121 Walton At Texas Ave., 696-3785. 815

WANTED

A three or four bedroom house (preferably furnished and near campus) needed from 1 November 1982 until 15 May 1983 for a visiting chemistry professor from Denmark. Call 845-3436 or 846-1466. 1465

FLAG FOOTBALL TEAMS WANTED!

We are accepting a limited number of entries. Contact IM-REC Sports, 159 E. Kyle. 1514