

etc.

DWI

(continued from page 1)

First offenders are normally charged with a misdemeanor. They appear before the county court at law and face a maximum sentence of two years in the county jail. Repeat offenders may have to face the Texas Department of Corrections, which could sentence them to a maximum of five years, Beto said.

And despite "being in the booze business," bar owner Ganter said he strongly supports the anti-DWI campaign — and said

other bar owners might use "Drive Sober" bumper stickers.

"None of us are for anybody driving around inebriated," Ganter said. "It's not been uncommon for me to take somebody home when they're completely gone, and they don't have any friends to take them home."

However, Ganter said, "completely gone" people aren't generally a problem at his two establishments.

"By and large, at least on weekdays, we don't have a lot of trouble," he said. "And when we do, the troublemaker is generally not a student."

Ganter added that all drinking establishments were bound by law not to serve alcohol to patrons considered drunk.

"It might make some of them mad, but we'd rather have that than see them get in a wreck."

Highway 30

(continued from page 1)

Before the mall was approved, the city and state were presented in 1980 with a "College Station Mall Traffic Study" from Miller-Watt-Estes Consulting Engineers. In the report, the following improvements were assumed to be made before the mall was complete:

- Highway 30 would be widened from Texas Avenue to the Highway 6 interchange.

- Overpasses would be built on the Highway 6 bypass so the

frontage roads could be made one-way.

- The 'buttonhook' ramps at Highway 6 interchange would be moved and changed to 'slip' ramps.

- A Highway 6 off-ramp would be built south of Highway 30 so mall traffic from the north could bypass the Highway 30 and west frontage road intersection.

- Traffic signals would be built at the Highway 6 inter-

change and the mall main entrance on Highway 30.

- Holleman Drive would be extended to the mall.

The study assumed that all the improvements listed above were necessary to provide acceptable service around the mall. However, in June 1981, the state told the city no improvements would be made by the State Highway Department of Highways and Public Transportation.

Braniff, Pan Am work on joint operating plan

United Press International
DALLAS — Officials of bankrupt Braniff International hope by next week to know if a joint operating agreement with Pan American World Airways is feasible.

Howard D. Putnam, Braniff's chairman and president, said Tuesday his airline and Pan Am have been involved in exploratory talks since May 24 on whether or not a joint operating agreement could be made to return some grounded Braniff planes to the air.

"The ball is now in Pan Am's court," Putnam said. "As soon as Pan Am draws up an operating plan on paper, I will turn it over to (chief financial officer) M. Philip Guthrie to cost-out. We should have it cost-out in another week."

Putnam said it was too early to tell if an agreement could be reached.

Under any agreement, the airplanes probably would be flown on former Braniff routes under a contract from Pan Am.

Meanwhile, a Fort Worth bankruptcy judge has scheduled a June 17 hearing to decide whether to appoint a special committee to give Braniff ticket holders a chance to recover some money from the airline, which ceased operations May 12.

The judge also scheduled a June 22 hearing on whether to allow the Dallas-Fort Worth Airport Board to evict Braniff from its world headquarters and terminal facilities.



WTAW 92 FM presents

"The Search For The Perfect Cowgirl!"

MISS COWGIRL "10" CONTEST

A Western-Wear Oriented
Beauty Competition At

GRAHAM CENTRAL STATION



Preliminaries

JUNE 22

Finals

JUNE 29

GRAND PRIZE!

A week in the Bahamas for two at Holiday Inn on the beach plus \$200 spending money, from Graham Central Station and WTAW!

FIRST RUNNER-UP!

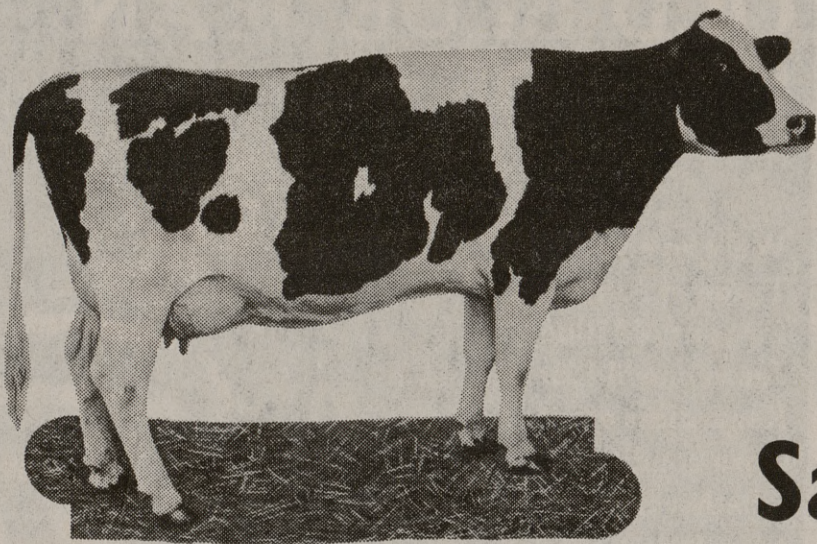
Falcon II Waterbed with Deluxe Heater and Safety Liner, from Waterbed Gallery!

SECOND RUNNER-UP!

Ladies CowGirl Boots from Court's Western Wear!

Applications Available At GRAHAM CENTRAL STATION, WTAW, WATERBED GALLERY or COURT'S WESTERN WEAR

DEADLINE FOR APPLICATIONS JUNE 15!



COW-MILKING CONTEST

Saturday, June 12 1:00 p.m.

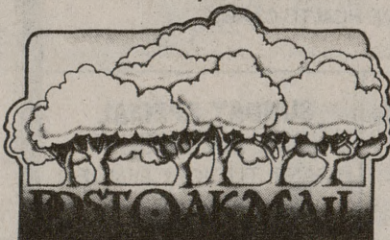
in

POST OAK MALL

June is National Dairy Month!

So, in honor of old Bossie, Post Oak Mall is having a cow milking contest. Mayors, fire chiefs, radio, T.V. and newspaper personalities will be doing their "utter" best, starting at 1:00 p.m., Saturday in Post Oak Mall. Donations benefit Consolidated Honor Choir in their "Aim for Austria."

Cow compliments of Texas A&M Dairy Center



Texas 6 Bypass at Hwy. 30

College Station, Texas

Open Monday-Saturday 10 a.m.-9 p.m.