

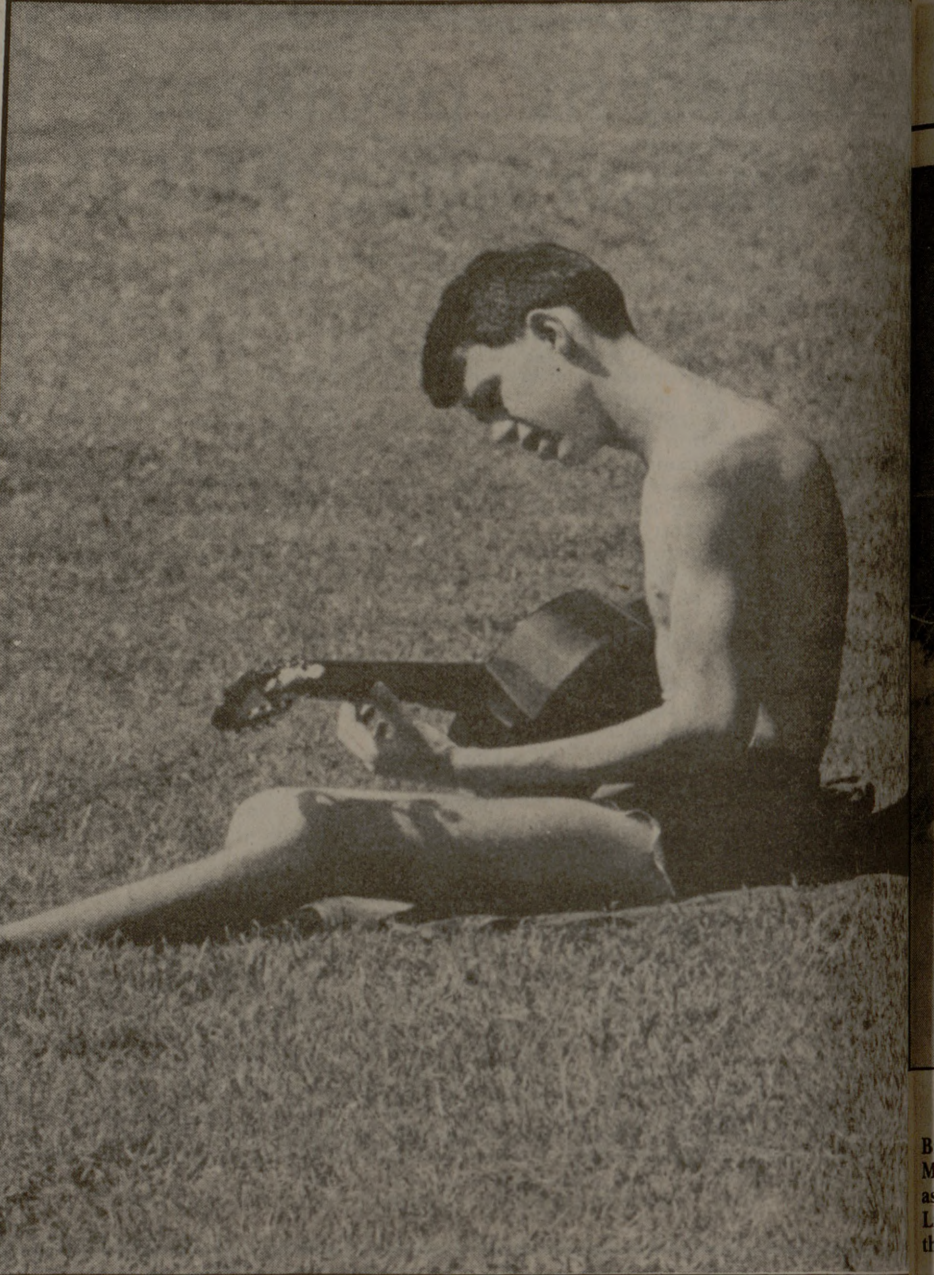
Bright

(continued from page 1)
leadership ability, remarkable experience."
He pointed to Hansen's 13-year record, first as president of Purdue, then as president of Georgia Tech, then as president of Purdue. Quoting an editorial in an Indiana newspaper, Bright said Hansen's record at Purdue was virtually flawless.
"He has an access to business, industry and finance that will be valuable to a university system such as ours," he said. "He is an outstanding scholar and the ability of A&M to attract him will attract nation-wide academic ability."
Bright also praised Hansen's skill in handling the press. He cited an interview with Lane

Stephenson, the University director of public information. The interview "put Hansen on the spot" about the hiring of Head Coach Sherrill, Bright said.
The interview appeared March 26 in Fortnightly, a newsletter for University faculty and staff.
Bright read Hansen's answer to the audience, calling him a "born diplomat." Hansen had said that Sherrill's hiring reflected the board's commitment to excellence, and that he intended to pursue exactly the same policy.
Convincing Hansen to come to Texas A&M was difficult, Bright said.
"We competed for him with Purdue, which wanted him to stay; we competed with the University of Alabama System, a three-university system; we

competed with the University of California System, a 29-university system," he said. "And he picked A&M over those."
"He picked A&M because he felt it had more potential than any place else in the United States."
However, after the speech, Bright said he disagreed with Hansen on one subject.
Hansen has said the Board of Regents would benefit from a student member. A student now serves on Purdue University's Board of Trustees, their equivalent of a board of regents.
But, Bright said, "Deciding who sits on the board is not Dr. Hansen's function and it's not mine. It's the Legislature's and the Governor's function."
"I personally do not see the value of it to the University or to

the person who sits on the board. But I have no more to do with it than I have to do with selecting the editor of The Battalion."
Bright also discussed how much the University has changed since Sul Ross members graduated. He cited enrollment and budget growth, the admission of females and the dropping of the ROTC requirement.
"There have been many changes ... not all of them are bad changes, but some of them are hard for us to swallow," he said.
Bright said Randy Matson, executive director of the Association of Former Students, had warned him that some people in Wednesday's audience believe membership in the Corps of Cadets should still be required.
"And I said, 'Randy, you're talking to one of them,'" he said. The audience laughed and applauded.



A solo outdoor concert

Tom McCaulley, a senior engineering technology major from Carrollton, takes advantage of the sunshine while he plays his guitar the park across from G. Rollie Coliseum.

Hospitals dangerous to patients

United Press International
It's ironic, but one of the easiest places to pick up a dangerous infection is lying in a hospital bed, a doctor claims.
Hospital patients are commonly exposed to a number of infectious diseases — including pneumonia and staphylococcal infection — just when their resistance to disease is lowest, according to Dr. Richard Wenzel, director of Virginia's statewide infection control program.
"From 50,000 to 100,000 patients died in 1980 in U.S. hospitals as a direct result of hospital-acquired bloodstream infections," Wenzel said in Science Digest magazine.

SMU-IN-SPAIN FALL 1982

spain
spain
spain
spain

Courses taught in English include:
Art History Marketing
Economics Philosophy
Finance Political Science
History
Additional courses are offered in Spanish language and literature.
Live with a Spanish family or "senora" or in an apartment.
SMU-in-Spain is open to all majors.

Please send me information on SMU-in-Spain.

NAME _____

ADDRESS _____

Return to:
Southern Methodist University
International Programs Office
Dallas, Texas 75275

TAMU Theatre Arts Program Presents

Dames At Sea

Book & Lyrics by George Haimsohn & Robin Miller.
Music by Jim Wise.



8:00 April 14-17 Rudder Theatre
Tickets Available at Rudder Box Office

\$2.50 Students \$3.50 Non-Students

Free Delivery
846-7751
846-3768



Fresh Homemade Pizza.
We Use Only 100% Mozzarella Cheese.
301 PATRICIA

Pepperoni	Sausage	Jalapenos
G. Beef	Ham	Gr. Pepper
Xtr Cheese	Anchovy	Onion
Mushroom	Gr. Olive	Bl. Olive

REGULAR CRUST

CHEESE	12"	16"	20"
ADD. ITEM	.90	1.35	1.75
SUPREME	7.90	10.50	15.50
Pepperoni, Sausage, Mushrooms, Gr. Pepper, Gr. Olive, Onion			
FAVORITE	7.90	10.50	15.50
Ham, Onion, Gr. Pepper, Bl. Olive, Mushrooms, Gr. Beef			
KITCHEN SINK	9.75	13.25	21.00
Everything - No Anchovy!			

THICK CRUST

SICILIAN CRUST			
CHEESE	12"	16"	20"
ADD. ITEM	5.20	7.25	13.00
SUPREME	.90	1.35	1.75
Pepperoni, Sausage, Mushrooms, Gr. Pepper, Gr. Olive, Onion			
FAVORITE	8.40	11.15	17.25
Ham, Onion, Gr. Pepper, Bl. Olive, Mushrooms, Gr. Beef			
KITCHEN SINK	10.25	14.20	22.75
Everything - No Anchovy!			

2 Free Cokes everyday with Every Pizza

Hot tubs cause skin irritations

United Press International
NEW YORK — The proliferation of hot tubs and whirlpools has caused a wave of inflammation problems, according to an article in *Annals of the New York Academy of Medicine*.
The article quotes Dr. Silverman of Pittsburgh, saying the problem has become increasingly widespread. "Hot tub rashes" break out with an inflammation which needs moisture to grow.
Silverman explained that hot tubs cause the skin to become "superhydrated and break down."
Even though no treatment is necessary unless the rash persists, he said, it's important to identify the source of the problem to risk reinfection of another hot tub.
Chlorine does not help the bacteria, because chlorine dissipates in the 100 degree temperature of hot tubs.



SALE ENDS SAT.
1620 Texas Ave.
693-3716
Mon.-Sat. 9-9 Sun. 10-6

Coors REG. Lite
\$2.29
6 pac cans



PEARL BEER
\$2.89
12 pac

PEPSI
6 pac 16 oz.
\$1.59



INFLATIBLE WATER TOYS
25% OFF