

Texas A&M

# The Battalion Sports

February 12, 1982 Page 13

Hard-luck Owls 4-7 in SWC

## A&M faces Rice Saturday

by Frank L. Christlieb  
Sports Editor

The Rice Owls, at one point in season the Southwest Conference surprise, have endured unpredictable season. After easily defeating two nationally ranked teams to win the Rainbow Classic Dec. 30, the Owls' success has dwindled to extinction. In tournament games over Hawaii, San Francisco and North Carolina State, the Owls and the SWC were in the national spotlight. As a result of Rice's rise to fame, the Owls gained recognition as one of the nation's most balanced teams.

However, the Owls' luck has been constant during conference play. Although forward guard Pierce, averaging 27.4 points a game, has led Rice to

two victories over Texas Tech and one over the University of Texas, consistency has been lacking in the Owls' play.

But Monday night, the Owls played one of their best games of the conference season in defeating Texas Tech 76-56. The victory gives Rice a 4-7 conference record and a 13-11 season record.

Texas A&M faces the Owls Saturday night at 7:30 in G. Rollie White Coliseum, with the Aggies coming off Wednesday night's 67-58 victory over the SMU Mustangs. The Aggies, 7-4 in the conference and 14-7 for the season, are one game out of first place behind the Arkansas Razorbacks.

Arkansas lost 56-55 Thursday night to the Baylor Bears, dropping its conference record to 8-3.

Texas A&M coach Shelby Metcalf praised his team on its victory over SMU.

"I was real proud of our discipline, patience and shot selection," Metcalf said. "SMU forced us to play a controlled game and we did very well."

Led by Milton Woodley's career-high 15 points, the Aggies shot 54 percent from the field. Metcalf also said that reserve forward Mike Thomas, who had eight points in the second half, has progressed during the last few games.

"I was really pleased with Mike Thomas," Metcalf said. "He played well in the Texas Tech game too. He played well on both ends of the floor against SMU... it was very fortunate we had him."

"We already had three guards on the floor at the end. I guess

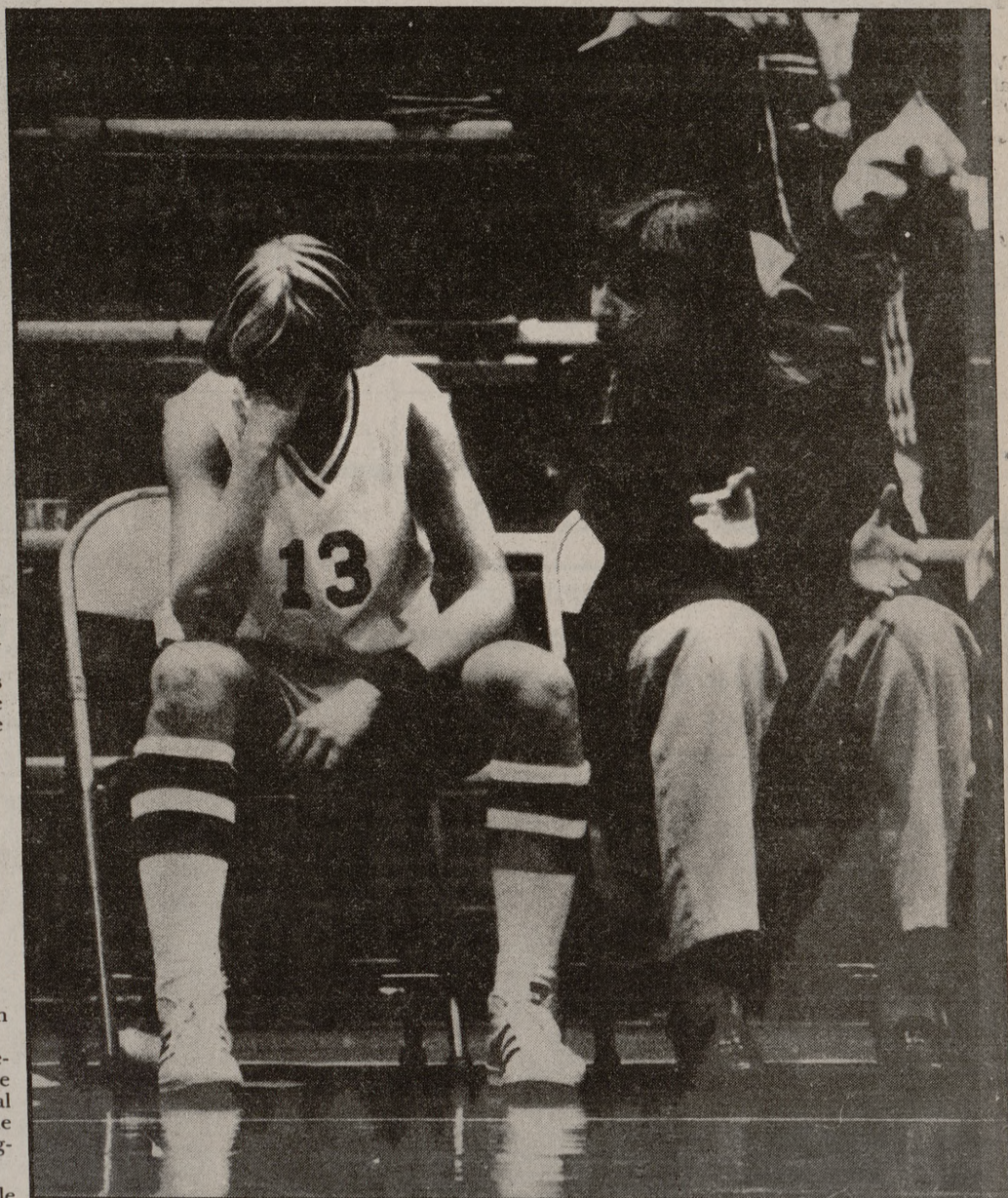
we would have gone with four guards and Claude (Riley) if we wouldn't have had him."

Thomas entered the game when center Rudy Woods fouled out with 14:24 remaining. Since backup center Lonnie Bluntson had sprained his right ankle in the first half, Metcalf inserted Thomas.

"Rudy was starting to play in the second half," Metcalf said. "He was getting cranked up and playing pretty good. I didn't take him out when he had four fouls because he was picking it up."

Riley leads the Aggies in scoring and rebounding, averaging 15.3 points and 10.3 rebounds a game.

The Aggies play Arkansas Monday in Fayetteville before returning home to face the Texas Longhorns Feb. 20.



staff photo by Peter Rocha

### Having a player-to-coach talk

Aggie Ladies' coach Cherri Rapp talks to guard Sheryl Clark during the team's 55-53 victory over the SMU Mustangs Wednesday night. The Ladies, now 8-17 for the season, play Arkansas tonight at 7 in G. Rollie White Coliseum.

## Aggie tennis teams face SFA, SWT during weekend matches

by Denise S. Sechelski  
Battalion Staff

The Texas A&M men's and women's tennis teams play a full weekend of tennis by hosting Stephen F. Austin State University on Friday and Southwest Texas State University on Saturday.

All matches begin at 1:30 at the Omar Smith Tennis Center. The men's team is undefeated this season, but will be facing its toughest competition of the year, tennis coach David Kent said.

"We'll be challenged more than we ever have been so far,"

Kent said.

In Friday's meet against SFA, junior Brian Joelson will play the number one singles match. Joelson has won two matches and lost only one this spring.

Mike Pazourek will be the top ranked singles player against the Division II champion SWT.

The women's team also plays Stephen F. Austin on Friday in its opening match of the spring.

"It should be a good match because they've recruited some good junior college players," women's tennis coach Jan Cannon said.

Amy Closs, a sophomore, will play in the number one singles match against SFA and Teresa Landry will play in the number one singles match against Southwest Texas.

The match against Southwest Texas should be easier for the Aggies than the one against Stephen F. Austin, Cannon said.

"Two of the best players (at Southwest Texas) went home to Australia at mid-term, so they're weaker than they were at the beginning of the year," she said.

Liliana Fernandez, the Aggie's leading singles player, will skip both meets here to play

in the Avon Championships in Houston.

Fernandez, a junior, was recruited from Colombia where she was the Colombian National Singles Champion and the South American National Singles Champion.

The Aggies have unbelievable depth in doubles play, Cannon said.

Pam Hill and team captain Maylyn Hooten will play in the top match against SFA. Cheryl Stanford will team with Closs in the number one match against Southwest Texas.



Come to  
*the 1st annual*

# INTERNATIONAL ART FESTIVAL

Sunday, February 14 ★ One day only ★ 10 a.m.-6 p.m.

Live music, original art, food and native costumes from around the world.

FREE ADMISSION ★ *Bring the Family* ★

Brought to you by the Brazos Valley Art League, TAMU International Student Assoc., and the Arts Council of the Brazos Valley.

BRAZOS CENTER

3232 Briarcrest Drive