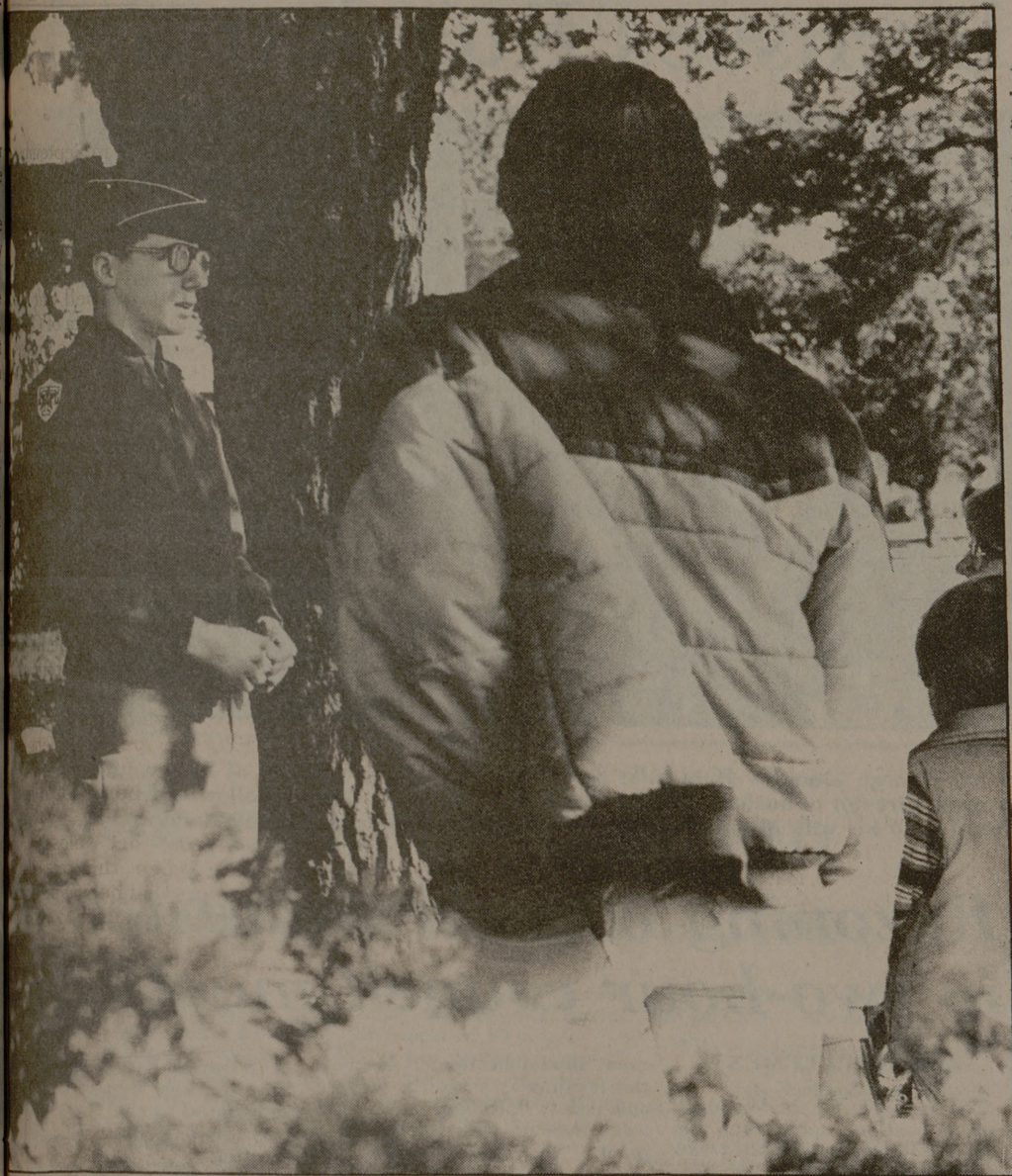


Local

Prospective students view campus on special tours



Staff photo by Bob Sebre

Russ Ingram, a sophomore civil engineering student from Elmendorf Air Force Base, Alaska, conducts a tour of the campus for the Rudder Tower Information Center.

By JENNIFER WAYMAN
Battalion Reporter
Special tours of the Texas A&M University campus by the Rudder Tower Information Center are available for visitors.

The Information Center, a branch of the Office of School Relations, gives the tours to individual visitors, high school groups or others wanting to know more about the University. Tours are offered Monday through Friday from 8:30 a.m. to 4:30 p.m.

Tours can be scheduled directly through the center, Elaine Kendrick, an information center coordinator, said.

"We will also set up an appointment for him to talk to an adviser in the field of study he is interested in," she said.

About 20 prospective students a week take the one-hour walking tour given by one of 14 student tour guides, said Pam Cherry, an information center coordinator.

The tour begins at the mini-theater, to the left of the Rudder Tower information desk, where visitors can watch a film about the University and student life. Slide presentations of the various colleges on campus are also shown.

Russ Ingram, a sophomore civil engineering major who is a tour guide, said the tourists are then

taken to the top of Rudder Tower to view the campus and through the Memorial Student Center. From the MSC, the guide then takes them to various points of interest such as the president's home, Kyle field, the library and the medical and veterinary medicine schools, he said. Many of the residence halls and other buildings on campus also are pointed out.

While showing the campus, tour guides tell the prospective students about Texas A&M traditions and give them a brief history of College Station, Ingram said.

Guides take about two students at a time, many of whom bring their families, Kendrick said.

Cherry said large high school groups from all over the state come to tour the campus. Sometimes they will want to tour a certain area of the campus such as the vet school and we are able to accommodate them, she said.

Aside from the general walking tour, other tours are available, in such places as the observatory in the Oceanography and Meteorology Building, the nuclear reactor and the Cyclotron. These special tours are not arranged by the Information Center but can be scheduled through the respective departments, Cherry said.

The observatory, which offers a view of the campus from 158 feet, is open to the public every Tuesday at 4 p.m., Weather Station Manager Charlie Brenton said.

Kendrick said another popular attraction is the nuclear reactor. Reactor supervisor Gary Waldrep said nuclear engineering students are available to explain how the reactor works and answer any questions about it. He said those wishing to tour the reactor may drop by any time from 9 a.m. to noon and from 1 p.m. to 4 p.m., Monday through Friday, but asks that large groups make an appointment.

Anyone wishing to find out about the various tours that Texas A&M offers or any prospective student who wants to take a walking tour of the campus may call or drop by the information center for more details.



Amity LSAT SEMINARS

15 student average class size
5 Specialist Instructors
Convenient weekend classes
EXCLUSIVE MATH REFRESHER

Classes for the Dec. 5
LSAT meet in Austin and
Houston Nov. 21, 22 & 23.

For information call
800-243-4767

NORTON
An Equal Opportunity Employer, M/F

CHRISTENSEN
USE ONE OF OUR PRODUCTS
NORTON/CHRISTENSEN
RECRUITERS
want to hire TEXAS A&M Graduates

CHRISTENSEN Jobs:
•Regional Engineers
•Sales & Service Reps
*Call for complete guidelines

NORTON Jobs:
•Industrial Sales
(Abrasive Products)

Interviewing on campus
November 17 & 24, 1981
Sign up now at the Placement Office.
Learn more about NORTON/CHRISTENSEN
opportunities at our Hospitality Suite,
Rudder Conference Center, Room 309
7 to 9 PM on Monday, November 16, 1981.

Texas A&M

Songfest



"All That Jazz" Greek Variety Show
November 14
8 p.m.

Bryan Civic Auditorium
tickets: \$2.00 advance
2.50 at door
available at 1501 Athens
or call 693-5340

To benefit Brazos Valley Rehabilitation Center

SOUND PROVIDED BY "MUSICIAN'S WORLD"

Chi Omega's fifth variety show Songfest, to be held Saturday

By MARY JO RUMMEL
Battalion Staff
Eleven groups of local sorority and fraternity members will sing something more than their supper at the fifth annual Songfest Saturday.

The annual variety show is sponsored by Chi Omega sorority and all proceeds will benefit the Brazos Valley Rehabilitation Center.

Performing groups, ranging in size from six to 70 performers, will sing for first through third place trophies.

In addition to the contestants' talents, the show will include per-

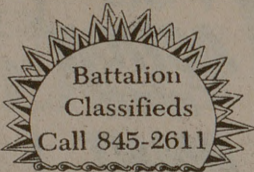
formances by the Cheyennes, the Bryan High School Dance team and the Aggenizers, the barber shop quartet section of the Texas A&M Singing Cadets.

The judges for the contest are Jane Lee, owner of Jane Lee School of Dance, Derrick Grubbs, the announcer for Texas A&M baseball games and Dr. Sylvia Crider, assistant dean of the Graduate College and member of the King's English Old Time String Band, a blue grass band made up of Texas A&M faculty.

The Brazos Valley Rehabilitation Center is a volunteer organization which rehabilitates hand-

icapped individuals. Most of the money used by the center goes toward buying braces and crutches for the disabled, Songfest Chairman Ro McPherson said.

Songfest will begin at 8 p.m. in the Bryan Civic Auditorium. Tickets are \$2.50 at the door or \$2 bought in advance from any Chi Omega member.



GRINS BEER GARDEN

Appearing **LIVE** Friday & Saturday Night

"UNCLE WALT'S BAND!"

Cover \$3.50

4410 College Main 846-9438

"FROM BONFIRE TO WILDFIRE" WITH Michael Murphey

AFTER THE AGGIE BONFIRE

NOV. 25TH 9 P.M.

NOV. 2ND-6TH — OPTION PERIOD
NOV. 9TH — ALL TICKETS GO ON SALE

PRICES: \$2.50 \$3.25 \$4.75

TICKETS AVAILABLE AT MSC BOX OFFICE
FOR MORE INFO 845-1234
PRESENTED BY MSC TOWN HALL AND MSC BASEMENT

2207 NUC. BRYAN, TX

PAY TO THE ORDER OF

BRAZOS Savings
Main Office: 2800 Texas Avenue / Bryan

MoneyStore offers no service charge checking with a \$250 balance.

Every dollar earns 5 1/4% — regardless of balance.

MoneyStore is unlike any other checking account. You can use MoneyStore 3 ways and there is no cost (if you maintain a \$250 minimum balance each month).
Write checks. Or call us and we'll pay your bills for you. Or authorize us to pay your recurring bills automatically. There is no transaction charge no matter how you use MoneyStore.
Every dollar earns the maximum interest permitted by law, regardless of balance.
Withdraw cash from any of our Central Texas offices or drive thru lanes. With the MoneyStore Photo Card, there's no waiting for signature verification.

It's easy to open a MoneyStore account. And we'll pay you while you use it.

BRAZOS Savings

Main Office: 2800 Texas Avenue Bryan
College Station: Texas Ave. at Southwest Parkway / 696-2800