

What's up at Texas A&M

Thursday

MSC CEPHEID VARIABLE: Journey to the Center of the Earth will be shown in 601 Rudder Tower at 7:30 p.m. and 10 p.m.

M.B.A. ASSOCIATION: General meeting at 7 p.m. in 301 Rudder Tower.

AMERICAN SOCIETY OF PERSONNEL ADMINISTRATIONS: Patrick McConnell of Mosteck will be speaking in 510 Rudder Tower at 7:30 p.m. Other information about future meeting will be announced.

TAMU MATH CLUB: Frank Walker, an Actuarist, will be speaking at 6:30 p.m. on 3rd floor Milner Lounge.

PUTT PUTT GOLF: Contest will be held at 6 p.m. at Poo's Park.

SAILING TEAM: Meeting in 305 Physics Building at 7:30 p.m.

UNIVERSITY LUTHERAN CHAPEL: Leave for Sherwood Nursing Home to sing and visit at 6:30 p.m. Meet at University Lutheran Chapel.

CATHOLIC STUDENT ASSOCIATION: Reflective Bible Study at 7:30 p.m. in Bill's office. Married students will meet at 9 p.m. in Student Center. Night prayer will be at 10 p.m. in St. Mary's Church.

UNITED CAMPUS MINISTRIES: Womens Bible Study at 7 p.m. at 1002 Pershing.

HUGHES HALL: A program on future dorm construction, resident hall rates and enrollment controls will be at 7 p.m. in the A-1 lounge between Hughes and Fowler on October 20th. It will be given by Ron Blatchley and Jim Ferguson. Everyone is welcome.

AGRICULTURE ECONOMICS CLUB: Pictures for the Aggeland will be taken and future plans will be made at 6:15 p.m. at Rudder Fountain.

TAMU INTERNATIONAL FOLK DANCERS: Meeting at 8 p.m. in the Hillel Jewish student center at 800 Jersey.

MSC OUTDOOR RECREATION: A wilderness first aid seminar will be given at 7:30 p.m. in 302 Rudder.

MSC AMATEUR RADIO: A discussion of radar and autocross communication will be on the 12th floor of the O&M building at 7:30 p.m.

MARKETING SOCIETY: Mandatory meeting for all those going on the Dallas trip will be at 7:30 p.m. in 102 of the A&A building.

III ANNUAL ANTHROPOLOGY LECTURE SERIES: Together with Dept. of Biology and the Graduate College presents topics in Pleistocene Extinctions, "Environment and Cultural Interaction in the Late Pleistocene and Early Holocene in the Southern Plains" by Dr. Eileen Johnson from Texas Tech at 2 p.m. in 204C of Evans Library.

TEXAS A&M FENCING CLUB: Will hold open fencing and challenge bouts, discuss beginner's clinic and competition at 7 p.m. in 267 E. Kyle.

MARANATHA CHRISTIAN FELLOWSHIP: Presents movie "Born Again" from the book about Chuck Colson, former Watergate conspirator at 7 p.m. in the A&M Middle School Auditorium (on Jersey) tonight and tomorrow night.

Friday

HUGHES HALL: A program on future dorm construction, resident hall rates and enrollment controls will be at 7 p.m. in the A-1 lounge between Hughes and Fowler on Oct. 20th. It will be given by Jim Ferguson and Ron Blatchley. Everyone is welcome.

III ANNUAL ANTHROPOLOGY LECTURE SERIES: Together with the Dept. of Biology and the Graduate College presents topics in Pleistocene Extinctions, "Ancient Man in the New World: Early Technological Repertoire" by Dr. Robson Bonnichsen from the University of Maine at 2 p.m. in 204C of Evans Library.

UNITED CAMPUS MINISTRIES: A bible study at 6:15 in Rm. 145 MSC. All denominations are welcome.

CATHOLIC STUDENT ASSOCIATION: The Newman club will have a pot luck dinner at St. Mary's student center, then go to Poo's Park for roller skating (cost-\$2.00). Please bring a dish for the supper.

TURKISH STUDENT ASSOCIATION: A meeting to plan activities will be at 6 p.m. in 607 Rudder.

ACCOUNTING SOCIETY: There will be a "South of the Border" party at 8 p.m. in the Courtyard Apts. party room.

MARANATHA CHRISTIAN FELLOWSHIP: Presents the movie "Born Again" from the book about Chuck Colson, former Watergate conspirator at 7 p.m. in the A&M Middle School.

AMERICAN SOCIETY OF MECHANICAL ENGINEERS: Ingersoll-Rand Co. will sponsor an open house for graduating M.E.'s and all ASME members from 3-6 p.m. in Ballroom C of the Ramada Inn, College Station. Beer and snacks will be provided.

TEXAS STUDENT EDUCATION ASSOCIATION: There will be a District III convention from 11 a.m.-5 p.m. in the MSC.

INTER-VARSITY CHRISTIAN FELLOWSHIP: Randy Lahr will speak on his experience in Russia at 7 p.m. in 510 Rudder.

WORLD FOOD DAY-INTERNATIONAL STUDENT ACTIVITIES: Agrisparkers will speak on world food day at noon by Rudder Fountain.

14 Saturday

TEXAS A&M FENCING CLUB: A beginning foil clinic and competition with voted guest coach Roland Reed at 10 a.m. in 267 East Kyle.

TAMU HISTORICAL SOCIETY: Meet in G. Rollie White parking lot at 8:30 a.m. for the Renaissance Festival trip. Cost is \$8.95 for gas and food.

FLORICULTURE ORNAMENTAL HORTICULTURE: Plant sale in the floriculture greenhouse from 10-2 p.m.

TAMU ROADRUNNERS: Talk on "Variations in Training Techniques" followed by 2-mile and 4-mile runs at 8 a.m. on the aerobic track. Donuts and coffee served after the runs.

TEXAS STUDENT EDUCATION ASSOCIATION: District III Convention from 9-12 p.m. in the MSC.

National

Report says air traffic facing hard '83 winter

WASHINGTON — The air traffic control system could be in serious trouble by the winter of 1983 because of overly optimistic projections on replacing striking controllers, a House staff analysis said Wednesday.

The report, released by the House Post Office and Civil Service Committee, said the only way to correct the situation is to rehire controllers who went on strike Aug. 3.

The Democratic Study Group, an organization of House liberals and moderates, issued a separate report concluding the Reagan administration, the striking Professional Air Traffic Controllers Organization and the American

public are all losers because of the walkout.

But, the report said, "the biggest loser is the American public, which not only has to foot the bill for the administration's \$12 billion in additional spending and revenue losses, but which also must bear the brunt of an estimated \$3 billion in annual losses to businesses and state and local governments."

The report continued: "In addition, it is the public — not the air controllers or the Reagan administration — which must bear whatever increased danger there is in air travel as a result of the PATCO administration impasse."

In its 15-page report, the House Civil Service committee staff

questioned whether the Federal Aviation Administration will be able to reach the goals it has set for rebuilding the controller workforce after dismissal of more than 11,000 strikers.

"It appears that by the winter of 1983, the system could be in serious trouble," the report said.

The work force, will be only a two-thirds of the level the FAA now considers necessary for full capacity. This is 20 percent below the pre-strike levels.

Air controllers will have little experience, and supervisors military and others augmenting the work force will have experienced 16 months of long hours little leave, and, for some, dug away from home.

MSC RECREATION

presents

the

EAT THE HELL OUTTA RICE CONTEST

Tuesday, Oct. 20th 1 p.m. MSC Fountain

Sign up in Rm. 216 MSC at the secretary's desk.

PRIZES AWARDED

MSC TOWN HALL PRESENTS:

AN EVENING WITH

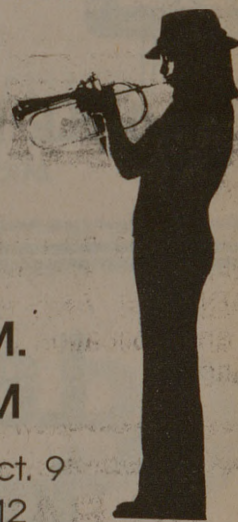
CHUCK MANGIONE

OCTOBER 25TH 8 P.M.
RUDDER AUDITORIUM

Option period: Oct. 5 through Oct. 9
General ticket sales begin: Oct. 12

Ticket Prices are: \$7.50, \$8.50, \$9.50

Tickets are available at Rudder Box Office
For more info call 845-2916



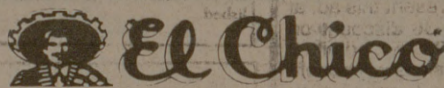
\$1.25 million faulty casket suit buried in court until February

United Press International
TYLER — A \$1.25 million federal lawsuit filed by three women who say their deceased relative's casket gave way at his funeral has been postponed until Feb. 1.

Thelma Rawlinson and her daughters, Carol Scott and Joyce Williamson, all of Jacksonville are

suing the Toccoa Casket Co. of Toccoa, Ga.

Rawlinson claims the body of her husband, Dallas L. Rawlinson, fell through the bottom of his casket and onto the ground near his gravesite during his funeral July 15, 1979, in Jacksonville.



ANNOUNCING OUR NEW EXPANDED HAPPY HOUR

2-7 p.m. Daily

2 FOR 1 HIGHBALLS
FROZEN DRINKS 1²⁵

3109 Texas Ave., Bryan

823-7470

Open 11-9 Sun.-Thur.

11-10 Fri.-Sat.

DIETING?

Even though we do not prescribe diets, we make it possible for many to enjoy a nutritious meal while they follow their doctor's orders. You will be delighted with the wide selection of low calorie, sugar free and fat free foods in the Souper Salad Area, Sbis Dining Center Basement.

OPEN

Monday through Friday 10:45 AM-1:45 PM

QUALITY FIRST

ON SALE!

Rm. 216 MSC

Calendar Book of Events

Reg. \$4.25

Through Friday, Oct. 23

Only \$2.95!

Includes TAMU Campus events, sporting events, campus directory.

MSC CAMERA COMMITTEE

presents

Open to all amateur photographers

Entry fee: \$2.00 per print

Prints will be accepted at:
MSC 1st Floor Tables
Oct. 19-23
10-4:30

The all new
FALL PHOTO CONTEST

Judging:
Sunday
Oct. 25
Rudder Forum
8:30-5:00

Judging open to public