

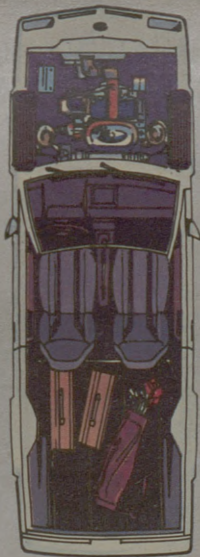
Exciting numbers.

EXP's 1.6 liter CVH engine and standard four-speed trans-axle with fourth gear as overdrive, produce remarkable fuel efficiency.

46 EST HWY **29** EPA EST MPG

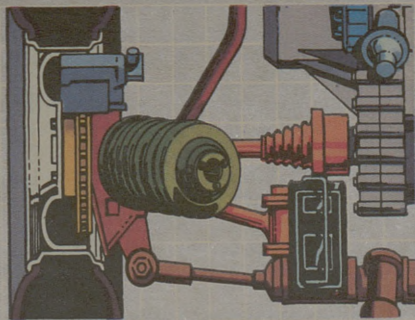
For comparison. Your mileage may differ depending on speed, distance and weather. Actual highway mileage will be lower.

Two front-row seats and a grand opening.



Two plus groceries, or two plus a great weekend, EXP's 29 cubic feet of cargo room can hold it all. And EXP options like flip-up open air roof can make it all the more exciting.

Front-wheel drive, four-wheel independent suspension, fantastic!




EXP's front-wheel drive, four-wheel fully independent

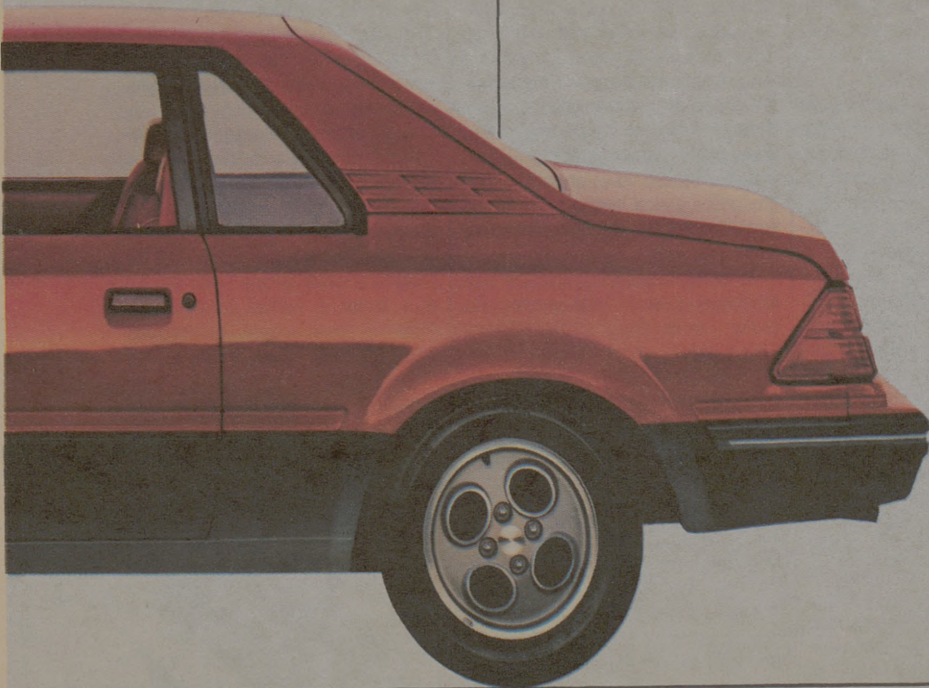
suspension and front stabilizer bar are specially tuned for sporty handling. Combine that with EXP's rack and pinion



steering, standard power front disc brakes and sport close-ratio transmission option and you'll get a whole new appreciation for the street where you live. Whether you buy or lease, see EXP at your Ford Dealer now.

FORD EXP

FORD DIVISION 



**WORLD.
FORD.**

