

EIGHTEEN REASONS WHY CNB IS \$100 MILLION STRONG

City National Bank Board of Directors



MARSHALL C. PETERS
Senior Chairman of the Board
City National Bank



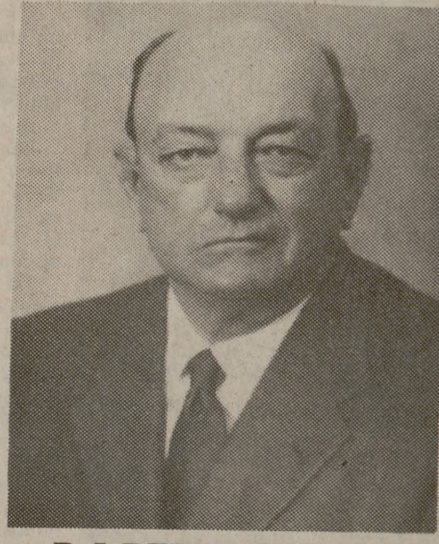
BOOKMAN PETERS
Chairman of the Board
Chief Executive Officer
City National Bank



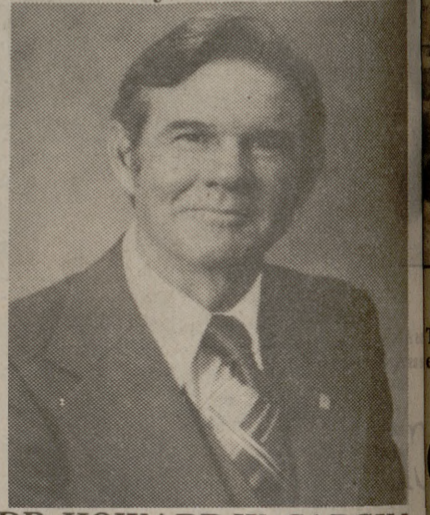
C. J. ALLEN
President
Allen-Olds-Cadillac, Inc.



DELVIN R. BARRETT
President
Feather Crest Farms, Inc.



R. I. BERNATH, JR.
Investments



DR. HOWARD W. CARGILL
Ranching & Investments



A. W. DAVIS
Partner
Davis, Stacy, Lohmeyer & Davis, Attorneys



RONALD E. HALE
Executive Vice President
City National Bank



JOE G. HANOVER, Retired
District Engineer, Highway Department



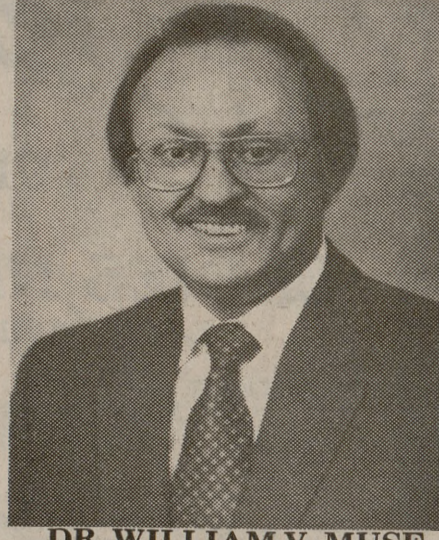
ALLAN W. HANSON
Executive Vice President
City National Bank



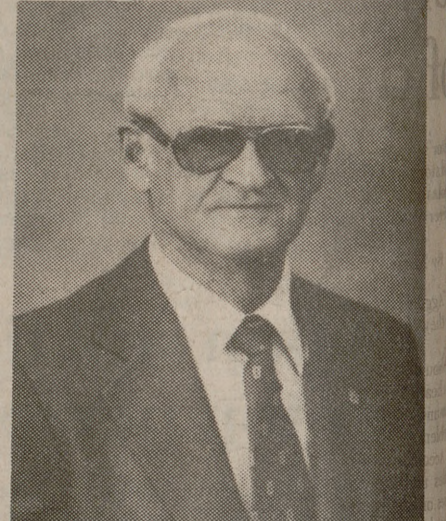
JOHNNY S. LAMPO
Partner
Pizza Huts & Farmers Markets of Brazos Valley



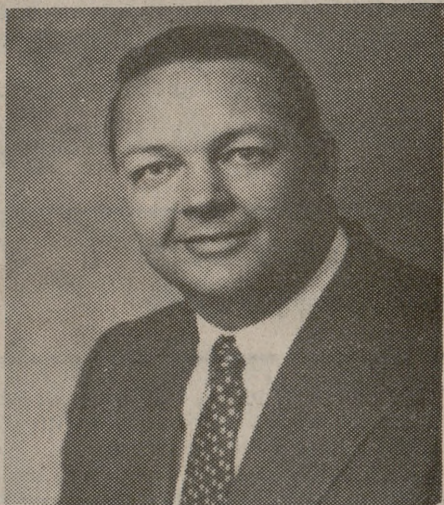
LEONARD E. MOREHEAD
President, Acme Glass Company



DR. WILLIAM V. MUSE
Dean of the College of Business Administration
Texas A&M University



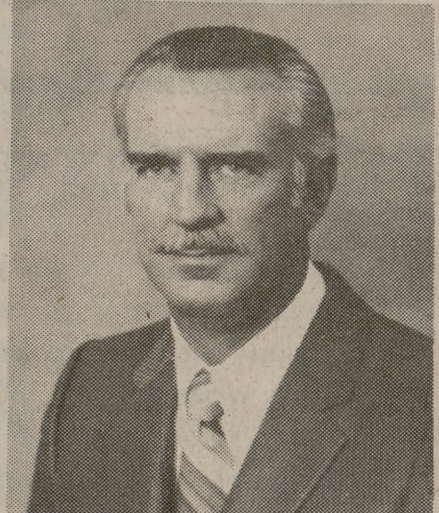
WALDON H. ORR
Investments



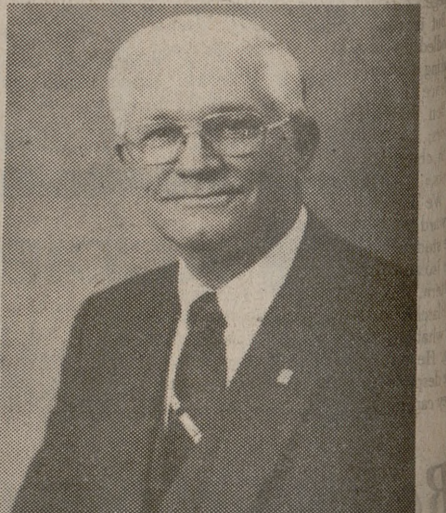
MERVIN D. PETERS
President
City National Bank



ROBERT F. SPEARMAN
President, Spearman, Sears & Murphy, Inc.



JERRY WINDHAM
President, Bernath Concrete Products Co.



FREDDIE A. WOLTERS
Senior Vice President
City National Bank

CITY NATIONAL BANK OF BRYAN

Member F.D.I.C.

