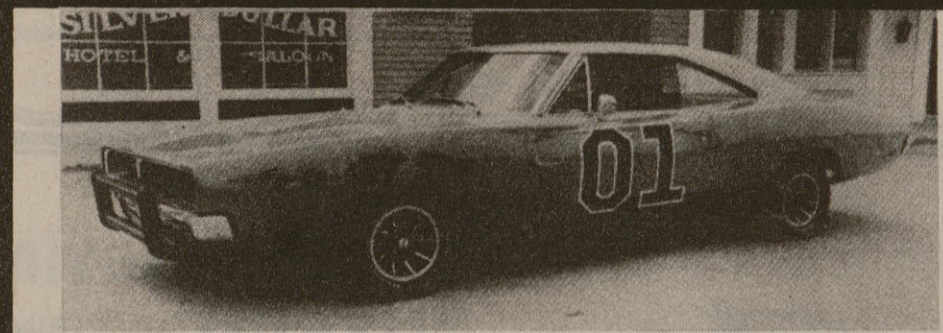


HIGH BLOOD PRESSURE: THE SILENT KILLER!

The Texas A&M Emergency Care Team will sponsor a FREE blood pressure screening.

Come get yours checked:

Wednesday, Feb. 11 and Thursday, Feb. 12 8 a.m. to 5 p.m. both days. Main floor, MSC.



From T.V.'s Dukes of Hazzard "The General Lee" will be at the 2nd Annual Custom Car, Truck & Hot Rod Show. Feb. 14-15 at the Brazos Center, Bryan. For show info. contact Oliver Prieve. 775-4600 Bryan.

MSC AGGIE CINEMA



"NOSFERATU
The Vampire"

WEDNESDAY
FEB. 11
7:30 P.M.

RUDDER
THEATRE

Co-sponsored by MSC Cepheid Variable

ADVANCE TICKETS AVAILABLE MON.-FRI. 9:00 A.M.-5:00 P.M.
TICKETS ALSO AVAILABLE 45 MIN. BEFORE SHOWTIME.

State

Relief sought for inmates

United Press International
AUSTIN — Three members of the Board of Corrections, approved Tuesday for confirmation by the Senate, told a subcommittee that overcrowding is a problem that must be solved regardless of any federal court orders.

U. S. District Court Judge William Wayne Justice found massive violations of constitutional rights

of prisoners in a December opinion but postponed ordering remedies until this month.

One proposed solution to overcrowding, community based corrections, received mixed responses from the three appointees, whose names will go to the Senate for confirmation.

The appointees are Clifford F. Smith Jr. of Houston, Harry M. Whittington of Austin and H.B. Zachry Jr. of San Antonio.

Asked about community-based corrections, Smith told the Nominations Subcommittee, "I am supportive of anything that would help us relieve some of these overcrowded conditions."

Whittington, however, pointed out that such programs take time to set up, are likely to run into community opposition and may be expensive.

He suggested other solutions, including work release, transfer of retarded prisoners to other institutions and early release for some types of offenders.

"Overcrowding is a serious problem not only for the health and conditions of the inmates but just for the fact of three people in a cell," Zachry said. "We've got to get them off the floor. Overcrowding has been and continues to be our number one problem."

Charles Sullivan, executive director of Citizens United for Rehabilitation of Errants, a prisoner advocacy group, told the subcommittee that CURE supports the

appointments of all three.

All have served on the board at least since 1979.

The subcommittee also approved the nomination for reappointment of Lyndon Olson Jr. of Waco to the State Board of Insurance. Olson, 34, was first appointed to the board by former Gov. Dolph Briscoe.

Herbert Snow Harris Jr., was approved for reappointment to the Industrial Accident Board.

Harris said the board's greatest problem is administering the Crime Victims Compensation Act.

"For all practical purposes we're out of money now and indeed in debt," he said. "We're going to get deeper and deeper in debt."

Harris said that by the end of January, the board had processed \$120,000 in claims for which there are no funds.

Sen. Chet Brooks, D-Pasadena, said he and Sen. Peyton McKnight, D-Tyler, are co-sponsoring a bill to increase the amount of money available for compensating victims of crime. The bill would close some loopholes in collection of court costs for the fund and would add a small fee collected from persons convicted of Class C misdemeanors.

The subcommittee also approved the nominations of Vittorio K. Argento, John Lindsey Blair and Jack D. Kilian to the Air Control Board.

Underground parking

Texas A&M University seems to be doing some research in alternate parking methods. Parking Lot 20 is being repaired as the new modular dorms behind Fowler Hall are being constructed.

Reagans to host 15 Hispanic leaders

United Press International
CORPUS CHRISTI — Ruben Bonilla, national president of the League of United Latin American Citizens, said Tuesday he is one of 15 Hispanic leaders invited to meet in the White House with President and Mrs. Reagan.

Bonilla said the meeting Thursday, which will be a working luncheon, could provide an opportunity for him as LULAC's leader to "dramatize the economic plight of Hispanic Americans."

He said it would be a chance "to lend support to those policies which we can support but engage in a candid discussion of the proposed domestic cutbacks, which could have a harmful impact on the poor."

"We recognize there are significant philosophical differences," Bonilla continued, "but as Hispanics, we are determined to support those governmental policies which will promote greater employment and productivity in our nation."

PEPPER'S

A #6
Burger
Basket
& a small
drink

only
\$2.00

(Ends Thurs.
Feb. 12)

DELUXE

HAMBURGERS

1800 S. Texas Ave. College Station 693-9515

St. Valentine's Day Diamond Special

Now through Valentine's Day take advantage of our tremendous inventory of loose diamonds in all shapes, sizes and qualities. Save on heart shapes, emerald cut, marquise, pear shape, oval and the traditional round brilliant cut diamonds.

Heart Shape			Emerald Cut			Marquise			Pear Shape			Oval		
SIZE	QUALITY	PRICE	SIZE	QUALITY	PRICE	SIZE	QUALITY	PRICE	SIZE	QUALITY	PRICE	SIZE	QUALITY	PRICE
.49	4A	1375	.24	4A	500	.22	3A+	450	.17	3A+	255	.35	3A	630
			.25	4A	525	.24	3A	480	.37	2A+	775	.45	3A	1035
.53	2A	900	.28	4A	575	.24	3A+	500	.38	3A	825	.46	3A	1200
			.33	3A+	675	.25	3A+	550	.38	3A+	875	.49	3A	1225
.71	3A	1700	.44	3A+	1000	.33	3A+	760	.49	3A+	1370	.51	3A+	1425
			.61	4A	1625	.43	3A+	1050	.58	3A+	1700	.54	3A+	1550
1.06	3A+	5500	.74	4A	2200	.44	3A	1050	.72	3A+	2350	.64	3A	1575
			.143	3A+	7200	.45	2A+	975	.72	4A	2400	.75	3A	1725
						.53	3A	1300	.82	3A+	2700	1.06	3A	3390
						.73	3A+	2250	.96	3A+	3400	1.18	3A	3650
						1.05	3A	3850	1.02	3A	3450			

Round Brilliant

SIZE	QUALITY	PRICE	SIZE	QUALITY	PRICE	SIZE	QUALITY	PRICE	SIZE	QUALITY	PRICE	SIZE	QUALITY	PRICE
.10	4A	110	.22	2A	310	.30	3A	555	.45	4A	1450	.61	3A	1850
.11	4A	120	.25	2A	375	.33	4A	700	.46	3A+	1475	.73	2A+	1775
.12	4A	145	.27	3A	390	.34	4A	750	.47	3A+	1500	1.01	4A+	5500
.13	3A	150	.27	3A+	410	.36	3A+	830	.47	4A	1550	1.04	3A	3950
.16	4A	220	.27	4A	440	.39	3A+	900	.48	4A	1600	1.04	3A-	3500
.18	3A+	250	.28	3A+	445	.41	3A	1000	.49	4A	1650	1.49	3A	5800
.19	4A	285	.28	4A	490	.44	3A	1125	.50	3A	1525	1.72	3A+	7400
.20	3A+	310	.29	3A	505	.45	3A+	1395	.51	3A+	1650	2.63	2A	5500

DIAMOND BROKERS INTERNATIONAL DIAMOND GRADING SCALE:
A-LARGEST STONE AVAILABLE AT LOWEST COST
AA-SLIGHTLY TINTED COLOR WITH INCLUSIONS VISIBLE UNDER 10X MAGNIFICATION
AAA-NICE COLOR WITH MINOR INCLUSIONS VISIBLE UNDER 10X MAGNIFICATION
AAAA-WHITE COLOR WITH INCLUSIONS DIFFICULT TO SEE UNDER 10X MAGNIFICATION

diamond brokers international, inc.

209 East University Drive
In The George Green Building
693-1647

BUSTERS

VALENTINE SPECIAL

BUY ANY DINNER — GET ANY
2ND DINNER AT 1/2 PRICE (WITH COUPON)

Home Style Cookin'
Open Mon.-Fri. 9-9, Sat. 10-3, Closed Sun.
Good thru 2-21-81

1227 S. COLLEGE IN BRYAN
(Across from Bryan Surplus and Supply)

775-0375

BLOOMING PLANTS

For Valentine's Day
A Basket of Flowers
for a
Sweetheart/Friend

\$4.95-7.50 693-5361 8 A.M.-10 P.M.

FREE TIME
Pay Off

Help Supply Critically needed Plasma
While You Earn Extra CASH

At:
Plasma Products, Inc.
313 College Main In College Station

Relax or Study in Our
Comfortable Beds While You
Donate — Great Atmosphere —

\$10
Per Donation

HOURS
Mon.-Fri.
8-4

Call for more Information
846-4611