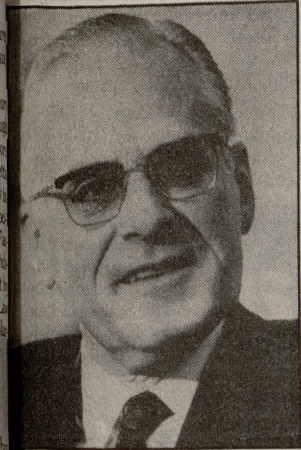


Local

World hunger is biggest problem

Butz pushes profits for farmers



Earl Butz

By CHRISTINE BRZOZOWSKI
Battalion Reporter
Former U.S. Secretary of Agriculture Earl Butz told members of the Bryan Knife and Fork Club Tuesday night that America has got to get over this "cheap food policy" and keep the profit picture for farmers looking good.
Butz, who addressed the group after a dinner held in the Memorial Student Center, said certain senators from non-agricultural states campaign with promises of cutting the cost of food to consumers, without considering what that means to the farmer.
Butz said that can only mean less productivity on the farm, in a nation he said ranked last in the increase of productivity of non-farm labor last year.

"Our need is to get the whole nation back to work," Butz said, "we've got to get strong again."

Butz made several references to how well-fed Americans are compared to people of other nations.

"Two-thirds of the people in the world go to bed hungry, while two-thirds of Americans go to bed worrying if they are going to stay on their diets," Butz said.

Schools like Texas A&M give farmers new ideas and technology to try new farming techniques, said Butz, who was dean of Purdue University's college of agriculture. Americans need to support such colleges so that "the only limiting factor (to better farming) is imagination," he said.

"Can we feed 7 billion people by the year 2000?" Butz said. "Of course we can. The question is, can we feed them well." Butz called this mankind's number one challenge.

"I don't care whether that body is in Tandonesia or in Texas — as soon as the Lord breathes life into that body, it has a right to food."

Butz said American agriculture, which annually has 40 percent of its products left over to sell, has a tremendous lesson to give the rest of the nation.

He said it with a quote from Wendell Wilke, who ran for president against FDR in 1940, "Only the strong can be free; only the productive can be strong — How I wish we could broadcast that from border to border, from coast to coast."

Blown-out gas well still burns

United Press International
PORTLAND — Officials of Boots & Coots Inc., a well fire-fighting team based in Houston, Tuesday tried to redirect flames at a blown-out gas well upward instead of outward.

If successful, the team may be able to determine if the gas well, which has been burning for 11 days, can be capped. Flames from the well have been shooting 30 to 40 feet from the hole.

Rick Baker, an official with the fire-fighting company, said Monday that if inspection shows the well cannot be capped, the only way to control the fire would be to drill two relief wells at a cost of about \$3 million.

Richard Phillips of Phillips and Spradley, operator of the well, said plans to drill the relief wells were proceeding.

Daniel Caron
Cashmere Sweaters
at
Buffy's Boutique
"Your New York Connection"
4340 Carter Creek Parkway Off 29th Street
848-8788 Mon.-Sat., 10 to 6

"WITCH" Way to Prioriteas?
3609 Place E. 29th
Bryan 846-4360
PRIORITEAS
BLENDERS OF GIFT-GIVING

Caperton, McNeil highlight Meet the Candidates' debate

By MARK TRIESCH
Battalion Reporter
While Jimmy Carter and Ronald Reagan debated on national TV last night, candidates for local offices shared their views at a Meet the Candidates Forum sponsored by the League of Women Voters of Brazos County.

that he feels the money is already available in the state budget but needs to be given a much higher priority.

Another topic addressed to both candidates concerned their positions regarding the future of the Permanent University Fund.

Caperton said that he feels the fund must remain intact, but funds must be provided to support other state supported institutions.

McNeil agreed with Caperton on this point saying that no changes should be made in the distribution of available fund money.

Candidate for Brazos County Attorney Jeffrey K. Brown (Rep.) attacked his incumbent opponent John M. Barron Jr. by calling his record "dismal at best" and saying that "now is not the time for excuses."

Barron replied that he had much more experience, better qualifications and great dedication to his job. He defended his record, saying that all of Brown's charges of ineptitude were either minute details blown out of proportion, or completely untrue.

Also taking part in the forum were candidates for County Commissioner of Precinct Three Billy E. Beard (Rep.), incumbent H. L.

"Bud" Cargill (Dem.), candidates for Constable of Precinct Four, Paul E. Madison (Rep.) and Richard Fronterhouse (Dem.), and candidates for Constable of Precinct Seven, Winfred E. Pittman (Rep.) and E. W. Sayers (Dem.).

The League of Women Voters sponsored this event in an effort to better acquaint the community with the candidates and issues of the upcoming elections.

BILL'S AND JAY'S
AUTO TUNE UP
all cars
\$9.75 PLUS PARTS
Oil change PLUS FILTER & OIL \$4.00
Tune up & oil change PLUS OIL & PARTS \$12.75
By appointment only
846-9086
3611 South College Ave.

PREGNANCY TERMINATIONS
Free Pregnancy Testing
Confidential Counseling
(214) 369-5210
North Central Women's Center
Dallas, Texas 75243

Dennis Ivey's LAKEVIEW CLUB
The Very Best In Country-Western Music and Dancing
Thursday Night
5¢ LONE STAR DRAFT BEER!
Cover \$3.00 Men \$1.00 Ladies
Music By Dennis Ivey & The Waymen
Saturday Night
Dennis Ivey & The Waymen
\$3.00 Cover — \$2.00 Pitchers Lone Star
Come Get Acquainted With OF Amarillo, Our Mechanical Bucking Bull.
3 miles north on Tabor Road off the East Bypass

Candidates were allowed to make a three minute opening statement and then respond to questions submitted by members of the audience. After responding to their opponents views, they concluded with a three minute closing statement.

Approximately 60 persons heard candidates for State Senator District Five, Brazos County Attorney, County Commissioner of Precinct Three, and Constable of Precincts Four and Seven state their qualifications and positions on the issues.

Headlining the debates were candidates for State Senator N.A. McNeil (Rep.) and Kent A. Caperton (Dem.).

McNeil opened his statements by saying that his campaign was based on morality, integrity and leadership. He criticized Caperton for supporting legalized abortion, stating that he (Caperton) had accepted over \$2000 in contributions from a pro-abortion group.

Caperton countered by saying that he was more qualified and able to handle the problems of the position than was McNeil.

When asked what one piece of legislation they would like to introduce and have passed in their first year of office, both candidates responded that higher salaries for school teachers was their main point of concern.

McNeil said that he favors funding these pay raises through a windfall profits tax, while Caperton said

Hillel
B'NAI B'RITH HILLEL FOUNDATION
October 29 7:30 p.m.
Come Dance at Hillel
Country Western & Folk Dance
with Ilene Gould leading
Refreshments available.
Hillel Jewish Student Center
800 Jersey C.S.

A Dream Come True
Lindsey's JEWELERS
MANOR EAST MALL
M-F 10 AM-8:30 PM
SAT 10 AM-4 PM

YOUNG ENGINEERS
DO YOU WANT TO BE INVOLVED IN ALL PHASES OF POWER PLANT DESIGN?
ELECTRICALS MECHANICALS CIVILS
TIPPETT & GEE, INC.
CONSULTING ENGINEERS FOR THE POWER INDUSTRY
INTERVIEWING DECEMBER/MAY GRADUATES THURSDAY, NOVEMBER 6, PLACEMENT OFFICE
Design Engineers for power plants throughout the United States and Alaska, including the nearby Gibbons Creek Plant. Our offices are located in the West Texas city of Abilene Formed in 1954
67% Average annual growth rate for the past 4 years.
GROW IN A PROFESSIONAL ATMOSPHERE
TIPPETT & GEE, INC.
502 N. WILLIS STREET
ABILENE, TEXAS 79603
915-673-8291

Sun Theatres
333 University 846-9808
The only movie in town
Double-Feature Every Week
10 a.m.-2 a.m. Sun.-Thurs.
10 a.m.-3 p.m. Fri.-Sat.
No one under 18
BOOK STORE & 25¢ PEEP SHOWS

HAPPY COTTAGE GIFT SHOPPE
*Specializing in Music Boxes
*Selected Imported Jewelry
*German, Austrian & Swiss Gifts
*Decorative Accessories
809 E. 29th Bryan
3 Blks. E. of City Nat'l Bank
822-9393

AGGIES!
Douglas Jewelry
10% AGGIE DISCOUNT ON ALL MERCHANDISE WITH STUDENT ID (Cash Only Please)
We reserve the right to limit use of this privilege.
Downtown Bryan (212 N. Main) and Culpepper Plaza

DRINKS ENTERPRISES
106 N. Parker Downtown Bryan 779-9518
BEER AND CIGARETTE PRICES
CIGARETTES
Reg. & Kings 100's \$5.50 ctn \$5.60 ctn
Shop Us For All Brands of Soft Drinks, Party Goods, Candy and Gum.

SCHLITZ Long necks 12 oz. can & botl. 16 oz. can 24 oz. can Quarts	6 Packs xxx 2.14 2.56 xxx xxx	Case 7.75 (Dep. inc.) 8.15 9.45 7.95 9.20	LONG STAR Longnecks 12 oz. can & btl. 7 oz. btl.	6 pack xxx 2.10 1.82	Case 7.94 (Dep. inc.) 7.90 5.15
SCHLITZ LIGHT 12 oz. can	2.34	8.35	L.S. LIGHT 12 oz. can	2.14	8.15
OLD MILWAUKEE 12 oz. can 16 oz. can	2.05 2.40	7.25 8.80	FALSTAFF 12 oz. can	1.94	7.15
MILLER 12 oz. can & botl. 7 oz. btl. 16 oz. can 12-pak btl.	2.14 1.87 2.44 4.25	8.15 10.10 9.35 8.15	PABST Longneck	xxx	7.70 (Dep. inc.)
LITE 12 oz. can & btl. 7 oz. 8-pak 16 oz. can Longnecks	2.19 1.92 2.51 xxx	8.35 10.40 10.60 7.99	PEARL Longneck 12 oz. can & btl. 7 oz. btl. 16 oz. can	xxx 1.94 1.65 2.29	7.35 7.15 5.50 8.65
LOWENBRAU 12 oz. btl. 7 oz. btl.	2.44 2.15	9.35 12.50	TEXAS PRIDE 12 oz. btl.	1.40	5.00
COORS 12 oz. can & btl. 16 oz. can 8 oz. can 12 pak can	2.14 2.51 1.76 4.10	8.15 9.60 6.35 8.00	ANDEKER Btl. (12 oz.)	2.72	8.30
COORS LIGHT 12 oz. can & btl.	2.21	8.15	TOOLEY xxx	xxx	13.00
BUDWEISER 12 oz. can 16 oz. can	2.14 2.36	8.00 8.95	CARTA BLANC 2.29	2.83	8.75
MICHELOB 12 oz. btl. 7 oz. btl.	2.29 1.89	8.75 10.00	TECATE 2.83	2.83	10.75
NATURAL 12 oz. can	2.22	7.85	DOS EQUIS PABST 12-pak	2.83 xxx 3.95	10.75
			RED, WHITE & BLUE 12-pak can	3.09	6.10
			HEINEKEN'S 12 oz. can & btl.	4.00	15.29
			SAN MIGUEL 3.75	4.00	15.49
			BRAHMA 5.50	4.70	14.49
			STEAM BEER SPATE OCT. LITTLE KINGS 12 oz. btl. 7 oz. btl.	4.70 2.65 2.50	20.99 14.99 18.00 10.00 6.90

MANY MORE ITEMS FOR YOUR PLEASURE
CHECK OUR THURSDAY AD FOR OUR WEEKEND SPECIALS

SPECIAL ASSIGNMENTS...
a special program for technically trained graduates
In our Special Assignments Program you will have the opportunity to work on meaningful projects in several different functional areas before a decision is made regarding job placement on a longer range basis.
We will be interviewing at the Texas A&M on November 5, 1980
... see your placement office for details.
Badische Corporation
Freeport, Texas 77541
Member of the BASF Group an equal opportunity employer