

Problem of 'great dimension' College sexual harassment

Do college girls worried about their grades initiate romances with professors?
Not very often, according to reports on sexual harassment on college campuses. Much more frequently, when teachers and college coeds get "involved," it's the professor who starts the romance perking. And some professors mixed up in this sort of thing make it clear that the student's grades are affected.

A new focus on campus sexual harassment comes in a report in the current Chronicle of Higher Education, in studies presented at the annual meeting of the American Sociological Association, and in other studies.

A major report on the subject will be issued next month by the National Advisory Council on Women's Educational Programs, which Congress established six years ago.

"Sexual harassment of post-secondary students is an increasingly visible problem of great, but as yet unascertained, dimensions," the report says.

The report suggests the U.S. Department of Education's Office of Civil Rights set up a policy to forbid sexual harassment of students. The proposal: sexual harassment of students would be a violation of Title IX of the Education Amendments Act of 1972.

There is nothing new about teachers making passes at students. What is new is attempts to stop teachers from making sexual overtures.

At Yale University, New Haven, Conn., five former women students are in the midst of a three-year battle now in the courts. The students claim the sexual harassment is a civil rights issue. This marks the first time sexual harassment has been put in that category.

Yale claims the charges are moot since a new grievance policy was adopted in 1979 and conditions that existed on campus in 1977 no longer exist. Now students who feel they have been sexually harassed can complain through the grievance channel.

Consider a report to the ASA from two sociologists at the University of California, Berkeley:

Researchers Donna J. Benson and Gregg E. Thompson said they found 30 percent of the female seniors there had been harassed by at least one male instructor while at Berkeley or another college.

They defined sexual harassment as "any unwanted sexual leers, suggestions, comments, or physical contact which (the student) finds objectionable."

It includes "verbal propositions, invitations for dates, touching, kissing, fondling, discus-

sions about personal problems, obsequious friendliness, and offers of high grades for sex."

"Women students learn that even simple friendliness and academic enthusiasm are often misinterpreted as an invitation for sexual advances," the researchers said.

"When such advances are rejected, faculty members often respond with such punishments as withdrawing intellectual support and encouragement previously given generously, sharp and often sarcastic criticism of work once praised, and assigning a lower grade than a student confidently estimated her work merited."

Do female professors harass male students sexually? Benson and Thompson say that happens but it's "insignificant" when compared to the practice by male teachers.

An informal poll by the Chronicle of Education drew these comments:

"It's rampant, absolutely rampant" — Jacqueline Gibbone, University of Virginia.

"It may be highlighting this issue will cause male teachers to become more cautious, less friendly, and less available to female students" — Marcia Millman, University of California at Santa Cruz.

"I think it's the trickiest issue in sexuality today" — Patricia MacCorquodale, University of Arizona.

Four killed in resort fire Sunday

United Press International
HOT SPRINGS, Ark. — A fire roared through low-income housing at the bottom of a mountain early Sunday in this Arkansas resort town, killing four people and injuring at least three, officials said.

Two brothers, ages 25 and 27, were killed, along with a 90-year-old man and a 25-year-old woman, officials said.

The woman's husband jumped from the second story of the burning apartment building and survived. He reportedly beckoned to her to jump, but she refused.

Officials said all residents of the housing had been accounted for and taken to a relief center. The cause of the fire has not been determined.

The blaze, whipped out of control by high winds, engulfed the old two-

story apartment building and six cottages, residents said. The buildings were at the base of West Mountain, and fire authorities said the blaze threatened to sweep up the side of the mountain until it was controlled about 5 a.m.

It apparently began about 2:45 a.m. Sunday, authorities said, but fire crews were not notified for about 40 minutes.

Attention A&M Faculty and Staff

Compare your ORP-TDA with



- Now there's a better way for you to plan for your financial future. The MFS/Nationwide Spectrum Annuity offers:
- No sales charge on purchase payments*
 - Nine investment options, including professionally managed money market, stock and bond portfolios plus a guaranteed interest and principal account
 - Transfers among the nine options at no charge
 - Deferred income taxes on earnings
 - Guarantee against loss for your beneficiaries if you die during accumulation period
 - A monthly income guaranteed payable for life

Then join us for a free seminar.

Space is limited, so please call **846-4352** today to make your reservations.

DON REISER
Financial Disciplines, Inc.
111 University Center
846-4352

Free prospectuses containing complete information on the MFS/Nationwide Spectrum Annuity and the MFS funds related to your investment objective, including all charges and expenses, will be distributed. They should be read carefully before investing or sending money.

*Withdrawals within the first two contract years and withdrawals in excess of 10% made during the following six contract years are subject to a 5% charge. There is no charge on withdrawals of purchase payments held for at least eight years.

Obesity research leads to hormone

United Press International
PHILADELPHIA — The dumpy lawyer gulping another chocolate-coated cherry or the portly businessman tucking away another plate of mashed potatoes may not consider themselves food junkies — but they might be.

Research by Temple University's Dr. David Margules indicates that a hormone called beta-endorphin, which acts like an opiate, may be loosely connected to obesity.

Margules said in a recent interview that beta-endorphin "lies dormant and is only called upon in special circumstances."

"It looks as if hunger and starvation can bring it out, and stress can bring it out," he said.

How the hormone fits in the chain of events awaits to be determined by research, said Margules, but apparently it is triggered by food consumed in response to stress or hunger.

It appears to be especially active in cultures where famines are prevalent.

"They feel that if they don't eat they will perish, which is a painful, psychological emotion," Margules said. "Famine is very threatening and painful, and you eat under this circumstance because it relieves that pain."

Margules said he suspects the food triggers the release of beta-

endorphin, the first natural opiate discovered in the body, which acts in a way morphine might.

"It will produce constipation. It will also slow down breathing. It will produce a passive, relaxed state," said Margules, who founded and heads the newly created National Obesity Research Foundation.

"Many of its actions help us to conserve energy so we're less likely to be active when this morphine-like hormone is working," he said.

Once the passive state is past, he said, "then we get withdrawal symptoms, and when it's gone we get more cravings — like alcohol."

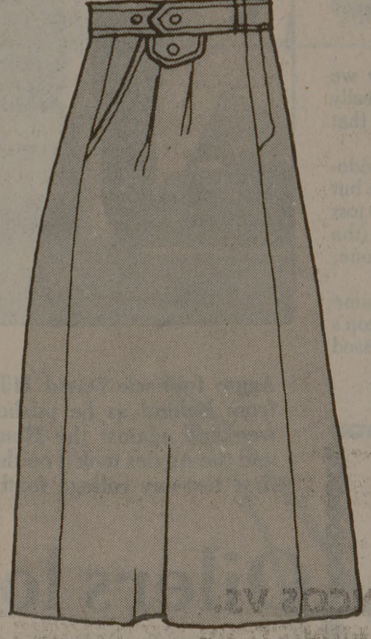
"We've known for many years that obese people talk about food as if it were some kind of drug, so we connected the two," he said.

In preliminary research on rats, Margules found a high incidence of beta-endorphin in obese animals. Naloxone, which counteracts the effects of morphine, stops mice from overeating. Action of the drug is shortlived and has not been tested on humans, he said.

Obesity, Margules said, is becoming a major health problem.

"There are 40 to 60 million Americans who are overweight. They spend \$10 billion on obesity treatments that fail and up to now there has been no national foundation devoted to obesity research," he said.

Corduroy Skirts



- slate blue
- forest green
- grey
- navy
- burgundy
- khaki

Originally 35⁰⁰
Now 28⁵⁰

shellenberger's
for her
Townshire... Up from Sears.

Research to give sheep longer life

United Press International
LONDON — As every shepherd knows, sheep tend to break some of their eight teeth while chomping through their rugged diet of grass in summer and frozen turnips or similar in the winter.

When this happens they also tend to break their mouths, and the next stop is usually the dinner table.

Adam Thomson, an Edinburgh dentist, believes he has perfected a simple device which enables the sheep to keep eating for twice the usual age of five or six at which their teeth generally start to go.

If they are able to continue to eat, they are able to continue to raise more lambs, he said. So a comparatively simple device could do a great deal to provide more chops and other lamb dishes for the national diet.

Thomson is the son of a hill farmer and knows sheep. He is also a dentist with a considerable practice among humans and has had experience of most of the experimental techniques — such as embedding false teeth in the jaw bone — now under test in various laboratories.

He was wondering about preventing broken mouths in sheep by resorting to the embedding method he came up with what seemed like a more practical idea. The sheep's teeth are all in the lower jaw. Why not, he thought, devise a splint that would attach to whatever teeth remained in the mouth and glue it in place using the new immensely powerful adhesives?

This would strengthen the mouth and save it from being broken. He tested the device on two valuable prize ewes and it worked. Examination of many other sheep indicated all adult sheep have mouths of three widths.

"All you have to do," Thomson said, "is choose the size, dab the glue on your splint, attach the splint to the teeth and hold it tightly in place for about 30 seconds. The whole procedure should take no more than a few minutes."

Student Floral Concessions
is selling
Aggie Mums
A tradition for nearly 40 years!
on sale in MSC: Tues.-Fri. 9:00-4:00
Free Corp delivery
Corp personnel please buy from dorm representative.

AM AGGIES!
Douglas Jewelry

10% AGGIE DISCOUNT
ON ALL MERCHANDISE
WITH STUDENT ID
(Cash Only Please)
We reserve the right to limit use of this privilege.
Downtown Bryan (212 N. Main)
and
Culpepper Plaza

DIETING?
Even though we do not prescribe diets, we make it possible for many to enjoy a nutritious meal while they follow their doctor's orders. You will be delighted with the wide selection of low calorie, sugar free and fat free foods in the Souper Salad Area, Sbis Dining Center Basement.

OPEN
Monday through Friday 10:45 AM-1:45 PM
QUALITY FIRST

MSC Cafeteria

Now Better Than Ever. You Will Be Pleased With These Carefully Prepared and Taste Tempting Foods. Each Daily Special Only \$2.13 Plus Tax. "Open Daily"
Dining: 11 A.M. to 1:30 P.M. — 4:00 P.M. to 7:00 P.M.

<p>MONDAY EVENING SPECIAL Salisbury Steak with Mushroom Gravy Whipped Potatoes Your Choice of One Vegetable Roll or Corn Bread and Butter Coffee or Tea</p>	<p>TUESDAY EVENING SPECIAL Mexican Fiesta Dinner Two Cheese and Onion Enchiladas w/chili Mexican Rice Patio Style Pinto Beans Tostadas Coffee or Tea One Corn Bread and Butter</p>	<p>WEDNESDAY EVENING SPECIAL Chicken Fried Steak w/cream Gravy Whipped Potatoes and Choice of one other Vegetable Roll or Corn Bread and Butter Coffee or Tea</p>
<p>THURSDAY EVENING SPECIAL Italian Candle Light Spaghetti Dinner SERVED WITH SPICED MEAT BALLS AND SAUCE Parmesan Cheese - Tossed Green Salad Choice of Salad Dressing - Hot Garlic Bread Tea or Coffee</p>		
<p>FRIDAY EVENING SPECIAL BREADED FISH FILET w/TARTAR SAUCE Cole Slaw Hush Puppies Choice of one vegetable Roll or Corn Bread & Butter Tea or Coffee</p>	<p>SATURDAY NOON and EVENING SPECIAL Yankee Pot Roast (Texas Salad) Mashed Potato w/ gravy Roll or Corn Bread & Butter Tea or Coffee</p>	<p>SUNDAY SPECIAL NOON and EVENING ROAST TURKEY DINNER Served with Cranberry Sauce Cornbread Dressing Roll or Corn Bread - Butter - Coffee or Tea Giblet Gravy And your choice of any One vegetable</p>

FOR YOUR PROTECTION OUR PERSONNEL HAVE HEALTH CARDS.

"Quality First"