

what's up

WEDNESDAY

COLLEGE REPUBLICANS: Will meet at 7:30 p.m. in 404 Rudder.
MSC BASEMENT: Will hold auditions for amateur talent. Anyone may sign up in 216 MSC.

NURSING SOCIETY: Will meet at 7:30 p.m. in 301 Physics.

A&M DEBATE CLUB: Will meet at 8 p.m. in 328 Academic.

MATH CLUB: Will meet at 7:30 p.m. in the third floor lounge of Milner Hall.

ASOCIACION DE ESTUDIANTES DE MEXICO: Llevara a cabo su primera reunion del semestre el dia 10 de Septiembre a las 7 p.m. in el salon 109 del edificio de Ciencias Militares (a un lado de Rudder Tower).

A&M JUGGLING ASSOCIATION: Will meet at 7:30 p.m. in 350 MSC.

POULTRY SCIENCE CLUB: Will meet at 7:30 p.m. in 100 Kleberg.

SOCIETY OF WOMEN ENGINEERS: Will meet at 7 p.m. in 103 Zachry.

HILLEL CLUB: Will hold Rosh Hashonah Services with Oneg Shabbat following at 8 p.m. in the Hillel Jewish Student Center.

'LORD OF THE FLIES': This adaptation of William Golding's strange and suspenseful story tells of a group of school children who find themselves stranded on a desolate island. Without adult guidance, they create a primitive social order that leads them to abandon their thin veneer of civilized behavior. The feature will be shown at 7:30 p.m. in Rudder Theater.

MSC TOWN HALL: Applications for freshmen and transfer students are available until 5 p.m. in the Town Hall cubicle, 216 MSC.

ICE CREAM SOCIAL: Alpha Lambda Delta and Pi Eta Sigma will meet at 7:30 p.m. in 230-230 MSC.

LIBRARY TOURS: Instructional tours of the Sterling C. Evans Library will begin at 9:00 a.m., 11:00 a.m. and 2 p.m.

CATHOLIC STUDENT ASSOCIATION: The Newman Club will meet at 7:30 p.m. at St. Mary's Student Center.

BETA ALPHA PSI: Will meet at 7 p.m. in the Barcelona party room.

GROMETS: Will meet at 8 p.m. in 139 MSC.

THURSDAY

TAMU FENCING CLUB: Will meet at 7 p.m. in 261 G. Rollie White.

MEDINA COUNTY HOMETOWN CLUB: Will meet to elect officers at 7:30 p.m. in 231 Physics.

TAMU MICROCOMPUTER CLUB: Will meet at 7 p.m. in 203 Zachry.

SOCIETY OF AUTOMOTIVE ENGINEERS: Will meet at 7:30 p.m. in 103 Zachry.

SOUTH LOUISIANA HOMETOWN CLUB: Will meet at 7 p.m. in 110 Military Sciences.

HILLEL CLUB: Will hold Rosh Hashonah Services at 10 a.m., 1 p.m. and 7 p.m. at the Hillel Jewish Student Center.

RENEWABLE NATURAL RESOURCE ASSOCIATION: Will meet at 7:30 p.m. on the second floor of the Animal Industries Bldg.

MSC OUTDOOR RECREATION COMMITTEE: Will meet at 7:30 p.m. in 601 Rudder.

LIBRARY TOURS: Instructional tours of the Sterling C. Evans Library will begin at 9:30 a.m. and 2 p.m.

'TIME AFTER TIME': Malcolm McDowell stars as H.C. Wells in this thriller about time travel. Jack the Ripper escapes to 1979 San Francisco and Wells must stop him before he kills again. The feature will be shown at 7:30 and 10 p.m. in Rudder Theater.

Editor quits over 'crazy' editorial

By DEBBIE NELSON
Battalion Staff

The editor of the Sam Houston State University student newspaper said he resigned Monday because of strife among staff members over a one-sentence editorial which read "Ronald Reagan is Crazy" in letters one inch high.

Editor Ed Lehr's editorial, which was surrounded by 15 inches of white space, appeared in Thursday's issue of the Houstonian, unsigned and boxed on the page.

Marcus Sandifer, interim editor since Lehr resigned, said, "A lot of people thought it was an ad."

The former Houstonian city editor now serving as editor said unsigned editorials are uncommon at the newspaper.

Another Lehr editorial in Tuesday's paper explained his resignation, though he did not retract his statement.

"I believed it the right thing to do. I still do. However right I think myself to have been, the editorial has caused damage to this paper, the staff and this university," the editorial said.

Although Lehr received many phone calls and letters from people angry about the editorial, he said he was not pressured to resign.

Lehr explained his Monday resignation: "The staff of the paper was split. The content (of the editorial) became a divisive thing. I didn't think the paper could continue."

Lehr said the Houstonian staff protested when hearing of his resignation, causing him to decide to withdraw it. But the request was refused by the journalism faculty advisers.

He said Tuesday, "I could have written a 500-word essay and talked in a calm voice and tried to persuade people. I might have raised a few eyebrows of Republicans."

"I didn't want that. I wanted to shout or scream as loud as I could."

A junior, Lehr was appointed to the editorial post in May, but started the job only last week. Lehr had published three issues of the paper before the controversial editorial appeared.

"We had a lot of good things planned.... I blew it, really," Lehr said.

Dairy Queen

GOOD MORNING!

Start your day with a delicious Country Morning Breakfast...

SERVED 7:00 a.m.-11:00 a.m.
Sunday 9:00 a.m.-11 a.m.

COLLEGE STATION DAIRY QUEEN
Texas Avenue South - Across from Motel "6"
693-4299

MSC AGGIE CINEMA

WILLIAM GOLDING'S

LORD OF THE FLIES

WEDNESDAY, SEPT. 8

7:30 P.M.

RUDDER THEATRE

\$1.00 WITH TAMU I.D.

ADVANCE TICKETS AVAILABLE MON.-FRI. 9 A.M.-5 P.M.
TICKETS ALSO AVAILABLE 45 MIN. BEFORE SHOWTIME

To live is to love
To love is to change
To change is to grow
To grow is to hurt
To hurt is to feel
To feel is to care
To care is to hope
To hope is to live.

James P. Simon



JOY UNIVERSITY LUTHERAN CHAPEL
315 N. Main
846-6687
Hubert Beck, Pastor

WEDNESDAY EVENING
CANDLELIGHT COMMUNION
10 P.M.
SUNDAY WORSHIP
SERVICES
9:15 AND 10:45 A.M.
FELLOWSHIP SUPPER 5 P.M.
HOLY COMMUNION
(FOLK SETTING) 7 P.M.

Bible Studies Available
Join us tomorrow evening (Sept. 11) at the Student Center for a hamburger fry 'get acquainted' evening, 7 p.m.

Why Tasco Saves You MONEY

SALE OF THE YEAR SAVE \$48 - \$132 on a set of 4 tires

SEPT. 8 THRU SEPT. 27

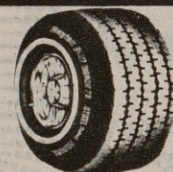
THE TASCO STORY

A family business owned and operated by Texas A&M graduates (Class of '76 and class of '78) with the finest new equipment available in order to bring you high quality service. We are a direct factory distributor and combine this with low overhead and a low profit margin to give you truly inflation stomping prices. Remember, we have a complete line of Dayton tires and a comfortable waiting room for YOU.

THE DAYTON STORY

The Dayton brand of tire is one of the finest quality tires produced today. It is made in the United State of America with rigid production controls and carefully selected materials. 40 successful years of marketing Dayton tires in the North has evolved this salesmanship: **High quality at a low price will sell itself.**

Thus, the Dayton company does no expensive advertising in order to keep down the price of their product and sell to you one of the finest quality tires according to Department of Transportation grades at one of the lowest prices possible.



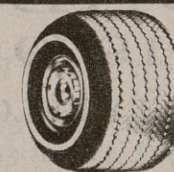
STEEL BELT RADIAL

Size	Sugg. Ret.	On Sale	F.E.T.
BR 78-13	67	50.84	2.02
DR78-14	72	54.63	2.33
ER78-14	76	57.15	2.48
FR78-14	78	58.80	2.48
GR78-14	85	63.77	2.58
HR78-14	90	67.68	2.81
FR78-15	81	60.93	2.57
GR78-15	87	65.40	2.75
HR78-15	90	67.72	2.93
LR78-15	96	72.40	3.11



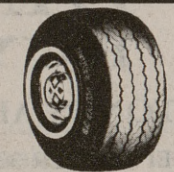
FIBERGLASS RADIAL

Size	Sugg. Ret.	On Sale	F.E.T.
155/80R13	53	38.42	1.47
AR78-13	55	40.02	1.72
BR78-13	60	41.44	1.87
DR78-14	61	44.08	2.03
ER78-14	63	45.70	2.19
FR78-14	66	47.52	2.35
GR78-14	69	49.64	2.52
FR78-15	68	48.88	2.51
GR78-15	72	51.63	2.64
HR78-15	76	54.75	2.77
LR78-15	81	58.24	3.07



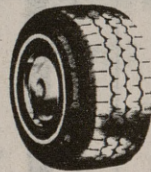
FIBERGLASS BELTED

Size	Sugg. Ret.	On Sale	F.E.T.
A78-13	43	31.54	1.76
C78-13	45	33.38	1.96
C78-14	48	35.06	2.03
E78-14	50	36.48	2.21
F78-14	52	37.96	2.37
G78-14	54	39.76	2.54
H78-14	60	44.03	2.79
G78-15	55	40.88	2.62
H78-15	61	45.10	2.84
J78-15	53	46.45	3.07
L78-15	65	47.66	3.13



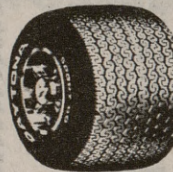
4 PLY POLYESTER

Size	Sugg. Ret.	On Sale	F.E.T.
A78-13	33	26.17	1.62
B78-13	35	27.44	1.77
D78-14	38	30.27	1.96
E78-14	39	30.91	2.12
F78-14	40	31.81	2.23
G78-14	42	33.34	2.38
H78-14	45	35.76	2.60
F78-15	42	32.81	2.31
G78-15	43	34.14	2.46
H78-15	46	36.34	2.66
L78-15	48	37.93	2.96



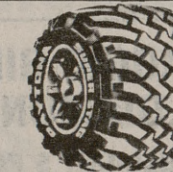
STEEL BELT RADIAL

Size	Sugg. Ret.	On Sale	F.E.T.
Blackwall	46	34.89	1.55
155R12	54	41.21	1.81
165R13	58	43.86	1.91
175R14	60	45.75	2.02
185R14	63	48.11	2.27
Whitewall	57	42.51	1.81
175R13	60	45.17	1.92
175R14	63	47.04	2.02
184R14	66	49.48	2.27
165R15	62	46.81	2.11



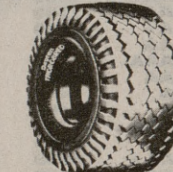
WIDE SERIES

Size	Sugg. Ret.	On Sale	F.E.T.
Sport 70	52	41.44	2.26
D70-14	57	45.33	2.56
F70-14	60	47.54	2.72
G70-15	62	48.74	2.78
H70-15	66	52.17	3.01
Sport 60	59	46.49	2.64
E60-14	55	51.05	2.99
G60-15	66	52.55	3.05
L60-15	77	60.89	3.69



MUD GRIPS

Size	Sugg. Ret.	On Sale	F.E.T.
N78-15	86	67.08	4.01
10-15	94	73.26	4.39
11-15	102	79.47	4.79
12-15	114	88.35	5.57
950-16.5	107	83.21	4.19
12-16.5	147	114.40	5.93



COMMERCIAL HAULER

Size	Sugg. Ret.	On Sale	F.E.T.
700-14	52	41.68	2.45
670-15	56	44.85	2.65
700-15	61	49.24	3.05
G78-15	69	54.04	3.18
H78-15	74	57.89	3.46
800-16 S	73	57.02	3.52
875-16 S	88	68.80	3.94
950-16 S	94	73.11	4.48
1000-16 S	100	77.78	4.59
Tube type			
750-15	72	57.82	3.65



Mounting & valve stem included

TASCO

3700 S. College

846-1912