

Rifle team aiming at championship

By TERRY DURAN

Campus Reporter
Once more gunning for the conference title, the champion Texas A&M University Rifle Team is "one of the unsung success stories here," said Maj. Douglas Veitch, the team's sponsor.

Veitch said that the 16-member team hopes to be invited to the national championships this year. Texas A&M has consistently been ranked in the top 20 colleges nationwide for the past 30 or 40 years, he said.

The team has won all five meets it has attended this year.

"They're doing exceedingly well," Veitch said. "They beat t.u. on the rifle range the same day we beat them on the football field."

The meet that determines national ranking, the sectionals, is coming up March 1. If Texas A&M fires in the top 10 there, the team will be invited to the National Invitational meet at Tennessee Tech in April.

Captain Mike Winzeler said the team has improved greatly the last four years.

"We're really pleased. We definitely have the capability to get to the nationals; we can do it if we go up there with the right frame of mind," he said.

The senior industrial engineering major said he practices six to nine hours a week.

The team is split into four four-man teams. Three of the 16 members are women; seven are the Corps of Cadets, including Winzeler.

The rifle team is a member of the Southwest Rifle Association (SWRA), which includes the University of Texas, the University of Texas at Arlington, Rice, Trinity, St. Mary's, Hardin-Simmons, Stephen F. Austin, Sam Houston State, Prairie View A&M, Texas A&I, and

Nichols State University in Thibodaux, La.

Texas Christian University and the University of Houston were members of the SWRA until the mid-70s, Veitch said, but Houston's team "went downhill" and TCU stepped out of the group to go independent.

"It was a shame," Veitch said. "Up until that time the SWRA was very competitive; no team was clearly dominant."

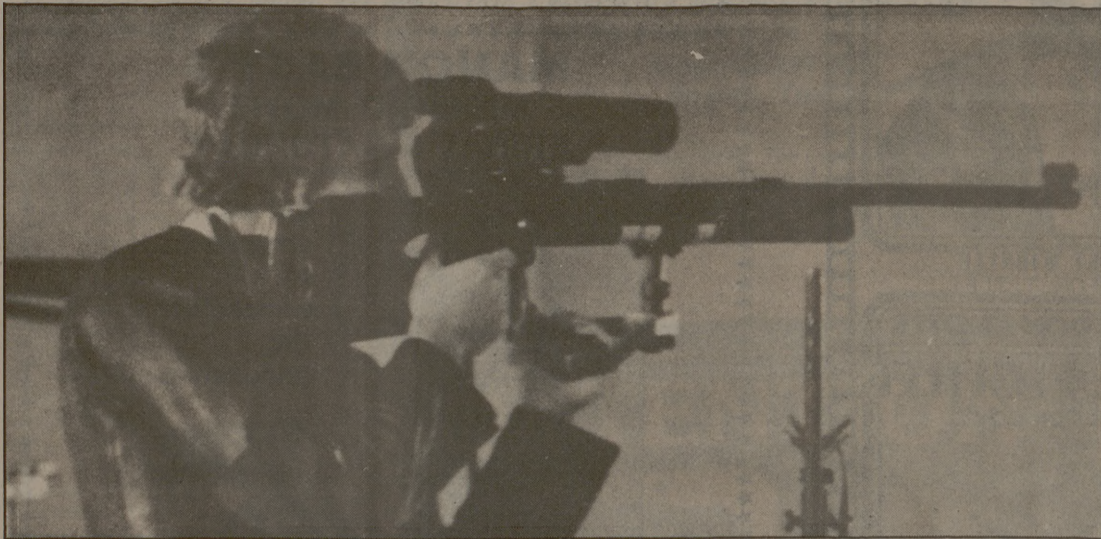
"Since then, A&M has dominated the conference," he said.

A new requirement for the nationals this year is the use of pellet or air rifles, in addition to the usual competition with the .22-caliber rifles. The air rifles weigh about seven pounds, Winzeler said.

The .22-caliber rifles cost anywhere from \$800 to \$1,000, Winzeler said, depending on the accessories used. The Texas A&M team uses the German-made Anschütz 1413 Supermatch, which weighs about 15 lbs.

A meet involves firing from three positions: prone, kneeling and standing. The shooters fire at four sheets of 10 targets apiece from each position.

Winzeler said he averages about 1,080 per match. He said his high



A member of the Texas A&M Rifle Team practices for an upcoming match. The rifle range is located in the basement of the Military Science Building. Photo by Brian Blalock

score this year has been 1,106; the national champion, Tennessee Tech, average about 1,140 per shooter, he said.

The rifle team's next competition is the Mardi Gras meet Feb. 15-17 at Nichols State, about 30 miles south of New Orleans.

Foreign tax act unfair: Bentsen

United Press International
WASHINGTON — Tax disadvantages for American businessmen working abroad should be eliminated and the Foreign Corrupt Practices Act revised to stop hindering exports, Sen. Lloyd Bentsen said Wednesday.

"The United States is the only major trading nation to tax the income of its businessmen abroad," Bentsen, D-Texas, said, in a senate floor speech. It now costs an American firm \$100,000 a year to station an American with a \$32,000 base salary in East Asia, he explained.

FORT SHILOH STEAK HOUSE

A UNIQUE EXPERIENCE IN GOOD FOOD, FUN AND FRIENDS.

2528 S. Texas College Station

ARE YOU INTERESTED IN STUDYING ABROAD?
WORKING IN EUROPE FOR THE SUMMER?
TRAVELING & GETTING TO KNOW ANOTHER CULTURE?

The Study Abroad Office is sponsoring a seminar on Study/Travel Abroad on Monday, February 4, 1980, 7:30 p.m., Room 206 MSC. Topics discussed will include: study abroad opportunities, student tours, international student cards, work permits, train passes, travel bargains, passport applications, cheap hotels and youth hostel cards etc.

FORMAL FOR AN EVENING.

TUXEDO SALES & RENTALS

formals

111 College Main
846-1021 846-4116

Now Better Than Ever. You Will Be Pleased With These Carefully Prepared and Taste Tempting Foods. Each Daily Special Only \$1.99 Plus Tax. "Open Daily"

Dining: 11 A.M. to 1:30 P.M. — 4:00 P.M. to 7:00 P.M.

<p style="text-align: center; font-weight: bold;">MONDAY EVENING SPECIAL</p> <p>Salisbury Steak with Mushroom Gravy Whipped Potatoes Your Choice of One Vegetable Roll or Corn Bread and Butter Coffee or Tea</p>	<p style="text-align: center; font-weight: bold;">TUESDAY EVENING SPECIAL</p> <p>Mexican Fiesta Dinner Two Cheese and Onion Enchiladas w/chili Mexican Rice Patio Style Pinto Beans Tostadas Coffee or Tea One Corn Bread and Butter</p>	<p style="text-align: center; font-weight: bold;">WEDNESDAY EVENING SPECIAL</p> <p>Chicken Fried Steak w/cream Gravy Whipped Potatoes and Choice of one other Vegetable Roll or Corn Bread and Butter Coffee or Tea</p>
<p style="font-weight: bold;">THURSDAY EVENING SPECIAL</p> <p>Italian Candle Light Spaghetti Dinner SERVED WITH SPICED MEAT BALLS AND SAUCE Parmesan Cheese - Tossed Green Salad Choice of Salad Dressing - Hot Garlic Bread Tea or Coffee</p>		
<p style="text-align: center; font-weight: bold;">FRIDAY EVENING SPECIAL</p> <p>BREADED FISH FILET w/TARTAR SAUCE Cole Slaw Hush Puppies Choice of one vegetable Roll or Corn Bread & Butter Tea or Coffee</p>	<p style="text-align: center; font-weight: bold;">SATURDAY NOON and EVENING SPECIAL</p> <p>Yankee Pot Roast (Texas Style) Tossed Salad Mashed Potato w/ gravy Roll or Corn Bread & Butter Tea or Coffee "Quality First"</p>	<p style="text-align: center; font-weight: bold;">SUNDAY SPECIAL NOON and EVENING</p> <p>ROAST TURKEY DINNER Served with Cranberry Sauce Cornbread Dressing Roll or Corn Bread - Butter - Coffee or Tea Giblet Gravy And your choice of any One vegetable</p>

DIETING?

Even though we do not prescribe diets, we make it possible for many to enjoy a nutritious meal while they follow their doctor's orders. You will be delighted with the wide selection of low calorie, sugar free and fat free foods in the Souper Salad Area, Sbis Dining Center Basement.

OPEN

Monday through Friday 10:45 AM-1:45 PM

QUALITY FIRST

Peace Lutheran Church

Meets weekly in the A&M Consolidated School Cafeteria. (Enter off Welch Street)

STUDY 9:30
WORSHIP 10:45

Stan Sultemeier
693-1047

A fellowship of believers that strives to bring people into touch with one another, themselves and God.

The Longest Happy Hour in Town

(4 till 7)

Drinks two for the price of one Ladies bring this coupon good for one free drink courtesy of

The Ultimate Disco Extravaganza

SPECTRUM DISCO

New Cover Charge Friday and Saturday
Guys \$2.00 Ladies \$1.00

Across from Campus in Skaggs Shopping Center

\$249

Sound Guard Record Cleaning Kit

\$4.95

KENWOOD

LSK-200...8-INCH, 2-WAY SPEAKER SYSTEM

discwasher

Refill \$1.50

Technics

SA-200 FM/AM stereo receiver. 25 watts per channel, minimum RMS into 8 ohms, from 20-20,000 Hz, with no more than 0.04% total harmonic distortion.

SAVE OVER 40%

REG. \$425

RS-M11

Front-loading, vertical-hold cassette deck with FL peak meters and Dolby noise reduction. FL meters give accurate peak indication within 0.1 dB at 0 VU.

\$99

SL-B2 Belt-drive semi-automatic turntable. FG ("frequency generator") servo-controlled DC motor. Electronic speed switching. Wow and flutter 0.045% WRMS. Rumble -70 dB DIN B.

\$169

SALE ENDS SAT.

SOUND CENTER

IN-STORE FINANCING NOW AVAILABLE PLUS LAYAWAY PROGRAM

master charge THE INTERBANK CARD VISA

3820 TEXAS AVE. Less Than a Mile From Campus 846-1735