



Reporters Robert MacNeil, Jim Lehrer and Charlayne Hunter-Gault, of the MacNeil/Lehrer Report, offer an uninterrupted half-hour discussion on a single major issue or event each evening on PBS Channel 15.

PBS HIGHLIGHTS

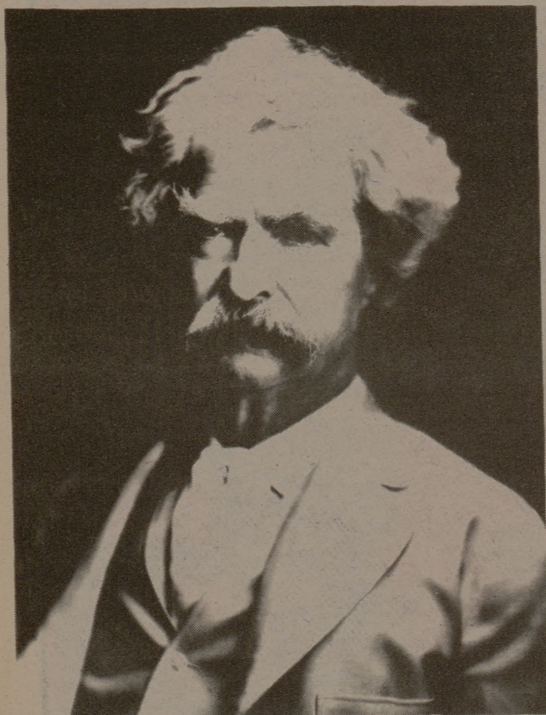
The Public Broadcasting Service, PBS, is bringing 14 new series to public television this season, several which are starting this coming week.

The local PBS station is KAMU. On the UHF frequency, it is on channel 15. For viewers with cable, it is on UHF channel 12.

Presently KAMU starts broadcasting at 2:30 p.m. each day. Starting Feb. 15, the station will start broadcasting at 7:30 p.m.

Anyone wanting a schedule of programs for the coming month can call KAMU at 845-5611 and one will be mailed free of charge.

The American Short Story — On Feb. 4, "The American Short Story" series will begin, presenting eight new dramatizations of short pieces of fiction by American authors. Included are such authors as Willa Cather, James Thurber, Nathaniel Hawthorne, and Mark Twain. Starting at 9 p.m., the eight



Writer Mark Twain is among those whose works are dramatized in the second season of "The American Short Story," a series of programs depicting various short stories by selected American authors.

works will combine with nine others from the previous season and be shown successively for 13 weeks.

The first program will be "The Golden Honey-moon" by Ring Lardner, starring Teresa Wright and James Whitmore.

The Second program of the series will be "Paul's Case" by Willa Cather, starring Eric Roberts. It will air at 9 p.m., Feb. 11.

Sneak Preview — A consumers' guide to movies, Sneak Previews is hosted by Roger Ebert and Gene Siskel, and is aired locally every other Sunday at 4 p.m.

The program features full length scenes from six to eight major motion pictures each week, along with upcoming premieres of major motion pictures on television.

Ebert is a film critic for the Chicago Sun-Times; Siskel is a film critic for the Chicago Tribune.

Mystery — Gene Shalit will host a "whodunit suspense" show called "Mystery", premiering Feb. 5 at 8 p.m. The 90-minute series, showing for 15 weeks, will offer a variety of subjects and themes ranging from Victorian sleuths to contemporary detectives.

The first program of the series is "She Fell Among Thieves," adapted from a Dornford Yates novel and starring Eileen Atkins, Malcolm McDowell and Michael Jayston.

The MacNeil/Lehrer Report — A different type of newscast, The MacNeil/Lehrer Report offers a full half-hour discussion on one single major issue each night. Guests have included President Jimmy Carter, Iran's Ayatollah Khomeini, China's Vice Premier Deng Xiaoping. The aim of the series is to interpret the news through material contributed from local public television stations across the country and by international news organizations.

National Geographic Special — "Mysteries of the Mind" looks at recent research done on the mind of man. The film talks about sleep and dreaming, acupuncture, hypnosis, biofeedback and brain capabilities. Airing locally on Monday, Feb. 4 at 7 p.m., the program is hosted by E. G. Marshall.

Shakespeare — PBS will start its second Shakespeare season with the showing of "Twelfth Night" on Feb. 27 at 7 p.m. The next program will be Richard II, airing at 7 p.m. March 19.

Tartuffe — On Saturday, Feb. 9 from 8-10 p.m., "Great Performances" offers a special presentation of Molière's "Tartuffe." A comedy about a scoundrel who works his way into the home of a rich man in order to get his money, it stars Donald Moffat, Tammie Grimes, Geraldine Fitzgerald, Patricia Elliot and Stefan Gierasch.

COLLAGE

'Sniper' just playing clarinet

... An outdoor clarinetist attracted quite a bit of attention at the University of Southern California recently, but it wasn't his music that drew the crowd. The male student was playing his clarinet atop a campus building, unaware that an anonymous tipster had informed the Los Angeles Police Department that a man with a rifle had been spotted on a USC rooftop. The LAPD dispatched a helicopter, and the University Security office also launched a search, but they succeeded only in drawing a crowd to the area before deciding the sniper report was a hoax. The false report could have had more serious consequences, the campus security chief admitted. "What if officers hadn't been able to tell the student was just playing a clarinet?" he said. — *Collegiate Headlines*

Age record set in fraternity

... The founder of an internationally famous antique gun supply house didn't let his age, 59, stop him from getting the college education he dropped to fight in World War II, or from having some fun along the way. Kirkland recently became the oldest Alpha Tau Omega pledge in the history of the national fraternity, when he joined at the University of Tennessee-Martin. Like other pledges, Kirkland performs menial chores at the ATO house, but unlike other pledges, he doesn't climb on roofs or participate in rope-pulling contests. Nor does he date co-eds, but that's more in deference to his wife than his age. — *Collegiate Headlines*



Ads used to confess crimes

... Those who break the law at Washington State University are often sentenced to confess to their crimes in newspaper ads. The cost of the ad is then deducted from the fine levied against bookstore shoplifters or vandals. The ads don't have to be signed, and some people, including the student newspaper editor, don't believe they serve as a deterrent to further crime. — *Collegiate Headlines*

Student finds worm in food

... Insects discovered in five containers of spice mix used to make enchiladas at a Texas Tech University cafeteria were identified by the State Health Department as cigarette beetles. According to Environmental Health Specialist Joel Goddard, the beetles live mainly in the United States and southern Canada, and eat a wide range of foods including tobacco, cocoa beans, wax products and dog food. Investigations into the mix was called for after a dorm resident found a worm in her enchiladas.

FOCUS

THE BATTALION

Policy: Focus will accept any stories, drawings or photographs that are submitted for publication, although the decision to publish lies solely with the editor. Pieces submitted, printed or not, will be returned upon request. Deadline is 5 p.m. the Thursday before publication.

Contributing to this issue: Rusty Cawley, Lee Roy Leschper Jr., Andy Williams and Doug Graham.

Editor: Rhonda Watters

On the Cover: Playboy photographer David Chan visited the Texas A&M campus to interview women for a "Girls of the Southwest Conference" picture spread planned for an upcoming Playboy issue. For an account of his interviews and more pictures, see page 3. Photos by Lee Roy Leschper.