

Prime interest hits a high of 15.5 percent

United Press International
NEW YORK — Chase Manhattan Bank Wednesday raised its prime lending rate a quarter point to a record 15.5 percent, signalling another

Dodge displays electric car

United Press International
DETROIT — The newest electric car, a converted Dodge Omni with a 50-mile range and top speed of 60 mph, was unveiled Wednesday at the Michigan Energy Expo.

The vehicle, built by Jet Industries Inc. of Austin, features a General Electric propulsion system and carries a base price of \$12,271.

Promoters said the attractive, high-performance car was developed under the Department of Energy's electric vehicle program.

round of interest rate increases in the offing for consumers.

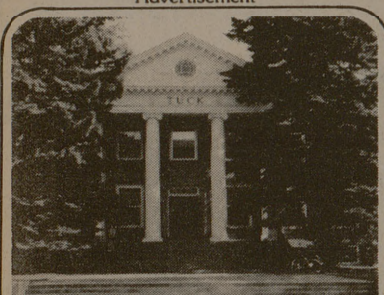
Chase, the nation's third largest bank, was the first to move to the higher prime that now stands 4 full percentage points above the June level.

The prime rate applies directly only to borrowing by the top-rated corporate borrowers, but the trend in the prime affects all lending rates, including those on consumer loans and mortgages. Usury laws may soften the blow for consumers in some states.

Ever-increasing interest rates

have made banks reluctant to lend and each hike further tightens the flow of credit. At the same time, consumers have become increasingly anxious to borrow as a hedge against inflation since they will repay loans in cheaper dollars.

That was reflected in government figures released Tuesday showing consumer installment credit soared a record \$4.45 billion in September. The September statistics preceded the Federal Reserve Board's series of credit-tightening moves on Oct. 6 that has led to the most recent round of interest rate hikes.



TUCK SCHOOL Case vs. Theory

It is generally agreed that the overall objective of an MBA education is to prepare students for responsible careers as managers. However, the question of which methods a school should use to achieve this objective continues to arouse discussion and debate. For some academicians and many practitioners, the answer is to give students a thorough understanding of current business practices and a massive exposure to practice in making management decisions in both real and simulated environments. For others, particularly some academicians, the objective is to cram students full of skills, techniques, theories, and principles. Indeed, much of the discussion among academicians and practitioners has taken place in terms of these two polar views of how a school ought to prepare people for careers in management.

For Tuck, however, the argument of theory vs. practice involves a false dichotomy. The School believes that both are important and must be a part of a successful program. Theories, tools, and principles are vital components of an MBA curriculum. As change erodes existing practices and builds up new and different challenges, nothing is more practical or relevant than sound theory. But theory by itself is not enough. The hallmark of the effective manager is to be able to apply theory in ways that lead to sound judgments and decisions.

Next edition: Who Attends Tuck?

Please send a bulletin and application materials for Tuck School to:

Name (please print) _____
Address _____
City _____
State _____ Zip _____
College _____ Degree Date _____
Director of Admissions
Amos Tuck School of
Business Administration
Dartmouth College
Hanover, NH 03755

A representative of Tuck School will be on campus Saturday, November 10, 1979. MCS MBA / Law Day, Memorial Student Center.

SUPER GUITARS, SUPER LOW PRICES



Reg. 299.00
Sale 209⁰⁰

MODEL 5014 ALVAREZ
A good all purpose guitar with well balanced tone. One piece back and side or rare Oboncol mahogany. Top is white spruce with herringbone inlay around sound hole. Celluloid bound top and back. Nato mahogany neck has adjustable rod with "U" channel; speed satin finish for greater playing ease. Fingerboard is rosewood. Jacaranda-faced head-piece, individual, chrome, covered machine heads.



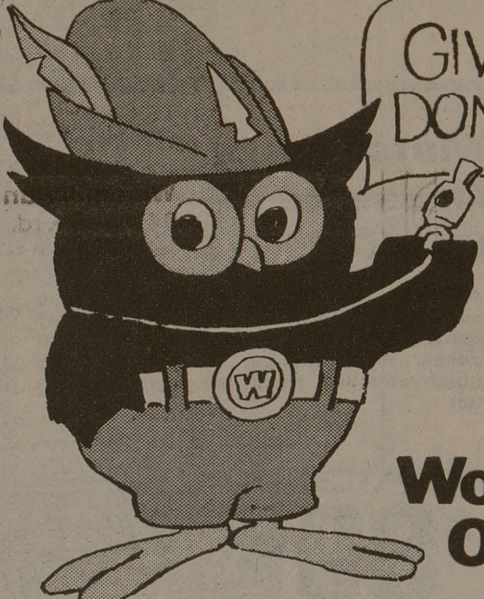
Reg. 199.00
Sale 139⁰⁰

Layaway
Monthly Terms

Keyboard Center

MANOR EAST Mall
Bryan • 779-7080
Randy Stuart, Owner

Open 6 Days Til 6 PM



**GIVE A HOOT!
DON'T POLLUTE**

Woodsy Owl

What's up at Texas A&M

Thursday

CONCERT AND RECEPTION: Will honor Chancellor and Mrs. Frank W.R. Hubert. Concert will be in the Rudder Auditorium at 7:30 p.m.; reception will be from 9-11 p.m. in Room 224 of the MSC.

CLASS OF '80: Will be selling Elephant T-shirts this week and next in the MSC.

RISK TOURNAMENT: MSC Recreation/Gromets will sponsor a risk tournament today and tomorrow in the MSC Student Lounge, from 11 a.m. to 2 p.m. this week in the main hall of the MSC.

"THE TIME MACHINE" A turn-of-the-century scientist invents a time machine in this 1960 film based on the H.C. Wells story. Will be shown at 8 and 10:30 p.m. in Room 601, Rudder. Admission — 75 cents. (C)

LIBRARY SEMINAR: The Library's Reference Department will sponsor two seminars on "How to Use Tax Materials" from 10:30 a.m. to noon and from 1:30-3 p.m.

EMERGENCY CARE TEAM: A skills review session and familiarization with the new university ambulance will be held at 7:30 p.m. in the Beutal Health Center Cafeteria.

CIRCLE K: Will meet at 6:30 p.m. in Room 302, Rudder.

SOCIETY OF BLACK ENGINEERS: Will meet at 7:30 p.m. in Room 301, Rudder to discuss "The Aggie Professional after Graduation."

BACKPACKING SEMINAR II: The MSC Outdoor Recreation Committee will present an adventure backpacking seminar at 7:30 p.m. in Room 401, Rudder.

GUATEMALAN STUDENT ASSOCIATION: Will meet and elect a chairman at 7 p.m. in Room 404, Rudder. Everyone urged to attend.

PEACE CORPS: Will show the film "The Toughest Job You'll Ever Love" at 2:15 and 3:15 p.m. in Room 300, Agriculture Building.

PHI SIGMA SOCIETY: The film "Wild America" will be shown at 7:30 p.m. in Room 701, Rudder.

TAMU ROADRUNNERS: Will meet on the steps of G. Rollie White at 5 p.m. for a Fun Run. All runners are invited.

AMERICAN HUMANICS: The American Humanics Student Association will sponsor a "Facility Planning Workshop" at 6 p.m. in Room 607, Rudder. David Diehr, General Director of the Waco YMCA, will speak.

FENCING CLUB: Will meet and finalize plans for the Dallas Open at 7 p.m. in Room 261, G. Rollie White.

RACQUETBALL DOUBLES TOURNAMENT: Today is the last day to enter tomorrow's Club Doubles Tournament. Entry forms are available in the intramural office. Everyone welcome.

RESIDENCE HALL ASSOCIATION: Will have a general meeting at 7 p.m. in Room 100, HECC.

CHRISTIAN SCIENCE ORGANIZATION: Will meet at 7:15 p.m. in Room 141, MSC.

Friday

"EVERY WHICH WAY BUT LOOSE": Clint Eastwood stars a truck driver who drives across the Southwest in search of a lost love. Will be shown tonight and tomorrow at 8 p.m. in Rudder Auditorium. Admission — \$1.25. (PG)

"BOYS IN COMPANY C": This entertaining film revolves around raw Marine recruits and the vicissitudes of the Vietnam War. Will be shown tonight and tomorrow at midnight in Rudder Theater. Admission — \$1. (R)

SPORTS CAR CLUB: Shelby American automobile enthusiasts caravan to Waco for the third annual meet. Caravan will be Zachry parking lot at 5 p.m.

RISK TOURNAMENT: MSC Recreation/Gromets will sponsor risk tournament today and tomorrow in the MSC Student Lounge. First round is at 7:30 p.m., and final rounds will be Saturday. Please bring your Risk games.

Saturday

"EVERY WHICH WAY BUT LOOSE": Clint Eastwood stars a truck driver who drives across the Southwest in search of a lost love. Will be shown at 8 p.m. in Rudder Auditorium. Admission — \$1.25. (PG)

"BOYS IN COMPANY C": This entertaining film revolves around raw Marine recruits and the vicissitudes of the Vietnam War. Will be shown at midnight in Rudder Theater. Admission — \$1. (R)

HORSEMANSHIP CLINIC: The Horsemen's Association will sponsor a special student's horsemanship clinic 8 a.m. to noon at the TAMU Horse Center. Volunteers are needed to help happy children enjoy horses.

BENEFIT HORSE SHOW: Saddle & Siroin will sponsor a horse show at 9 a.m. at the Equestrian Center on FM 2818. English and Western riders will compete. The \$3 entry fee will benefit Brazos Valley Rehabilitation Center.

SURF CLUB: Will host a NSSA/Gulf contest with other universities and high schools competing at 8 a.m. on the Freeport Pier.

RACQUETBALL TOURNAMENT: The Racquetball Club will sponsor a club Doubles Tournament at 6 p.m. in the DeWare Field House.

VOLLEYBALL: The men's team will host Rice, Southwest Texas State, and University of Houston teams and three teams from the University of Texas in an all-day volleyball tournament. The match begins 8:30 a.m. upstairs in G. Rollie White.

HILLEL FOUNDATION: Will present "Issues 80: The Jewish Student on Campus" from noon to 5:30 p.m. in Rudder Tower.

DEADLINE: Last day to register for the MSC MBA/Law Day. Go to Room 221, MSC.

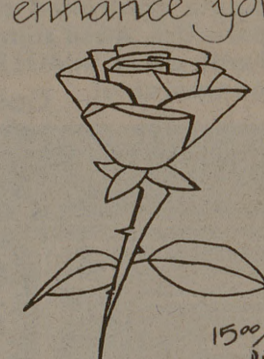
Sunday

"ICE CASTLES": Robbie Benson and Lynn-Holly Johnson star in a sentimental love story of a blind ice-skater destined to go to the Olympics and her boyfriend who encourages her to fulfill her dream. Will be shown at 8 p.m. in Rudder Theater. Admission — \$1.25. (PG)

Formals

Now at
Northgate!


enhance your relationship...



House of Roses

15⁰⁰/doz. (free delivery)
call 846-8386 or 846-8422

Action Speaks Louder than Words



**BIOLOGY
ZOOLOGY
GRADUATES**

Walt Ogradnik
PEACE CORPS REPRESENTATIVE
Agriculture Bldg. 103-B
College Station, TX 77843
Telephone (713) 845-2116 Ext. 13

For Work in Fisheries

IN THE PEACE CORPS

A THANKSGIVING MEAL

Sponsored by:

ALPHA PHI OMEGA

BAPTIST STUDENT UNION

BREAD FOR THE WORLD

CANTERBURY ASSOCIATION

HILLEL

LUTHERAN STUDENT MOVEMENT

METHODIST STUDENT MOVEMENT

NEWMAN ASSOCIATION

OFF-CAMPUS AGGIES

STUDENT Y

UNITED CAMPUS

MINISTRIES

A

Thanksgiving

Pyramid of Plenty

Food for the Underprivileged

COLLECTING CANNED GOODS,

CLOTHING AND DONATIONS TO

BUY THANKSGIVING TURKEYS AT:

SAFEWAY IN CULPEPPER PLAZA

PIGGLY WIGGLY BY K-MART

ON SAT., NOV. 10 FROM 10-6, ON

SUN., NOV. 11 AT LOCAL CHUR-

CHES DURING SERVICES, AND IN

THE FIRST FLOOR OF THE

MSC ON MON.-WED.,

NOV. 12-14 FROM 9-4.

From the Aggies to the Needy Families of Bryan-College Station

NOW OPEN!

THE CLEAN MACHINE WASHATERIA

112 Nagle (Inside Bus Station)

SPECIAL INTRODUCTORY OFFER:

DRY CLOTHES FREE!
(with wash)

WAS 'N FOLD SERVICE 20c LB.