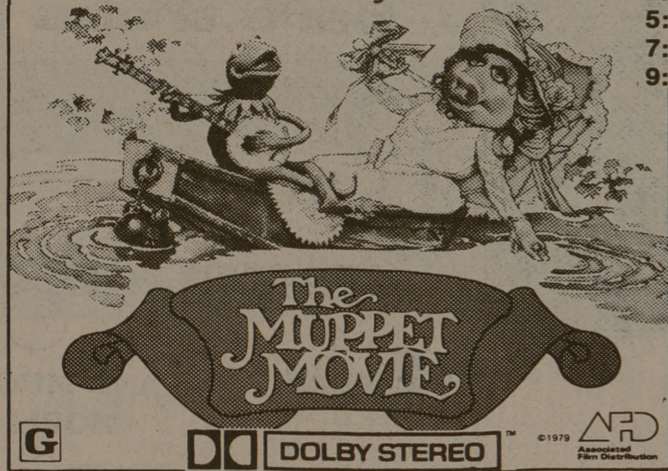


MANOR EAST 3
MANOR EAST MALL
823-8300

ONE DOLLAR OFF REGULAR ADULT ADMISSION WITH CURRENT TAMU STUDENT I.D. WHICH MUST BE PRESENTED WHEN TICKETS ARE PURCHASED.

More Entertaining Than Humanly Possible!

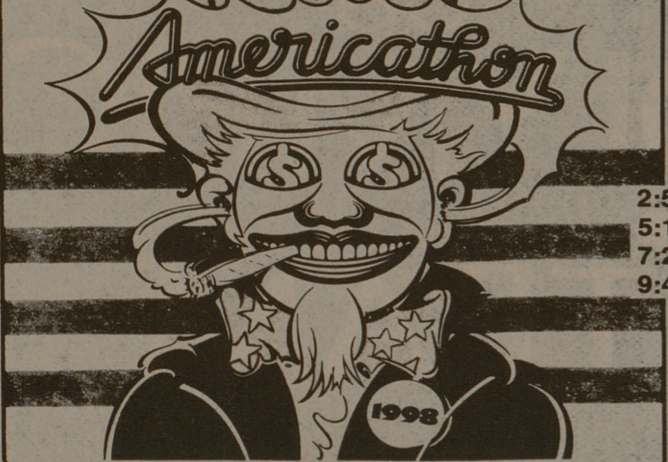


2:45
5:00
7:20
9:35

G **DOLBY STEREO**

The MUPPET MOVIE

THE COMEDY WITH NO RESPECT.



2:50
5:10
7:25
9:40

AMERICATHON
Starring HARVEY KORMAN, FRED WILLARD, PETER HEGERT, ZANE BIZBY, NANCY MORGAN, and JOHN RITTER as the President. Co-Mentors RICHARD SCHAAL. Special Guest Appearance by ELVIS COSTELLO. Chief Dan GEORGE, JAY LENO, PETER MARSHALL, MEAT LOAF, and GEORGE CARLIN as plus members. Music Score by TOM SCOTT. Executive Producer ED ROSEN. Producer JOE ROTH. Adapted by PHILIP PROCTOR & PETER BERGMAN. Based on a play by PHILIP PROCTOR & PETER BERGMAN. Screenplay by NEEL ISRAEL, MICHAEL WISLITZ, MONGA JOHNSON. Directed by NEEL ISRAEL. Prints by TECHNICOLOR. With Songs by EDDIE MONEY, THE BEACH BOYS, ELVIS COSTELLO and NICK LOVINO.

DOLBY STEREO

You don't know anything about pro football until you see —



2:30
4:50
7:15
9:45

NORTH DALLAS FORTY
"The toughest football film ever."
— Joel Siegel, ABC-TV
PARAMOUNT PICTURES PRESENTS A FRANK YABLANS PRODUCTION A TED KOCHETZ FROM NICK NOLTE "NORTH DALLAS FORTY" MAC DOUGLAS CHARLES BURNING JOHN HODSON BO SVANASON EXECUTIVE PRODUCER JACK B. BRONSTEIN BASED UPON THE NOVEL BY PETER GIM. SCREENPLAY BY FRANK YABLANS & TED KOCHETZ AND PETER GIM. PRODUCED BY FRANK YABLANS DIRECTED BY TED KOCHETZ. READ THE BEST SELLING NOVEL PAPERBACK A PARAMOUNT PICTURE.

SKYWAY TWIN DRIVE-IN
2000 E. 29th
822-3300
WEST



BUTCH & SUNDANCE
THE EARLY DAYS

PLUS LUCKY LADY EAST



STAR WARS
PLUS LASER BLAST

campus

Aggies making their own movies

By CHERYL CESSNA
Battalion Reporter

That motion picture production class you've been looking for in the catalog may have something to take its place — the new TAMU Cinema Lab.

The lab, in Room 122 of the Animal Husbandry Pavilion, is designed to give students the chance to experiment in workshops on individual projects, as well as to get involved with larger group production, said Eric Schulte, student director.

"The lab will also be set up as a general film service facility, offering

assistance to all departments on campus in the production of research documentaries and educational films."

Schulte, a junior in engineering design graphics, said the lab was founded jointly by the departments of Psychology and Engineering Design Graphics, and has been functioning since April using \$300 University Research Mini-Grant.

"We've recently applied to the Texas Commission on the Arts and Humanities for another mini-grant to produce a human interest documentary film about a local artist, James Harvey Johnson," he

said.

"Johnson is an interesting subject, especially in this area, because he graduated from A&M as a veterinarian and then did a complete turn-about. Now he paints pictures of animals instead of operating on them."

Schulte said the group of 12 members is trying to become an official student program in order to receive further funding from the Student Organizations Board.

Future plans include a promotional film for the Corps of Cadets that will use an animated version of "Cadet Slouch" as nar-

ated by Johnson. "We're trying to get some Corps people involved in this, so we can represent things as they really are."

Schulte said the lab's equipment includes a Bolex 16mm camera, a FaxCo animation stand, animation drawing tables and an editing bench equipped with a Moviola viewing screen, sound editor and hot splicer.

Most of the equipment was supplied by the Department of Psychology, said Dr. Rand Evans, department head.

"The equipment has been in this department for some time. It was

CAMPUS THEATRE
210 UNIVERSITY DR. 846-6512
ADMISSION: ADULTS \$2.50 STUDENTS \$1.50
MUST BE ACCOMPANIED BY TAMU STUDENT I.D.

BACK BY POPULAR DEMAND

ROCKY II

ROBERT CHARTOFF-IRWIN WINKLER PRODUCTION
SYLVESTER STALLONE "ROCKY II" TALIA SHIRE BURT YOUNG
CARL WEATHERS CAROL BURGESS MEREDITH BILL CONTI
BILL BUTLER IRWIN WINKLER ROBERT CHARTOFF
SYLVESTER STALLONE United Artists

7:35-9:45

MIDNIGHT MOVIE
FRIDAY — Alice's Restaurant
SATURDAY — Rocky Horror Picture Show

MANOR EAST 3
MANOR EAST MALL 823-8300

MIDNIGHT SHOW
TICKETS ON SALE AT 10:30
PLENTY OF PARKING
FRI. AT 12:30
SAT. AT 12:00

Walk into the incredible true experience of Billy Hayes. And bring all the courage you can.

Midnight Express

COLUMBIA PICTURES PRESENTS A CASABLANCA FILMS PRODUCTION
An ALAN PARKER Film MIDNIGHT EXPRESS
Executive Producer PETER GUBER Screenplay by OLIVER STONE Produced by ALAN MARSHALL and DAVID PUTTNAM Directed by ALAN PARKER Music by GIORGIO MORODER
Based on the true story of Billy Hayes from the book "Midnight Express" by BRUCE WILSON and MALCOLM BECKETT. Based on the FRANCIS & THOMAS BOOK.

MANOR EAST 2
3rd BIG WEEK

HALLOWEEN

The Night He Came Home!

PARAMOUNT METROCOLOR A COMPASS INTERNATIONAL RELEASE **R RESTRICTED**

Routes confused, distant

Buses pick up problems

By KATHLEEN McELROY
Battalion Reporter

Students may now catch an intra-campus shuttle bus and get to buildings on the other side of the railroad tracks in about five minutes — three times faster than the buses last year.

But there are two problems — not everyone is sure where the buses are going and students may have to walk farther to get to and from their classes.

This year there is only one route going across the tracks instead of the three used last year. The two buses on the route, which run about five minutes apart, stop behind the Memorial Student Center and near the Health Center before heading across the tracks.

Once across the tracks, one bus (Blue Route North) stops at the site of the new medical school, and the other bus (Blue Route South) stops at the Kleberg Animal and Food Science Center.

Eugene Oates, housing operations supervisor, said Tuesday the

blue route was started last January. The old bus routes had more stops, however, it took more than 20 minutes for some of the buses to complete their routes, he said. The slowness of the buses was inconvenient to students, he said, especially last spring semester when that side of the campus began classes at the same time the main campus did. Most of the classes across the tracks this semester are back to the old system of starting on the half-hour instead of on the hour.

Oates said the buses are transporting students more quickly because of the fewer stops. A route to the baseball stadium may be added later, he said.

About 5,000 students have classes across the tracks. Oates said the buses are far from being full.

Part of the reason for their emptiness could be the confusion about the routes. Many students are unsure what the permanent routes are. Construction also hinders the routes. Wednesday the North and South routes were combined because the North Route will not be ready until next week. On Tuesday, the route was changed because of construction on the Wellborn railroad track.

One bus driver, like some of the passengers, thought the buses were still going to the Veterinary School but Oates said students going there can walk from the medical school site.

"On a sunny day," he said, "it's short distance."

A student on the bus said he didn't like walking that distance because it takes him five minutes to get to the school from the bus stop.

Another student on a different bus complained about having to walk from her off-campus dorm to MSC to catch a shuttle bus across the tracks. She said the system should be brought back to use.

The bus driver had a complaint, too. "Tell more people to ride the bus," he said. "I'm tired of riding myself."

McKenzie-Baldwin BUSINESS COLLEGE
Inquire About Our Term Starting October 2
Phone 822-6423 or 822-2368

AUTO INSURANCE FOR AGGIES:
Call: George Webb
Farmers Insurance Group
3400 S. College 823-8051

Sun Theatres
333 University 846-9808

The only movie in town
Double-Feature Every Week
10 a.m.-2 a.m. Sun.-Thurs.
10 a.m.-3 a.m. Fri.-Sat.
No one under 18
Ladies Discount With This Coupon
BOOK STORE & 25c PEEP SHOWS

PLITT Southern Theatres
UNIVERSITY SQUARE SHOPPING CENTER 846-6714 & 846-1151

Friday & Saturday Midnights
All Seats \$1.50 Tickets Go On Sale at 6:30

Before middle earth
Before frodo
Before there was a shire
Before gandalf
Before the great war of the rings
There were...WIZARDS

Side One

20TH CENTURY-FOX PRESENTS
A RALPH BAKSHI FILM
WIZARDS
Color by DeLuxe®

Side Two

GREGORY PECK and LAURENCE OLIVIER
THE BOYS FROM BRAZIL
if they survive...will we?

Arabs accused of soliciting at colleges

United Press International
DENVER — The Arab League has financed a propaganda campaign on American college campuses to win support for an independent Palestinian state and the PLO, a nationally known Jewish leader said.

Maxwell Greenberg, 57, national chairman of the Anti-Defamation League of B'nai B'rith, said the propaganda funds go both to student groups and to the institutions themselves.

"It seeks out reputable, top-notch American education institutions and gets them to put their prestige behind studies that are actually nothing more than Arab propaganda," he said.

Greenberg, said the aim of the program was to change the image of the PLO in the eyes of the American public and enlist the support of students, who will be the nation's future leaders.

ALLEN Oldsmobile Cadillac Honda SALES - SERVICE
"Where satisfaction is standard equipment"
2401 Texas Ave.
779-3516

Tupinambo
Eddie Dominguez Joe Arciniega 74

Pop those who demand the Real Thing!

If you want the real thing, not frozen or canned... We call it "Mexican Food Supreme."
Dallas location: 3071 Northwest Hwy 352-8570