

'79 blizzard causes rise in birth rate

United Press International
CHICAGO — The consequences of the "Great Blizzard of '79" should become apparent by mid-September, say doctors at Michael Reese Hospital.

It seems the doctors discovered a 20 percent increase in pregnancies over normal at this time of year. "The snow-in gave people nothing much to do except eat food and make love," said Dr. Allan Charles, an obstetrician. "There was food in the house and it was available, so they ate and gained weight. Their mates were also available, and they couldn't kill time at the movies, so they spent unusually large amounts of intimate time together."

Photo by Clay Cockrill

Letting off a little steam

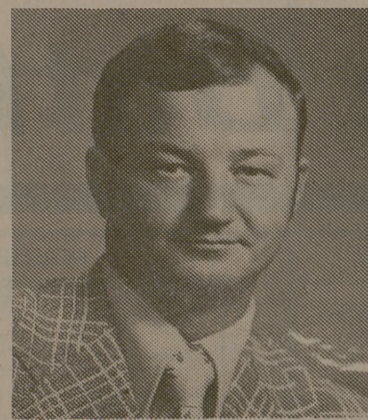
This graduate student is making adjustments in a steam system for an electrical generator in one of the mechanical engineering shops. The laboratories are scheduled for a complete renovation within the next few weeks.



AUTOMOBILE PARKING FOR LUNCH

Persons who have wanted to visit the new Salad, Sandwich and Soup luncheon area in the Sbsisa Basement can now find ample and convenient parking in Lot #32, across the street from Sbsisa.

Open 10:30 a.m. - 1:30 p.m.
MONDAY - FRIDAY
"QUALITY FIRST"



Gerald E. Petrash

Thomas Associates
520 E. University Drive
College Station, Texas 77840

has completed all the requirements to be certified as a

Qualifying Member of the 1979

MILLION DOLLAR ROUND TABLE

an independent, international association of life insurance agents. Membership reflects a commitment to continuing advanced education to better serve the financial security needs of families, individuals and businesses.



for anything... for everything... **WANT ADS**

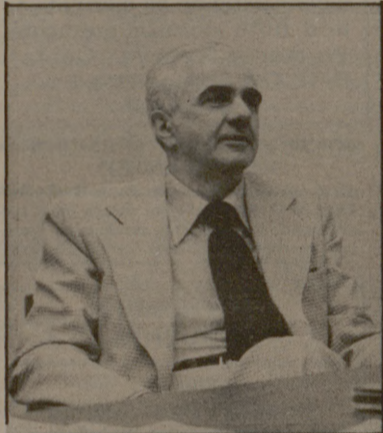
Call 845-2611

Energy use down in Bryan schools

In a time of fuel shortages, energy crises and rising prices, the Bryan School Board received some encouraging news as well as some discouraging news Monday night. The trustees received the annual energy conservation report. It stated that, over the last four years, the district has reduced consumption of energy by 38 percent. But, because of a 38.7 percent increase in the electrical rate, electricity in 1978 cost the district four percent more than in 1975. In 1975 the district used 10,064,107 kilowatt hours of electricity in comparison to 16,244,408 in 1975. The amount of hours used has steadily decreased over the last four years. The report stated total cost of electricity in 1975 was \$345,649.10 as compared to \$358,873.55 in 1978. Dr. C. B. Jones, director of planning and evaluation, said if the district had continued using electricity at its 1975 pace, it would have cost an additional \$180,310.28. The savings is due to a district energy conservation plan which began five years ago.

New dean to engineer industry-A&M contact

Texas A&M University's new dean of engineering, Dr. Robert H. Page, believes engineering education is a careful blend of many facets, including research and a close relationship with industry. Page will officially arrive Aug. 1 at this week made his first campus visit since announcement of the appointment. He will head the nation's largest engineering enrollment, more than 100,000 students from the freshman to the doctoral level. They comprise more than one-fourth of Texas A&M's 30,000 students.



DR. ROBERT H. PAGE

"I think we must operate on the premise that things in life are going to change," said the Rutgers University professor and mechanical engineering chairman. "There are a lot of examples around us. A college of engineering whose faculty interacts with industry on a one-to-one basis leads to a mutually advantageous situation," Page remarked. "The university helps the industry change with time, and industry helps the college programs by abreast." He believes such a relationship could be expanded to include state and local governments. The common meeting ground is research, contends the Pennsylvania native and University of Illinois distinguished alumnus. Once published, the research forms the basis of communication between participants. "Good communication between industry and the engineering college turns out to be very beneficial both, where no time is lost in the process," Page said. "The interaction therefore must be through direct contact. The student will come to realize the tremendous advantage to him of professor doing research," he said. "It means the professor is also a scholar and is learning new things. It brings enthusiasm to classroom teaching, along with a questioning attitude from which an observing student can benefit. As a student matures and sees his prof trying to learn things, he or she will be more apt to adopt a similar attitude," Page said. The 1949 Ohio University graduate earned master's and doctoral degrees from the University of Illinois in 1951 and 1955. A published researcher on subsonic flow separation and fluid mechanics, Page holds a patent for an electro-fluidic signal converter. The former Armed Forces radio engineer has consulted professionally since 1949, including for the Exxon Corp., and is a reviewer for a number of technical journals. He has published more than 150 technical articles. The two-day visit enabled Page to meet with various university officials, including President Jarvis E. Miller. "I am impressed with the faculty, students, facilities and programs," he remarked. "I'm in the business because I think engineering education is really great," Page said. "The principal reason for my being here is for the benefit of the students."

Happiness is getting a **SNOOPY & WOODSTOCK** Phone at your **GTE Phone Mart.**

There are two new celebrities at your GTE Phone Mart we'd like you to meet. Presenting the famous **SNOOPY** and his

companion **WOODSTOCK** from the **PEANUTS**® comic strip. It's a real working phone with lots of character. For anyone who wants to add some fun to their conversations.

So if you're a **SNOOPY** and **WOODSTOCK** fan, come to the GTE Phone Mart and we'll make all the arrangements to make them part of your household.

Because, more than just a phone store, we're your phone company.

PEANUTS Characters © 1958, 1965 United Feature Syndicate, Inc.



Culpepper Plaza

THE GREAT ESCAPE.

You dream about it at night... the day you can close your books, get out of this place and forget about studying for awhile.

Well, the Great Escape is here... this weekend, with Greyhound. Escape to the country or go see some friends. Just decide which escape route you want and we'll do the rest.

We'll get you out of town and away from the books so you can clear your head. It doesn't cost much and it'll do you a world of good.

So make the Great Escape this weekend... with Greyhound.

To	One-Way	Round-Trip	Depart	Arrive
Houston	6.45	12.30	12:20 P.M.	2:35 P.M.
Dallas-Ft. Worth	11.75	22.35	2:30 P.M.	7:35 P.M.
Waco	6.50	11.25	2:30 P.M.	5:15 P.M.
Austin	8.90	16.95	2:35 P.M.	6:30 P.M.

Students special to Houston & Dallas Friday afternoon. Call for Reservations.

112 Nagle College Station 846-1774



We accept VISA

Please see this

MBER is Association rialism Congress

... Karl

... Debbie

... Steve

... Bob

... Keith

... Robin

... Kevin

... Clay

... Lynn

n is a non-pr operated by community ne rmined by th