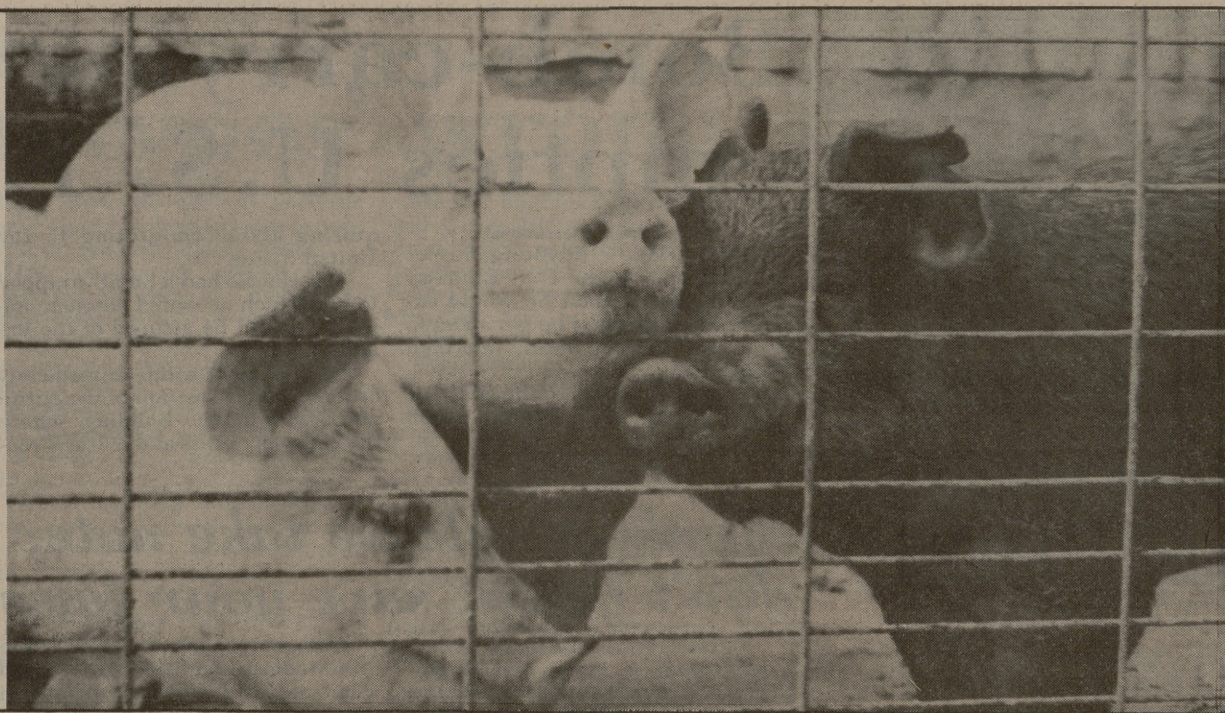


Ever feel 'all plugged up'?

These experimental pigs at the Texas A&M University Swine Center have plugs in their sides. After eating, the plugs are removed and experimental food is taken to be studied for its digestability.

Battalion photo by Marilyn Faulkenberry



Bills aim to increase use of alternate motor fuels

United Press International
AUSTIN — A series of bills to encourage the use of alternate energy sources was approved by the Senate Natural Resources Committee Wednesday.

Two bills sponsored by Sen. Bob Vale, D-San Antonio, and Sen. Bob Price, R-Pampa, would exempt gasohol — a motor fuel containing at least 10 percent agriculturally derived alcohol — from the state's 5 percent motor fuel excise tax.

Agriculture Commissioner Reagan V. Brown supported the tax exemption bills and said, "The idea for gasohol is an idea whose time has come."

Brown agreed that the 5 percent tax revenue which is appropriated for road construction and maintenance would be lost on the gas

which is sold as part of the gas-alcohol mixture.

"But we're not going to have those tax revenues anyway because of the current (gas) shortage," he added.

"We figure we've got about 10 years before we're at the mercy of outside oil producers," Brown continued, and said these bills would help alleviate the oil and gas shortage while also helping the Texas farmer, who will produce the alcohol for gasohol from surplus crops.

"We lost 3,000 farmers in 1978 in this state, we'll lose another 4,000 in 1979," the agriculture leader said. "Give them a chance to produce."

Another bill sponsored by Vale would encourage the use of solar and wind energy and place solar de-

vice installers under the regulation of the State Board of Plumbing Examiners.

The bill also provides that private solar generating energy devices are not considered public utilities by the Public Utility Regulatory Act, and that the Public Utilities Commission cannot set discriminatory rates against a customer who uses solar energy.

The committee approved a Vale bill requiring a feasibility study of using solid waste as a source of fuel when a person plans to construct or substantially renovate an electric utility plant.

Wiley Osborne of the Texas Department of Health, which regulates solid waste disposal in the state, said that currently more than 13 million tons of municipal solid waste is disposed annually in Texas.

PLAZA GRAND OPENING



We're tooting our own horn . . .

Classified

Call 845-2611

CARNABY SQUARE LTD.

You've come this far let Carnaby Square LTD. take you one step further... Spring '79

CULPEPPER PLAZA
10-6 Mon.-Sat.
10-8 Thurs.
693-4522

Special Group Resistol Felt Hats 40% off

LARGE SELECTION LARRY MAHAN AND WRANGLER BOOTS **40% off**

SELECTED RACK LADY WRANGLER SPORTSWEAR **60% off**

SPECIAL GROUP MENS LONG SLEEVE SHIRTS **\$6⁹⁵**

REGISTER FOR FREE PAIR OF TONY LAMA BOOTS TO BE GIVEN AWAY SAT MARCH 31

CULPEPPER PLAZA

Serendipity Shop

"Where the unusual is usual"

- Religious books
- Leather bound NIV Bibles
- Unusual gifts for all ages
- Magic, novelty and gag gifts
- Magician available for parties

Culpepper Plaza 693-9405

New location in the LaSalle Hotel in Bryan

Aggieland T-shirts

FREE TRANSFERS WITH PURCHASE OF REGULARLY PRICED SHIRT.

Selected groups of shirts \$1²⁵
Sweatshirts \$4⁰⁰
Selected t-shirts 100% cotton \$3⁰⁰
Medalist shirts reg. \$7⁰⁰ Now \$4⁵⁰

ALL CAPS \$2⁷⁵

CULPEPPER PLAZA

Radio Shack RED TAG SALE

SAVE SAVE

STOREWIDE SALE SAVE UP TO **50% OFF ON MANY ITEMS**

- RADIOS
- CAR STEREO'S
- TV ACCESSORIES
- TAPE RECORDERS
- TEST EQUIPMENT
- SCIENCE KITS

REGISTER NOW for drawing for a TRC-448 48 channel single side band CB Radio to be given away Saturday, March 31. Reg. \$29.95 value.

BRYAN 1125 VILLA MARIA 846-7384 OPEN 10-6 MON-SAT

COLLEGE STATION CULPEPPER PLAZA 693-1444 OPEN 10-6 MON-SAT EXCEPT THURS 1-4

Radio Shack

LITTLE GALLERY by Hallmark

Easter symbol of Faith... Hope

The gleaming Praying Hands pendant of faceted, full lead crystal radiates the singular brilliance of Easter. Truly a gift that says you care. With rhodium plated chain. \$22.50, gift boxed.

Hallmark Cards **STARSHIP SHOPS**

Manor East Mall & Culpepper Plaza

Swensen's is a **Mocha Chip** off the old block.

Our **PRALINE ALMOND** had more almonds per bite.

Hear about the guy who jumped a claim on a **SWENSEN'S GOLD RUSH SUNDAE** and then did a **HOT FUDGE BONANZA SPLIT?**

We would like to point out that SARSAPARILLA is not spelled SASSPARILLA even though SARSAPARILLA is pronounced SASSPARILLA, so when you come into Swensen's be sure to order a PHOSPHATE.

ATTENTION: Swensen's **Banana Split.**

If you see him, please send him home.

Our Vanilla is so old fashioned, we have to give it a cookie for a sundae escort. (... but let me tell you about that cookie.)

When you eat a **BLACK BART SUNDAE** you get a chocolate moustache, a marshmallow snarl and an irresistible urge to stick up a cherry orchard.

Fact: Swensen's has a recipe for Dill Pickle Ice Cream.
Fact: Swensen's makes their ice cream in small batches, 40 quarts at a time.
Fact: You can order Dill Pickle Ice Cream at Swensen's. (Minimum order, 40 quarts)

SWENSEN'S ICE CREAM CONES WEIGH A FULL QUARTER POUND. Even our thin mint.

SWENSEN'S would like to squelch the rumor that our **PINEAPPLE SHAKE** is the latest dance craze in Hawaii.

If you can't bring the family to Swensen's, bring Swensen's to the family. Take-out available.

SWENSEN'S ICE CREAM FACTORY

693-6948
CULPEPPER PLAZA COLLEGE STATION