

Amtrak 'unfair' to some

United Press International
SAN ANTONIO — Amtrak purposely has slighted Texas and the 39 other states that face severe cutbacks in Amtrak service so that the company can concentrate on routes in the less profitable "North-Corridor," according to a report by the Austin Chamber of Commerce.

E.P. Hamilton III, chairman of the chamber's Amtrak Committee, released the report last week, claiming Amtrak officials never made an effort to provide adequate service to meet passengers on its longhaul routes, such as the "Interamerican" Chicago to Laredo route which comes through Austin and San Antonio, or the Chicago to Houston route.

Hamilton alleges Amtrak "keeps a double set of books" so that it can show Congress that the Northeast Corridor is the most profitable of its routes, when in reality Amtrak is losing \$38 million in the Northeast Corridor track maintenance alone to follow its long haul routes.

He said Amtrak's alleged juggling of books makes it appear the long-haul routes are losing most of the money, when actually most of the more than \$600 million deficit is incurred in the Northeast Corridor, which has only 2 percent of the total route miles but runs 190 trains a day.

These results show conclusively that disproportionate service and facilities at the expense of the 40 non-corridor states is not economically justified. The report concludes the greatest potential for profitability is in the long hauls, most of which are to be eliminated, and the lowest potential for profitability is in the Corridor, which DOT desires to preserve.

Transportation Secretary Brock announced Wednesday the Carter administration wants to slash 43 percent of the 15,700 miles in the Amtrak route system, a plan that would kill all passenger service through Texas except the Sunset Limited, which passes through San Antonio at night from New Orleans to Los Angeles.

"We believe this is grossly unfair to the citizens of the state of Texas."



Battalion photo by Lee Roy Leschper Jr.

The latest in knee-highs?

This little fellow was ready for rainy weather over the weekend with galoshes fashioned from plastic bread sacks on each of his paws.

His owner, a resident of University married-student housing, said he wanted to keep the pup's paws dry.

IUD doesn't cause more birth defects, health study claims

United Press International
BIRMINGHAM, Ala. — A study at the Center for Disease Control in Atlanta refutes recent reports of an increased incidence of birth defects in babies conceived while their mothers were wearing an intrauterine device.

Results of the case-control study indicated no significant increase in occurrence of limb reduction deformities in babies exposed to the IUD at conception than those in either of two control groups. Results of the study were reported in Fertility and Sterility, a publication of the American Fertility Society.

February named Inventor's Month in Edison's honor

United Press International
WASHINGTON — Thanks to Thomas A. Edison the month of February has been designated as Inventors Month by the U.S. Patent and Trademark office.

The year 1979 is currently being celebrated as the "National Centennial of Light" for Edison's invention of the incandescent light bulb 100 years ago — the first electric light bulb that worked.

IPO, Inc., a non-profit public educational group dedicated to preserving the patent system as an incentive to innovation and creativity says that Edison, at age 31, also patented the first phonograph in February.

3709 E. 29TH (TOWN & COUNTRY CENTER)

SARITA'S SMOKE SHOP

PIPES
SNUFF
SPITONS
PIPE RACKS
ROLLING PAPER
CIGARS - IMPORTED AND DOMESTIC
LIGHTERS/FLUID
IMPORTED CIGARETTES
CUSTOM BLENDED TOBACCO
CANDLES THAT KILL TOBACCO ODOR



Day students get their news from the Batt.

Mr. Gatti's
The Answer to a Pizza Lover's Prayer

Fast lunch, intimate booths, party rooms, draft beer, cozy atmosphere and old movies.

HAPPY HOUR — BEER & WINE 2-4-1
MON.-FRI. 4:30-6:00 P.M.

OPEN MON.-FRI. 12 A.M.-MIDNITE; SAT. 'TIL 1 A.M.; SUN. 'TIL 11 P.M. LUNCHEON SPECIAL 11 A.M.-2 P.M. MON.-FRI.

OUR PLACE IN UNIVERSITY SQUARE COLLEGE STATION 846-4809

OUR NEW PLACE 2901 TEXAS AVENUE BRYAN 779-2431

TRUCKLOAD SALE

with **GUSTOM SOUNDS** and **Nikko Audio**

Nikko Audio offers a complete 3 year parts and labor warranty on all their products

Nikko Audio NA850/NT850

NT-850 AM/FM Stereo Tuner
Features abound in the NT-850 Stereo Tuner from Nikko Audio — a switchable (normal/narrow) IF band, dual gate MOS-FET front end section, multipath switching, 4 FM and 2 AM variable capacitors, FM quadrature detector, and phase-lock-loop multiplex circuitry insure low distortion, signal stability, maximum stereo separation and outstanding reception.

FM specifications include a high (IHF) sensitivity of 1.8µV, (IHF) selectivity of 65dB/90dB (normal/narrow), high signal-to-noise ratio of 75dB in mono, and 70dB in stereo. Total harmonic distortion is a low 0.08%/0.2% (normal/narrow), mono or 0.15%/0.4% (normal/narrow), in stereo. Capture ratio is 1.0dB/1.5dB (normal/narrow).

NA-850 Integrated Stereo Amplifier
The NA-850 delivers 60 watts, continuous power output, minimum RMS per channel, both channels driven into 8 ohms from 20Hz to 20kHz with no more than 0.08% total harmonic distortion.

Features on the NA-850 include two large VU meters, two system speaker control, separate bass/treble controls, tone defeat, subsonic filter (-3dB at 7Hz) for reducing turntable rumble, high filter, loudness switching, 3-position function switching, 5-position tape control, balance control and variable VU meter control. Additional features include a special speaker protection circuit and Nikko's exclusive circuit breakers.

NA850/NT850 bought separately \$520
SALE this week \$399 for pair

(Custom walnut veneer cabinets are available for the NA-850/NT-850 combinations.)

Nikko Audio NA550/NT550

NT-550 FM/AM Stereo Tuner
The NT-550 FM/AM stereo tuner has a dual gate FET front end section, along with multipath and Hi-Blend switching to eliminate interstation noise for a clear and "locked-in" FM signal.

FM section specifications include a usable sensitivity of 1.9µV (at 10.8dBf in mono), 50dB quieting sensitivity of 16dBf/34dBf (mono/stereo), signal-to-noise ratio at 65dBf of 72dB/68dB (mono/stereo) and THD at 65dBf of 0.1%/0.2% (mono/stereo). Capture ratio is 1dB. Stereo separation at 1kHz is 45dB and at 50Hz to 10kHz is 30dB.

NA-550 Integrated Stereo Amplifier
The NA-550 delivers 45 watts, continuous power output, both channels driven, minimum RMS per channel into 8 ohms from 20Hz to 20kHz with no more than 0.08% total harmonic distortion.

Features on the NA-550 include two large VU meters, two system speaker control, separate bass/treble controls, infinitely variable VU meter control, high filter, loudness switching, 3-position function switching, 5-position tape control and balance control. Additional features include a special speaker protection circuit and Nikko's exclusive circuit breakers.

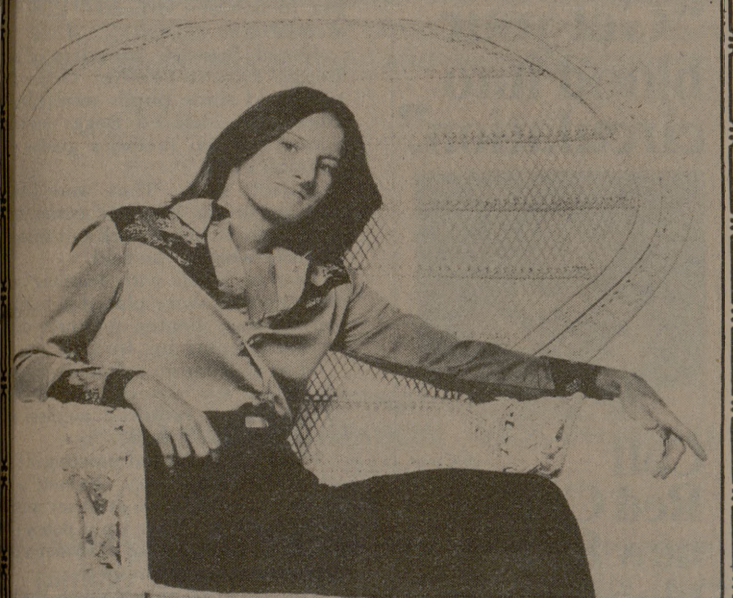
NA550/NT550 bought separately \$420
SALE this week \$299⁹⁵ for pair

(Custom walnut veneer cabinets are available for the NA-550/NT-550 combinations.)

SHEAR CLASS
FOR A CLASSY CUT, CALL
Patrick
846-4771

GO TEXAN DAY

Snook SPJST Hall, FM 60
Slovacek Bar-B-Que
Starting at 12:00 noon
Hay Hauling Contest 1:00 P.M.
Old Time Fiddlers Contest 3:00
Whistle Off 4:00



Dance 7:30-12:30
Featuring
LINDA HARGROVE
Saturday, February 10th

Sponsored By
Burlinson County Fair Go Texan Committee

"The Woofers" says: There's no room left for me to snooze since the truck came so come on in and get your **Nikko** from Custom Sounds where they take care of your service needs!

GUSTOM SOUNDS

3806-A Old College Road (Next to Triangle Bowl)

Open 10-6