

Wildlife major carves wood life

Bill Alther, a sophomore wildlife and fisheries science major from Midland, sits behind his one-piece handcarved birds. He handpaints and carves his art as a hobby and sells them for approximately \$200 each.

Battalion photo by Beth Breuker

Probation financing approved

By ANDREA VALLS

Battalion Staff

Brazos County Commissioners Wednesday approved a contract granting quarterly state funds to the 85th District adult probation department.

John Godfrey, chief probation officer, said the contract does not include the juvenile probation division, which is still funded by Brazos County. But, he said he hopes the next session of the State Legislature will approve such funds for the juvenile division.

William R. Vance, county judge, said the juvenile department will become a separate division within the district probation department.

Under the contract, the State absorbs all operational costs of the adult probation department, including soft retirement and vacation costs. Godfrey said the county will still pay all housing and utility fees. He added that the probation department received its first state check on Tuesday, for \$33,806.50.

In other business, commissioners approved payment to Soil Mechanics, Inc., and Thurmond and Stuart for work completed at the Brazos County Multi-Use Facility. A request for change in status of county employees was also approved.

THE BATT DOES IT DAILY

Monday through Friday

Research ship seeks reliable sea information

A month after the space agency fires its seventh and last Nimbus satellite into orbit next Monday, scientists will head to sea on a Texas A&M University research vessel to run spot checks on the accuracy of the satellite information sent back.

Twenty scientists and crew will be aboard the RV Gyre when it sails from Galveston Oct. 20, said Texas A&M oceanographer Sayed Z. El-Sayed, one of the project leaders.

The Gyre researchers will take water samples, measure light penetration and observe ocean colors at various locations in the Gulf of Mexico until Nov. 3.

The project is part of an effort to gain worldwide information on food supplies from the sea.

"Our job is to compare the data from the satellite with the sea truth information," said El-Sayed. "The satellite will be sending voluminous data. We have to have confidence in its accuracy."

The cruise is funded by a National Aeronautics and Space Administration grant and will involve scientists from NASA, the National Oceanographic and Atmospheric Administration, Scripps Institute of Oceanog-

raphy, the University of Washington and Bigelow (Maine) Laboratory.

"Ocean color gives us an indication of the amount of phytoplankton, the essence of life in the seas. We know the density of the phytoplankton is a reflection of the productivity of a body of water."

"We are hoping, by use of special sensors, to pinpoint areas of high productivity," said the Texas A&M researcher.

"Our job is to compare the data from the satellite with the sea truth information," said El-Sayed. "The satellite will be sending voluminous data. We have to have confidence in its accuracy."

Instruments aboard Nimbus-G will monitor the oceans with 10 visible and infrared wavelength scanners.

"We will also look at the process of upwelling, the flow of cold water from the depths to the surface. This is normally found on the eastern sides of the major oceans. Fisher-

men know these are the best fishing grounds in the world," said El-Sayed.

"Our interest in the coastal regions stems from the fact that 90 percent of the primary production of the world oceans occurs in these coastal waters. Except for tuna and other high seas fishing, the bulk of the world fish catch comes from the coastal regions."

"At a time when these resources will be playing a prominent role with regard to the world food supply, it is imperative that reliable data be obtained on a global scale," said El-Sayed.



MSC SCONA 24

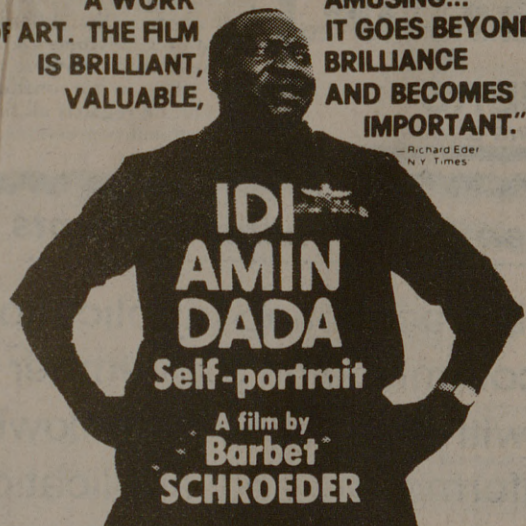
Committee Interviews

Sept. 18-21 Rm. A, L & M
6:00-10:00 MSC 216

Sign up in Scona cubicle for an interview time.

THE MOST CONTROVERSIAL FILM OF THE YEAR ABOUT THE MAN BEHIND ENTEBBE!

"A WORK OF ART. THE FILM IS BRILLIANT, VALUABLE, AMUSING... IT GOES BEYOND BRILLIANCE AND BECOMES IMPORTANT!"



IDI AMIN DADA
Self-portrait
A film by Barbet SCHROEDER

MSC ARTS - MONDAY - SEPTEMBER 22 - 8:00 P.M. - RUDDER THEATRE - \$1.00

Tower Dining Room



Serving Luncheon Buffet Sunday through Friday 11:00 A.M. to 1:30 P.M. \$3.50

Top Floor of Tower Dining Room Sandwich & Soup Mon. thru Fri. \$1.75 plus drink extra

Open to the Public

"QUALITY FIRST"

MSC BASEMENT DON SANDERS is back!

Don't YOU be the one to miss him this time.
Fri. & Sat. 8-12 Mid.
\$1 advance tickets at Rudder Tower Box Office
\$1.25 for tickets at the door.

coffeehouse

MSC Committee for Awareness of Mexican American Culture

CAMAC

SAN ANTONIO

COLLEGE PERFORMING

GROUP AND

MARIACHIS

SEPT. 15 9:00PM MSC FOUNTAIN



THE MSC ARTS PRESENTS "TOAD THE MIME"

Fri. Sept. 22

8:00 p.m.

Rudder Theater



\$2.00 All Students

\$3.00 Non-Students

Under 6 Years Free

EXTRA: Master Mime Class in Room 308 Rudder Tower Thurs., Sept. 21, 6:30 till 10:30. Price: \$2.00 All Tickets At Box Office

APPLICATIONS NOW BEING ACCEPTED FOR MSC RECREATION COMMITTEE CHAIRMAN

FRIDAY

FRIDAY

DEADLINE FRIDAY, SEPT. 15

5:00 P.M.

APPLY ROOM 216

MEMORIAL STUDENT CENTER



At Last Year's Price, You Will Be Pleased With These Carefully Prepared and Taste Tempting Foods. Each Daily Special Only \$1.69 Plus Tax. "Open Daily" Dining: 11 A.M. to 1:30 P.M. — 4:00 P.M. to 7:00 P.M.

MONDAY EVENING SPECIAL
Salisbury Steak with Mushroom Gravy Whipped Potatoes Your Choice of One Vegetable Roll or Corn Bread and Butter Coffee or Tea

TUESDAY EVENING SPECIAL
Mexican Fiesta Dinner Two Cheese and Onion Enchiladas w/chili Mexican Rice Patio Style Pinto Beans Tostadas Coffee or Tea One Corn Bread and Butter

WEDNESDAY EVENING SPECIAL
Chicken Fried Steak w/cream Gravy Whipped Potatoes and Choice of one other Vegetable Roll or Corn Bread and Butter Coffee or Tea



THURSDAY EVENING SPECIAL
Italian Candle Light Spaghetti Dinner SERVED WITH SPICED MEAT BALLS AND SAUCE Parmesan Cheese - Tossed Green Salad Choice of Salad Dressing - Hot Garlic Bread Tea or Coffee



FRIDAY EVENING SPECIAL
BREADED FISH FILET w/TARTAR SAUCE Cole Slaw Hush Puppies Choice of one vegetable Roll or Corn Bread & Butter Tea or Coffee

SATURDAY NOON and EVENING SPECIAL
Chicken & Dumplings Tossed Salad Choice of one vegetable Roll or Corn Bread & Butter Tea or Coffee

SUNDAY SPECIAL NOON and EVENING
ROAST TURKEY DINNER Served with Cranberry Sauce Cornbread Dressing Roll or Corn Bread - Butter - Coffee or Tea Giblet Gravy And your choice of any One vegetable

"Quality First"