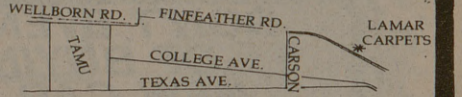


**Anheuser-Busch soon to market lemon soft drink**

United Press International  
ST. LOUIS — Anheuser-Busch Inc., the world's largest brewer, will soon testmarket a lemon-flavored soft drink.  
August A. Busch III, chairman and president, said Tuesday the drink will have "all natural ingredients" and no chemical preservatives. Busch said the drink, to be called "Chelsea," will contain a "blend of real lemon and lime juices, real apple, spice and other natural flavors."  
The move by Busch into the soft-drink market had been expected since earlier this year, when three members of the board at both Busch and the Seven-Up Co. left the board at Seven-Up to avoid a possible conflict of interest.



**Warehouse Sale**  
Weekdays One til Five,  
Saturdays Nine til Noon  
**Roll ends, remnants & room-sized rugs start at \$14<sup>95</sup>**  
Real Bargains - Most Items at Cost or Below  
1804 Finfeather Road  
Bryan



**Local utility bills pay more than just electricity costs**

Many students living in apartments in Bryan-College Station are paying their own electricity bills this year. Students may be billed in one of three ways, said North Bardell, College Station City Manager.

On the individual metering system, each apartment is billed separately and a security deposit is made with the utility company.

Complexes on the master-meter system receive a bill for all of the apartments and divide this among the tenants. The cost may be included in the rent or a separate bill for electricity may be charged each month.

A combination of the two, called sub-metering, allows the tenant to pay for electricity through the complex. Each unit has its own meter.

"This is to keep the little old lady who conserves energy with a thermostat set on 80 from paying the bills of a next door neighbor who is sweating on the patio while air conditioning the courtyard," said Bardell. When a consumer pays his bill, he is paying for fuel, bond retirement, work crews, and many other costs. College Station does not generate any of its own power. All electricity is purchased from Bryan and Gulf States Utilities.

Until 1975, 100 percent of the power was bought from Bryan. College Station is in the process of changing suppliers. Within 10 years, all power will be bought from Gulf States Utilities.

Billing methods in Bryan and College Station are quite similar but the rates are different. Rates are set by

the city council. The State Utilities Commission has no authority to regulate rates set by municipally owned utility companies.

Both have recently adopted new rate schedules. The rates per kwh change as consumption increases. For example, in Bryan, the first 250 kwh costs 4.1 cents per kwh. The next 250 kwh costs 3.38 cents per kwh.

Bryan Electrical Utilities Director Gailord White credits this to the demand costs which occur no matter how much electricity is consumed.

They include keeping the plants and lines in good condition throughout the year. Plants run at full capacity during August but still must be maintained during the col-

der winter months when consumers turn to natural gas to heat their homes.

To cover the costs of meter reading and upkeep, personnel, equipment and crews, a monthly customer charge is added to each bill.

There is one other cost White refers to as variable costs. These vary with the amount of electricity produced and cover the costs of water and chemicals.

A large expense for College Station and Bryan is keeping up with the growth.

College Station has grown from a community of 17,000 people to a city of 40,000 in recent years. "Every dollar we take in is spent on the system," Bardell said.

**Tower Dining Room**



Serving Luncheon Buffet  
Sunday through Friday  
11:00 A.M. to 1:30 P.M.  
\$3.50

Top Floor of Tower Dining Room  
Sandwich & Soup Mon. thru Fri.  
\$1.75 plus drink extra

**Open to the Public**

"QUALITY FIRST"

**Gamblers give up millions**

United Press International  
ATLANTIC CITY, N.J. — An Atlantic City gambling casino reported Tuesday that it won more than three quarters of a million dollars every day in August.

Resorts International reported Tuesday that its "net win" averaged \$759,208 in August. The net win is the casino's total take over and above players' winnings before operating expenses or taxes.

**MSC Cafeteria**

At Last Year's Price, You Will Be Pleased With These Carefully Prepared and Taste Tempting Foods.  
Each Daily Special Only \$1.69 Plus Tax.  
"Open Daily"  
Dining: 11 A.M. to 1:30 P.M. — 4:00 P.M. to 7:00 P.M.

**MONDAY EVENING SPECIAL**  
Salisbury Steak with Mushroom Gravy Whipped Potatoes Your Choice of One Vegetable Roll or Corn Bread and Butter Coffee or Tea

**TUESDAY EVENING SPECIAL**  
Mexican Fiesta Dinner Two Cheese and Onion Enchiladas w/chili Mexican Rice Patio Style Pinto Beans Tostadas Coffee or Tea One Corn Bread and Butter

**WEDNESDAY EVENING SPECIAL**  
Chicken Fried Steak w/cream Gravy Whipped Potatoes and Choice of one other Vegetable Roll or Corn Bread and Butter Coffee or Tea

**THURSDAY EVENING SPECIAL**  
Italian Candle Light Spaghetti Dinner SERVED WITH SPICED MEAT BALLS AND SAUCE Parmesan Cheese - Tossed Green Salad Choice of Salad Dressing - Hot Garlic Bread Tea or Coffee

**FRIDAY EVENING SPECIAL**  
BREADED FISH FILET w/TARTAR SAUCE Cole Slaw Hush Puppies Choice of one vegetable Roll or Corn Bread & Butter Tea or Coffee

**SATURDAY NOON and EVENING SPECIAL**  
Chicken & Dumplings Tossed Salad Choice of one vegetable Roll or Corn Bread & Butter Tea or Coffee

**SUNDAY SPECIAL NOON and EVENING**  
ROAST TURKEY DINNER Served with Cranberry Sauce Cornbread Dressing Roll or Corn Bread - Butter - Coffee or Tea Giblet Gravy And your choice of any One vegetable

"Quality First"

**MSC AGGIE CINEMA**



Burt Reynolds "Smokey and the Bandit" Sally Field - Jerry Reed - Jackie Gleason

Friday, 8 & 10 p.m.  
Saturday, 10 p.m.  
8 p.m.  
Rudder Auditorium

**LUCKY LADY**



Burt Reynolds Lisa Minelli • Gene Hackman

Sunday  
September 10  
2 p.m.  
Rudder Theater



PARAMOUNT PICTURES PRESENTS AN ALBERT S. RUDDY PRODUCTION STARRING BURT REYNOLDS "THE LONGEST YARD"

Friday  
September 9  
Midnight  
Rudder Auditorium

**Deliverance**



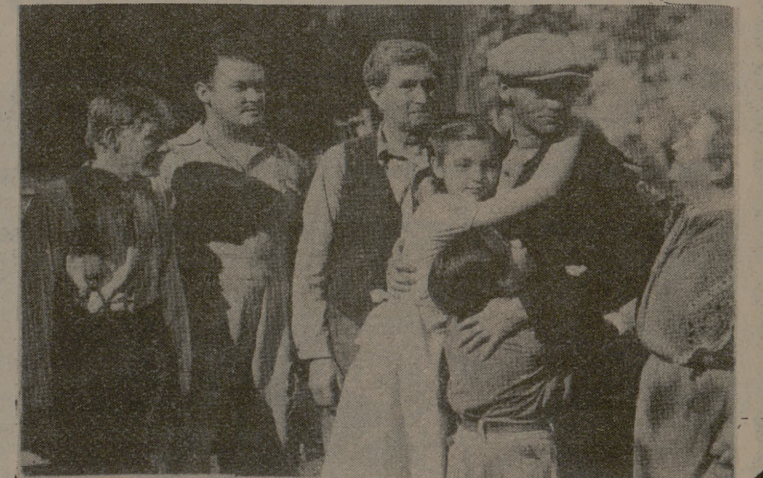
Saturday  
September 10  
Midnight  
Rudder Auditorium



**Nicholas and Alexandra**

Tuesday  
September 12  
8 p.m.  
Rudder Theater

**THE GRAPES OF WRATH**



Wednesday  
September 13  
8 p.m.  
Rudder Theater

Admission: \$1.00 with TAMU ID

Advance Tickets at Rudder Tower Box Office