

# Special election guide

## CITY COUNCIL Place 6

### Dozier —

Jim Dozier, 54, 1005 Walton Drive, associate professor of finance at Texas A&M.

**Are you in favor of the continued requirement of a conditional use permit for fraternities and sororities to build their own house?**  
Yes. The sorority and fraternity house is a type of property use that creates problems not created by other types of building, such as increased traffic and parking problems. The city is obligated to provide conditional use permit so increased traffic and parking problems can be controlled for the protection of the surrounding properties.

**What role should the students of Texas A&M play in city government?**  
The students can play any particu-

lar role in city government if they are in fact considered permanent residents of College Station. By that, they can run for the council, mayor or serve on many of the commissions that the city has. It was my suggestion two years ago that there be a student liaison to the city council. The students do not have a vote but they do sit in on all of the meetings, including those that are closed to the public. The reason for creating this liaison is to allow the students to know exactly what their city is doing.

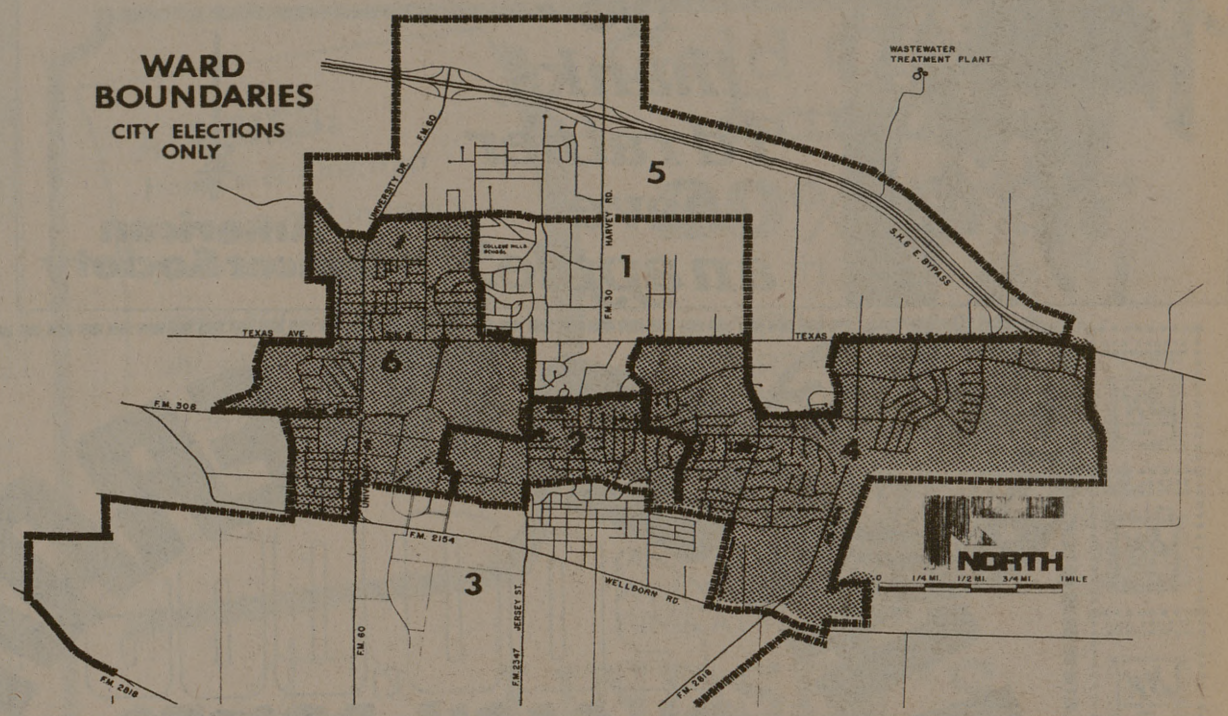
**Are you in favor of allowing the city to expand in an eastward direction even though that area lies in a floodplain?**  
Of course. Even though the expansion to the east may include the floodplain, we have an ordinance which prohibits heavy construction

there to protect it and prevent building which could cause additional water problems down stream. The entire eastern direction is not floodplain, so the city just wants to make sure that construction does not occur there. People like to build in the floodplain because it is pretty and when it floods they come to the city and say, "help". But the city can't help because they should not have been there in the first place. When structures are built it increases the flow of water to the downstream property owners.

**Are you in favor of the ward system? If so, what merits does it have? If not, what merits does the at-large system have?**  
No, I'm not in favor of the ward system. (see DOZIER, page 6)



Dozier



College Station residents in Districts 2, 4 and 6 will elect councilmen from their wards April 1. Polling places for City Council elections are the A&M Consolidated Special Services

Building, District 2; South Knoll Elementary School, District 4; and the College Station Fire Department, District 6. The mayor is elected at large.

## In the mayor's race . . .

### Lorence Bravenec

Lorence Bravenec, 42, 1208 Orr, counting professor at Texas A&M.

**Are you in favor of the continued requirement of a conditional use permit for fraternities and sororities to build their own house?**  
At this point, yes. City Council discussed it earlier, and I was in favor of it then. The major reason for the conditional use permit was because of fire safety. It's not a matter of trying to keep them out.

**What role should the students of Texas A&M play in city government?**  
They can play whatever role they want to. City Council has sought additional student participation, but they don't seem to have any interest in city government. Most of the things that council decides have an impact on the permanent resident, not on the student.

**Are you in favor of allowing the city to expand in an eastward direction even though that area lies in a floodplain?**  
There is no building in the flood plain at this time. We expanded in the past to control the development by annexing it through the flood plain.

**Are you in favor of the ward system? If so, what merits does it have? If not, what merits does the at-large system have?**  
No, I'm not in favor of the ward system. I haven't seen any advantages materialize. There's a significant disadvantage because not everyone votes on every councilman.

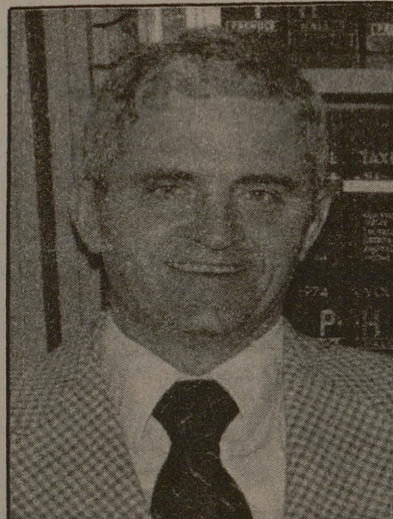
**With the at-large system, the people get the chance to vote for every councilman.**  
Will you encourage further building of apartment complexes

for students and how do you think this will affect the city in the next 5-10 years?  
Well, we're not discouraging it. It is the market system that controls the building of more apartment complexes.

**Do you think College Station needs a property tax increase?**  
If this bond issue passes on April 1, then we will need a property tax increase.

**Do you see any problems with the current zoning code? Would you consider new areas for construction?**  
I don't see any significant problems with the current zoning code. Zoning ordinances permit too dense apartment complexes.

**Would you consider construction**



Bravenec

**of more recreational facilities?**  
Of course. I'm in favor of construction of several types of recreational facilities.

### Karl Crawley

Karl Crawley, 19, 217 Aston Hall, a Texas A&M student majoring in environmental design.

**Are you in favor of the continued requirement of a conditional use permit for fraternities and sororities to build their own house?**  
No. I don't feel any group at A&M or College Station should be discriminated against. If we discriminate against sororities and fraternities building their own house then we should discriminate against single's housing. We can't bend the rules for one certain group.

**What role should the students of Texas A&M play in city government?**  
Students need to be a lot more active. Most students are apathetic towards taking an active part in city government. City Council could encourage students to be more ac-

tive by meeting on campus sometime.

**Are you in favor of allowing the city to expand in an eastward direction even though that area lies in a flood plain?**  
No, simply because it (expansion) would be in the flood plain. I don't think College Station builders are looking at a long range aspect of what will happen if they develop in a flood area. City Council needs to think about placing industry in the flood plain, not housing.

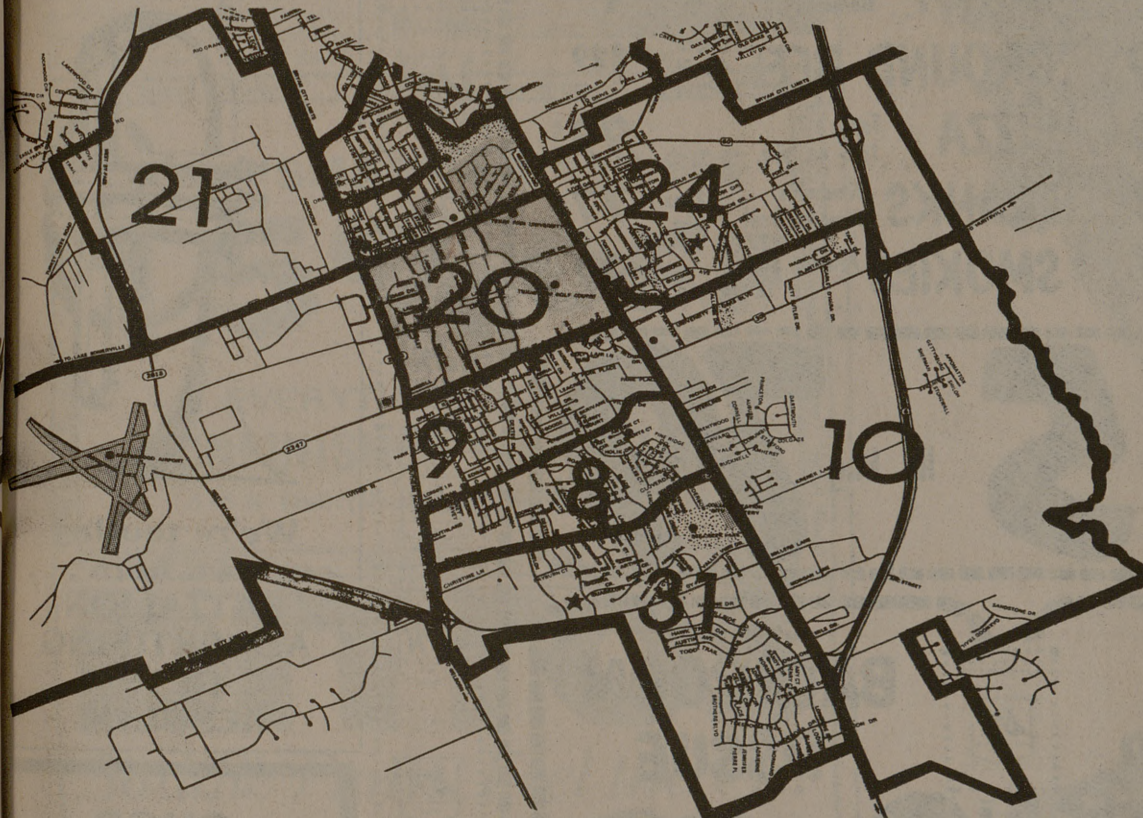
**Are you in favor of the ward system? If so, what merits does it have? If not, what merits does the at-large system have?**  
I think we need to consider a combination of the ward and the at-large system. In the ward system, you know exactly who you are voting for and the candidate has to campaign on a grass-roots level. He can't blitz the people. I really like the idea of a neighborhood concept.



Crawley

The at-large system allows for large turnovers to the people, so the electorate isn't stuck with the same representative year after year.

(see CRAWLEY, page 8)



The A&M Consolidated School Board ballot includes candidates for Positions 6 and 7. Three candidates are running for each position. Polling places are South Knoll Elementary School (8), the A&M Consolidated Special Services Building (9), the College Station

Fire Department (10), the Texas A&M University Center (20), the College Station Municipal Building (21), College Hills Elementary School (24) and A&M Consolidated High School (31).

## SCHOOL BOARD Position 7

### — Brown —

Herman Brown, 46, 200 Lee, professor of agricultural education at Texas A&M.

**Do you favor the merger of the city and school tax offices? What are the advantages (or disadvantages)?**  
Yes, provided the school district could maintain control over assessment and the tax rate. I favor this in principle due to possible tax dollar savings. However, I feel there are

many problems to be solved before consolidation can be approved.

**Do you favor the car tax instituted by the school tax-assessor?**  
It's not so much how I feel — it's the law. Everyone must pay taxes. If automobiles are to be taxed according to law, they must be taxed. I am in favor of alternatives such as an increased sales tax or a well-head tax on oil products. The ad valorem system is very unfair.

**Why do you feel the school tax**

office appraisals are higher than city tax appraisals of the same property?  
I do not know why city appraisals are higher unless the city hasn't updated its assessments in the last few years.

**How seriously will the school board take the efforts of the Property Owner's Association?**  
I do not know the answer. I don't know how it (the school board) will react to any organization.



Brown

### — Wasson —

Bill Wasson, 30, 1608 Austin, director of audits for the Texas A&M System.

**Do you favor the merger of the city and school tax offices? What are the advantages (or disadvantages)?**  
Yes, I do favor the merger of the school and city tax offices, and would further consider county tax offices also, providing that the service to citizens would be as effective. And also providing that there would be a study of cost versus benefit that proved there would be significant reduction in cost for the taxpayer in the district. I see this as being the primary and the only advantage of real importance to the merger.

**Do you favor the car tax instituted by the school tax-assessor?**

No, I do not. However, it is my understanding from attending the board meetings that the board and the superintendent are in effect powerless to exercise any control over the tax assessor as to what he does or does not tax. Other than perhaps a statement from the board saying that they are opposed to the tax.

**Why do you feel the school tax office appraisals are higher than city tax appraisals of the same property?**  
I really don't know. I would assume that one primary reason is the fact that two different appraisals, two different judgements, are made as to the value of a particular piece of property. Basically, I would think that the tax assessor in both instances should have arrived at the

same conclusion as to value. My concern is that all property be appraised at its fair market value and then the tax rate and the percentage of market value be adjusted as required to meet the needs of the district rather than having variations in what is judged to be market value.

**How seriously will the school board take the efforts of the Property Owner's Association?**  
The school board has an obligation to all citizens, but that doesn't mean a member should listen to a particular group any more than other groups. As a board member, I don't think you can respond to only one group. I feel that a board member is charged with representing the community as a whole.



Wasson

### — Hardin —

Walter Hardin, 32, Route 4, Box 56B, Bryan, owner of a Texas based holding company of income producing property.

**Do you favor the merger of the city and school tax offices? What are the advantages (or disadvantages)?**  
Yes, I favor the merger of the city and school tax offices because a) evaluations would parallel more closely the market values of the properties, b) administrative costs would be reduced by decreasing overhead and c) it would strengthen

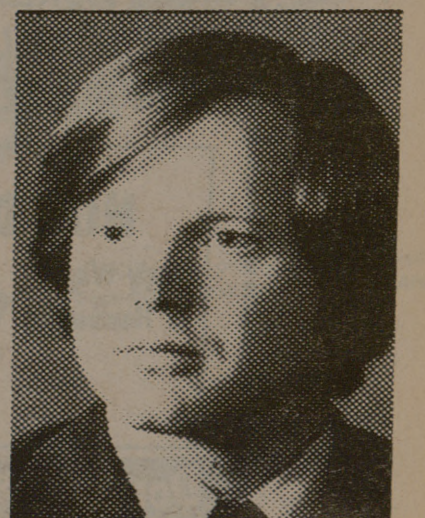
the foundation upon which the school district's future growth could be based.

**Do you favor the car tax instituted by the school tax-assessor?**  
No, because I don't see why an A&M student should have to pay A&M Consolidated school taxes merely because he owns an automobile. Also, no equitable system exists in which we can properly enforce the law.

**Why do you feel the school tax office appraisals are higher than the city tax office appraisals of the same property?**

We have to adjust our assessments in order to maximize the money we receive from the federal government. The city and school district budgets and tax bases are not equal to each other, therefore, the evaluations must be different.

**How seriously will the school board take the efforts of the Property Owner's Association?**  
In the past, they have not responded to the Property Owner's Association's wishes. They definitely will be forced into considering their point of view when it behooves the property owners to move out of town.



Hardin

## Position 6 — Hecox —

Louis Hecox, 44, 300 Kyle, assistant vice president at R. B. Butler, Inc.

**Do you favor the merger of the city and school tax offices? What are the advantages (or disadvantages)?**  
Yes, I do. There's a tremendous waste in having two boards of equalization and two evaluation boards. It's surprising to me that my city evaluation is different from my school evaluation. So something is bad or wrong, and I don't know which. Maybe the city is too high and the school is too low, or vice-versa. But if a place is valued at something, it should be this value everywhere, and not just at the school or just at the city.

**Do you favor the car tax instituted by the school tax-assessor?**  
No, I don't think it's a very un-

fair tax. Everyone that's residing in the city doesn't register their car with our county here, and that's the only way they can get the registration roll — off the county roll. And so all of those who register their cars in some other county are not paying the tax, they're not even being billed for it.

**Why do you feel the school tax office appraisals are higher than the city tax office appraisals of the same property?**  
I don't know. That's one reason why I'd like to be on the school board, maybe I can find out.

**How seriously will the school board take the efforts of the Property Owner's Association?**  
I'm not in complete favor of all of the things the Property Owner's Association are doing. I'm not a member now. I was a member last year. I joined because I was in-



Hecox

terested in knowing what they intended to do and how they intended to go about it, primarily.

(see HECOX, page 9)

(Editor's note: See p. 11 for other Position 6 School Board candidates.)