

You can count on FedMart for savings on meat

Beef T-Bone Steak
Loin cut, tail removed
USDA Good
1.97 lb.



Beef Porterhouse Steak
Loin cut, tail removed
USDA Good
2.07 lb.



Boneless Tip Roast
Beef Round
USDA Good
1.47 lb.

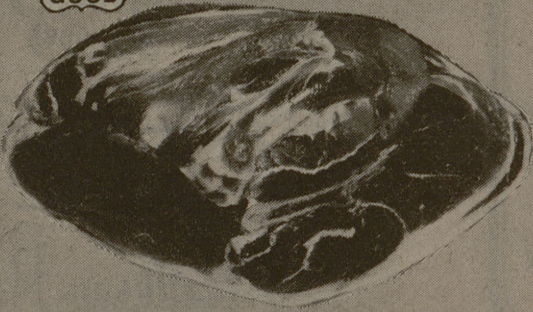


Beef Top Sirloin Steak
Loin cut boneless
USDA Good
1.97 lb.

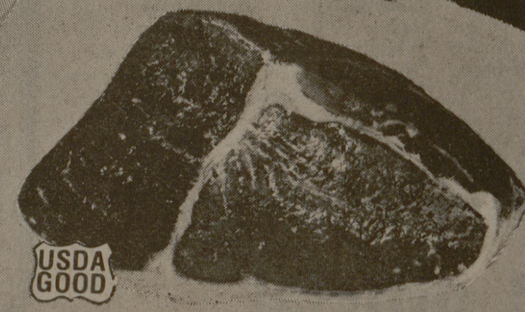


Rump Roast
Beef Bone-in
USDA Good
1.17 lb.

Smoked Pork Shoulder Roast
Picnic Cut
Water Added
.77 lb.



Beef Round Steak
Bone in
USDA Good
1.17 lb.



Your favorite cuts of beef are also available at FedMart in the USDA Choice grade.

Shop FedMart and save a bushel

Fleischmann's Egg Beaters
Two 8 oz. tubs
.89

Oscar Mayer Smokie Links
12 oz.
.99

Oscar Mayer Sliced Bacon
1 lb.
1.49

Pillsbury Crescent Rolls
pkg. of 8 8 oz.
.43

Broccoli
Fresh and flavorful,
.45 lb.

Cabbage
Fresh, firm,
lb. **.17**

Large Tomatoes
Red, ripe, beefsteak
.39 lb.

Iceberg Lettuce
Large heads,
.33 each

Coffee-mate Non-dairy Creamer, 16 oz.
1.09

Folger's Flaked Coffee
13 oz.
2.47

Fireside Saltine Crackers
1 lb.
.39

Kraft Cheez Whiz
Plain or jalapeño
16 oz.
1.39

FedMart*

*the spot for smart shoppers

For your convenience

Now open Saturday — 9:00 a.m. to 9:00 p.m.

Compare price. Compare quality.
Crinkle Cut Potatoes

FM Brand 2 lbs.
.69

Ore Ida Golden Crinkles
2 lbs.
.79

Compare price. Compare quality.
Blueberry Muffin Mix

FM Brand 13 1/2 oz.
.55

Duncan Hines 13 1/2 oz.
.69

Compare price. Compare quality.
Concord Grape Jelly

FM Brand 32 oz.
.79

Welch's 32 oz.
.89

Compare price. Compare quality.
All Meat or All Beef Wieners

FM Brand 1 lb.
.85

Rath 1 lb.
.95

FM Buttermilk Biscuits
pkg. of 10 7 1/2 oz.
.11

Kraft Squeeze Parkay
1 lb.
.59

FM Premium Pancake Mix
4 lbs.
.79

Log Cabin Syrup
24 oz.
1.09

Bold 3 Detergent plus Fabric Softener, 84 oz.
2.19

Joy Dishwashing Detergent, 22 oz.
.85

FedMart* the spot for smart shoppers

Dallas: E. Northwest Hwy. (at Jupiter Rd.)
Forest Lane & Marsh Lane
Houston: Mykawa Rd. & Loop 610
4004 Bellaire Blvd. (at Weslayan)
Wirt Rd. & Kenwood (W. 34th)
Spring Branch
Pasadena: 4616 Spencer Highway (at Preston)
College Station: 701 University Drive East
(at Tarrow St.)
San Antonio: S.W. Military Rd. & Zarzamora
Northwest Loop #410
(at Vance Jackson Rd.)
Victoria: E. Mockingbird & Laurent Streets
Brownsville: Boca Chica & Central Ave.

Food stamps gladly accepted.
Prices subject to change March 6, 1978

History pro will lecture on France

Dr. Archibald Lewis, professor of medieval history at the University of Massachusetts will lecture on "French Medieval South and North" next Wednesday at the 206 Memorial Student Center. Lewis obtained B.A., M.A., Ph.D. degrees from Princeton University. He also taught at the University of South Carolina and the University of Texas. He has been in the UT history department from 1958, and in 1963. Lewis is the author of many books, several of which are on France.

Teaching faces depressed pay, reduced quality

College students who want to move into some other field are finding that the teaching profession is a declining one. Timothy Weaver, associate professor of education at Boston University, Weaver found that the verbal "Scholastic Aptitude Test" scores of those choosing teaching had gone down by 50 to 100 points between 1970 and 1975.

The situation is expected to get worse as more teachers die and fewer enter the profession. But while the teacher shortage is being discussed through its balancing act, the quality of students selecting education as a major is declining, says Weaver. Weaver found that the verbal "Scholastic Aptitude Test" scores of those choosing teaching had gone down by 50 to 100 points between 1970 and 1975.

This is a much greater decline than the national average in the college aptitude test. The aptitude scores of those selecting education as a major also down significantly from 1970 to 1975.

The tight job market for graduates has led students with special abilities to go into other fields. Weaver says.

In a report in Education, a newsletter for school leaders, says, "Left behind is the student who don't have such options."

"Engineering went through the same experience during the 1970s and some schools of engineering eased their strict entrance policies almost to open enrollment to fill their classes."

Weaver sees the decline in test scores among teacher candidates "particularly alarming." A number of studies show verbal ability of a teacher is a variable that makes a significant difference in student learning.

Deans of education maintain they are keeping standards. Weaver disagrees. "The data I have, including scores of those trying for graduate school, show otherwise," he says.

If the need for teachers during the mid-1980s as predicted, Weaver says that the more potential teachers will be needed from the current reserve pool estimated at 500,000 — that among new graduates.

The decline in quality of education majors also has "powerful implications" for the development of leadership in education, Weaver said. From the pool of teachers come the professors of education and administrators.

"Our next generation of educational leaders is now entering schools of education," he says. Weaver said the education profession has not responded to the educational market. The schools of education see themselves as factories for the schools.

But they ignore the need for formal learning complexes outside the schools. Weaver says these include the military, health care fields — which have increased their education functions enormously.

Some estimates show that the peripheral area of learning is \$44 billion-a-year annual industry. Yet this development has been ignored in the curriculum colleges of education, says Weaver.

"For the most part, education trainers have ignored what is going on outside the school system. If they paid some attention to these theories, they would be able to show interested students the opportunities in education outside the traditional public schools. And then?"

The schools of education are again attracting high level students. These students would develop the top quality educational leaders needed for the last part of the century.

THE BATTALION DOES IT DAILY
Monday through Friday