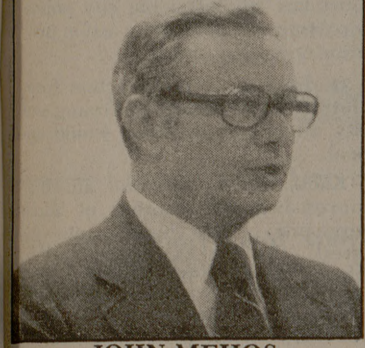


Texans' fishing protected by 200-mile boundary limit

By KAYCE GLASSE
The Fishery Conservation and Management Act of 1976 (FCMA), is providing fish for recreational fishing and consumers in the long run, and for the industry immediately, said John A. Mehos in a lecture last night.

The 200 Mile Limit—Progress



JOHN MEHOS

Towards Fisheries Management in the Gulf of Mexico" was the topic presented by the Department of Wildlife and Fisheries Sciences. Mehos is chairman of the Gulf of Mexico Regional Fisheries Management Council which applies the FCMA to the Gulf Coast area.

Mehos said one reason for the act was to provide fishing in these waters for domestic fishermen only. It also "gave people in the industry the opportunity to allow us to manage fisheries within territorial boundaries of the Gulf Coast."

The word "fishery," Mehos said, refers to "the catch of a specified fish or sea product."

The 200-mile limit extends from the southernmost tip of Texas around Brownsville to the Florida Keys.

The territorial boundaries of the Gulf Coast extend out from the coast for nine marine miles along Texas, and less along Louisiana, Alabama,

Mississippi and Florida. A marine mile is equal to approximately 1.1 land miles.

For recreational fishermen, the act meant limiting fishing trips so there would be more fish. Enforcement by the Coast Guard also would prevent fishermen from other states' waters from fishing in Texas waters. This rule applies to the other states as well.

Mehos said good management has been the objective and goal of the FCMA.

"This gives us the opportunity for the first time to manage fishing on a comprehensive and regional basis rather than state by state," he said.

For the consumer, he said the act would mean more fish and lower prices in the long run by restricting the fishing to domestic fishermen.

MONDAY'S BEER \$1.25
Pitcher

Bumper Pool
Air Hockey
Pool Tournaments
Foos Ball
Pinball

Tues. Nite 7:00
Sun. Afternoons 3:00

MURPHY'S TAVERN

"14 Beers on Tap"
Largest Selection in Texas

846-8146 (ACROSS FROM EAST GATE)

Get the Irish Spirit! Hallmark
© 1977 Hallmark Cards, Inc.

With colorful St. Patrick's Day cards and partyware. They're a bit of old Ireland!

YARBROUGH'S
Downtown Bryan
205 N. Main 779-9363

SOPHOMORE BALL PICTURES

Will be distributed in the MSC South Hall opposite the Post Office on Wednesday, 1 March. Hours 9-12 and 1-5. Bring your receipt.

A R PHOTOGRAPHY
3725 E. 29th Street
Phone 846-0487

CAMPUS ACTIVITIES

Tuesday
Science Career Workshop, sign up by calling 845-1741
FFA meeting, 7:30 p.m., 112 O&M building
Microbiology, Dr. Frank Young on "Impact of Genetic Engineering on Science and Society," 12 noon, 226 Evans Library
Baseball, St. Mary's vs. Texas A&M, 1 p.m., Travis Park
Mathematics, graduate lecture by Dr. Harold Diamond, 2 p.m., 216 Milner Hall
Great Issues, debate on nuclear energy by Dr. Bernard Cohen and Cong. Larry Tye, 8 p.m., Rudder Forum

Wednesday
Marshall-Harrison County Hometown Club, 7:30 p.m., 147 Rudder Tower
Bridge Club, 7:15 p.m., MSC
MSC Hospitality Committee, Fashion seminar, 7:30 p.m., 601 Rudder

Thursday
Pentagon Area Hometown Club, 8 p.m., 301 Rudder
Aggie Players, "A Streetcar Named Desire," 8 p.m., Rudder Forum
Aggie Cinema, "Long Days Journey Into Night," 8 p.m. and "Little Women," 10:30 p.m., Rudder Theater
CAMAC, Leonel Castillo, director of U.S. Immigration & Naturalization, 7:30 p.m., 206 MSC
Snow Ski Club, 7:30 p.m., 701 Rudder
Dance Arts Society, modern jazz, 7:30 p.m., 266 G. Rollie
Modern Languages, "Baroque Concert," 8 p.m., Rudder Theater
Aggie Players, "A Streetcar Named Desire," 8 p.m., Rudder Forum

Friday
Baseball, Houston vs. Texas A&M, 3 p.m., Travis Park

TEXAS A&M
Memorial Student Center

CAMERA COMMITTEE

presents

Salon 78

Entry fee: 75¢ per print
DEADLINE: MARCH 1, 1978

For complete rules, come by Student Programs Office, room 216, M.S.C.

FOLLOW THE SUN TO HAWAII

May 15-22

\$460 Triple
\$475 Double

Trip Price Includes:

- * Round trip Airfare from Houston
- * 7 Nights Accommodations at the Napualani (1½ blocks from Waikiki Beach)
- * Optional side trips to other islands
- * PLUS MUCH MORE!

\$100. Deposit must be made with application. Applications & Information Room 216 MSC. Ph.: 845-1515. Sponsored by MSC TRAVEL COMMITTEE.

Briefing March 2, 7-8 p.m. Room 216M of MSC

THE HI-FI SYSTEM FOR PEOPLE WHO'D PAY ANYTHING FOR GREAT SOUND. BUT HAVE LESS THAN \$500 TO SPEND.

from **GUSTOM SOUNDS**

THE PIONEER® STEREO ENSEMBLE... COMPLETE WITH A PLACE TO PUT IT!

Included in this system:

SA-6500 II INTEGRATED STEREO AMPLIFIER delivers a continuous power output of 30 watts per channel, minimum RMS at 8 ohms from 20 to 20,000 Hz. with no more than 0.1% total harmonic distortion. The bass/treble controls have 11 precision click-stops.

TX-6500 II AM/FM STEREO TUNER offers unexcelled tonal quality and superior reception in station-crowded areas with total harmonic distortion during stereo playback as low as 0.3% (1 Hz). The TX-6500 has unusually high sensitivity and is equipped with a phase-locked loop circuit in its FM multiplex demodulator section.

PL-112D TURNTABLE WITH PC-Q1 CARTRIDGE has so many great features, including a belt-driven 4-pole synchronous motor which is vibration-free, a wow and flutter of no more than 0.7% (WRMS) and a signal to noise ratio of more than 63 dB.

PROJECT-60A SPEAKER SYSTEM features a 2-way, 2-speaker system with impressive high performance. A specially-designed 8-inch woofer has a crossover frequency of 3,000 Hz to minimize distortion and achieve a rich, powerful bass.

SE-205 STEREO HEADPHONES are large cone type speakers that deliver rich sound reproduction.

VR-1 WALNUT-GRAINED CABINET

SALE PRICE \$499.00 \$805 IF PURCHASED SEPARATELY

*Sale through Saturday, March 4
Layaways & Financing Available*

GUSTOM SOUNDS

3806-A OLD COLLEGE ROAD
Next to Triangle Bowling Alley

846-5803
Open 10-6 Mon.-Sat.

"The Woofer" says:
Custom Sounds offers the widest selection of audio components in Aggieland at the lowest prices... and full service!