

Back-To-School Special

Sweaters Cleaned **\$1.00**

University Cleaners
112 College Main — Northgate

University Cleaners #2
West Bypass at Southwood
(Next to Doux Chene Apts.)

Offer Good Thru Jan. 31

Director urges agriculturalists to work on increasing funds

Scientists with the Texas Agricultural Experiment Station were served a number of challenges here Wednesday, Jan. 4., including those of advancing technology and the constant problem of adequate funding of research.

Dr. Neville P. Clarke, Experiment Station director, told about 500 researchers from throughout the state that there has been a

change in thinking on providing money for research and that agricultural scientists will need to adjust to those changes.

Most funds in the past have been provided on a national level through the traditional Hatch Act formula-based system, Clarke said. Increased emphasis is now being placed on competitive research grants.

On the national and state level,

there is more demand for explicit details on how research money is to be used, said the director of the state's agricultural research agency.

He added that President Carter's balanced budget announcements may have a limiting effect on research support. He also said there is "similar caution on the state level."

Clarke urged Experiment Station scientists to communicate more ef-

fectively with legislators representing urban areas, to plan and detail research more efficiently, and to be sure that basic research is goal-oriented and related to the public good.

He said the Experiment Station's current flexibility in research is "very fortunate." He challenged conference members to maintain that advantage.

The director also called for more collaborative research within the station, which he said is more impressive to fund sources than fragmented and individual research projects.

Clarke's final challenge was a quest for improved communication with such sources of funds as business and industry.

An impromptu appearance at the conference was made by Dr. James E. Miller, president of Texas A&M University and immediate past director of the Experiment Station. Director Clarke presented the president with an engraved plaque recognizing Miller's "outstanding leadership and dedicated service to the station."

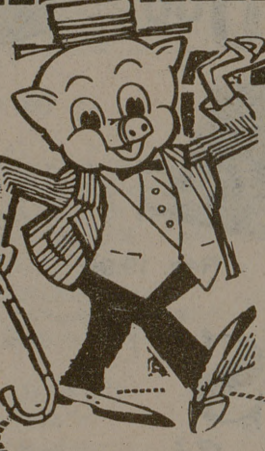
Following the presentation, Miller told the group that the A&M Board of Regents appreciates and wants "top flight agricultural research."

He said that as president he is meeting many leaders in business, industrial and scientific fields who tell him A&M graduates are of superior and perform well in their careers.

The guest speaker at the conference's opening session was T. J. Banglow, chairman of the board and chief executive officer of the world's largest oilseed crusher — Anderson, Clayton and Company of Houston.

He described the Experiment Station's research and development (R&D) as "impressive and outstanding," and essential to agriculture and economic health. He noted that U.S. agricultural exports are being kept "keep this country aloft" and are paying for much of the oil imports from the Middle East.

R&D is costly and time consuming, whether it is with the Texas Agricultural Experiment Station or Anderson, Clayton and Company, but the need is always there, speaker emphasized.



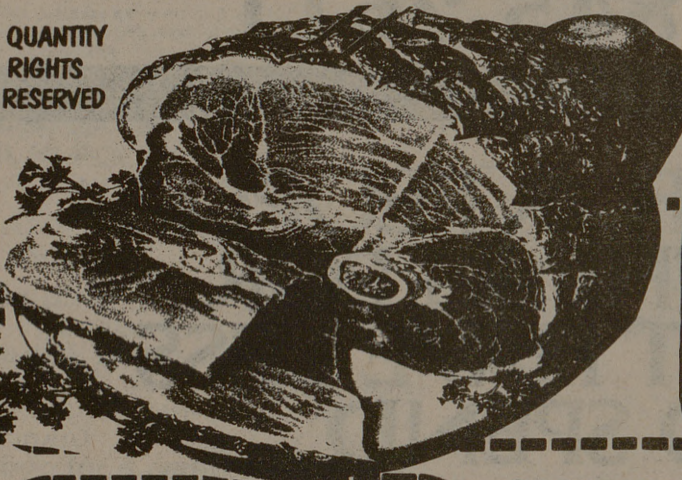
Friday the 13th IS LUCKY IF YOU SHOP PIGGLY WIGGLY

THESE PRICES GOOD THURS., FRI., & SAT., JAN. 12, 13, & 14, 1978

SIRLOIN STEAK

Swift Protein lb. **1.48**

QUANTITY RIGHTS RESERVED



HALF HAMS

Neuhoff Hickory Smoked Butt cut lb. **99¢**

HAM

NEUHOFFS HICKORY SMOKED SHANK PORTION

LOCAL GAMERAMA WINNERS LISTED AT ALL STORE LOBBIES

Play the all New Series "3" As of December 30, 1977

PRIZE VALUE	REMAINING # OF PRIZES	ODDS FOR 1 store visit	ODDS FOR 5 store visits	ODDS FOR 10 store visits
1,000.00	99	212,329 to 1	42,466 to 1	21,233 to 1
100.00	258	15,053 to 1	3,011 to 1	1,505 to 1
20.00	548	7,362 to 1	1,472 to 1	736 to 1
5.00	2,043	1,975 to 1	395 to 1	197 to 1
2.00	7,071	571 to 1	114 to 1	57 to 1
1.00	48,830	83 to 1	17 to 1	8.5 to 1
total # OF PRIZES	58,779	69 to 1	14 to 1	7 to 1

This game is being played in the night-hon participating Piggly Wiggly Stores located in Northeast Texas, Southern Arkansas, Western Mississippi and Louisiana.



NEUHOFFS FRANKS

Regular or Beef 12 oz. pkg.

66¢

Family Pack **CUT UP FRYERS**

2 breast portions with backs
2 leg portions with backs
2 wings plus giblets
lb. **39¢**

CATFISH STEAKS
CORNY DOGS
HOT LINKS
FRYER LIVERS

Fresh Water Bone-In lb. **89¢**
Woody's 8 ct. pkg. \$1.29
21 oz. pkg.
Lee Trevinos lb. **89¢**
5 lb. box **2.59**
lb. **69¢**

SMOKED SAUSAGE Neuhoff lb. **1.19**
SMOKIE LINKS Neuhoff 12 oz. pkg. **99¢**
DINNER TIMER FRANKS Neuhoffs 1 lb. pkg. **89¢**
LUNCH MEATS Neuhoff assorted 6 oz. pkg. **49¢**

Armour Star **CORNISH HENS**

16 oz. size each **99¢**



COFFEE

Maryland Club

2.68

HEALTH AND BEAUTY AIDS

CONTACT Cold Capsules 10 ct. pkg. \$1.09
List \$2.09
TOOTHBRUSHES Pepsodent 3 for \$1
CLOSE-UP Toothpaste 6.4 oz. tube List \$1.65 **99¢**

FROZEN FOOD DEPT. SPECIALS

PIZZAS Torino's all kinds 13 oz. pkg. **79¢**
CHICKEN Banquet fried 2 lb. cin. **1.89**
TATER TOTS Oro-Ida 2 lb. bag **69¢**

WOOD

Just one of the hundreds of topics in VOLUME 22 **BRITANNICA JUNIOR ENCYCLOPAEDIA** on sale this week **\$2.99**
VOL. ONE 49¢
DOUBLE BONUS OFFER SAVE 15.98
Details at store

FLOUR

GLADIOLA

5.58

CRISCO 3 lb. can **1.59**
Coke or Tab 6-12 oz. cans **1.19**

CRACKERS Nabisco 1 lb. box **59¢**
RAISINS Piggly Wiggly seedless 15 oz. pkg. **79¢**

ICE CREAM Blue Bell 1/2 Gal. cin. **1.59**

Old Milwaukee **BEER**

6-12 oz. bottles **99¢**

PORK & BEANS Showboat 4 15 oz. cans **1.30**
COOKIES Sunbeam assorted 4 pkgs. **1.41**
KING KOOLER Soft Drinks 5 liter bts. **1.41**
BEANS Van Camp Kidney Beans 3 15 oz. cans **1.30**
PUDDINGS Hunt's New Orleans style 4 5 oz. cans **69¢**

POTATOES

US #1 RUSSETS

10.99

NAVEL ORANGES Fancy Calif. 3 lbs. **99¢**
CUCUMBERS Super Select each **19¢**
LEMONS Sunburst Juicy 3 for **39¢**
YELLOW ONIONS US #1 lb. **15¢**
WAXED RUTABAGAS US #1 lb. **15¢**

Double S&H Green Stamps every Tuesday with \$2.50 or more purchase.



4300 Texas Ave.
3516 Texas Ave.
200 East 24th St.
9 Rodmond Terrace

COLLEGE STATION and BRYAN, TEXAS

we welcome FOOD STAMP SHOPPERS

WE GIVE S&H GREEN STAMPS

DAILY RENTALS
We Pick Up & Deliver
BUD WARD VOLKSWAGEN INC.
693-3311

Embrey's Jewelry
We Specialize In Aggie Rings, Diamonds Set — Sizing — Reoxidizing — All types watch/jewelry Repair
Aggie Charge Accounts 9-5:30 846-5811

PREPARE FOR: Our 40th Year
MCAT • DAT • LSAT • GRE
GMAT • OCAT • VAT • SAT
NMB I, II, III, ECFMG • FLEX • VQE
NAT'L DENTAL BOARDS
NURSING BOARDS
Flexible Programs & Hours
There IS a difference!!!
Stanley H. KAPLAN
EDUCATIONAL CENTER
Test Preparation Specialists Since 1938
For Information Please Call:
11300 N. Central Expwy. Suite 407
Dallas, Tx. 75243 (214) 750-0317
in College Station: 846-1322
PLEASE VISIT OUR CENTER
CLASSES FORMING NOW
for SPRING '78 EXAMS

Tupinamba
Eddie Dominguez & Joe Arciniega 74
Pop chose who demand the Real Thing!
If you want the real thing, not frozen or canned... We call it "Mexican Food Supreme."
Dallas location: 3071 Northwest Hwy 352-8570