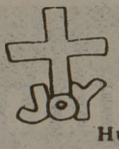


**PRAY PRAISE**  **UNIVERSITY LUTHERAN CHAPEL**  
315 N. Main  
846-6687  
Hubert Beck, Pastor

**GIVE THANKS**

WORSHIP SERVICES AT 9:15 A.M. AND 10:45 A.M.  
WORSHIP CELEBRATION AT 6 P.M.  
Bible Studies Available

WE ALSO DRAW YOUR ATTENTION TO OUR WEEKLY CANDLELIGHT COMMUNION SERVICE THAT HAS JUST BEGUN. WEDNESDAY EVENINGS AT 10 P.M. IS AN EXCELLENT OPPORTUNITY TO RENEW YOURSELVES IN MIDWINTER!

NEW LIFE IN CHRIST

# SCA: modern club has medieval interests

By JEANNE GRAHAM  
Lords and ladies gather near the Grove at Texas A&M University every Tuesday evening to watch and participate in medieval combat.

The lords and ladies, as they call each other, are members of the Society of Creative Anachronisms and this "fighter practice" is one of the group's activities.

"The society is dedicated to the study and re-creation of medieval life, customs, arts and sciences,"

Charles Butler, administrative officer, told new members recently.

The SCA is an international, non-profit, educational group. It started 12 years ago in Berkeley, Calif., when a group of students and other interested people held a May Day celebration. A medieval tournament re-creating combat with broadsword and shield was featured as well as singing, dancing, poetry, and other aspects of medieval culture. The event was so well received, it expanded throughout the

country and national membership is about 7,000.

Each SCA group in the United States is called a shire or barony, depending on its size, said Cathy Rylander, mistress of Arts. Groups of shires and baronies make up the five kingdoms in the country.

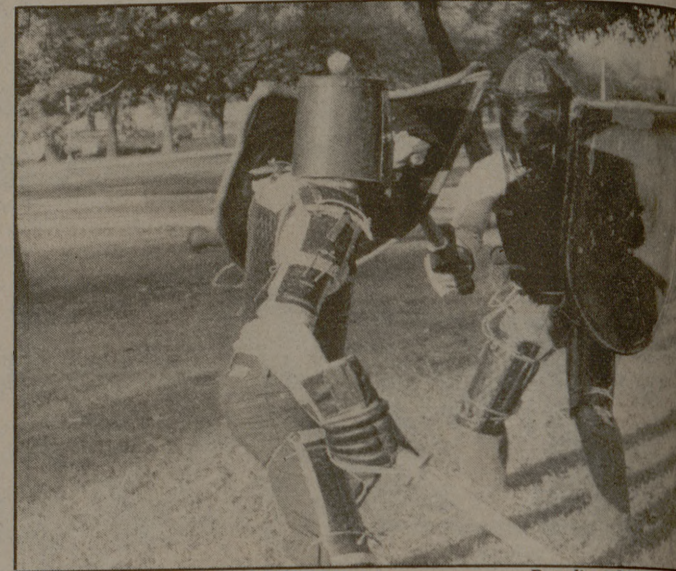
At A&M, the SCA is a shire (one society) in the barony (one region) of Ansteorra in the kingdom (6 states) of Atenveldt. The barony, Ansteorra, means "star without peer — or lone star," Rylander said. The Kingdom of Atenveldt includes Colorado, Oklahoma, Utah, New Mexico and Louisiana, as well as Texas.

Organized into shires and kingdoms, individual members re-create medieval characters. Ed Graham, a Texas A&M junior, becomes "Edward MacGraeme," a Scottish-Barbarian from 845 A.D. when he is attending an SCA function. Member Ruth White becomes "Aleana of Wyhte," of Welsh descent, when she encounters another society member on campus.

"These are not historical characters out of literature," Rylander explained. "The members create a character who might have existed in a time period that interests them." Each member then makes a costume and takes on a personality to fit his medieval character.

"We relive the better parts of the Middle and Dark Ages," Graham said.

Fighting seems to be the society's main attraction. Combat with broadsword and shield is held across the "kingdom" three times a year to determine who will be "monarch." "Knights" are chosen in the society by the skill demonstrated with the basic weapons.



Crash! Bang! Makeshift armor is a must when the SCA stages its not-so-mock battles.

Fortunately, these weapons are not the traditional steel of medieval broadswords, but are made from rattan wood, padded and wrapped in duct tape to simulate the weight and handling of steel. Protective gear made of rattan, plywood, packing straps or chain mail is worn by fighters.

Demonstrations are given at area festivals, and challenges are held between the shires.

In addition to learning medieval combat skills, the SCA offers various guilds to learn crafts such as swashbuckling, costume-making, pottery, sewing and medieval writing.

The SCA at Texas A&M was

formed this semester and registered members with unregistered members participating in the activities. Requirements for membership are simple and in the Middle Ages and the use of pre-1650 clothing to events, Rylander explained. They are \$1.50 a semester.

The SCA is presently participating in the Renaissance Festival Magnolia, Tex., giving demonstrations and running a booth called "Fight the Knights." "Most people sit around and dream," Sajira Fukushier (alias Ven Gould) said. "We live our fantasies."

Students don't help support local churches

(Continued from page 1)

He added the students don't contribute much to the A&M Methodist Church, which most of them attend. "Probably most of their money comes into us," he said.

R. D. Dovers, assistant pastor of the College Heights Assembly of God, said that though his church has a large student program, "we draw any support from our students."

But like many of the churches, he said most of the members enjoy providing the activities and instruction for the students.

"They've done it for years as long as the church has been here," he said. "Students attend Dovers said."

The A&M Church of Christ is one of the largest churches in the area. About 500 students are active in their college program. In addition, the church organizes trips to different churches in the state, and even missions to places like Thailand. The church also operates a school of evangelism.

"Most students don't contribute much at all. Most of the money comes from local members," said Bob Davidson, youth minister. "We've had several students who were skipper's son and he gave me \$100 a week. That's rare. Most are poor."

## Tower Dining Room



Serving Luncheon Buffet Sunday through Friday 11:00 A.M. to 1:30 P.M. \$3.00

Top Floor of Tower Dining Room Sandwich & Soup Mon. thru Fri. \$1.75 plus drink extra

Open to the Public

"QUALITY FIRST"



Try The Pawn Shop.

### Texas State Pawn Shop

LOANS ON ANYTHING OF VALUE

BARGAINS IN GUNS, DIAMONDS, SPORTING GOODS, TV'S, STEREO'S, CB'S

3511 Texas Avenue Bryan, Texas 77801 (713) 846-3228

HURRY!! IT'S OUR LAST DAY ON CAMPUS PEACE CORPS VISTA



Information Booth: Student Center

Interviewing Seniors-Grads PLACEMENT OFFICE Rudder Tower 10th Floor

### MANOR EAST 3 THEATRES

MANOR EAST MALL 823-8300

7:40-9:40 MORE **Bad NEWS** THE BAD NEWS BEARS ARE ONE YEAR OLDER AND ONE YEAR WILDER

ALL NEW THE BAD NEWS BEARS in BREAKING TRAINING

PG COLOR A PARAMOUNT PICTURE

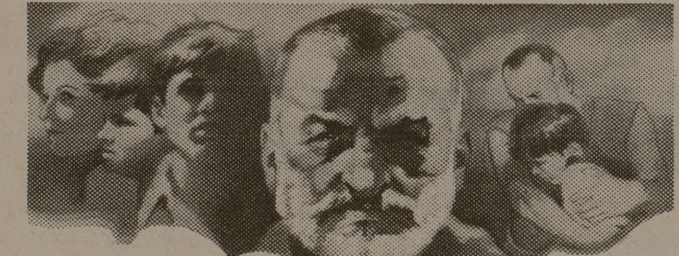
DOLBY 4-CHANNEL STEREO PHONIC SOUND 7:30-9:55



The Other Side of Midnight

R 8:15

STARTS FRIDAY



George C. Scott A Franklin J. Schaffner Film "Islands in the Stream"

WEST **Skyway Twin** EAST 822-3300 GREASED LIGHTNING PLUS HUSTLE ORCA-KILLER WHALE PLUS KING KONG

Campus 846-6512 COLLEGE STATION

STARTS TODAY



The Fikus Family: They're Not Roasted. They're Not Salted. They're Just Plain Nuts.

PG 1977 20TH CENTURY-FOX. COLOR BY DELUXE

FRI.-SAT. MIDNIGHT SHOW FUN WITH DICK AND JANE ALL SEATS \$1.00

### abc INTERSTATE Theatres

UNIVERSITY SQUARE SHOPPING CENTER 846-6714 & 846-1151 "SAILOR WHO FELL FROM GRACE WITH THE SEA" (R) FRI, SAT

CINEMA I Starts FRIDAY!

A different kind of... love story. OPEN 7:15 FRI. 7:50 9:45 SAT. & SUN. ALSO 1:00 2:40 4:20 6:00 AFTER FREE HALLOWEEN SHOW



MARTY FELDMAN ANN-MARGRET MICHAEL YORK

PETER USTINOV and JAMES EARL JONES "THE LAST REMAKE OF BEAU GESTE" TREDOR HOWARD · HENRY GIBSON · TERRY-THOMAS

CINEMA II Starts FRIDAY!

An ABC Encore Presentation

OPEN 7:15 FRI. 7:30 9:30 11:30 SAT. & SUN. ALSO 1:30 3:30 5:30 SAT. ALSO 11:30

LAST HALLOWEEN SHE SCARED YOU TO DEATH! Now she's back TO DO IT AGAIN! "CARRIE"

starring Sissy Spacek JOHN TRAVOLTA and PIPER LAURIE

LAST DAY! NOW PLAYING! LAST DAY!

Why have they come? LAST SHOWS 7:50 9:40 "STARSHIP INVASIONS" ROBERT VAUGHN CHRISTOPHER LEE

SUPERIA LAST SHOWS 7:30 9:25

## The Political Forum

presents **Senator Walter Mengden. "Republican Re-emergence in Texas"**

Tuesday, November 1, 1977 Room 206 MSC 12:30 P.M.



step into the msc