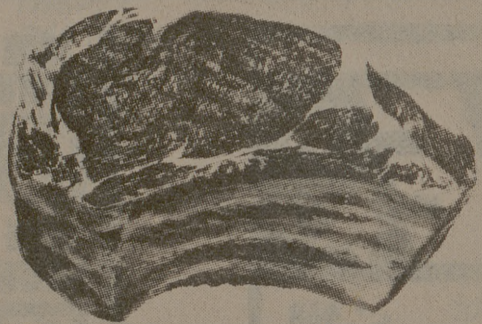




Regular Ground Beef  
**.59** lb.



Beef Rib Roast  
Small End, USDA Good,  
**1.49** lb.

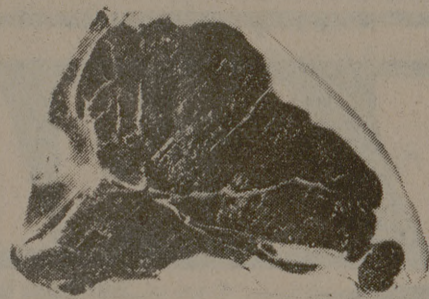


Beef Chuck Roast, 7-Bone Cut,  
USDA Good,  
**.79** lb.

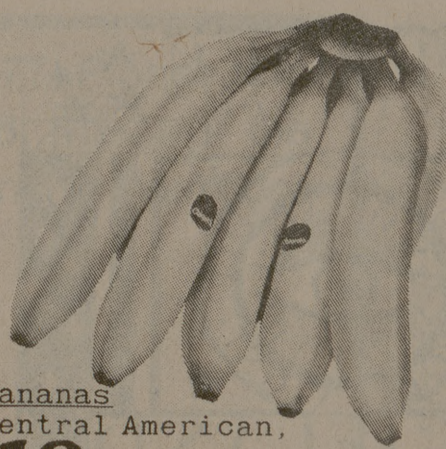
Beef Rib Eye Steak, USDA Good,  
**2.39** lb.

Sirloin Steak, Beef Loin,  
USDA Good,  
**1.49** lb.

Fryer Breasts, Ribs Attached,  
**.89** lb.



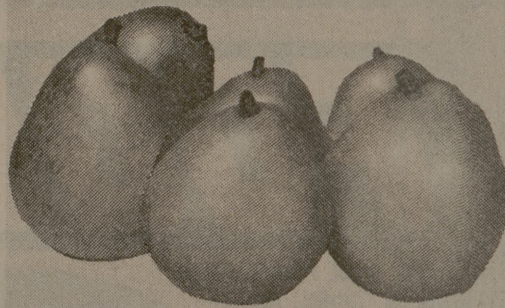
T-Bone Steak  
Beef Loin, USDA Good,  
**1.75** lb.



Bananas  
Central American,  
**.18** lb.



Pineapple  
Large,  
sweet,  
**.49** ea.



Anjou Pears  
**.75** 3 lb. pkg.

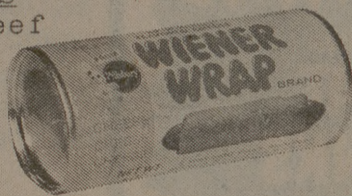


Navel Oranges  
**.09** each



FM Wieners  
Meat or Beef  
1 lb.  
**.69**

Pillsbury  
Wiener Wraps  
Plain or  
Cheese  
4 oz.  
**.27**



Swanson Fried Chicken Dinner  
1 1/2 oz.  
**.69**

Ore Ida Potatoes O'Brien,  
24 oz.  
**.59**

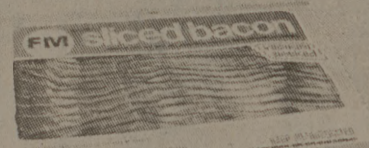
Durkee Coconut Flakes,  
14 oz.  
**.89**

Top Test Mandarin Oranges,  
11 oz.  
**.33**

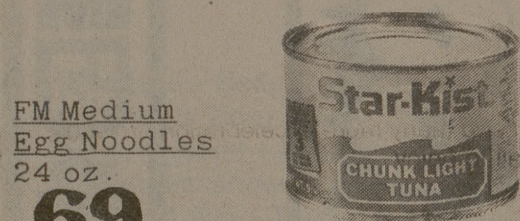
Kraft Mini Marshmallows,  
1 lb.  
**.43**

FM Sliced  
1 lb.  
**.97**

Bacon



Rath  
1 lb.  
**1.19**



FM Medium  
Egg Noodles  
24 oz.  
**.69**



Star-Kist  
Chunk  
Light Tuna  
6.5 oz.  
**.55**



FM Soft  
Margarine  
2-8 oz. tubs  
**.45**

Pillsbury  
Buttermilk  
Biscuits  
8 oz.  
**.12**



Ever Fresh Glazed Donuts  
14 oz.  
**.59**



FM Applesauce  
25 oz.  
**.49**

Quaker  
Instant Oatmeal,  
Regular,  
10 oz.  
**.55**



FM Mayonnaise  
32 oz.  
**.89**

FM Sliced  
Proc.  
American  
Cheese,  
12 oz.  
**.99**



Hebrew National Kosher Meats,  
12 oz.  
**1.09**

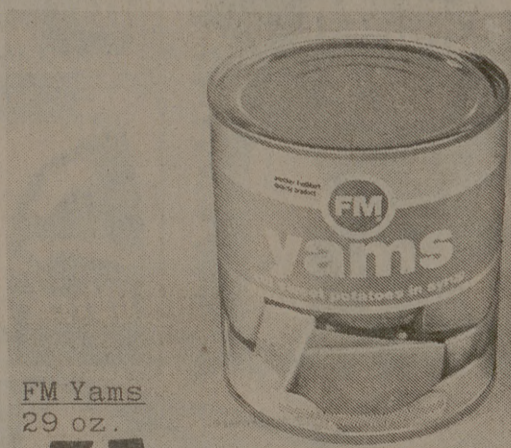
Francisco French Bread,  
16 oz.  
**.59**

Claussen Dill Pickles,  
whole or sliced, 32 oz.  
**.95**

FM Frozen Pot Pies,  
asst., 8 oz.  
**.25** each



Godchaux  
Sugar  
Light Brown  
or Powdered  
1 lb.  
**.29** each



FM Yams  
29 oz.  
**.35**

# FedMart\*

\*the spot for smart shoppers

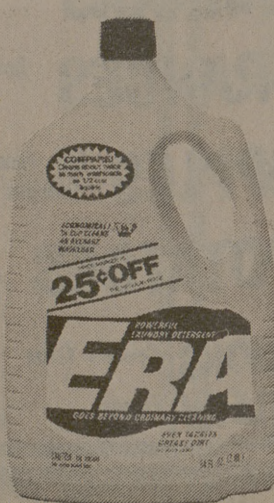
40¢ Off Label,  
Breck  
Lasting Hold  
Non Aerosol  
Hair Spray  
Super or Super  
Unscented  
8 oz.  
**.99**



13¢ Off Label,  
Dawn  
Liquid  
Dish  
Detergent  
22 oz.  
**.69**



25¢ Off Label,  
Era  
Liquid  
Laundry  
Detergent  
64 oz.  
**2.09**



FedMart\*  
the spot for  
smart shoppers

College Station: 701 University  
Drive East (at Tarrow St.)

Prices subject to change Monday, March 28, 1977.

## Animals may foresee earthquake

United Press International  
WASHINGTON — There may be something in the idea that animals can sense forthcoming earthquakes time to warn humans. The idea is not new. It goes to the 1700s in China and Chinese seismologists now use strange animal behavior as a key part of national earthquake prediction.

Scientists in the United States not pay much attention to reports until animal behavior to have had a major role in the successful prediction of the earthquake in 1975 in the Liaoning Province.

Among the observations reportedly were that snakes came out of hibernation, small pigs and other, cows fought and dug, deer ran away, turtles jumped the water and cried, a hen flew tree top, chickens flew blind, geese panicked.

Spurred by that report and other observations in other parts of the world, a group of seismologists, geologists and biologists met under Geological Survey sponsorship in October in Menlo Park, Calif. to discuss the phenomena.

In a just-issued 429-page report on the conference, the scientists concluded that there may be truth to the belief that animals sense some environmental changes that precede tremors.

Dr. John M. Logan, of Texas A&M University, said in summarizing the meeting that some of the reports were quite skeptical when he went to the symposium but he was convinced the animal behavior had scientific merit.

"The correlation between animal behavior patterns and the earthquake is very convincing," Logan said. "Hopefully, future work will lead to a level of scientific prediction for mankind."

Dr. Benjamin Hart of the University of California at Davis said lines of seemingly unrelated observations search add credence to the theory.

One is that seismologists have found there may be a wide range of environmental changes preceding an earthquake. The other is that animals have shown animals have systems that can react to stimuli that would not be perceived by humans.

Dr. Jack Evernden, a Geological Survey geophysicist, compiled the report, said animal behavior during earthquakes already have started in the United States.

He said it must be assumed an animal can sense an environmental signal strong enough to affect behavior before an earthquake. Scientists can design equipment to measure such animals.

One hypothesis is that animals may sense a small change in the magnetic field before an earthquake. Another is that animals are preceded by sounds that humans cannot hear but animals can.

## Real-life Dennis troubled by than Mr. Wilson

United Press International  
COLUMBUS, Ohio — Dennis isn't the only one who looks like Dennis the Menace. Dennis Ketcham, the 13-year-old son of cartoonist Ketcham, said he "always" was modeled after him.

The real Dennis spent his early years in a boarding school, combat with the Marines, and has worked the last months as a guard at the Penitentiary. He lives with his mother and child in nearby Circleville.

Ketcham said his counterpart made growing up the more difficult. "I was harassed all the time in school. Kids were always doing something to me. It took years to get used to it. I resented him (the comic Dennis Menace)."

Ketcham said he was 13 years old when in 1951 he conceived his famous alter ego, the passion for ketchup and a penchant for trouble.

"I don't remember it much, pretty average growing up," he told me my father came home one day after I had been into school. "My mother told him I was a real menace."

Alice Ketcham, also known as the comics, died when Ketcham was 13. His father put him in a boarding school.

"I stayed all year. I learned to take care of myself. I didn't see my father a lot." Ketcham also said things were better between him and his father. He said he occasionally sees the man who lives with his new wife, daughter in Switzerland, and I've been married, we've been closer.