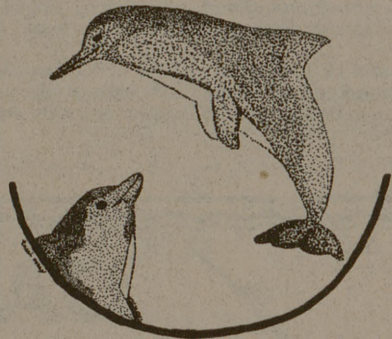


GREAT ISSUES

PRESENTS

Dr. John C. Lilly md

DR. JOHN LILLY HAS WORKED FOR YEARS ON SCIENTIFIC PROJECTS ATTEMPTING COMMUNICATION WITH OTHER INTELLIGENT SPECIES, RECORDING DOLPHINS COMMUNICATING WITH EACH OTHER AND DOLPHINS ATTEMPTING TO COMMUNICATE WITH HUMAN BEINGS.



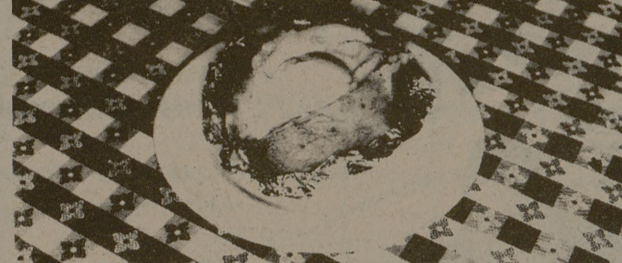
Interspecies Communication

Feb. 3 8 p.m. free with activity card
Rudder Theatre \$1 for others

step into the msc circle



POTATO \$4.50



Served with a thick 8 oz. Filet, hot baked potato or sweet corn on the cob, a fresh loaf of bread and a trip to our crispy fresh green salad bar. (and for your enjoyment try one of our new wines)

3C BAR-B-Q

810 South Main
822-8441
Open Everyday
But Monday 11-9

Aerobics Club

Shoe Sale Continued

The A&M Aerobics Club is selling New Balance Running Shoes to A&M students and faculty. This is not a money making project for the club, we just want to break even, for this reason we are able to sell the shoes for \$15.00 — they regularly run for \$20.00-\$25.00. You can purchase these shoes at G. R. White Col. Annex from 12:30 to 1:30 at Room 255. Here are the sizes left: 5D, EE; 5-1/2B, D; 6D; 6-1/2B; 7-1/2E; 8-1/2B; 9A, B, C, D, E; 9-1/2B, E; 10B, C; 10-1/2B, 11B.

IT IS NOT TOO LATE TO SIGN UP FOR CRAFT WORKSHOP

- | | |
|----------------------------|----------------------|
| Pottery on the wheel | Chair Caning |
| Pottery-handbuilding | Leather |
| Intermediate Pottery-wheel | Sand Terrariums |
| China Painting | Baskets |
| Drawing and illustration | Cake Decorating |
| Watercolor | Antique Refinishing |
| Jewelry-casting | Band Weaving |
| Copper Enameling | Off-the-Loom Weaving |
| Lapidary | Spinning |
| Macrame | Quilting |
| Advanced Macrame | Needlepoint |
| Macrame Pot Slings | Crochet |

Registration — Still open in the Craft Shop. Organizational Meeting February 3 at 7:30 P.M. in Room 226 in the MSC.

Most workshops begin the week of Feb. 7. For more information call 845-1631.

Positions Now Available

APPLICATIONS FOR MSC PRESIDENT, OFFICERS, AND COMMITTEE CHAIRMEN ARE NOW BEING TAKEN IN THE MSC STUDENT PROGRAMS OFFICE, RM. 216 OF THE MSC. ANYONE MAY APPLY.

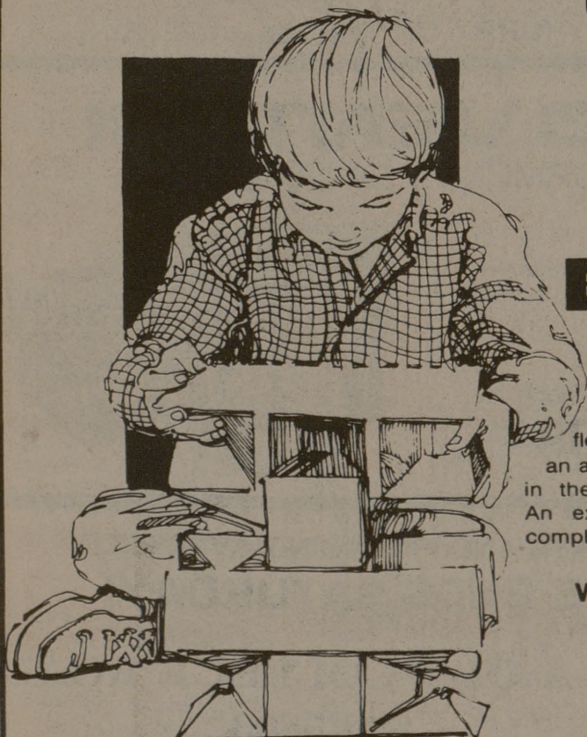
DEADLINES

PRESIDENTIAL APPLICATIONS - JAN. 24
OFFICER APPLICATIONS - FEB. 4
CHAIRMEN APPLICATIONS - FEB. 18



step into the msc circle

a career is something that begins early and stays with you a lifetime—consider the two best possibilities



Brown & Root

The opportunity and freedom to achieve your own goals is now available with Brown & Root, a major international engineering and construction firm. Our flexible organization allows you to become an active part of the team shaping the future in the engineering and construction fields. An excellent benefits and salary package complements your individual career potential.

We will recruit on campus on Friday, February 4, 1977



Aggie Cinema's Matinee Series Presents

BLESS THE BEASTS AND THE CHILDREN

Sunday February 6
2:00 P.M.
701 Rudder Tower
Admission: \$1.00 with TAMU I.D.



Advance Tickets Available in Rudder Box Office

Aggie Cinema's International Films Presents



Rudder Theater 8:00 P.M. Admission \$1.00 With Student I.D.

Wednesday February 1

Advance tickets at the Rudder Box Office

AGGIE CINEMA'S POPULAR SERIES Presents



R U D D E R T H E A T R E

F E B R U A R Y 4 & 5

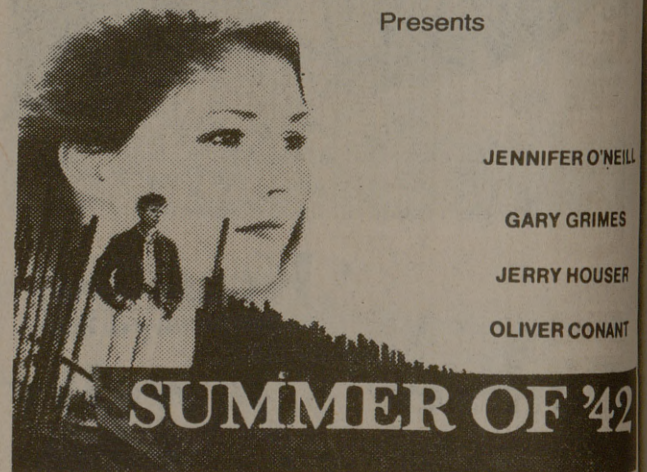
LUCKY LADY

8:00 P.M. Admission \$1.00 with TAMU I.D.



Advance Tickets Available at Rudder Box Office

AGGIE CINEMA'S MIDNIGHT SERIES Presents



Friday, February 4 12:00 Midnight

Rudder Theater Admission \$1.00 with student I.D.



Advance Tickets Available in Rudder Box Office

It's decaffeinated Barley considered as coffee substitute

Barley may soon be used as a coffee substitute in addition to being a prime ingredient of liquor and baby food.

The last two times barley was considered to fill this role was during the depression and World War II, but last year's coffee catastrophe and the resulting cost spiral has brought about renewed interest in substitutes.

Dr. Lloyd W. Rooney, associate professor of soil and crop sciences at Texas A&M University, shared some thoughts on the future of barley.

"I'm sure that the food industry research and development labs are working on an array of substitute products for coffee," Rooney said. "The 'hard times coffee' or 'poor man's coffee' is a mixture of coffee and roasted malted barley. The malted barley would be roasted for a longer time than usual to give it a darker color and more aromatic flavor.

"Many grains can be parched, ground and then steeped in warm water to produce a dark-colored extract or made into a crude slurry which was probably around a long time before coffee," he said. "I haven't tried them all but the taste isn't bad. Some are even quite good but they aren't coffee."

Rooney added a caution at this point. Do not try to prepare malted barley like regular coffee, he said. When it gets to the boiling point,

the starches tend to swell and into a jellied substance.

"Tannins, oil and caffeine all contribute to the flavor of coffee. You can't get with cereals," he said. "But, a mixture substitute for some of us would hurt at all. The caffeine wouldn't be a problem except for the real addicts."

"The introduction of coffee substitutes is a matter of economic concern," Rooney said. "Researchers will have to take the time to produce a synthetic that tastes and smells like coffee at a reasonable price."

"If manufacturers could capture the essence of coffee synthetically like they have with fruit flavors, and come up with a simulated coffee they might make a go of it," he said.

Consumers will also avoid the milligrams of caffeine that come with each cup. Researchers have traced this, some people, to sleeplessness, body discomfort, intestinal pain, headaches, etc., particularly among the 30 to 50 year-olds who are the heaviest drinkers.

"Back to malted barley—there are different kinds of malts for different purposes," Rooney said. "There is brewer's malt, distiller's malt and black malts."

"Black malts are used for coloring agents or coloring. It has enzymatic activity and is also used in breakfast cereals, sugar coatings, dark beers and is the useful for coffee substitutes."

Sun Theatres

333 University 846-9808

Super-Grody Movies

Double-Feature Every Week
Special Midnight Shows Friday & Saturday \$2 per person

No one under 18
Escorted Ladies Free
\$2 With This Ad

BOOK STORE & 25c PEEP SHOWS

SOPHOMORE BALL

Feb. 5 8:00 Zachry

THE SENTER-PIECE WOULD LIKE VERY MUCH TO BE A PART OF YOUR PLANS. WE OFFER A WIDE SELECTION OF BEAUTIFUL CORSAGES:

- ORCHID
- ROSES
- CARNATIONS
- MIXED SPRING AND
- NOSEGAYS & BOUTONNIERES

CALL AND PLACE YOUR ORDER EARLY!

846-0153

WE WILL DELIVER YOUR CORSAGE TO HER

315 TEXAS AVE.
COLLEGE STATION
ACROSS FROM RAMADA INN

10% OFF WITH THIS AD