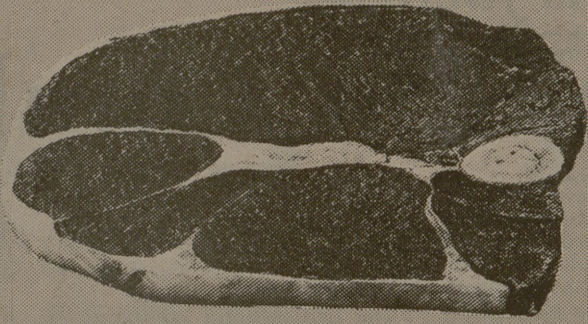
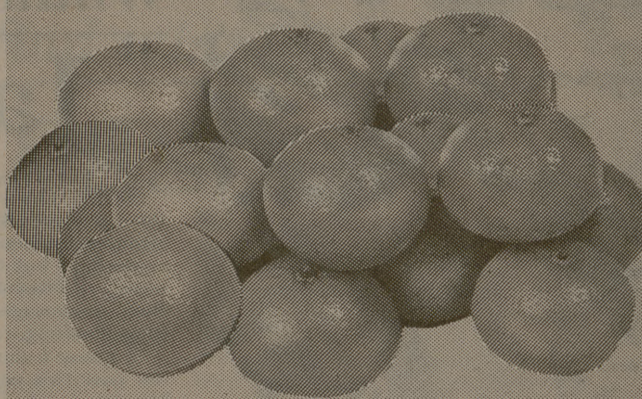


Extra Lean
Ground Beef
.99 lb.

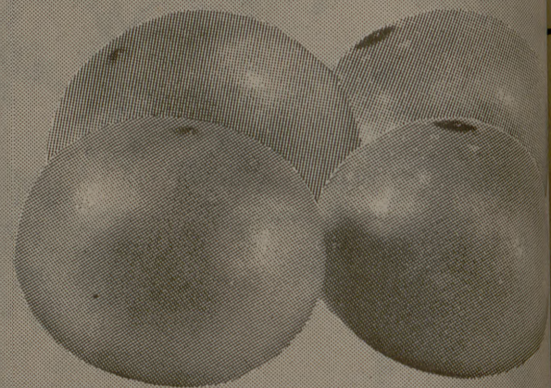
Regular
Ground Beef
.49 lb.



Beef Round Steak
USDA Good,
1.09 lb.



Tangerines, large,
.19 lb.



Grapefruit,
Texas ruby red,
.10 ea.



Beef Rib Eye Steak,
USDA Good,
2.29 lb.



Gold Medal Flour, 5 lb.
.69

Nabisco Premium Crackers, 1 lb.
.49

Stouffer Potatoes Au Gratin,
11 oz.
.65

Tree Top Apple Juice
12 oz.
.59

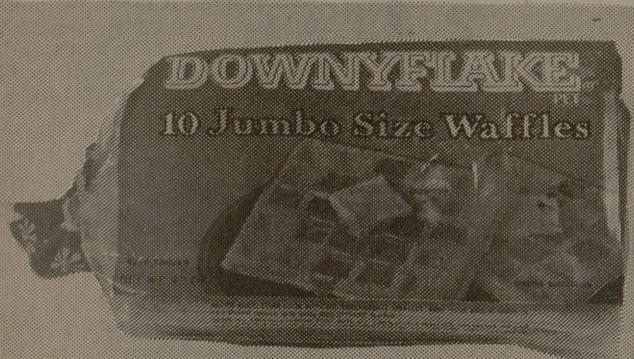
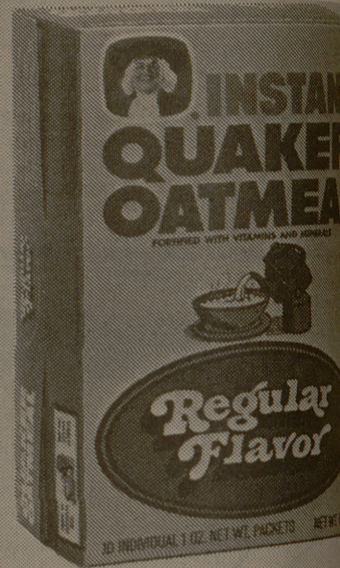
Red Delicious Apples,
Washington State,
.75 3 lb. bag

Golden Delicious Apples,
Washington State,
.69 3 lb. bag

Navel Oranges, California,
.14 lb.

Mushrooms, Fancy Buttons,
.59 8 oz. pkg.

Quaker
Instant
Oatmeal
Reg.
10 oz.
.55



Downyflake Waffles
12 oz.
.45



FM Strawberry
Preserves
2 lbs.
1.19



FM Longhorn Colby
Cheese Half Moon Horn
Random weight
1.39 lb.



Totino's Classic Pizza, 21 oz.
1.75



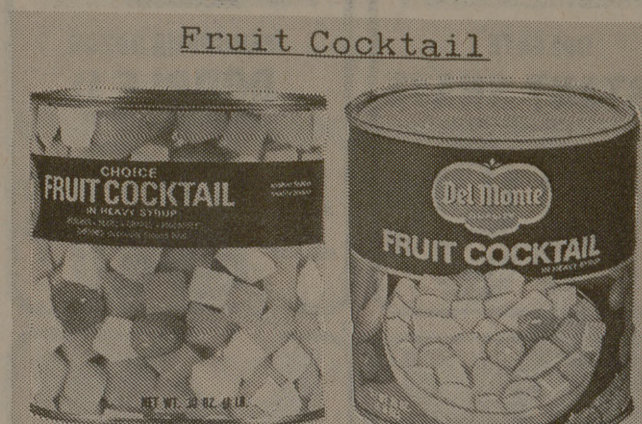
FM Brand
9 oz.
.45

Birds Eye
Cool Whip
9 oz.
.59



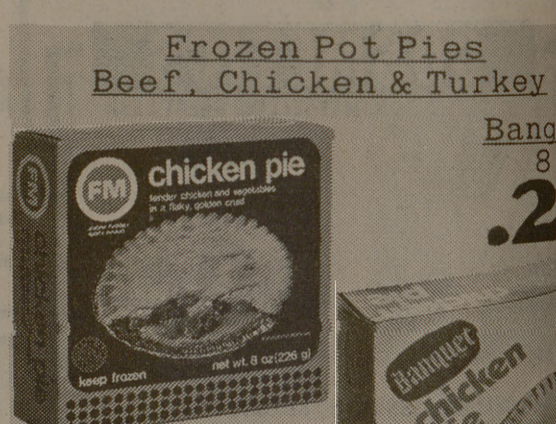
FM Brand
22 oz.
.69

Duncan Hines
23 oz.
.97



FM Brand
16 oz.
.35

Del Monte
17 oz.
.41



FM Brand
8 oz.
.25

FedMart*

*the spot for smart shoppers

Open Sundays, 11:00 to 5:00

Balsam Hair Conditioner

FM Brand
16 oz.
.85

Revlon
Flex
Extra
Body,
16 oz.
1.49

Gillette Foamy Shave Cream

Regular,
menthol,
lemon/lime,
11 oz.
.89

Fluoride Toothpaste
Reg. or mint,
Colgate 7 oz. 15¢ off label

.89

FM Brand 7 oz.
.59

FedMart*
the spot for smart shoppers

College Station: 701 University Drive East (at Tarrow St.)

Monday through Friday
9:30 a.m. to 9:00 p.m.
Saturday 9:30 a.m. to 6:00 p.m.
Sunday 11:00 a.m. to 5:00 p.m.

Prices subject to change Monday, January 31, 1977