

Bulletin board

WEDNESDAY

ENP-TAEX State Conference, Rudder 6th Floor, 8 a.m.
Secretarial & Clerical Workshop, Rudder 302, 8:30 a.m.
Affirmative Action Accountability, Rudder 410, 8:30 a.m.
32nd Instrumentation Symposium, Rudder Theater, 9 a.m.
University Traffic Panel, Rudder 404, 3:15 p.m.
New Student Orientation, Rudder 701, 6 p.m.
Omega Phi Alpha, Rudder 501, 8:30 p.m.
Chi Alpha, MSC 139, 6:15 p.m.

THURSDAY

Ag Ed Vocational-Administration Committee, Rudder 607, 8 a.m.
AIC Planning Session, Rudder 501, 8 a.m.
Affirmative Action Accountability, Rudder 410, 8:30 a.m.
32nd Instrumentation Symposium, Rudder Theater, 8:45 a.m.
Circle K, MSC 140, 7 p.m.
Class of '78, Rudder 301, 7:30 p.m.
Cepheid Variable, "A Clockwork Orange," Rudder Auditorium, 8 p.m.
Instrumentation Symposium, Banquet, MSC 201, 7:30 p.m.
Free University, Instructor's Meeting, MSC 145, 7:30 p.m.

Bryan-College Station Chamber Orchestra String Auditions, MSC Singing Cadets Practice Room, 8 p.m.

FRIDAY

AIC Planning, Rudder 501, 8 a.m.
University Library, Demonstration, Rudder 607, 9 a.m.
32nd Instrumentation Symposium, Rudder Theater, 10:15 a.m.
Texas Chapter American Foundrymen Association, Banquet, Rudder 201, 7 p.m.
Classical Archeology, Rudder 501, 7:30 p.m.
Aggie Cinema, "Godfather II," Rudder Auditorium, 8 p.m.

SATURDAY

Gromets, MSC 137, 12 noon.

SUNDAY

Association of Former Students, Long Range Planning Committee Luncheon, MSC 206, 12 noon.
Aggie Cinema, "Fiddler on the Roof," Rudder Theater, 2 p.m.
Executive Development Program, Rudder 501, 2:30 p.m.
Young Life College Fellowship, Old College Station City Hall, 5:30 p.m.

TUESDAY

Free University, Registration, Rudder Second Floor, 9 a.m. until 9 p.m.

Carla Dee Beauty Salon

OFFERING 10% DISCOUNT WITH I.D. CARD ON HAIR CUT AND BLOW DRY - QUICK SERVICE ONLY.
UNIPERMS, AFROS AND ALL LATEST STYLES.
SUNNYLAND SHOPPING CENTER BETWEEN CAVITT AND TEXAS AVENUE (HWY. 6)
1700 TEXAS AVENUE BRYAN, TEXAS 822-2623

M.S.C. CAMERA COMMITTEE

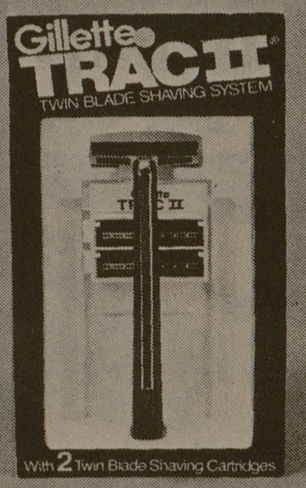
FIRST MEETING MONDAY, JAN. 24, 1977 ROOM 301, RUDDER TOWER 7:30 P.M. BE THERE!

Tupinamba

Eddie Dominguez '66
Joe Arciniega '74
Greg Price

POP those who demand the Real thing!
If you want the real thing, not frozen or canned... We call it Mexican Food Supreme.
Dallas location: 1071 Northwest Hwy 822-8570

Gillette Trac II Razor
With 2 twin blades.
1.99
Gillette Trac II Razor Blades, pkg. of 5
.95



Ultra Ban Super Antiperspirant
Unscented, 8 oz., 20% off label
.69



Cling Free sheets
NEW! 64 SHEET SIZE
FABRIC SOFTENER FOR THE DRYER
54 SHEETS (14 1/2" x 21 1/2")
Cling Free Sheets, pkg. of 54
1.99

Pledge Lemon Furniture Polish
12 oz.
1.25



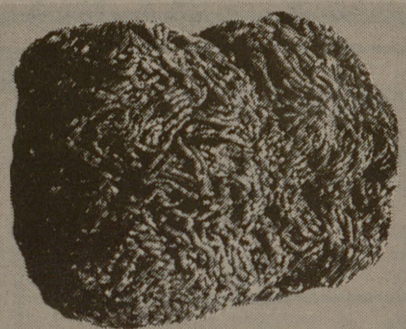
FedMart*

*the spot for smart shoppers

Open Sundays, 11:00 to 5:00

Extra Lean Ground Beef
.89 lb.

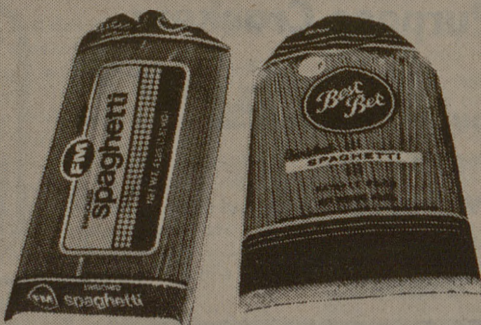
Regular Ground Beef
.55 lb.



Spaghetti

FM Brand 4 lb. **1.29**

Best Bet 4 lb. **1.49**



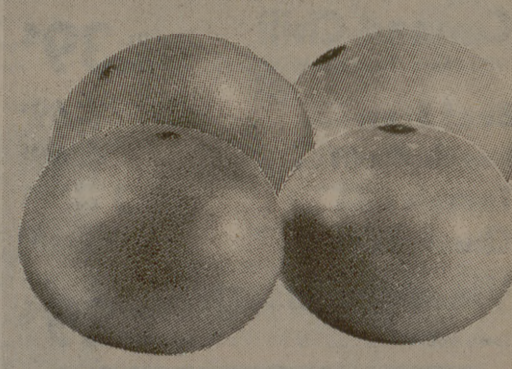
Spaghetti Sauce

FM Brand 32 oz. **.97**

Ragu 32 oz. **1.19**



Grapefruit
Texas ruby red,
.65 5 lb. bag



T-Bone Steak
Beef Loin, USDA Good,
1.75 lb.



All Meat or All Beef Franks

Oscar Mayer 1 lb. **.89**

FM Brand 1 lb. **.72**



Crinkle Cut Frozen Potatoes

FM Brand 2 lbs. **.69**

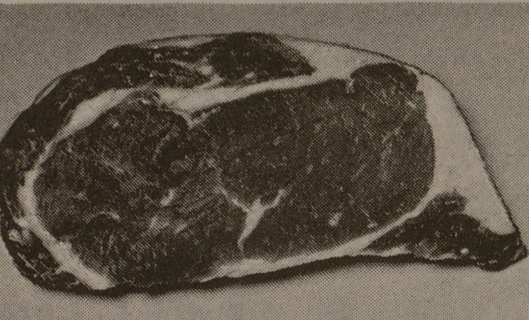
Ore-Ida 2 lbs. **.73**



Oranges
Texas,
.49 5 lb. bag



Beef Rib Eye Steak,
USDA Good,
2.29 lb.



Grape Jelly

FM Brand 32 oz. **.87**

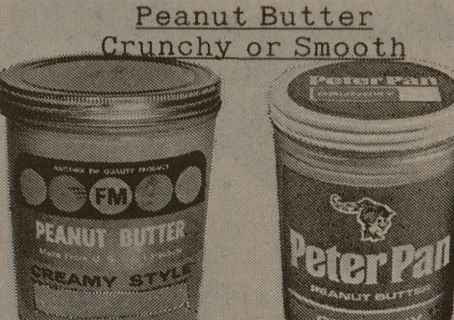
Welch's 32 oz. **.98**



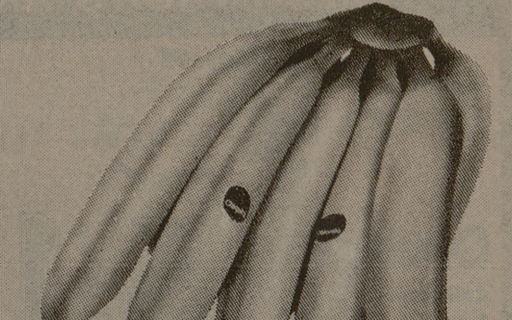
Peanut Butter
Crunchy or Smooth

FM Brand 18 oz. **.75**

Peter Pan 18 oz. **.95**



Bananas
Central American,
.14 lb.



Buddig Smoked Sliced Meat
Assorted, 3 oz.
.37



Processed Sliced American Cheese

Borden 12 oz. **.99**

FM Brand 12 oz. **.95**



Tea Bags

FM Brand Pkg. of 48 **.69**

Lipton Pkg. of 48 **.79**



Wishbone Italian Dressing
16 oz.
.85



Rath All Meat Bologna
1 lb.
.69



Pepperidge Farms Apple Tart, 11 oz. **.72**

FM Buns, hamburger or hot dog, pkg. of 8 **.35**

FM Potato Chips, 9 oz. **.59**

Claussen Pickles, 1 lb. **.95 qt.**

Nestle Hot Cocoa Mix
12 Pk. **.87**



FedMart*

*the spot for smart shoppers

College Station: 701 University Drive East (at Tarrow St.)

Mon.-Fri. 9:30 a.m. to 9:00 p.m.
Saturday 9:30 a.m. to 6:00 p.m.
Sunday 11:00 a.m. to 5:00 p.m.

Prices subject to change Monday, January 24, 1977.