

Lunkers 'N Lies

By JIMMY GUILLOT



In addition to the abundant freshwater fishing opportunities in the state, Texas has more than 600 miles of tidewater that provides both sport and commercial fishing. We are fortunate to have such a large coastline, because there are many nations in the world that don't have even 10 miles bordering the sea.

Saltwater fishermen spend a lot of money annually for fishing equipment, bait, and other services, and the total grows each year. Commercial fishermen depend on the resources of the Gulf of Mexico for their livelihood. For these reasons, it is important to keep the sea fit to support marine life.

We found out in the past few years that the oceans could not continuously absorb man's wastes and still produce food for the world. The "infinite" stocks of marine life can be decimated, although no one knows just how much effect pollution has already had.

In Texas, steps have been taken to study the effects of pollution, and how to protect fish from it. Texas Parks and Wildlife Department (TP&W) recently approved a plan to make sure there are enough fish in Texas bays to meet the demand for the next decade.

The first step in this plan is probably the most difficult—determining what kind and how many fish are now in the bays, and how many are being removed by fishermen. The program is split into finfish management and shellfish management, and

after two years of survey work, biologists have some answers as to what is being caught.

Seven major bays have been surveyed, and it was found that sport fishermen catch most of the seatrout, gafftopsail catfish and croaker. Commercial fishermen catch most of the redfish black and drum.

One startling fact was revealed by this program concerning unutilized fish stocks. It is estimated that between 500 million and two billion pounds of fish and shellfish are discarded annually by shrimp boats. These fish are caught in the shrimp trawls, and shrimpers have no use for them. They are, however, a tremendous potential protein source that could be utilized.

The shrimp industry in Texas is worth about \$88 million, and its well-being is a prime concern of Parks and Wildlife programs. Field workers continuously monitor the state's shrimp stocks, and recommend dates for closing the seasons.

There are many other areas of concern in keeping watch over the coastal waters. The rivers and streams which empty into bays must be monitored for pollution. The rivers are very important to marine life, because they carry nutrients into the sea from inland areas. As more reservoirs are built on rivers, less water and nutrients flow to the marine life. Only time will tell whether this will have a significant effect on saltwater species.

No Nationals for volleyball team

The volleyball season ended on a disappointing note for members of Texas A&M's women's intercollegiate team when they finished fourth in the Regional Tournament held a couple of weekends ago in Nacogdoches.

Despite their fourth place finish the Aggies had high hopes, based on a fine overall seasonal performance, of being selected as a wild card team to compete in Nationals which will be held December 9, 10, and 11 in Austin.

Early this week, however, the Ags found out they had not been chosen, thus ending an impressive, though somewhat disappointing season.

Lamar and the University of Texas at Arlington surprisingly finished first and second, respectively, in the Regional Tournament, thus earning the right to compete at Nationals. Ironically, both teams have consistently been beaten by A&M all season long.

The University of Houston finished third at Regionals, but gained a berth in the National Tournament as a wild card team.

Of the three teams advancing to Nationals from A&M's region, only nationally ranked U. of H. has a winning record against the Ags this season. Of the seven matches played against each other, U. of H. won four and A&M won three.

The Aggies finished the year with an impressive 42-9-2 record, by far the best season ever in A&M's history. Their record seems even more outstanding when considering that

Texas, along with California, are the two strongest states in volleyball in the entire nation.

Members of A&M's 1976 volleyball team include Rita Kuntz, Joann Nichols, Ellen Morcom, Vicki Marshall, Tracie Chandler, Jan Bunge, Brenda Crim, Ellen Schoennagal, Laura Cobb, Diane Douglas, Mardi Aleder and Judy Bigon.

Basketball poll

Associated Press

The Top Twenty teams in The Associated Press college basketball poll, with first-place votes in parentheses and this season's records. Points based on 20-18-16-14-12-10-9-8 etc.:

- | | |
|----------------------|-----|
| 1. Michigan (38) | 1-0 |
| 2. Marquette (3) | 0-0 |
| 3. UCLA | 2-0 |
| 4. Indiana (2) | 1-0 |
| 5. Kentucky (1) | 1-0 |
| 6. Nev.-L. Vegas | 1-0 |
| 7. Louisville (2) | 0-0 |
| 8. Notre Dame | 1-0 |
| 9. N. Carolina | 1-1 |
| 10. S. Francisco (1) | 2-0 |
| 11. Arizona | 1-0 |
| 12. Cincinnati (1) | 0-0 |
| 13. Alabama | 1-0 |
| 14. Wake Forest | 1-0 |
| 15. Tennessee | 1-0 |
| 16. Maryland | 0-1 |
| 17. S. Illinois | 1-0 |
| 18. DePaul | 0-1 |
| 19. Rutgers | 0-0 |
| 20. NC-Charlotte | 1-0 |

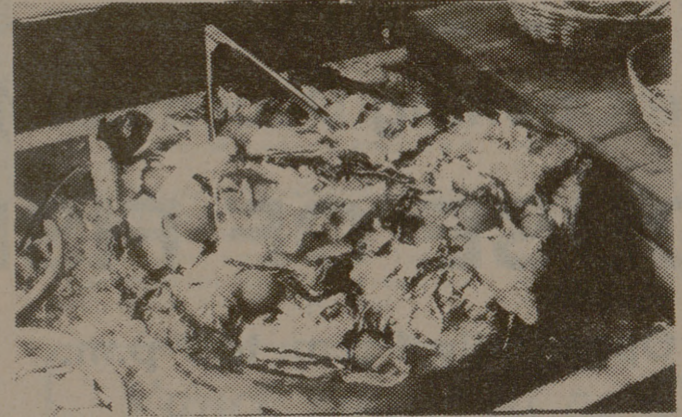


Lou's Worried!
He needs Used Books —
He's buying Books NOW

Loupot's Bookstore

North Gate — Across from the Post Office

TRY OUR SALAD FOR ONLY \$9.95!



Served with a 20 oz. sirloin steak, just right for two, baked potato or corn on the cob and a freshly baked loaf of bread! (And for your enjoyment try one of our new wines)

3C BAR-B-Q GRAVES

810 South Main
823-8441
Open Everyday
But Monday 11-9



INTRAMURAL BASKETBALL

ENTRIES CLOSE
TUESDAY, DEC. 7
5:00 P.M.

DeWare Fieldhouse

DIVISIONS OF COMPETITION: Corps, Fish, Men's Dorm, Women's Dorm, Men's Independent, Women's Independent, and Co-Rec.

CLASSES OF COMPETITION:

- Class A — High skilled. All-University championship
- Class B — moderately skilled. Class championship
- Class C — "play for fun," Class championship

CO-REC TEAMS: Consist of 3 guys and 2 girls.

RULES: NCAA Rules are in effect with special TAMU intramural exceptions. These special rules can be picked up in the IM office.

Play will begin January 18th, 1977.

There will be a mandatory team manager's meeting Thursday, Dec. 9, at 5:15 p.m. in room 267, GR White Coliseum. Co-Rec team managers will meet at 6:15 in the same room. Schedules will be distributed to the representative present. All teams not represented who have not made prior arrangement will be dropped.

Anyone interested in officiating should contact John Meyer in the Intramural Office.

ATTENTION AGGIES

Apply to be one of thirty TAMU delegates to the 22nd Student Conference on National Affairs — SCONA 22 — to be held February 16-19, 1977. This year's topic is "The Expression of Individuality in American Society."

Sign up for interviews at the MSC director's office, Rm. 221 MSC through Friday December 3, 1976. For more information call 845-1914.

SCONA
22



All eyes are on you in evening wear
by Act I and Flomar.

Prices from \$34.00 to \$39.99

MANOR EAST MALL

MON.-FRI. 10:00-9:00
SAT. 10:00-7:00