



Extra Lean Ground Beef

.99 lb.

Porterhouse Steak,
Beef Loin, USDA Choice,

1.67 lb.

Top Sirloin Steak, Beef Loin,
USDA Choice,

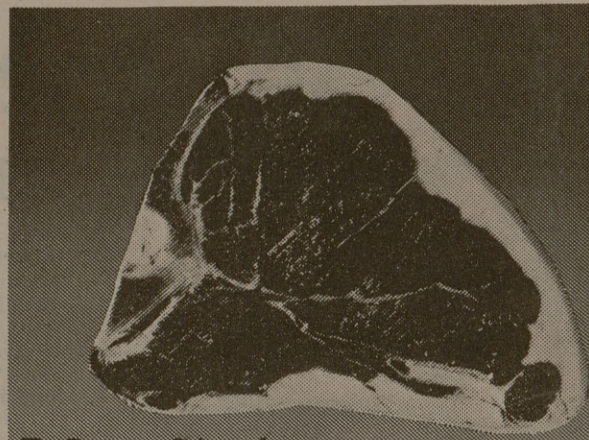
1.79 lb.

Beef Rib Eye Steak,
USDA Choice,

2.49 lb.

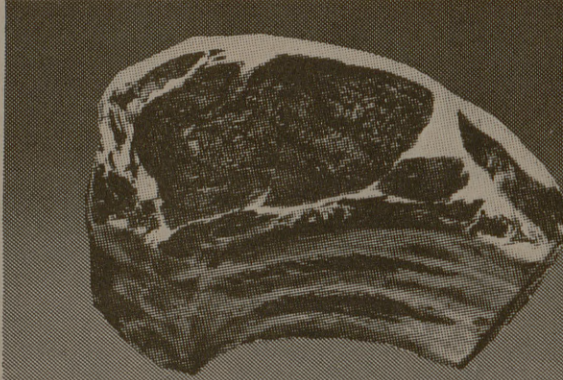
Rump Roast, Beef Round,
USDA Choice,

1.04 lb.



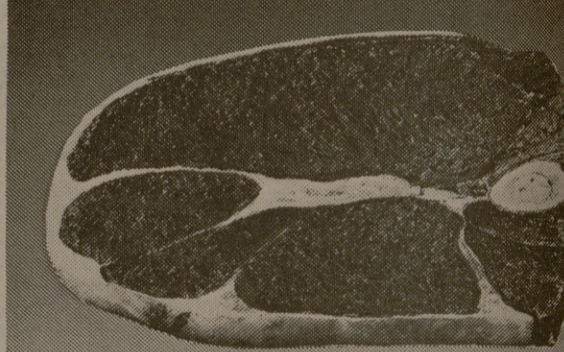
T-Bone Steak,
USDA Choice, Beef Loin

1.57 lb.



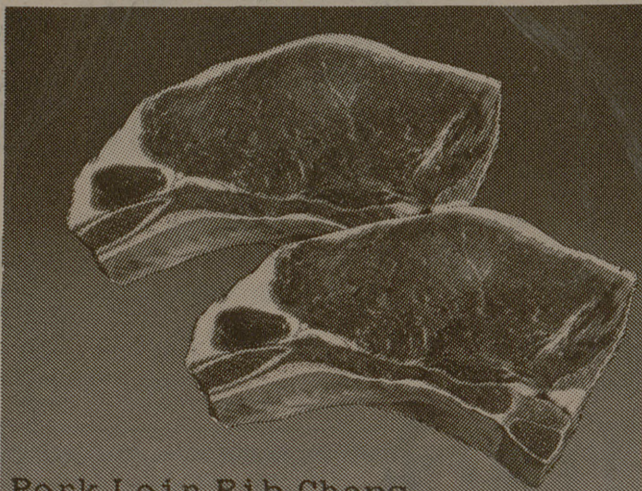
Beef Rib Roast
USDA Choice, small end,

1.39 lb.



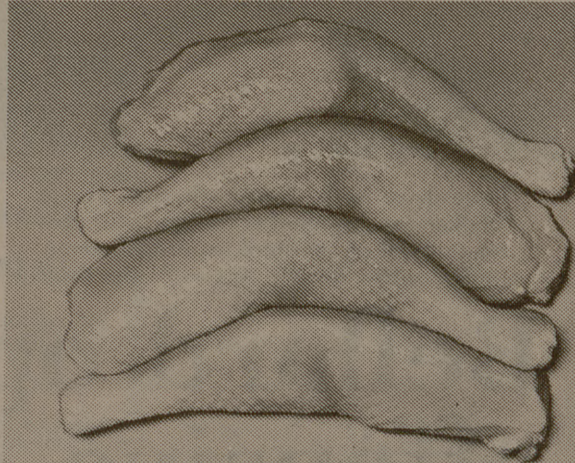
Beef Round Steak
USDA Choice,

1.09 lb.



Pork Loin Rib Chops

1.57 lb.



Fryer Legs

.79 lb.

Beef for Stew,

1.17 lb.

Beef Plate Short Ribs,

.49 lb.

Pork Loin Roast,
Sirloin Cut,

1.19 lb.

Countrystyle Ribs, Pork Loin,

1.29 lb.

FedMart*

*the spot for smart shoppers

Open Sundays 11 to 5.

American Process Cheese Slices

FM Brand
12 oz.

.95



Borden
12 oz.

1.15



Tomatoes Large,
vine-ripened, lb.

.29

Bartlett Pears, Sweet, Juicy,

.29 lb.

Golden Delicious Apples
Fresh, crisp.

.29 lb.

Thompson Seedless Grapes,
Sweet,

.39 lb.

Peaches, Washington

.39 lb.

Franks, All Meat/All Beef



Roth
1 lb.
.79

FM Brand
1 lb.

.73

Grape Jelly



FM Brand
32 oz.

.89



Welch's
32 oz.

.93

Mayonnaise



FM Brand
32 oz.

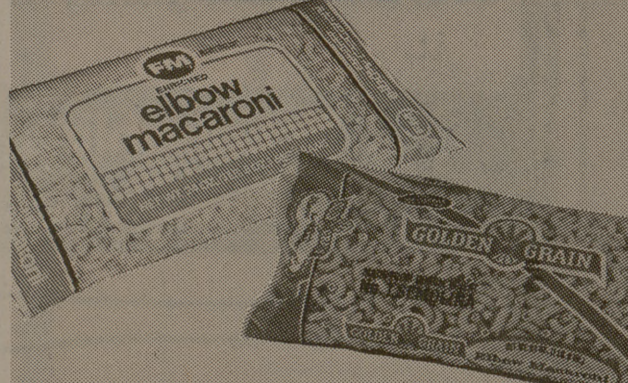
.85



Kraft
32 oz.

.99

Elbow Macaroni



FM Brand
24 oz.

.59

Golden Grain
24 oz.

.65

Spaghetti Sauce



FM Brand
32 oz.

.99



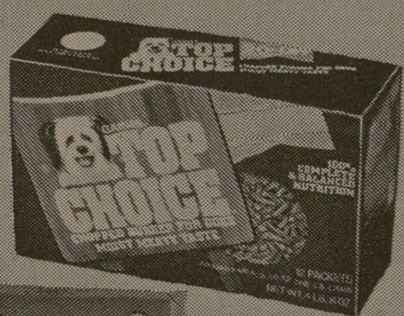
Ragu
32 oz.

1.19

Burgers for Dogs

FM Brand
72 oz.

1.89



Top
Choice
72 oz.

2.35

Green Liquid Dish
Detergent



FM Brand
32 oz.

.79

Palmolive
32 oz.
20¢ off
label

.97



FM Dishwasher
Crystals 50 oz.

1.09

Cascade
Crystals 50 oz.

1.39

FedMart*

*the spot for smart shoppers

College Station: 701 University
Drive East (at Tarrow St.)

MON.-FRI. 9:30-9:00

SAT. 9:30-6:00

SUN. 11:00-5:00

Prices subject to change Monday, September 20, 1978