

Voter registration drive is result of earlier campaign

AUSTIN — Sec. of State Mark White has announced that his office is conducting a massive, statewide voter registration drive for this fall's Presidential election.

"The new Texas registration law makes it easier than ever before to vote in Texas, and we are trying to make sure every citizen is aware of that fact," White said.

Under the new registration law, Texans need only fill out a registration postcard and mail it, White said, adding that the registration deadline for the Nov. 2 election is Oct. 1.

Registration applications are available through county tax assessors or by calling a toll-free number in White's Austin office. The number, open during business hours, is 1-800-292-9602.

Kissinger meets with key delegates

Ocean mining deadlock nears 11th hour

By SERGE SCHMEMMANN

Associated Press
UNITED NATIONS, N.Y. — Secretary of State Henry A. Kissinger is meeting key negotiators at the Law of the Sea Conference in an 11th-hour attempt to break a deadlock over mining of the ocean floor. Kissinger scheduled a series of

meetings today and tomorrow with delegates from about two dozen countries who have taken a leading role in the United Nations conference that started in 1973 and now is near an impasse.

The secretary arrived in New York last night. His first appointment today was with Hamilton S.

Amerasinghe of Sri Lanka, presiding officer at the 150-nation conference.

The effort to write a global treaty covering the use and exploitation of the oceans has come apart over the question of whether American mining companies should be guaranteed access to the potato-sized nodules of nickel, cobalt and manganese scat-

tered over the floor of the eastern Pacific.

Several American firms are years ahead of other countries in seabed mining technology and are pressing hard to start mining with or without a treaty.

But the minerals are beyond the national jurisdiction of the United

States or any other nation. Access to them has become a major point of contention between the industrialized powers and developing countries seeking a new economic order.

At the negotiating session in New York last spring, most delegates appeared to accept a compromise sponsored by the United States of proposed sharing the minerals 50-50 between private firms and an international seabed authority that would sponsor mining operations on behalf of the developing countries.

But at the current session of the conference, the group of more than 110 developing countries demands that the authority have sole power to grant access to the seabeds. The United States declared firm it would settle for no less than guaranteed access for private firms, and talks deadlocked.

Since this session of the conference began Aug. 2, the block of developing countries has been dominated by such hardliners as Algeria, Tunisia and Egypt, who have adamantly opposed any concession. Many moderates among them termed the "silent majority" of Western negotiators — tacitly recognized there will be no treaty unless the Americans are given greater access.

Their major concern appears to be that under the parallel mining system proposed by the United States they would be left with the richest rich tracts of nodules but without the financing, equipment and know-how to get at them. There was widespread speculation among delegates that Kissinger would offer to supply this in exchange for the arrangement the United States wants.

U.S. agency lets folks name mountains

Associated Press
RESTON, Va. — May be you can't move a mountain, but did you know you can name one? You can do it by making a proper application to a federal agency here.

At the Board of Geographic Names, about the only name strictly out of bounds are those that are obscene, and you cannot name a mountain, creek or other geographic feature for anyone who's still alive.

Lately, the board says it has received an unusually large number of requests to put names on the map. If you'd like to give a name to an unnamed geographic feature, you must tell the board where it is, what it's like, the reason it needs a name, what or whom you'd like to name it for, and exactly why.

It helps if the person was in some way associated with the geographic feature. Ernest Berringer, the board's staff chief, says you'd be well-advised to check the neighbors before writing.

The board won't accept any proposed name unless the people who live in the area agree it's acceptable and appropriate.

Miss Texas Rodeo pageant starts

Associated Press
STEPHENVILLE, Tex. — Local winners begin competition in three divisions today in the five-day Miss Rodeo Texas pageant in conjunction with the Erath County championship rodeo.

The winner of the contest will go to the Miss Rodeo America contest in Oklahoma next December. Contestants for the Miss Rodeo Texas crown must be local titleholders sponsored by a chamber of commerce, city, riding club or rodeo association.

Trophies will be awarded to winners in horsemanship, personality and western attire divisions.

First lady printer

The first female licensed printer in America was Mrs. Dinah Nuthall, who inherited her husband's business in 1696.

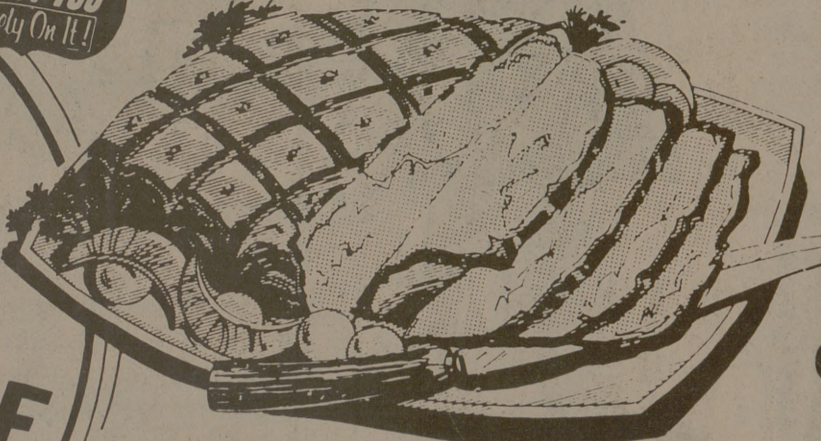
Skaggs-Albertsons' Money Savers

WE CARE ABOUT YOU
Rely On It!

THE ORIGINAL ONE-STOP FOOD*DRUG CENTER!

SHOP & SAVE

BONELESS HAMS



JANET LEE FULLY COOKED

188

WHOLE OR HALF LB.

JANET LEE MEAT WIENERS

12 OZ. PKG. **58¢**

SLOVACHEK, BEEF OR PORK, SMOKED SAUSAGE LB. **1.59**

LEAN MEATY FRESH PORK

SPARE RIBS LB. **1.38**

NOT LESS THAN 70% LEAN

GROUND BEEF 3 LB. PKG. OR MORE **68¢**

USDA CHOICE BEEF CENTER CUT

CHUCK STEAK ... LB. **78¢**

GLOVER'S OR JANET LEE SLICED BOLOGNA 12 OZ. PKG. **88¢**

KRAFT AMERICAN SLICED

CHEESE 12 OZ. PKG. **1.28**

LOUISIANA FRESH

OYSTERS 10 OZ. JAR **1.18**

DAK IMPORTED

SLICED HAM 4 OZ. PKG. **88¢**

SHASTA REGULAR OR DIET

CANNED POP

12 OZ. TIN

8 TINS FOR **\$1**

JANET LEE 8 CT. PKG.

BUNS

HAMBURGER OR HOT DOG

25¢

ALBERTSON'S

POTATO CHIPS

TWIN PACK 8 OZ. PKG.

48¢

HEINZ ALL VARIETIES

B.B.Q. SAUCE

16 OZ. BOTTLE

39¢

ECONO WHITE

PAPER PLATES

100 COUNT PKG.

68¢

HEINZ ALL VARIETIES

RELISH

9 3/4 OZ. JAR

3 FOR **\$1**

DELICATESSEN-SNACK BAR

"FAMILY PACK"

- 2 B.B.Q. CHICKENS
- 1 PT. COLE SLAW
- 1 PT. BARBECUE BEANS
- 1/2 DOZ. DINNER ROLLS
- BARBECUED SPARE RIBS

444

HICKORY SMOKED LB. **1.99**

JANET LEE ALL FLAVORS

ICE CREAM

1/2 GAL. SQUARE

88¢

PORK AND BEANS JANET LEE 15 1/2 OZ. TIN **22¢**

NAPKINS ZEE ASSORTED 60 CT. PKG. **19¢**

CHUNK TUNA ALBERTSON'S 6 1/2 OZ. TIN **46¢**

FARM FRESH PRODUCE

PEARS

NORTHWEST BARTLETT'S

JUICY AND RIPE

4 LBS. FOR **\$1**

POTATOES U.S. NO. 1 RUSSETS BAKING SIZE **4** LBS. FOR **\$1**

PRUNE PLUMS ITALIAN VARIETY TOP QUALITY **3** LBS. FOR **\$1**

GOLDEN KERNAL CORN WHOLE EAR **8** EARS FOR **\$1**

EGG PLANT LARGE SIZE EXCELLENT FOR FRYING **29¢**

LEMON OR LIME JUICE SICILIA **2** FOR **99¢**

PRICES EFFECTIVE SEPT. 1, 2, 3, 4. LIMIT RIGHTS

INSTORE BAKERY!

GERMAN CHOCOLATE CAKES

LARGE 8 INCH TWO LAYER EA. **269**

CUP CAKES ASSORTED ICED **6** FOR **39¢**

PECAN PIES LARGE 8 INCH EA. **1.49**

FRENCH BREAD PLAIN OR SEEDED **3** 16 OZ. LOAVES **1.00**

CAKE DONUTS APPLESAUCE **12** FOR **98¢**

FROZEN FOODS

COOKIN' BAGS

BANQUET ALL VARIETIES

5 OZ. PKGS. FOR ONLY **1.00**

WHIPPED TOPPING

JANET LEE **38¢**

9 OZ. PKG.

LEMONADE

FLAVOR PACK PINK OR REG. 6 OZ. TIN **15¢**

FRUIT PIES

BANQUET MINI 8 OZ. PKG. APPLE-PEACH-CHERRY **4** FOR ONLY **1.00**

WE WELCOME U.S. FOOD STAMPS

SKAGGS ALBERTSONS DRUGS & FOODS

WE'RE OPEN 24 HOURS A DAY 7 DAYS A WEEK

UNIVERSITY DRIVE AT COLLEGE AVENUE

COMET POWDERED CLEANSER **14** OZ. TIN **25¢**

COMET POWDERED CLEANSER **21** OZ. TIN **36¢**

Embrey's Jewelry

We Specialize In

- Aggie Rings.
- Diamonds Set — Sizing — Reoxidizing — All types watch/jewelry Repair

Aggie Charge Accounts 9-5:30 846-5818

ATTENTION DECEMBER GRADUATES!

Orders for Graduation Announcements will be taken beginning September 6 thru October 1 at the Student Financial Center Office, Room 217, Memorial Student Center, Monday thru Friday, from 8:00 to 4:00.