

# Rice becomes fifth basketball victim

By TONY GALLUCCI  
Battalion Staff Writer

Off to a sluggish recovery after suf-

fering their first conference defeat, the Aggies outlasted a scrappy bunch of Rice Owls to pick up their fifth conference win, 85-77.

The Ags pulled ahead late in the first half at 40-22, but Rice poured in 10 straight points, six on free throws, to narrow the margin to eight, 40-32 at the half.

Coach Shelby Metcalf put the blame on himself for the narrow win. "I killed our momentum in the first half. I substituted for the sake of substituting instead of need," said Metcalf. "We had 'em 40-22 and were playing good basketball. We lost the momentum and never got it back."

The Ags returned the second half and built the lead back up slowly, but never really pulled away as the Owls managed to continue narrowing the gap. The lead was cut to six, the smallest since A&M took the lead early.

Freshmen Jarvis Williams and Karl Godine added a touch of former Kashmere days, by teaming together and splitting 36 of the Aggies' 85 points. Williams was seven of 11 from the field and four of five from the line in scoring his career high total at A&M. Sonny Parker hit 15 points, Barry Davis connected on seven of ten shots from the field to score 14 points and Ray Roberts was credited with ten points to put all Aggie starters in double figures.

Rice sophomore Frank and Jackson blistered the boards and nets, gaining a career high 33 points and a team season high of 14 rebounds to lead both categories for the Owls. Freshman Elbert Darden scored 27 points, his career high to give Rice its only other player in double figures.

Over the weekend, the Aggies lost their second double overtime thrill-

er in as many trips to Fayetteville, with just as much controversy.

The Razorbacks outlasted the Ags 93-91, scoring on an unmolested drive to the bucket as the buzzer was supposed to sound at the end of the second overtime period. Sonny P took a long jumper with 18 seconds remaining in regulation time to give the Ags the tie after the Hogs had been up by as much as 13 and had never been behind. Barry Davis had recovered the ball on a rebound, hurried downcourt and shot. He missed, but gathered up his own rebound and shot again before time ran out. No one was quite sure when time ran out, though, as the timekeeper had to be relied upon since the Fieldhouse clock wasn't working.

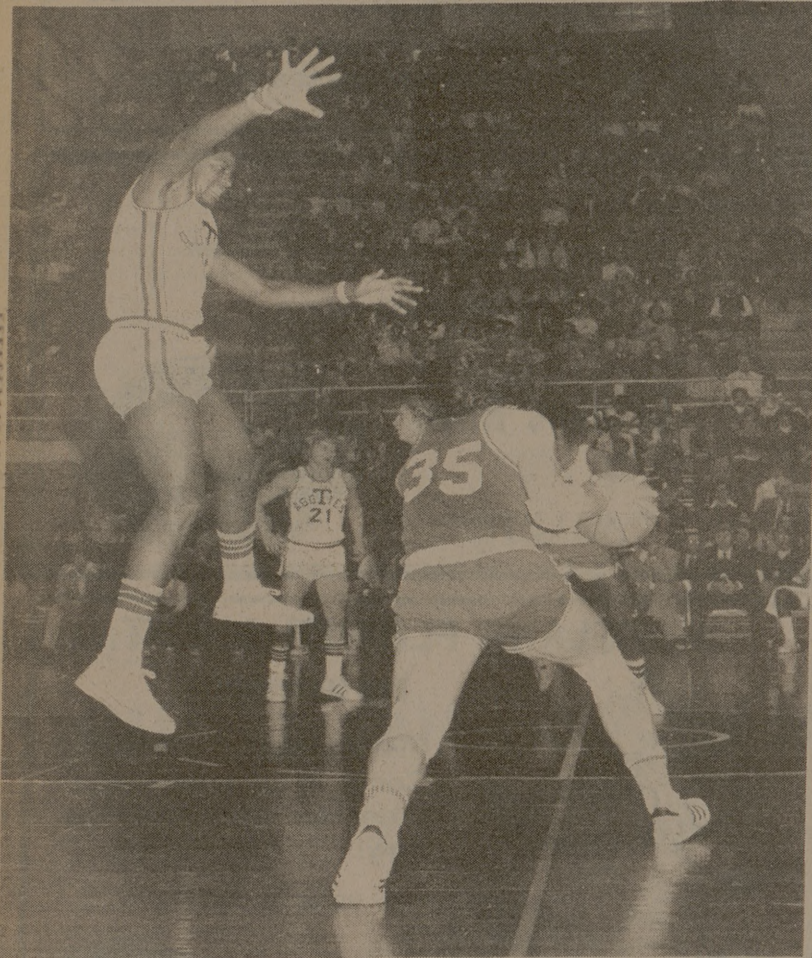
Metcalf thought it took longer than five seconds (supposedly the time remaining) when Jack Schulte got the tip and tossed long to Sidney

Moncrief, who layed in the winning basket. The tip had come after Wally Swanson wrestled Schulte to the floor after Sonny took a shot and missed with seven seconds remaining.

The loss and the win bring the Aggies' record to 5-1 in conference and 12-4 overall. Tech is tied with the Ags at 6-1 for the conference lead after outlasting SMU in a Lubbock thriller.

SMU remains the only probable contender besides Tech with a 5-3 slate in SWC play. Houston, Arkansas and Baylor are still mathematical contenders with four losses apiece, but the race must really tighten for any of them to really compete.

The Ags travel to Austin to play Texas on Wednesday, and then go to Ft. Worth for a matchup with TCU on Saturday.



Senior post man Barry Davis goes skyward against Rice's Dave Louwerse. Davis had 14 points as the Aggies upped their league mark to 5-1 with a 85-77 win over the Owls last night in G. Rollie White Coliseum. Photo by Jim Hendrickson

## Eagle player leads NFC to Bowl win

Associated Press

NEW ORLEANS — Mike Boryla of the Philadelphia Eagles, a quarterback who wasn't supposed to be within 1,000 miles of the Pro Bowl, hit St. Louis' Mel Gray with an eight-yard touchdown pass with 1:09 left to lift the National Football Conference to a 23-20 victory over the American Conference Monday night.

Boryla was a substitute for a substitute. Minnesota's Fran Tarkenton was picked for the game but had a sore arm and was scratched. Dallas' Roger Staubach, who was chosen to replace Tarkenton, had sore ribs as a result of a Super Bowl pounding and couldn't make it, either.

National Football League officials tried to get New Orleans' Archie Manning, but he reported a sore arm. So did Steve Bartkowski of Atlanta and James Harris of Los Angeles.

They finally settled on Boryla, a sometimes starter in his second year in the league. Boryla's scoring pass to Gray capped a 30-yard drive set up by a razzle-dazzle punt return that saw Detroit's Lem Barney take a lateral and race 50 yards to the AFC 30.

It put the NFC in the lead for the first time and overcame what appeared to be a commanding lead sparked by two long punt returns by Billy Johnson of the Houston Oilers.

**LANDES LTD.**  
SALES: Alumacraft, Grumman, ABS Tejas & Blue Hole  
RENTAL: Special group rates  
**DR. MICKEY LITTLE**  
College Station, Tx.  
(713) 846-7307  
WINTER CANOE SALE IN PROGRESS  
SAVE \$20-\$30 ON A NEW CANOE  
PLUS 2 FREE PADDLES (\$19 VALUE)  
Clip and save

**ALLEN Oldsmobile Cadillac**  
SALES - SERVICE  
"Where satisfaction is standard equipment"  
2401 Texas Ave.  
823-8002

**Embrey's Jewelry**  
We Specialize In Aggie Rings. Diamonds Set — Sizing — Reoxidizing — All types watch/jewelry Repair  
Aggie Charge Accounts  
9-5:30 846-5816

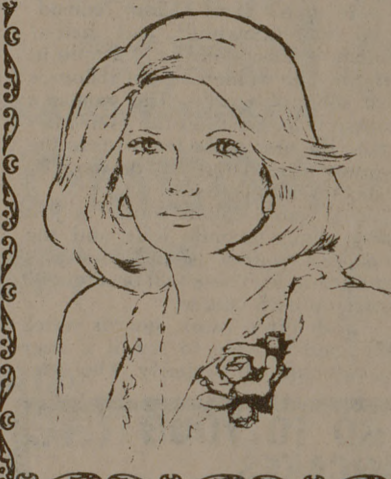
**The Shape of Things**  
The only full service hair shaping emporium in the Northgate area.  
Call or come by: Above Kesami Sandwich Shoppe  
331 University Drive College Station, Texas  
713/846-7614 77840

**THE GREATEST SANDWICH**  
The greatest sandwiches in the Southwest are served from 11:00 a.m. to 1:30 p.m. each day Monday through Friday on floor 11M, Conference Tower. The greatness of these sandwiches is no accident. There are several types of meats and you can select your choice and mix or match any three pieces for your sandwich on the bread of your choice.  
Two of the several types of bread are sour dough and baked fresh daily in our Duncan bakery. Further, these breads are prepared without shortening for the diet conscious guest. For the greatest taste tempting delight just make your sandwich exactly like you want it and pop it into one of the handy micro-wave ovens. This wonderful sandwich and a bowl of soup for only \$1.50 plus tax will place you on cloud 11M.  
We agree this is a bit of a long story, but it is difficult to stop talking about our tasty sandwiches.  
Open Sunday 11:00 A.M. - 1:30 P.M. for regular meal only.  
"QUALITY FIRST"

## Olympic cyclist gives presentation

Keith Kingby, the United States foremost expert on bicycling safety, will give a public presentation tonight in Room 701 of Rudder Tower at 7:30.

Kingby, 61 and an Olympic cyclist in the past, is involved with trying to institute courses on cycling safety in the public schools. He is also director of cycling activities for Schwinn Bicycles.



A corsage designed for the special girl.

Flowers for the Freshman Ball... any occasion. Just stop by or call.

## Petal Pusher

846-6713

Across from A&M in the new Texas 707 Bldg.  
Only two weeks until Valentine's Day. Order

# Special Offer, \$10.00 Value\*: Free HP-21 Applications Book with the purchase of any HP-21. Offer expires March 15, 1976.

See your dealer for details.

Offer void where prohibited by law regulation, or otherwise. Available only with the purchase of a new HP-21 before March 15, 1976.

## The second generation is here.



One of our second generation calculators can save you countless hours and errors en route to your diploma and on the job thereafter. Each offers problem-solving technology you probably won't find on competitive calculators.

## New low price. HP-21 Scientific, \$100.00\*

The HP-21 makes short work of the technical calculations even so-called "non-technical" courses require today. It performs most arithmetic, log and trig calculations automatically. It's also the only calculator at its price that offers full display formatting: you can choose between fixed decimal and scientific notation.

If you need a calculator that does more than simple arithmetic, this is it—especially at its new low price.


## New. HP-22 Business Management, \$165.00\*

The HP-22 takes the starch out of the calculations you face in business courses today, in management tomorrow. You can solve most time-value-of-money problems in seconds. You can breeze through business math calculations (logs, roots, %, etc.). And, most important, you can use the HP-22's statistical functions to build existing data into more reliable forecasts. No other pocket calculator at any price offers you a comparable combination of financial, math and stat capabilities.

## New. HP-25 Scientific Programmable, \$195.00\*

Our HP-25 does everything our HP-21 can do—and much, much more. It's programmable, which means it can solve automatically the countless repetitive problems every science and engineering student faces. With an HP-25, you enter the keystrokes necessary to solve a repetitive problem only once. Thereafter, you just enter the variables and press the Run/Stop key for an almost instant answer displayed to 10 digits. You gain time, precision, flexibility.

All three offer you HP's efficient RPN logic system that cuts keystrokes and scratch pads. All three are easy to use (e.g., the HP-25 requires no prior programming experience). And all three are almost certainly on display at your bookstore.\*\*

**HEWLETT  PACKARD**

Sales and service from 172 offices in 65 countries.  
Dept. 658E, 19310 Pruneridge Avenue, Cupertino, CA 95014

\*Suggested retail price, excluding applicable state and local taxes—Continental U.S., Alaska & Hawaii.  
\*\*If not, call 800-538-7922 (in Calif. 800-662-9862) for the name of a dealer near you. 616/92