

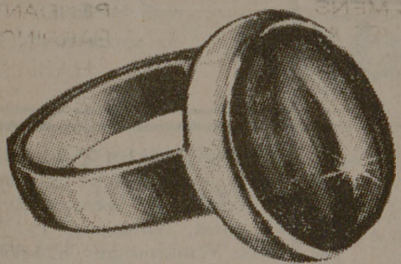
**The Fair**  
MANOR EAST MALL  
has the presence of Christmas

**NEW  
LOW PRICE!  
REACTION  
RINGS**

The Mood Telling Extra Gift for Christmas



The stone is BRIGHT BLUE, she is happy and at ease.



Several Styles to Select From

NOW ONLY  
**2.99**

Women, men...let your fingers do the talking!

Put on a "Reaction" ring and let it interpret your mood from tense grey to serene blue and several changes in between. The same treated crystal is in this ring as in the expensive models.

The stone shifts to any of seven shades according to your mood.

- \* Black...if you're tense
- \* Amber...if you're anxious
- \* Yellow...for unsettled
- \* Turquoise...for relaxed
- \* Bright Blue...at ease
- \* Violet Blue...for serenity
- \* Jade...for "no stress"

It's fun to watch and is quite a conversation piece. Gold or Silver settings in sizes for the kids, women and men!

meet me at  
**the mall**  
Texas Avenue at  
Villa Maria/Bryan



MON. THRU FRI. 10:00-8:30  
SAT. 10:00-6:00

# A&M students making holiday travel plans

By RAY DANIELS  
Battalion Staff Writer

With the final week approaching, students are beginning to make plans for semester break. Many students are planning to travel to destinations ranging from Houston to Europe. Some are homeward bound, others are touring and skiing.

Air travel for the holiday period is heavy, with flights through major airports such as Dallas-Ft. Worth filled since mid-November, said Nelda Gerzik of A&M Travel. Gerzik indicated most travel was for students going home, but some arrangements for travel during the break had been made.

Flights to Mexico and further south have been filled for months, said Diane Stibling of Braley University Travel, but flights to Europe remain open. Students taking trips during break are going to Mexico or going skiing she said, but those going south will find the hotels booked solid and prices at twice the normal rate.

For European touring and skiing, the A&M Travel committee is sponsoring four tours between \$500 and \$600. The trips run from Jan. 5 to Jan. 15 including a ski trip to Avoriaz, France and three tour trips to London, Paris and Italy. Arrangements for these trips are still available in the Student Program Office.

For winter camping to include snow shoeing and cross-country skiing, the Outdoor Recreation committee is sponsoring a trip to San

Juan Wilderness from Dec. 27 to Jan. 4. The sign-up sheet in the Student Programs Office suggests that participants be in good physical condition.

Gerzik explained the money-saving excursion plan for flying. Reservations must be made seven days in advance and return flights taken seven to 30 days after arrival. This plan is limited to particular flights but can save \$30 to \$40 on a round trip ticket. Other economy ideas include no-frills and night

coach flights which save a little less than excursion.

Student travel by car covers the nation with trips ranging from New York and Florida, to Wisconsin and Los Angeles. Many of these students are driving and wish to share rides and expenses, hastening travel time and easing the pocket drain. Names of those with rides available and those wishing rides can be found on the ride board on the landing of the stairwell across from the Main Lounge in the Memorial Student Center.

# FEA gives tips for Christmas

With Christmas around the corner the Federal Energy Administration (FEA) has some helpful hints to make the Holiday season

more enjoyable and energy-conscious.

Some of the ideas released by the FEA Dec. 1 is to buy living trees instead of cut ones. The idea behind this is that after the tree is used indoors it can be planted outside on the windward side of the home blocking cold winds in the winter.

The FEA also advises using the strands of miniature or midget bulbs that use 18 watts per hour per set. It is also advised that twinkling bulbs be purchased because they use half the electricity.

If you wish to decorate with full sized bulbs, use cooler burning ones designed for plastic trees. They draw only six watts per bulb compared to seven and one half watts using standard bulbs.

The best type of extension cords to use according to the FEA are the heavy duty ones. Undersized cords waste electricity and are a safety hazard. The FEA also advises shopping early and chart the routes to save fuel and time.

# Correctional services get new center

A new center for correctional services has been created under a grant from the Criminal Justice Division of the Governor's Office.

Texas State Bar Executive Director, H.C. Pittman, said Monday that the new Texas Center for Correctional Services will consolidate several current Bar projects with some additional projects.

Programs to provide required legal services to inmates and parolees of the Texas Department of Corrections and the Texas Youth Council will be the responsibility of the center.

The center's program will include the current State Junior Bar of Texas Volunteers in Parole project and the State Bar Counsel for Indigent Parolees project.

The State Junior Bar Volunteers in Parole project matches volunteer lawyers with parolees to provide counseling and help in reintegrating the parolee into society.

The Counsel for Indigent Parolees program provides legal representation at parole revocation hearings for parolees who are financially unable to retain legal counseling.

New projects include a program to provide legal counseling and representation to inmates in civil rights matters.

A project is also included to train hearing officers for the Texas Board of Pardons and Paroles in their duties as presiding officers at parole revocation hearings.

**Tupinamba**  
Eddie Dominguez '66  
Joe Arciniega '74  
Greg Price

**Pop those who demand the Real Thing!**

If you want the real thing, not frozen or canned... We call it "Mexican Food Supreme."

Dallas location:  
3071 Northwest Hwy  
352-8570

Get Christmas started with the Arts & Crafts Center Gallery display

With handmade merchandise for sale for those special Christmas Presents.

Located in the MSC Basement.  
Hours 11 a.m. - 10 p.m. Mon.-Fri.  
1-7 p.m. Sat. & Sunday.

We have room for artists interested in displaying their work to sale.

# SHOPPING FOR LITTLE BROTHER?



**THE PERFECT GIFT!**

CUSTOM JERSEYS & T-SHIRTS. YOU CAN ADD THEIR NAME & NUMBER.

SHOP NOW & SEE!

**LOUPOT'S**  
books & britches

North Gate - Across from the Post Office

**SELL YOUR BOOKS EARLY & GET THE BEST DEALS!**

**LOUPOT'S BOOKSTORE**

**LAKEVIEW CLUB**

3 Miles N. on Tabor Road

Saturday Night: Country Music Revue

From 9-1 p.m.

STAMPEDE Every Thursday Nite (ALL BRANDS BEER 35 cents)

Every Tuesday Nite

LADIES FREE All Brands Beer 35c 8-12 MEN \$2.00

Music furnished by the Brazos Sounds

**CHRISTMAS CARTOON SPECIAL**  
from AGGIE CINEMA

**MISTER MAGDO'S CHRISTMAS CARD**

—AND—

**THE NIGHT BEFORE CHRISTMAS**

SATURDAY DECEMBER 13

MERRY CHRISTMAS, MR. SCROOGE.

BAH! HUMBUG!

RUDDER THEATER AT 2:00

FREE ADMISSION

AGGIE CINEMA presents  
A FREE CHRISTMAS SPECIAL

**"THAT'S ENTERTAINMENT"**

CLARK GABLE  
GINGER ROGERS  
CARY GRANT  
DING DING ROSSBY  
GARLAND  
KELLY  
ROONEY  
LIZA MINNELLI  
JAMES STEWART  
O'CONNOR  
PETER LAWFORD  
MICKEY ROONEY  
FRANK SINATRA

DEC. 12 & 13  
RUDDER THEATER

FRI. 8 & 11 SAT. 8  
FREE

ADVANCE TICKETS AT RUDDER BOX OFFICE

**12 GREAT REASONS to go to your International House of Pancakes**

Monday thru Friday  
103 N. College - University Square

- 1 SWISS BURGER  
Swiss Cheese melted over two ground beef patties, served on a grilled onion roll.
- 2 KNOCKWURST SANDWICH  
Grilled Knockwurst and Sauerkraut on an onion roll.
- 3 MIGHTY BURGER  
Double decker burger with cheese, lettuce, and our own special sauce.
- 4 SPANISH BURGER  
Spicy chile salsa covering two ground beef patties, served on a grilled onion roll.
- 5 HAM & SWISS CHEESE  
Sliced ham, naturally aged Swiss Cheese, mayonnaise, and lettuce on rye bread.
- 6 WESTERN SANDWICH  
Sandwich size Denver omelette served on a grilled onion roll.
- 7 PATTY MELT  
Ground beef patty with sauteed onions and melted cheese, served on rye bread and grilled in butter.
- 8 SLICED TURKEY  
Breast of Turkey slices with mayonnaise and lettuce.
- 9 TUNA MELT  
Tuna salad and processed American Cheese grilled in butter.
- 10 OUR OWN HAMBURGER  
Two 100% ground beef patties served open faced on a sesame seed bun.
- 11 VEAL PARMESAN MELT  
Veal steak with melted Swiss Cheese, Italian sauce, onions, served on rye bread.
- 12 BACON, LETTUCE & TOMATO  
Bacon, lettuce, and tomato slices with mayonnaise, served on toast.

**YOUR CHOICE OF TWELVE GREAT SANDWICHES WITH FRENCH FRIES FOR ONLY \$1.29**